

Olympia™

Parks • Arts • Recreation

Experience It!

2022 Parks, Arts & Recreation Plan: Public Input Summary



Overview



- Why we plan
- Supporting Plans
- Accomplishments
- Public Engagement
- What we learned
- Equity tool
- Next Steps
- Questions



Why We're Updating Our Plan...



- To keep current on Olympians' priorities
- To be eligible for WA RCO grants (\$7M since 2016)
- To set the stage for integrating Equity, Inclusion & Belonging
- To incorporate Climate mitigation and adaptation measures



Supporting Plans & Studies



- Comprehensive Plan
- ADA Assessment and Transition Plan
- West Bay Park Recreation, Trail & Restoration Analysis Report
- Kaiser Woods Park Design
- Karen Fraser Woodland Trail Phase III Route Feasibility Analysis
- LBA Woods Trail Improvement Plan
- LERN Recreation Program Review
- Yelm Hwy Park Master Plan (in-progress)
- Regional Aquatic Facility Feasibility Study (in-progress)

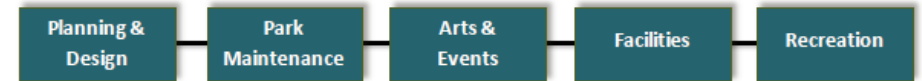
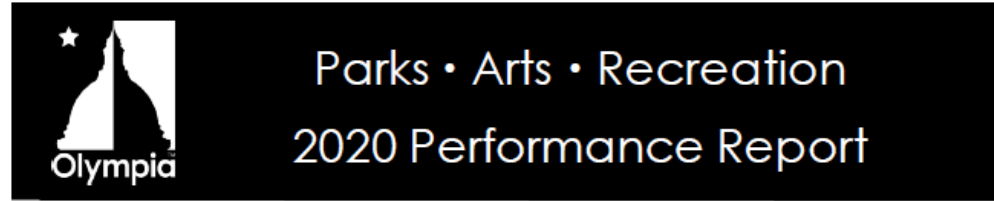


Kaiser Woods Park Public Meeting

Major Accomplishments Since 2016



- Purchased 368 acres of park land
 - LBA Woods, Kaiser Woods, Yelm Hwy Park, and 4 Neighborhood Parks
- Eight new construction projects
- \$5 million invested in Major Maintenance & ADA projects



Olympia Parks, Arts and Recreation (OPARD) uses performance measures to determine and to communicate levels of success in delivering services to the community. This data-based approach measures whether the Department is meeting expectations in many different areas including park acres, park condition, recreation activities, and park asset management.

This report will:

- Highlight **SIGNIFICANT ACCOMPLISHMENTS** achieved throughout the year
- Track and report **33 DATA-BASED PERFORMANCE MEASUREMENTS** broken down by Division.

Major Accomplishments Since 2016



Stewardship/Maintenance:

- Established a dedicated Park Ranger Program
- Expanded the Volunteers in Parks Program
- Implemented Pesticide Free Parks

Recreation:

- *Oly on Ice* at the Isthmus Park
- Partnered with The Bridge Music Project
- Increasing revenue each year (prior to COVID)

Arts:

- Established Olympia Poet Laureate
- Art Crossings project
- Arts, Culture and Heritage (ArCH) Plan



Public Engagement Overview



Summer & Fall 2020

- **Survey #1**
 - Online @ Engage Olympia
 - Paper surveys at 19 Free Lunch Sites (*English, Spanish, Vietnamese*)
 - 252 responses
- **Youth Summer Camps**
 - Mini-survey
 - “Design Your Dream Park” exercise
- **Ideas Tool on Engage Olympia**
 - 7 Questions, 63 Ideas



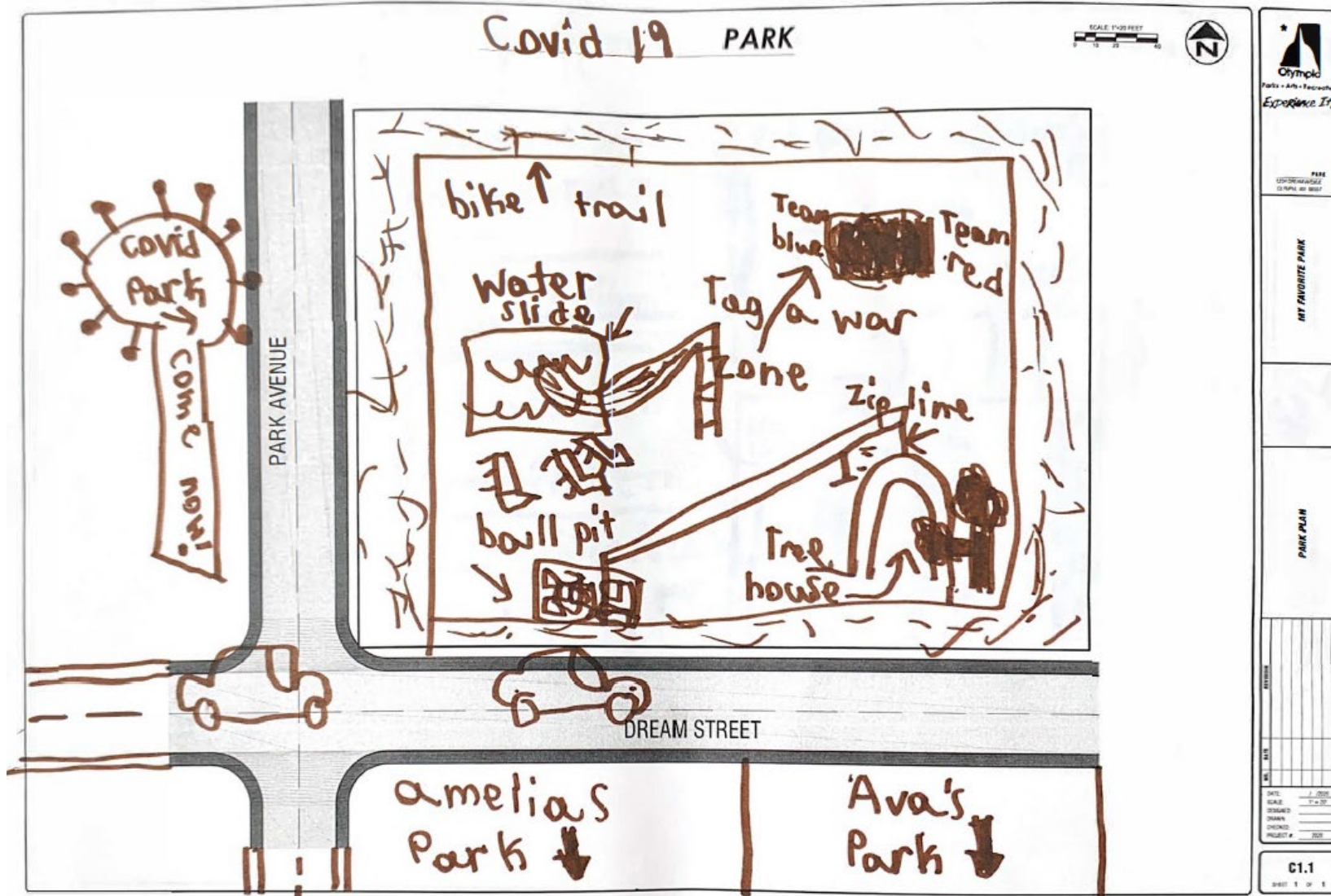
Survey #1 - Top Themes



- Olympians love their access to trails, the waterfront, and that parks are plentiful.
- They'd like to see a public pool, more skate parks, and more restrooms.



Day Camp Dream Parks



Park Elements You Wish We Had in Olympia...



Asphalt pumptrack by Velosolutions



Leavenworth, Bellingham and several cities in Oregon all have the...

Share

22

Covered skate park!



A place for people of all ages to be active and have fun together...

Share

10

Naturescape Playgrounds/Parks



I would love to see more playgrounds like some of my favorites in...

Share

8

Music at the park



Musical installations are a great hands on addition for all ages ...

Share

4

Public Engagement Overview



Winter 2020/21 & Spring 2021

- Survey #2
 - Random Sample Survey
 - Paper surveys mailed to City & Olympia UGA residents
 - 515 responses
- Advisory Committees & Council Review of Public Input
 - PRAC – April 15, 2021
 - Council – April 20, 2021
 - Arts Commission – May 13, 2021
 - Planning Commission – June 7, 2021 ←
 - Coalition of Neighborhood Associations – June 14, 2021



Random Sample Survey - Methodology



- **Method of Administration**
 - By mail and online to randomly selected households throughout the City and UGA
- **Sample Size Goal: 500**
 - 515 surveys completed
 - Margin of error: +/- 4.3% at the 95% level of confidence
- Demographics of survey respondents accurately reflects the actual population of the City
- Consultant's overview of results recorded at PRAC meeting on 4/15/21

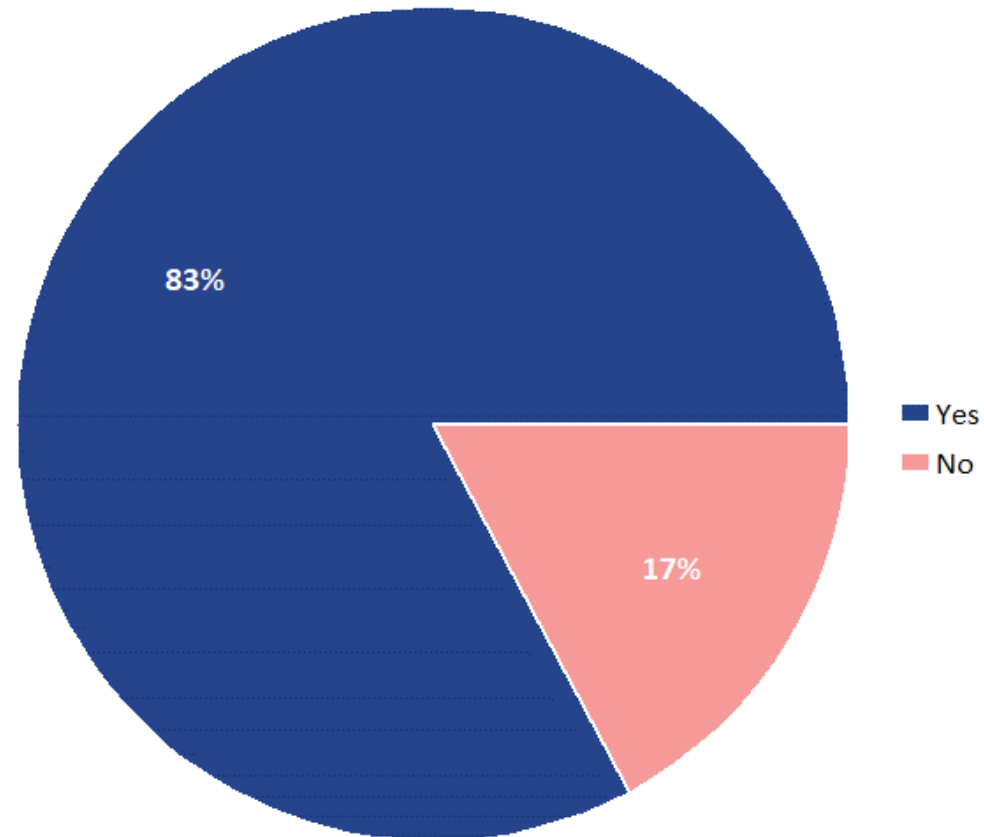


Random Sample Survey Results



Q11. Have you or any member of your household visited any City of Olympia parks during the last 12 months?

by percentage of respondents

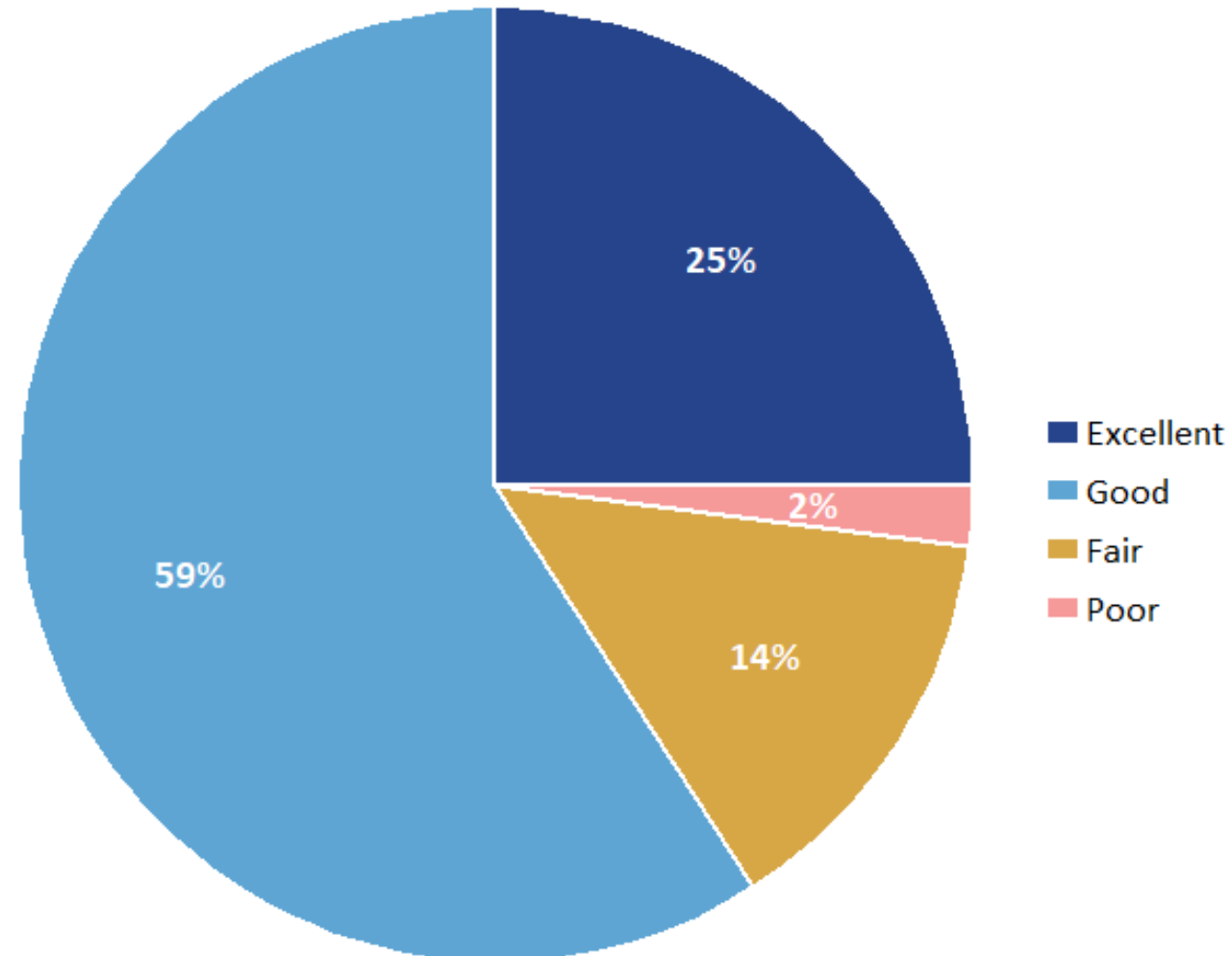


Source: ETC Institute (2021)

53% of Households That Have Visited Parks in the Past 12 Months, Have Visited Them at Least Once a Week

Q11a. Overall, how would you rate the physical condition of all the City of Olympia parks you have visited?

by percentage of households that have visited parks in the past 12 months

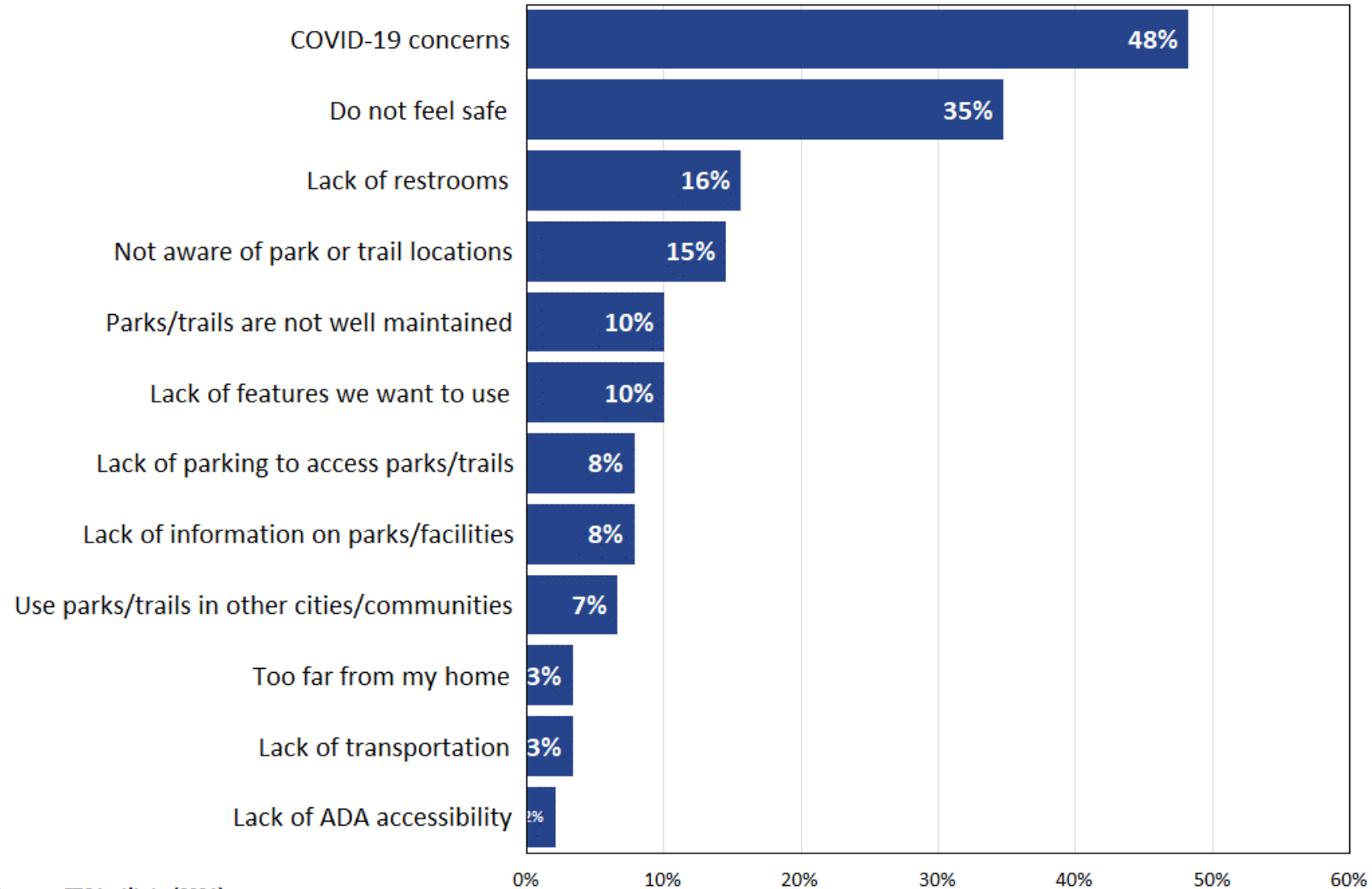


Source: ETC Institute (2021)

84% of Households Rated Parks as “Excellent” or “Good”; Only 2% Rated Parks as “Poor”

Q11d. If your household has not visited any City of Olympia parks during the past 12 months, please check all of the following reasons you have not.

by percentage of households that have not visited parks in the past 12 months

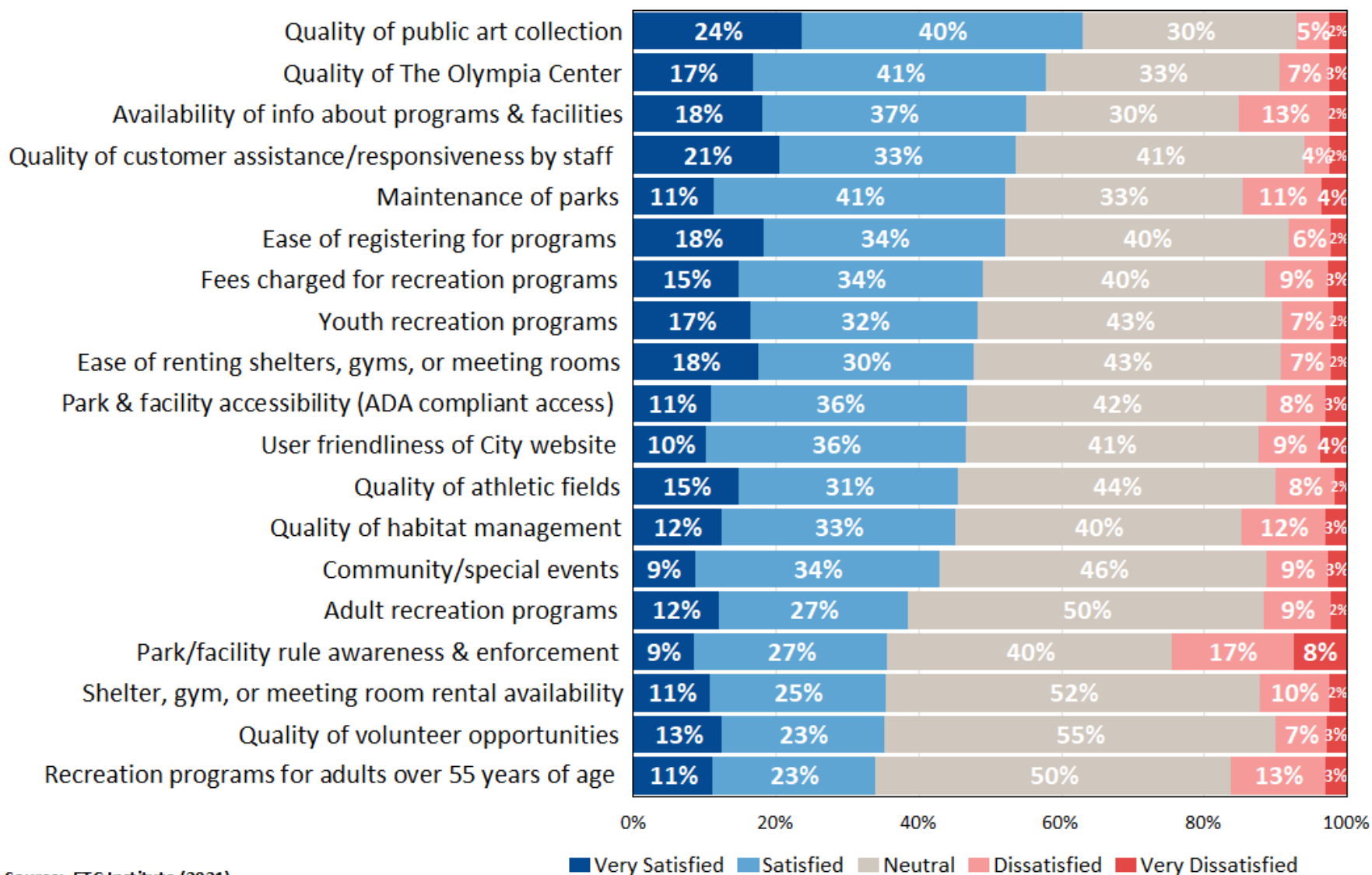


Source: ETC Institute (2021)

Top Barriers to Using Parks Are COVID-19 Concerns and Lack of Feeling of Safety

Q9. Please rate your satisfaction with the following City of Olympia Parks, Arts, and Recreation services.

by percentage of respondents using a 5-point scale, where 5 means "very satisfied" and 1 means "very dissatisfied" (without "don't know")

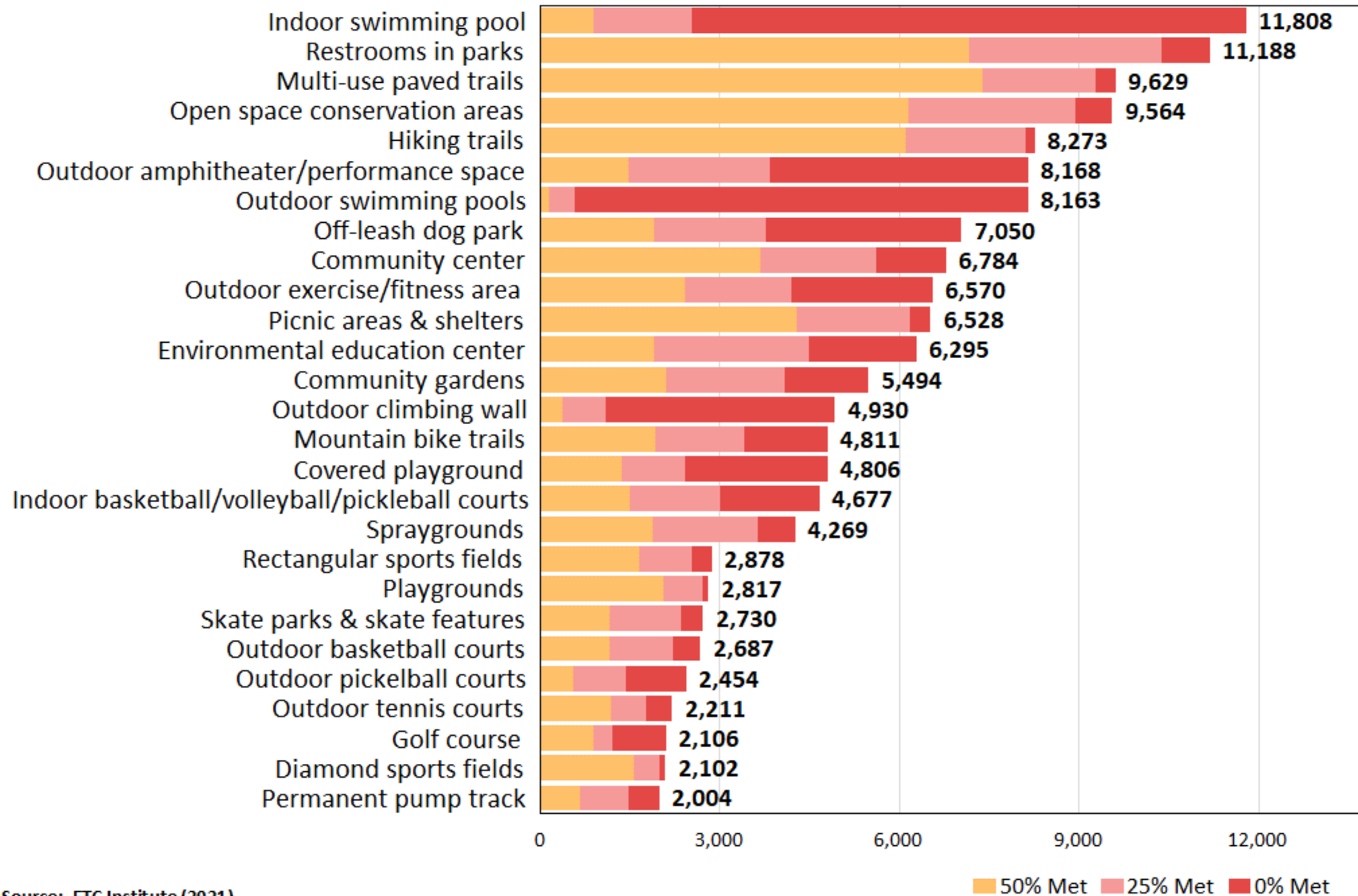


Source: ETC Institute (2021)

For All Services, 25% or Less Are Dissatisfied

Estimated Number of Households Whose Need for Facilities/Amenities Are Being 50% Met or Less

by number of households (based on an estimated 23,707 households in the City of Olympia, Washington)

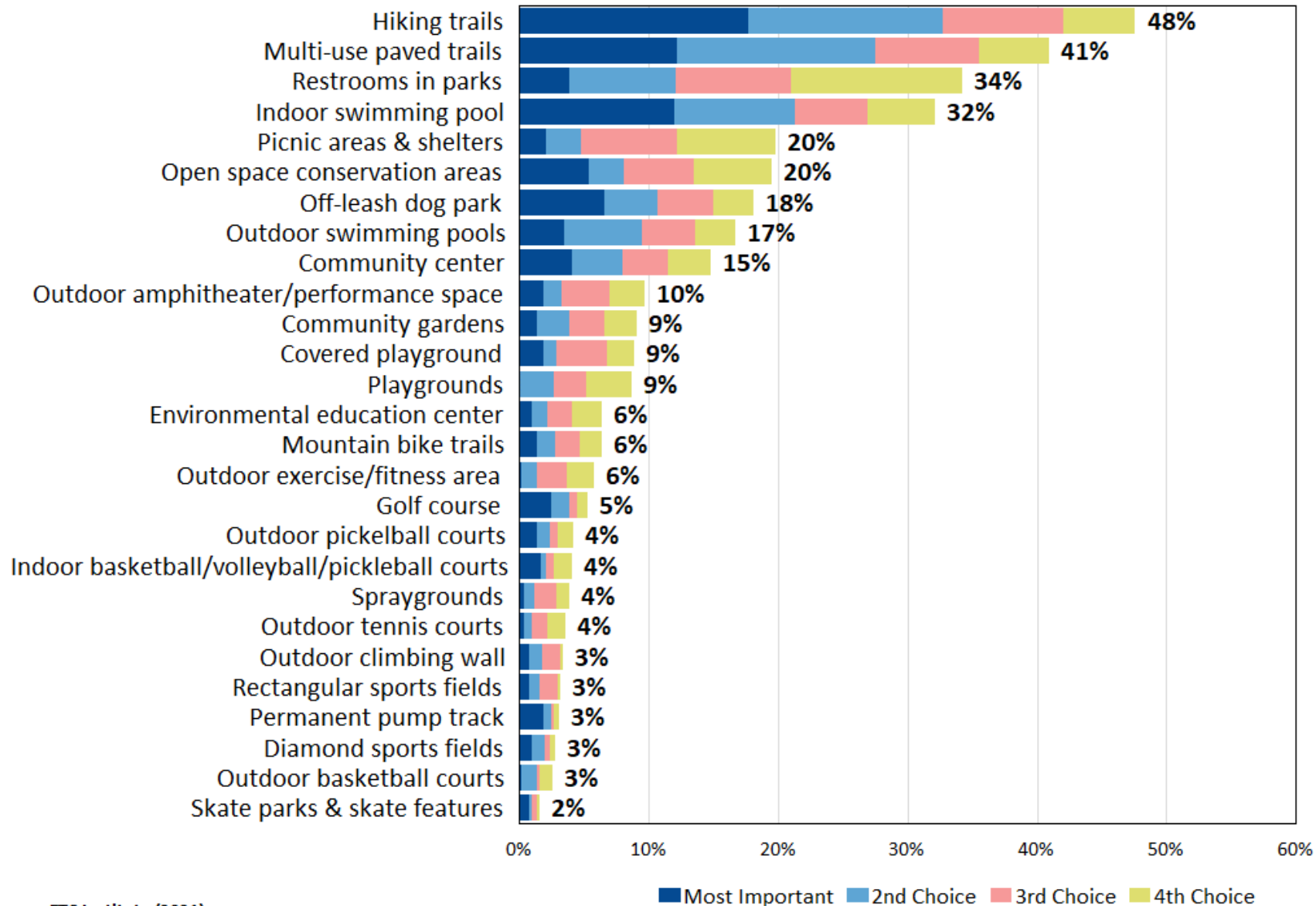


Source: ETC Institute (2021)

Highest Unmet Need is for Indoor Swimming Pool

Q8. Facilities/Amenities That Are Most Important to Households

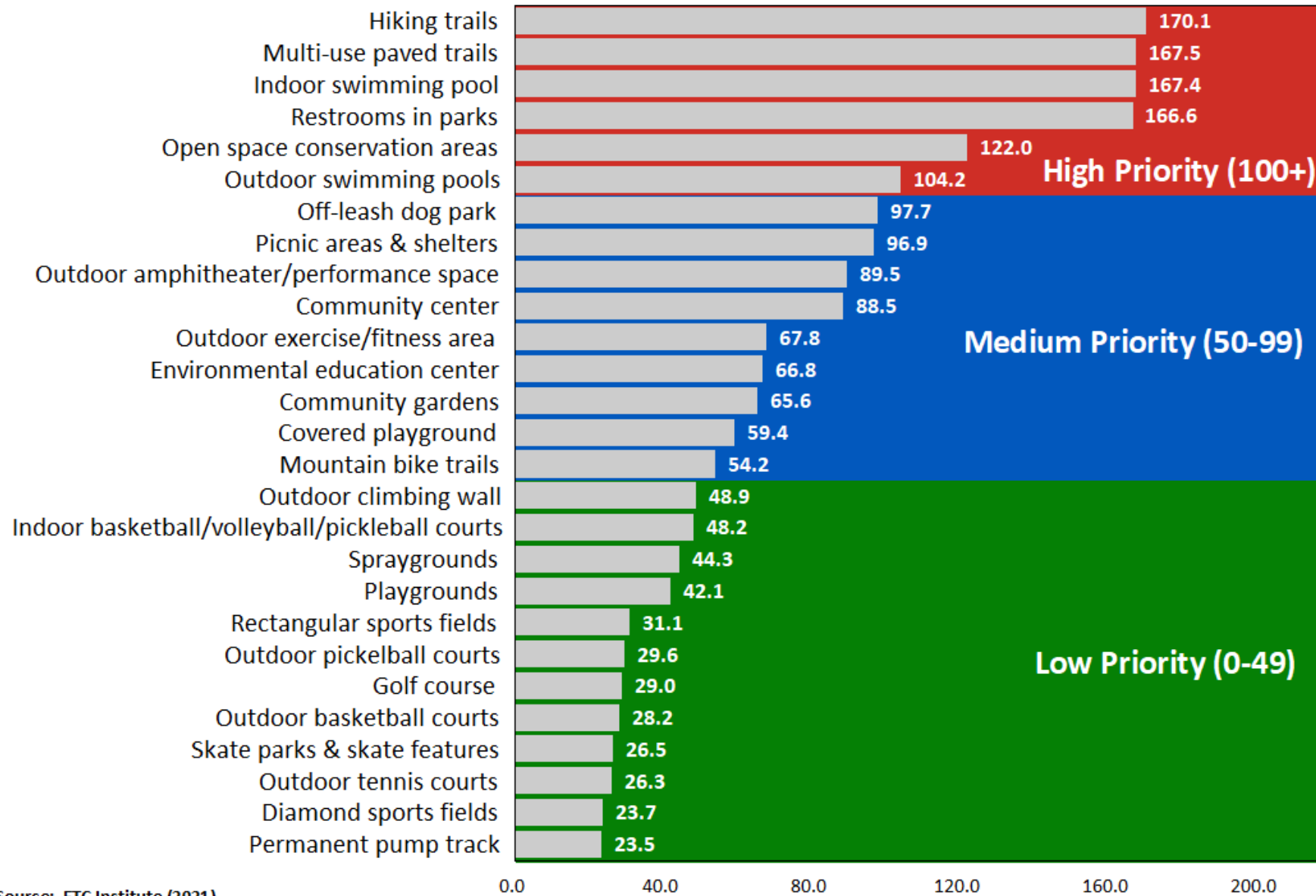
by percentage of households who selected the items as one of their top four choices



Source: ETC Institute (2021)

Trails, Restrooms, and Swimming Pools Were Top Choices

Top Priorities for Investment for Parks and Recreation Facilities/Amenities Based on the Priority Investment Rating (PIR)

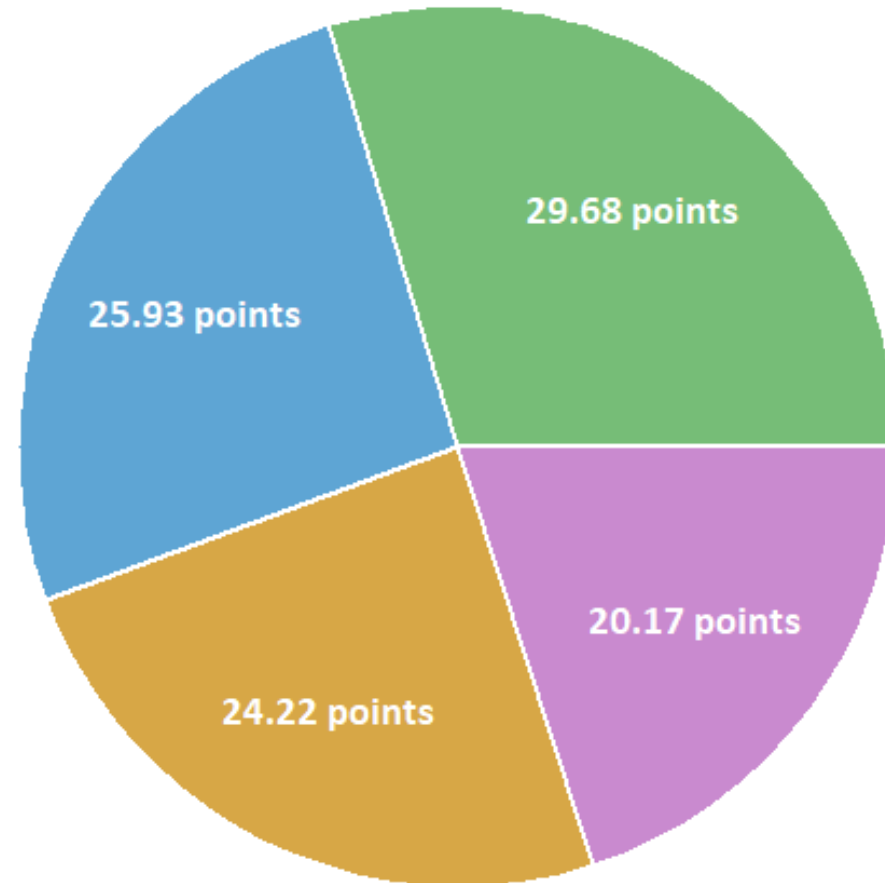


Source: ETC Institute (2021)

High Priority Items Benefit the Largest Number of Residents

Q2. If you were going to distribute 100 points to indicate your priorities for the Parks, Arts and Recreation Department, how many points would you give to each of the following?

by percentage of respondents



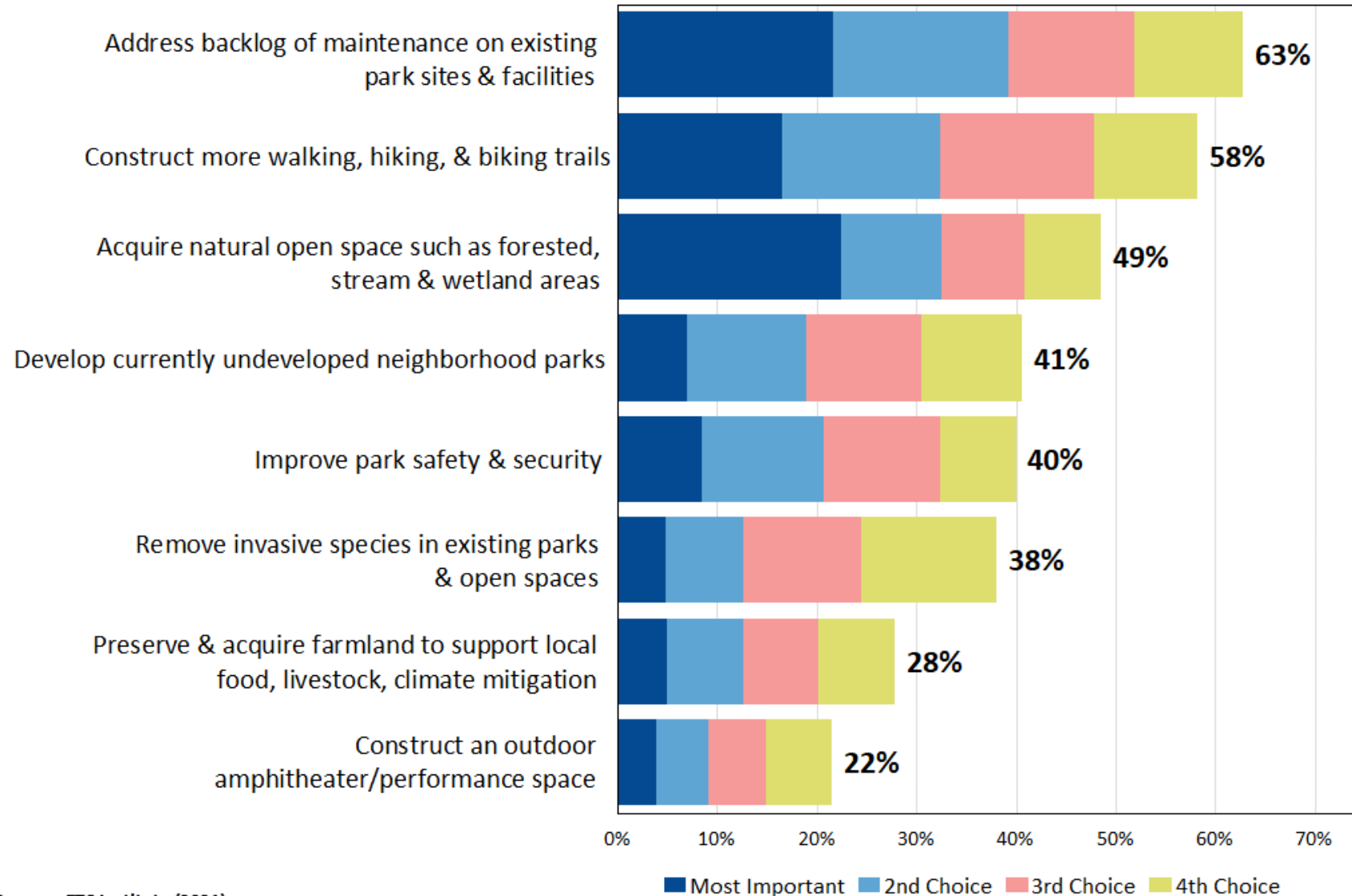
- Address backlog of maintenance on existing facilities
- Improve & upgrade existing City park facilities
- Buy land for future park use & open space
- Develop new parks & recreation facilities

Source: ETC Institute (2021)

Fairly Even Split Suggesting a Balanced Approach

Q6. Potential actions to improve the parks and recreation system that are the most important to households

by percentage of households who selected the items as one of their top four choices



Source: ETC Institute (2021)

Prioritizing Maintenance and Trail Construction are Most Important to Households

Random Sample Survey Results



Facility/Amenity Priority Investments

1. Hiking Trails (PIR=170.1)
2. Multi-use Paved Trails (PIR=167.5)
3. Indoor Swimming Pool (PIR=167.4)
4. Restrooms in Parks (PIR=166.6)
5. Open Space Conservation Areas
(PIR=122.0)
6. Outdoor Swimming Pools
(PIR=104.2)

Equity Analysis for Prioritization of Future Park Development



Goal of Analysis:

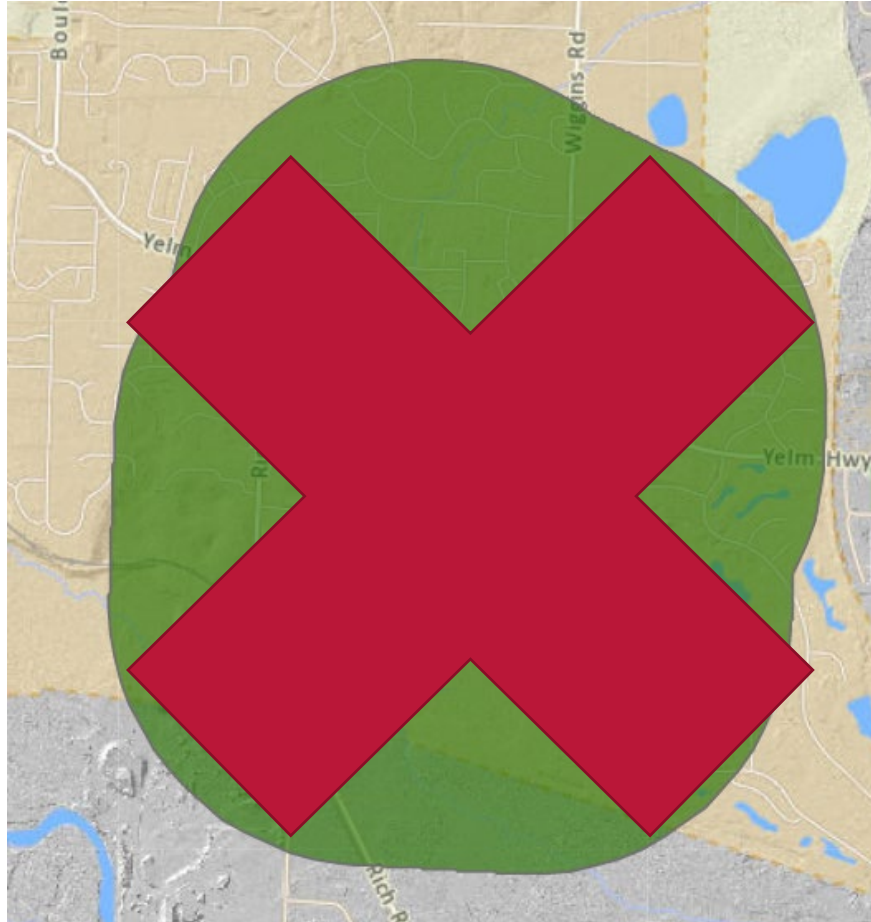
Look at equity-associated demographic parameters in the undeveloped park service areas to help inform the order in which future parks are developed.



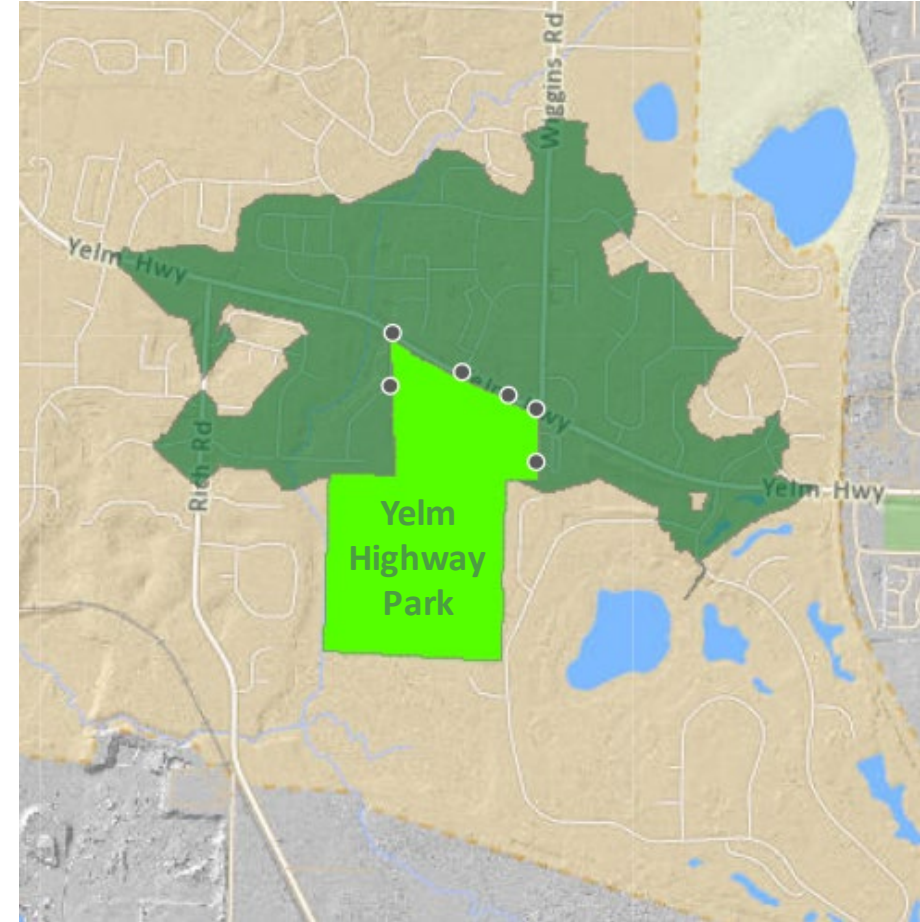
Park Service Area



- ½ mile distance (10 min. walk)
- Along street/trail network
- Starting at park entrances



½ Mile - "As the Crow Flies"



½ Mile - Along Street/Trail Network

Demographic Parameters

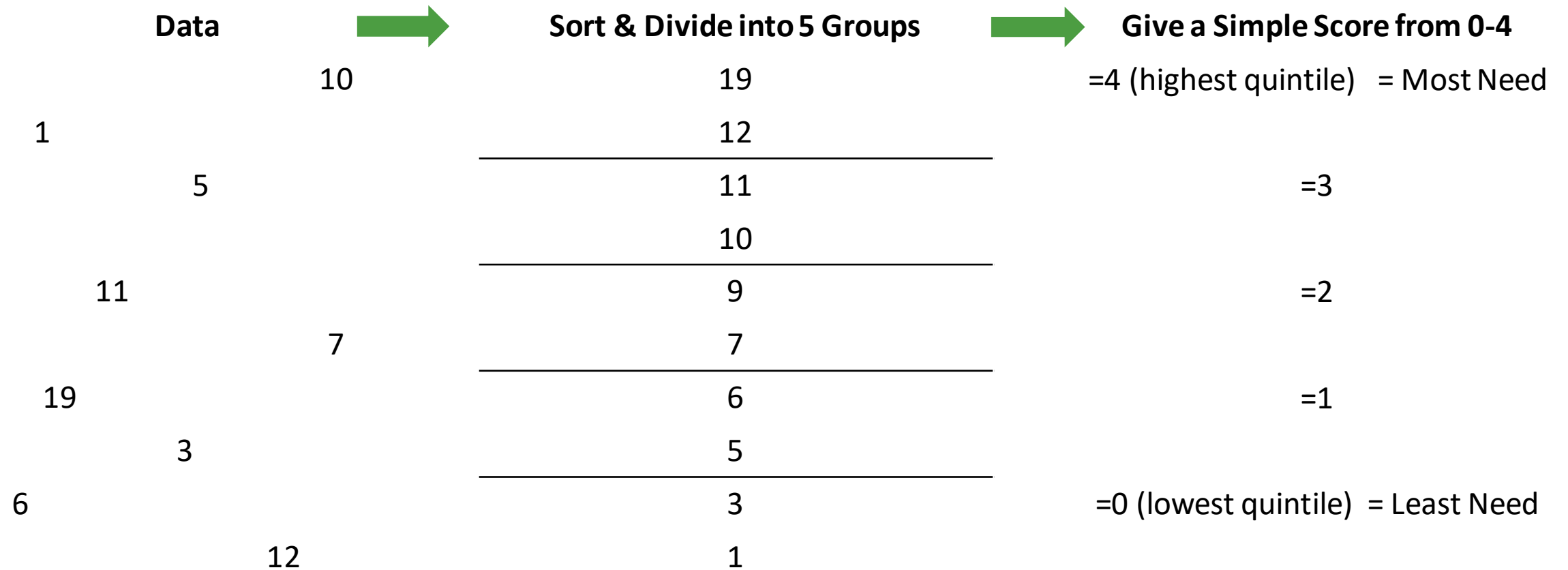


Criteria	Exact Variables
Poverty	2018 Households Below the Poverty Level
Race/Hispanic	2020 Total Non-White and White Hispanic
Age 65+ and <18	2020 Total Population 65+ 2020 Total Population Age <18
Multi-Family	2018 Housing: Multi-Family

- All 2018 variables from 2013-2018 American Community Survey
- All 2020 variables from ESRI 2020 Updated Demographic Data
- All calculations created using ESRI's Community Analyst software



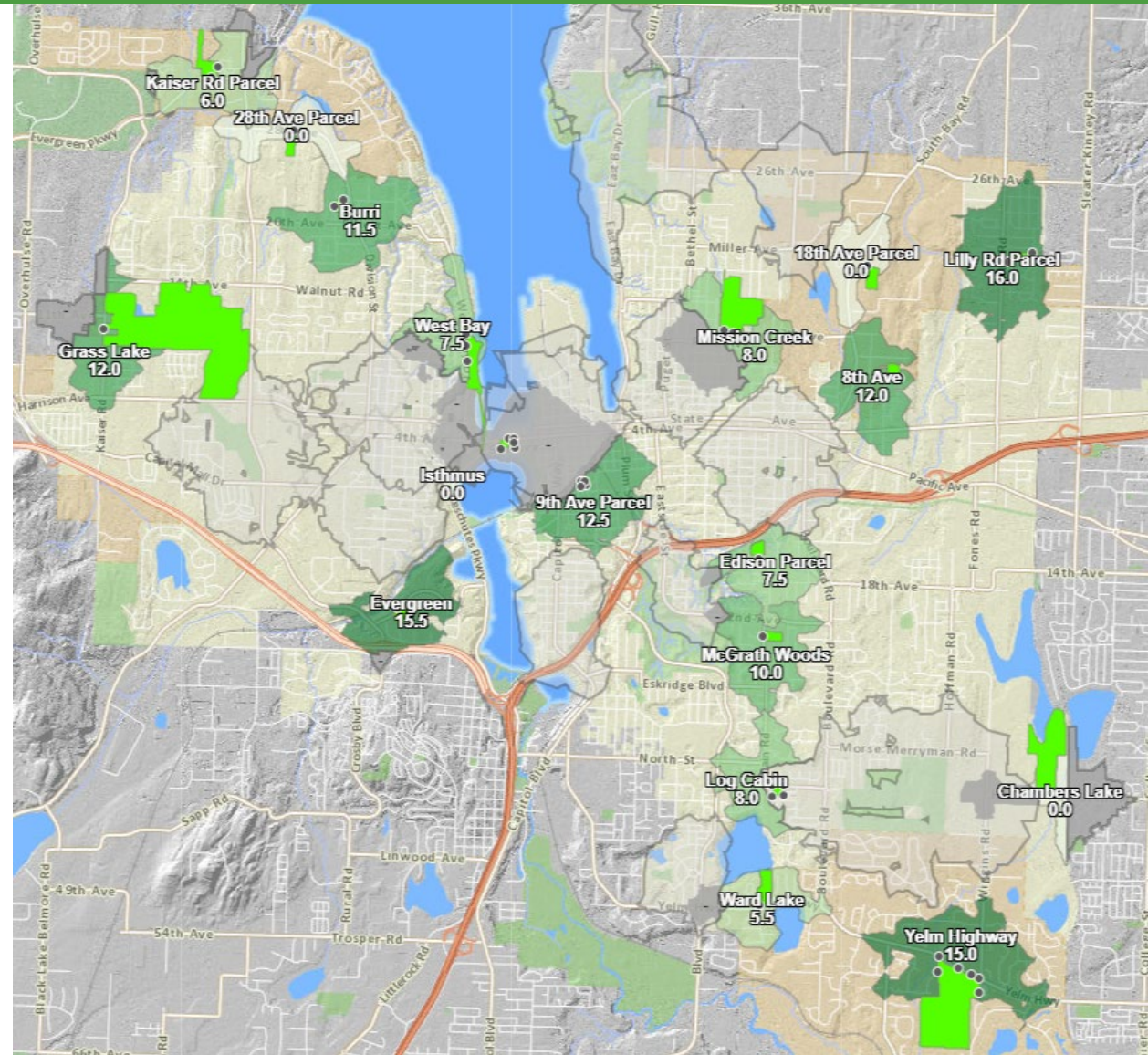
Quintile Statistical Method



Results



Park	Total Score
Lilly Rd Parcel	16
Evergreen	15.5
Yelm Highway	15
9th Ave Parcel	12.5
8th Ave	12
Grass Lake	12
Burri	11.5
McGrath Woods	10
Mission Creek	8
Log Cabin	8
West Bay	7.5
Edison Parcel	7.5
Kaiser Rd Parcel	6
Ward Lake	5.5
Isthmus	0
28th Ave Parcel	0
18th Ave Parcel	0
Chambers Lake	0



Interactive Web Map



Equity Analysis for Prioritization of Future Park Development

Undeveloped parks were scored based on who they would serve with the goal of advancing equity. Click polygons for details.

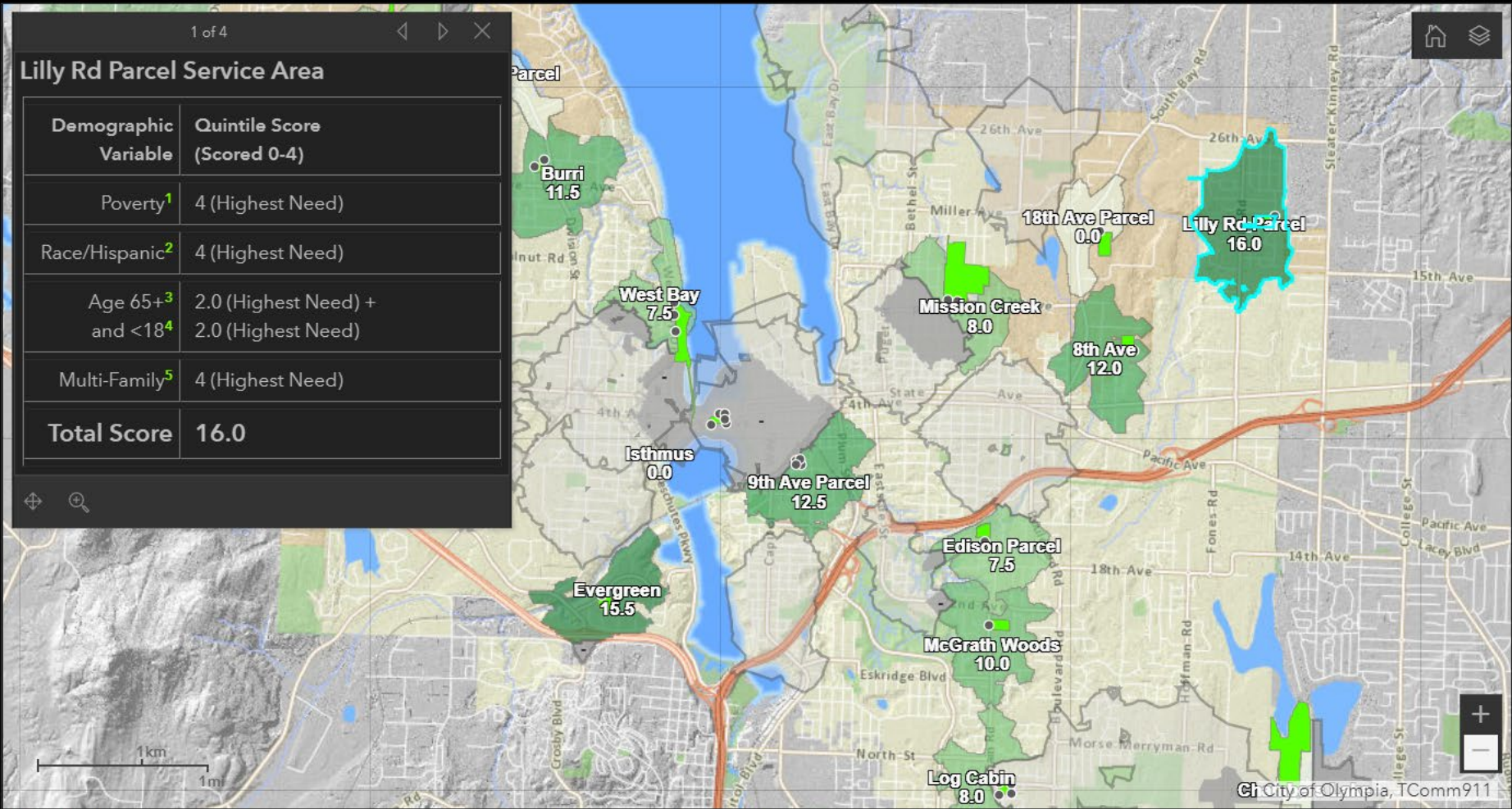
Total Score
(click for more details)

Lilly Rd Parcel - 16
Evergreen - 15.5
Yelm Highway - 15
9th Ave Parcel - 12.5
8th Ave - 12
Grass Lake - 12
Burri - 11.5
McGrath Woods - 10
Mission Creek - 8
Log Cabin - 8
West Bay - 7.5
Edison Parcel - 7.5
Kaiser Rd Parcel - 6
Ward Lake - 5.5
Isthmus - 0
28th Ave Parcel - 0
18th Ave Parcel - 0
Chambers Lake - 0

1 of 4

Lilly Rd Parcel Service Area

Demographic Variable	Quintile Score (Scored 0-4)
Poverty ¹	4 (Highest Need)
Race/Hispanic ²	4 (Highest Need)
Age 65+ ³ and <18 ⁴	2.0 (Highest Need) + 2.0 (Highest Need)
Multi-Family ⁵	4 (Highest Need)
Total Score	16.0



Undeveloped Park Entrances

○

Undeveloped Parks

■

Developed Park Service Areas

■

Undeveloped Park Service Areas

■

Total Score

> 16

8

< 0

Data details: 1/2 mile service areas were evaluated into quintiles based on 2020 Total Population, ¹ 2018 Households Below the Poverty Level, ² 2020 Total Non-White and White Hispanic, ³ 2020 Total Population 65+, ⁴ 2020 Total Population Age <18, and ⁵ 2018 Housing: Multi-Family. All 2018 variables are from the 2013-2018 American

Top Themes Moving Forward



- Balance of investments
 - Acquisition
 - Maintenance
 - Development
- Major projects are still priorities
- Trails
- Swimming Pool
- Restrooms
- Equity
- Climate



Timeline & Next Steps



- Public Review Draft – September 2021
 - Engage Olympia
 - Parks & Recreation Advisory Committee
 - Arts Commission
- Revised Draft – December 2021
 - City Council Public Hearing – January 2022
 - City Council Approval – February 2022
- RCO Deadline – March 1, 2022





For More Parks Plan Details:
olympiawa.gov/parksplan