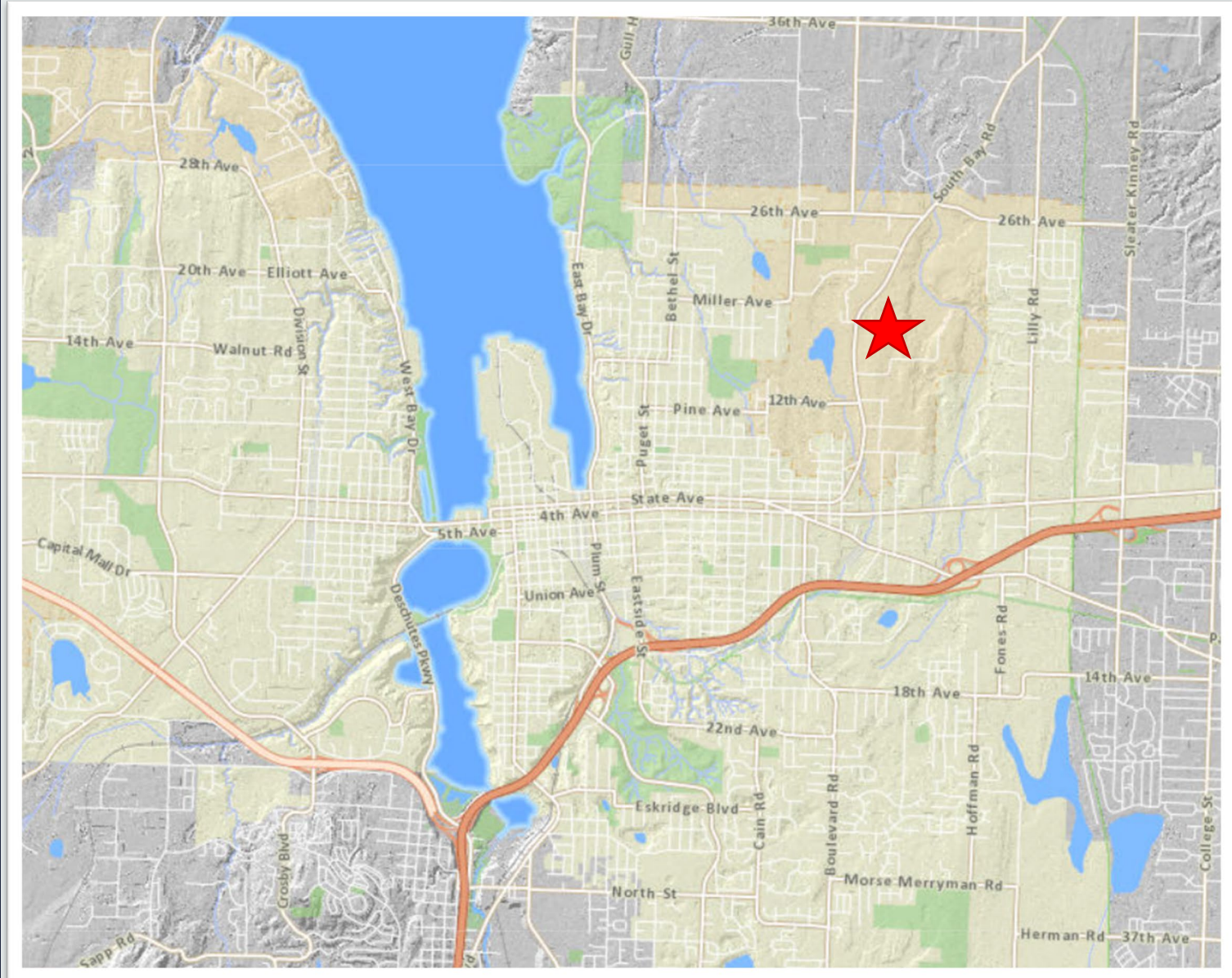


# Park Land Acquisition – 18<sup>th</sup> Ave Site

# 18<sup>th</sup> Ave Parcel

2803 18<sup>th</sup> Ave NE

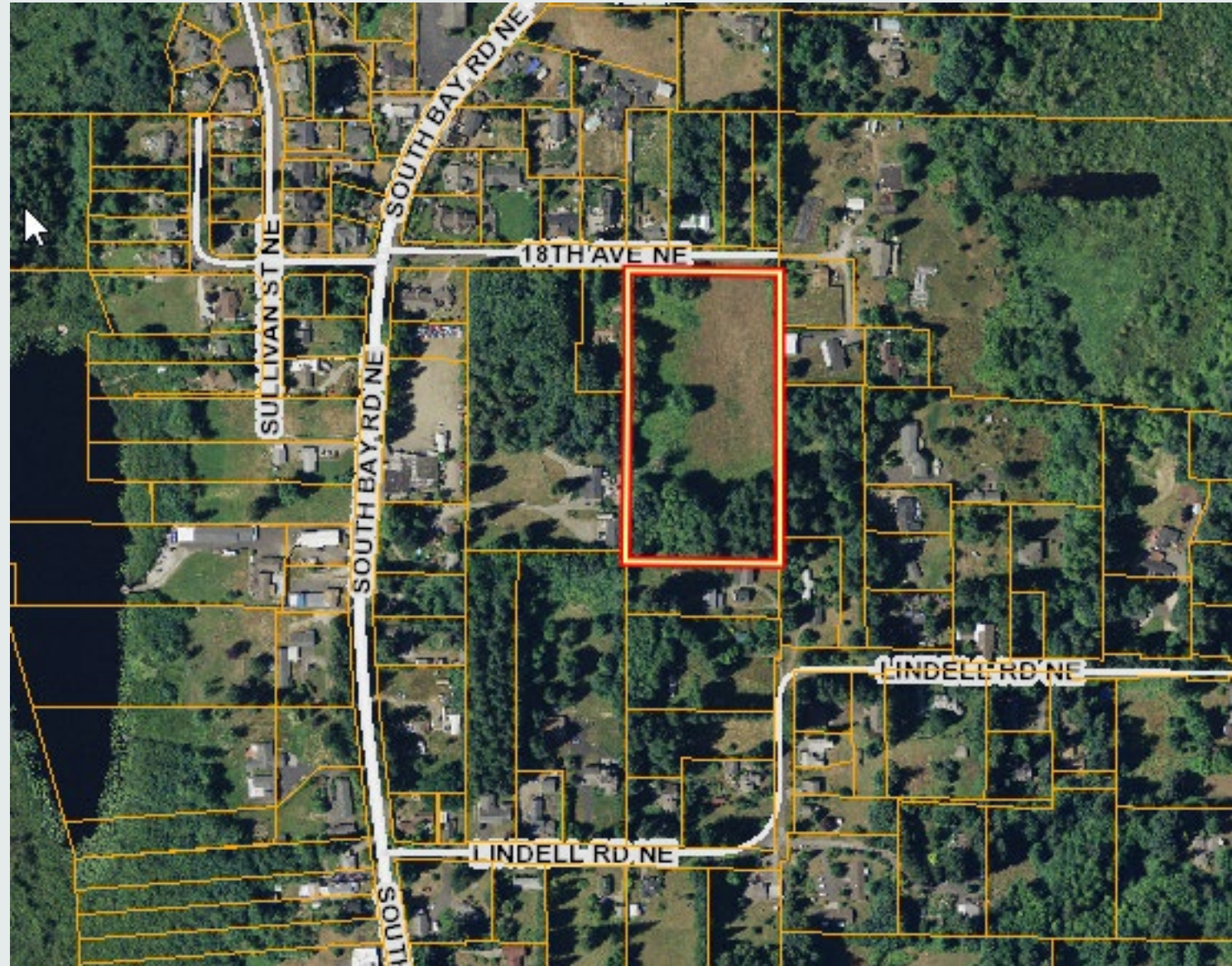
- In NE Urban Growth Area on 18th Ave off South Bay Road
- 5.98 Acres
- \$241,500



# 18<sup>th</sup> Ave Parcel

2803 18<sup>th</sup> Ave NE

- In NE Urban Growth Area on 18th Ave off South Bay Road
- 5.98 Acres
- \$241,500



# 18<sup>th</sup> Ave Parcel

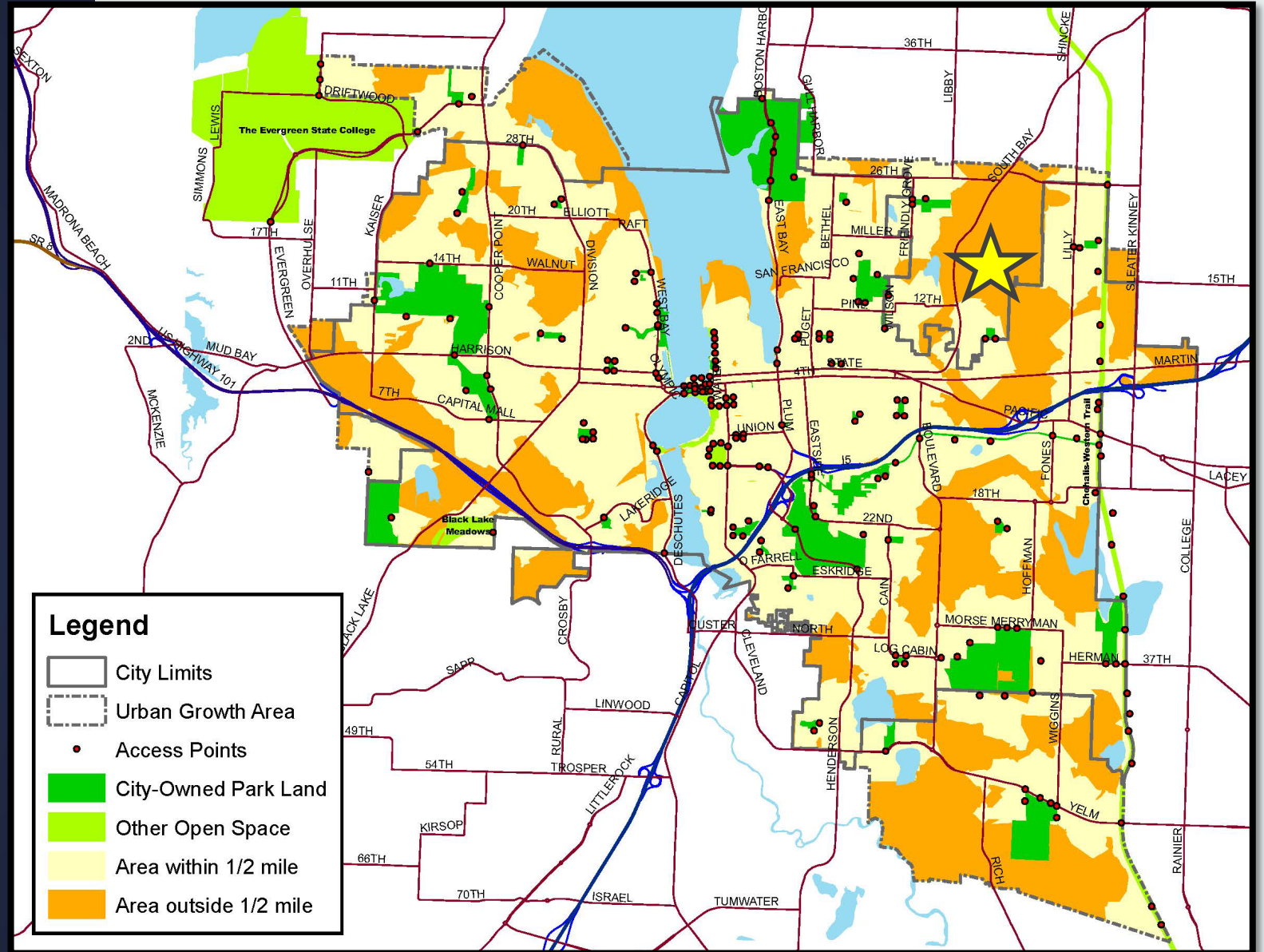
2803 18<sup>th</sup> Ave NE

- In NE Urban Growth Area on 18th Ave off South Bay Road
- 5.98 Acres
- \$241,500



# Walking Distance Map

- This acquisition is in an area that is not currently walking distance to a park



# Acquisition Update

- This acquisition brings us to 461 acres purchased since 2004 funding measure
- This is the fourth of ten neighborhood park sites identified in the 2016 Parks, Arts and Recreation Plan

