



## EXHIBIT A

(Terra Cotta colored concrete pedestrian crosswalk)

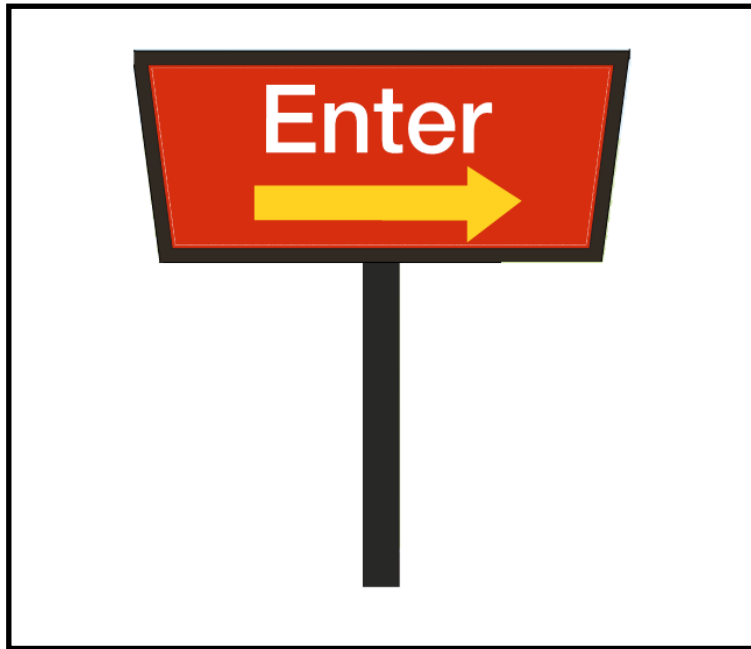


EXHIBIT B

(Entryway directional and pedestrian crossing signs)

**A: Cutleaf Weeping Birch**



**B: Scotch Pine**





**C: Glen's Form Flowering Pear**



**D: Rosehill Oak**



**E: Evergreen Clematis**



**F: Dwarf Winged Euonymus**





**G: Flame Grass**



**H: Mugo Pine**





**I: 'Otto Luyken's' Laurel**



**J: 'Anthony Waterer' Spiraea**





**K: Dense Spreading Yew**



**L: David's Viburnum**





**M: Kinnikinnick**



**N: 'Evergold' Sedge**





**O: 'Coral Beauty' Cotoneaster**



**P: Mexican Feather Grass**





**Q: Salal**



**R: Blue Oat Grass**



**S: 'Elijah Blue' Blue Fescue**



**T: 'Little Bunny' Fountain Grass**





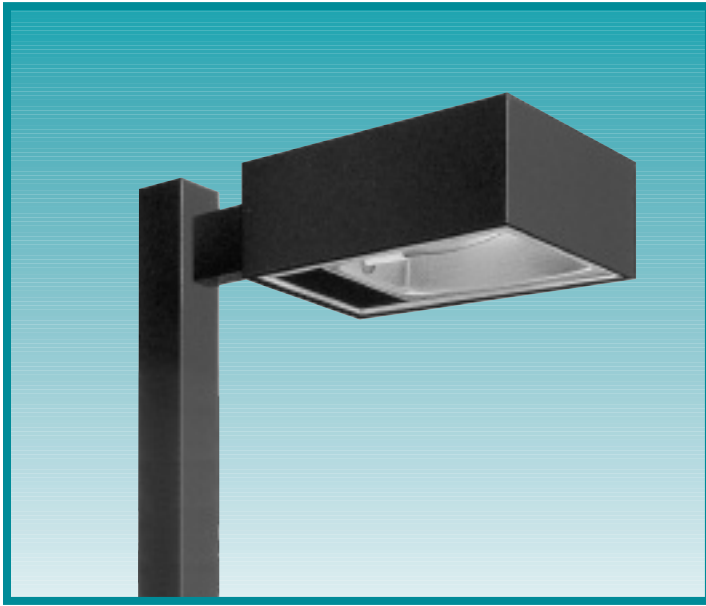


## EXHIBIT D

(Example photo of a typical light fixture)

# RSB-RCS/L SERIES

## Attachment 6

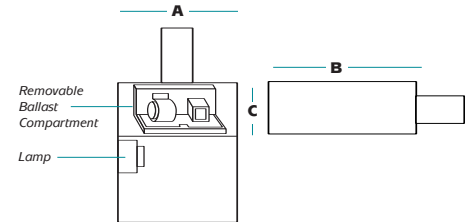


The RSB-RCS/L Series rectangular shoebox is offered in a variety of lighting distributions with sharp cutoff to meet the challenging demands of today's site lighting projects.



## Fixture Specifications

- One-piece formed aluminum housing
- Hydroformed aluminum reflector
- Die cast zinc latches permit tool-free entry
- High power factor ballast with -20°F starting
- Consult factory for glare shield options
- Lamp and arm included
- Flat tempered glass lens
- Luminaire finished in weatherproof powder-coat paint
- Available with photocell and polycarbonate shield
- Rotatable optics (RCL only)
- UL listed for wet locations



### ORDERING INFORMATION

#### SAMPLE CATALOG NUMBER

**RSB-RCX XXXXXXXX XX X XX**

Series      Wattage/Source      Finish      Distribution      Voltage

SERIES	
<b>RSB-RCS</b>	RSB Series - Small
<b>RSB-RCL</b>	RSB Series - Large

WATTAGE/SOURCE <sup>1</sup>	
<b>100PMH</b>	100 watt pulse start metal halide (RCS)
<b>175PMH</b>	175 watt pulse start metal halide (RCS)
<b>250PMH</b>	250 watt pulse start metal halide (RCS)
<b>320PMH</b>	320 watt pulse start metal halide (RCS/L)
<b>1000MH</b>	1000 watt metal halide (RCL)
<b>100HPS</b>	100 watt high pressure sodium (RCS)
<b>150HPS</b>	150 watt high pressure sodium (RCS)
<b>250HPS</b>	250 watt high pressure sodium (RCS)
<b>400HPS</b>	400 watt high pressure sodium (RCS/L)
<b>1000HPS</b>	1000 watt high pressure sodium (RCL)

FINISH <sup>2</sup>	
<b>DB</b>	Dark Bronze
<b>BK</b>	Black
<b>WH</b>	White
<b>PS</b>	Platinum Silver

DISTRIBUTION	
<b>3</b>	Type III
<b>4</b>	Type IV
<b>5</b>	Type V (square)

VOLTAGE	
<b>MT</b>	Multi-tap ballast (120, 208, 240, 277)
<b>48</b>	480 volt

<sup>1</sup> Consult factory for other wattages and Pulse Start availability.  
<sup>2</sup> Consult factory for other finishes.

A	B	C	EPA	WEIGHT
<b>RSB-RCS</b>				
16.25"	23.5"	8.5"	2.1 ft <sup>2</sup>	42 lbs.
<b>RSB-RCL</b>				
22.25"	30"	10.5"	3.0 ft <sup>2</sup>	70 lbs.



A HUBBELL LIGHTING, INC. COMPANY

**Performance Designed Lighting Products**

1085 Johnson Drive • Buffalo Grove, IL 60089 • TOLL-FREE: 800-544-4848 • PHONE: 847-279-0627 • FAX: 847-279-0642

[www.securitylighting.com](http://www.securitylighting.com)

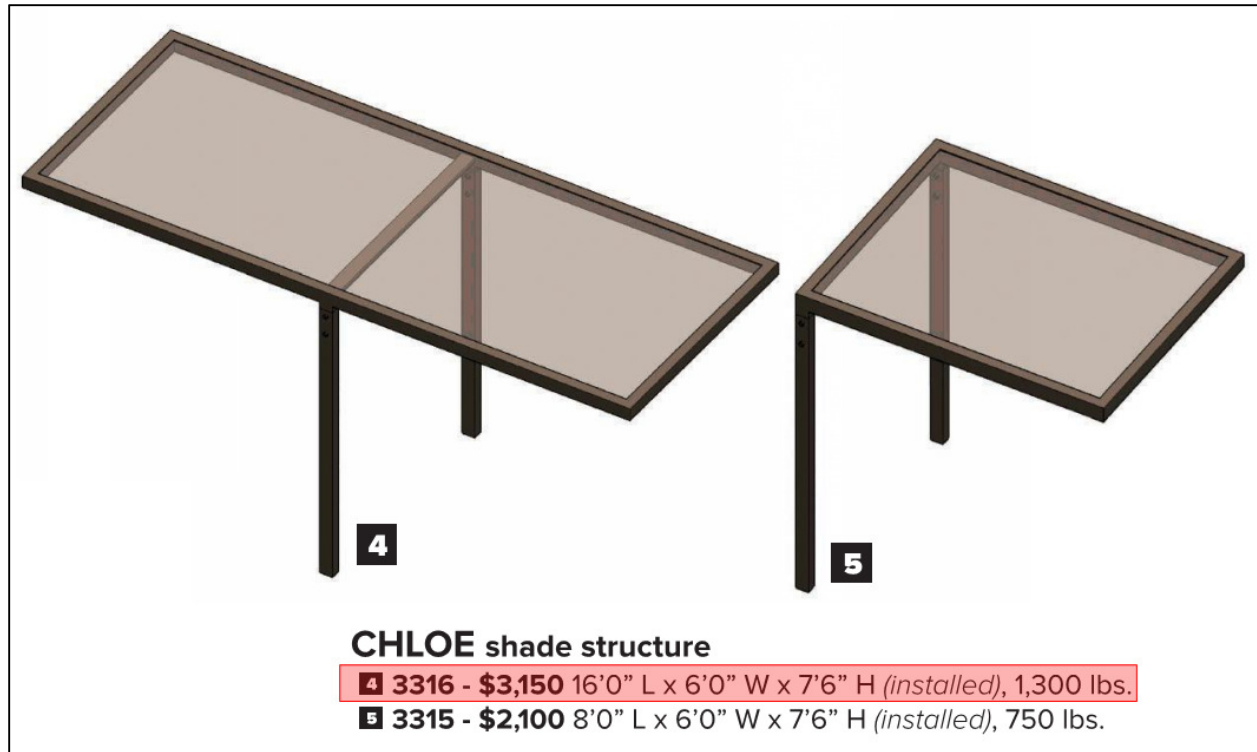
# EXHIBIT D





## EXHIBIT E

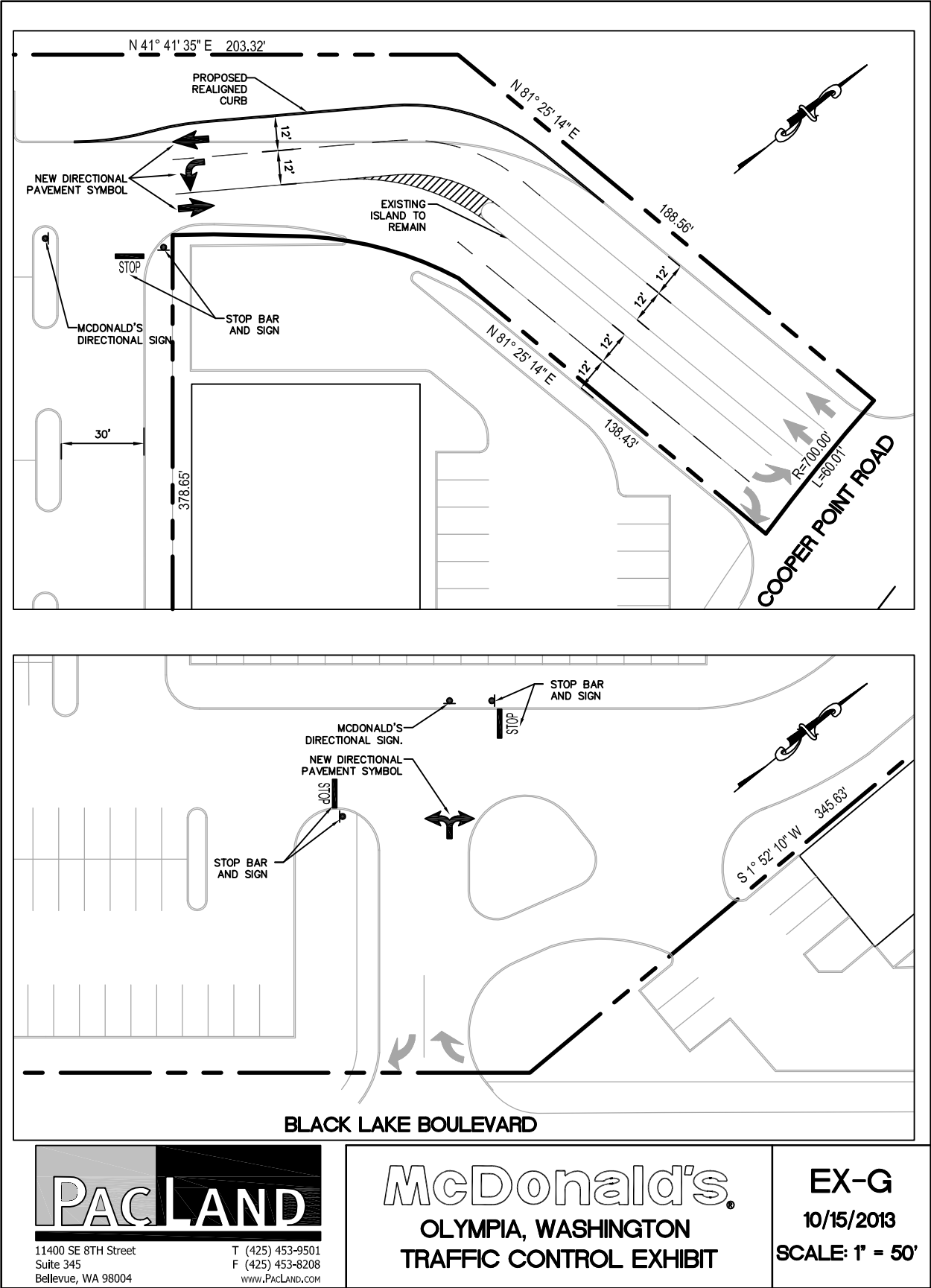
(Surface mounted inverted 'U' bike rack)



## EXHIBIT F

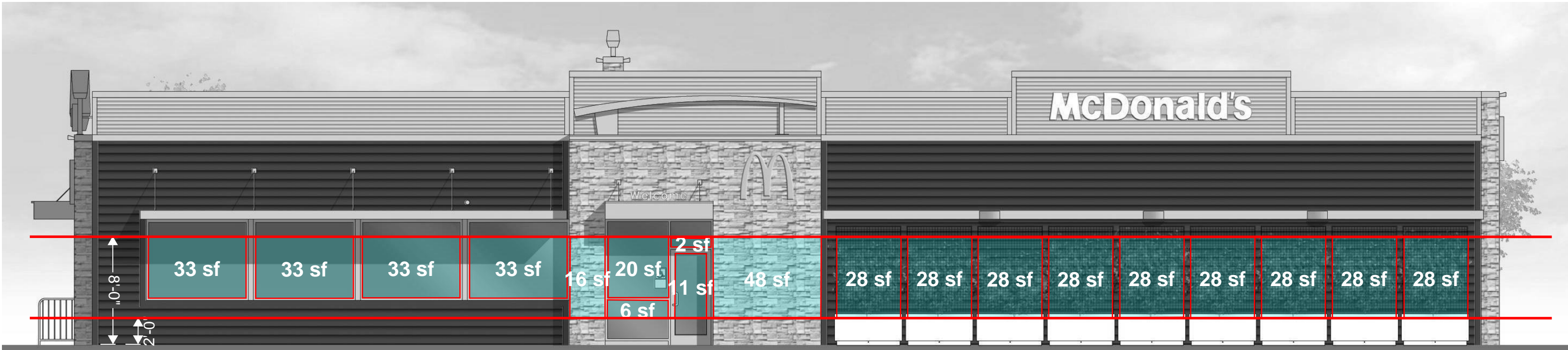
(Proposed cover for bike storage area)







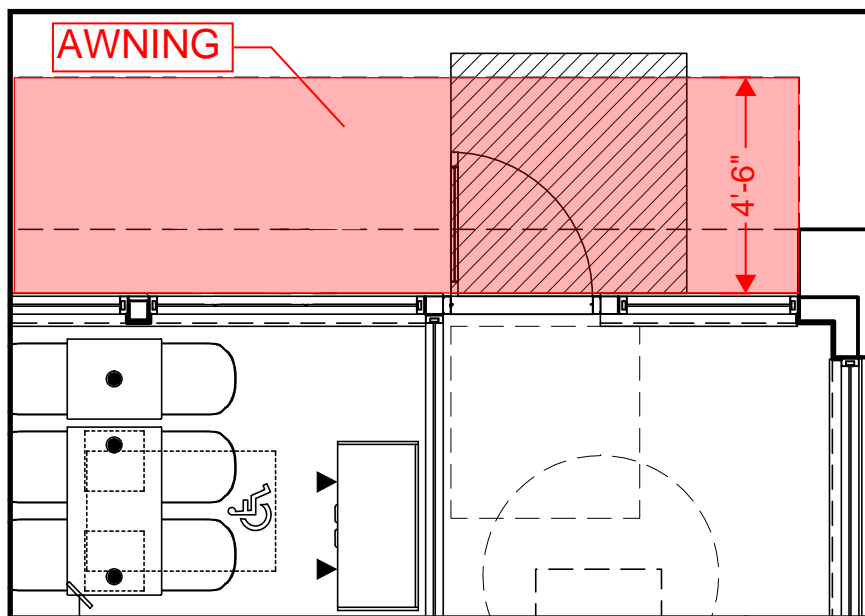
**Total Wall Area (Between 2' and 8' above grade) = 624 SF**



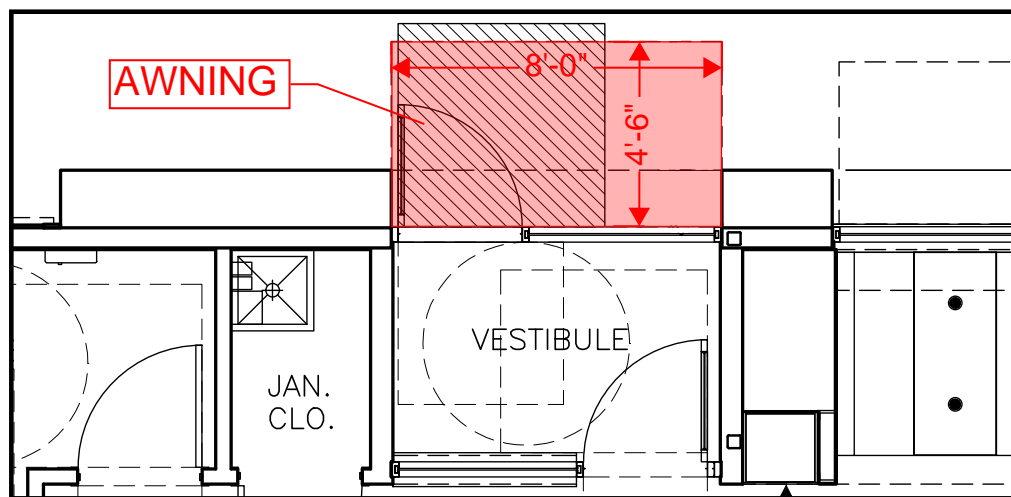
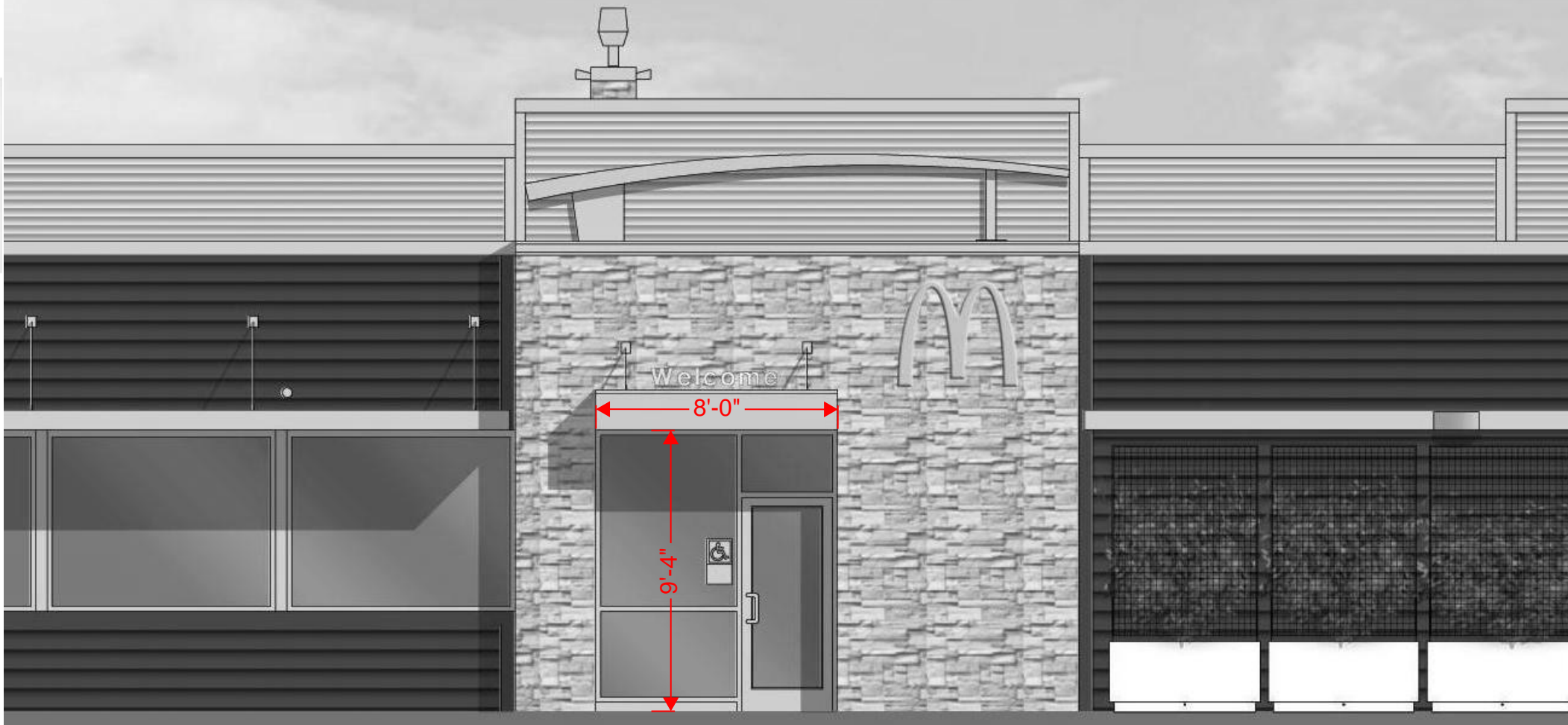
**Glazing and Wall Coverage Areas (Between 2' and 8' above grade) = 487 SF  
(78.0% of Wall Area)**

**EXHIBIT J - GLAZING**  
**Non-Drive-Thru Elevation**  
**(FACING BLACK LAKE BLVD.)**





**EXHIBIT K - AWNING DIMENSIONS**  
**Front Elevation**  
**(FACING HWY 101)**



**EXHIBIT K - AWNING DIMENSIONS**  
**Non-Drive-Thru Side Elevation**  
**(FACING BLACK LAKE BLVD.)**