

# 2024-2029 NPDES Phase II Municipal Stormwater Permit for Western Washington Re-issuance Process

Utility Advisory Committee

June 6, 2024





Issuance Date: July 1, 2019  
Effective Date: August 1, 2019  
Expiration Date: July 31, 2024

## Western Washington Phase II Municipal Stormwater Permit

National Pollutant Discharge Elimination System and  
State Waste Discharge General Permit for discharges from  
Small Municipal Separate Storm Sewers  
In Western Washington

State of Washington  
Department of Ecology  
Olympia, WA 98504-7600

In compliance with the provisions of  
The State of Washington Water Pollution Control Law

Issuance Date: July 1, 2024  
Effective Date: August 1, 2024  
Expiration Date: July 31, 2029

## DRAFT WESTERN WASHINGTON PHASE II MUNICIPAL STORMWATER PERMIT

National Pollutant Discharge Elimination System and  
State Waste Discharge General Permit for discharges from  
Small Municipal Separate Storm Sewer Systems  
In Western Washington

**DRAFT**  
State of Washington  
Department of Ecology  
Olympia, WA 98504-7600

In compliance with the provisions of  
The State of Washington Water Pollution Control Law  
Chapter 90.48 Revised Code of Washington



# Agenda

- Permit Overview
- Permit History
- Reissuance Process
- Proposed New Requirements/Changes
- Questions & Discussion

- EPA Federal Rule for Phase II - 1999
- Ecology administers permit
- All permit versions build on prior version

### **Phase I (since 1995)**

King, Pierce, Snohomish, Clark Counties; Seattle and Tacoma

# Western WA Phase II Permit History

---

- Federal CWA Section 402(p)(3)
- RCWs 90.48.030 and 90.48.162
- Versions Issued:
  - 2007 (first version)
  - 2012
  - 2019
  - (Also, Eastern WA Phase II)

- Effectively prohibit non-stormwater discharges to MS4
- Reduce discharge of pollutants to surface waters to the Maximum Extent Practicable

### **Western WA Phase II**

- 83 Cities
- 5 Counties
- Secondary Permittees
- (Ports, Schools, Irrigation districts etc.)





# Permit Overview

---

- Stormwater Planning
- Mapping
- Construction & Redevelopment
- Operations & Maintenance
- Source Control for existing development
- TMDL & Monitoring





# Program Details

- Controlling Runoff from New Development
- Education & Outreach
- Public Involvement
- Training & Workshops
- Illicit Discharge Detection & Elimination

2021 AD-hoc groups that  
coordinated with Ecology  
and WSU Washington  
Stormwater Center

### **February – Spring 2022**

- Early Input to Ecology
- Listening Sessions

### **October 2022 - March 2023**

- Informal Drafts and  
comment period

### **August – November 2023**

- Draft Permits and Public  
Hearings

# Reissuance Process

---

- July 2024 - Final  
Decision and Permit  
Issuance



- Project review thresholds lowered (tire wear nexus)
- Wetland hydroperiod criteria
- Climate resilience guidance



- Nutrient and toxic organics BMP guidance
- Bioretention soil mixes
- TMDL requirements (Budd Inlet, Deschutes and Tributaries, Henderson Inlet)

## Updated Western WA Stormwater Manual

---

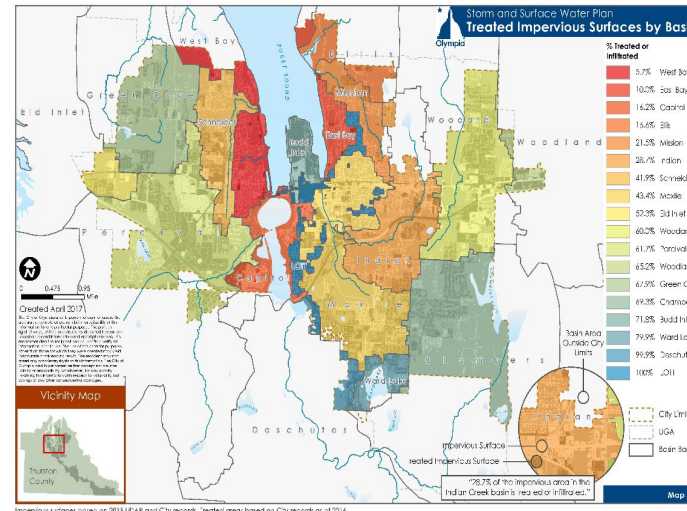
- Stormwater Management Manual Western Washington proposed changes
- 2024 Manual draft will be Finalized in July 2024
- Olympia will need to adopt equivalent by June 30, 2027

- 5.5 Acres of untreated impervious to be treated by 2029
- Enhanced Street Sweeping Requirements



## Expected Changes/New Requirements

- Stormwater Retrofit Programs & Structural Stormwater Controls
- Updated Stormwater Planning Requirements







- Tree Canopy Mapping/Goals
- Mapping (Outfall details)

### Enhanced Source Control

- Tire Wear (6PPD-Q)
- PCBs - BMPs
- PFAS



## Expected Changes/New Requirements (continued)

---

- Environmental Justice (HEAL Act)
- TMDL requirements (Budd Inlet, Deschutes and Tributaries, Henderson Inlet)





# Questions & Discussion

---



# Thank You

**Jesse Barham**

Water Resources Director

**Timmie Maturan-Lee**

Environmental Services  
Supervisor

