

Additional Research on C.R. Harris Paint Headquarters/Christensen Radio Shop 302-304 4th Avenue E (Currently Dumpster Values)

- Thurston County Assessor lists a construction date of 1928 for this building and the Avalon Theatre. This is supported by other historical evidence.
- While reliable historical maps and images for this corner **prior to the current building's construction in 1928** have proved difficult to find, *Polk City Directories* indicate that this part of 4th Avenue E was occupied by **commercial enterprises** at least as far back as 1906. The longest-running business on this site up until 1928 appears to have been Miles & Scofield, sellers of sporting goods, from ca. 1909 to ca. 1927. The 1929-30 Polk Directory lists "Elwyn P. Miles (sporting goods)" at 107 N Capitol Way).
- The full results of Polk Directory research are listed below. Because addresses were known to have changed over time, listings for numerically adjacent addresses are provided when possible. Also, because of early inconsistencies in using directional in address identification, listings for the earlier dates may either be 4th Avenue East or 4th Avenue West.
- **Christensen's radio shop** is first listed in Polk City Directories in 1932 as "The Radio Shop, A. Henry Christensen", at 518 Capitol Way. It is unclear if the Broadway Radio Shop listed in 1929-1930 at 302 4th Avenue was related to Christensen. Christensen's Radio Shop is listed by this name at the 304 4th Avenue E address from 1934 to 1968.
- The first mention in the Polk Directories of **C. R. Harris'** paint shop is in 1932. That year, his paint business is listed at 300 4th Avenue E. As Sherwin-Williams, the paint shop was last listed at this address in 1975.
- Sanborn Fire Insurance Company maps were also consulted when available.

Current Aerial Image of Area



Figure 1: 2015 aerial image showing building, Olympia Online Mapping.

Polk Directories:

1906:

300 4th = Whiteside Undertaking Co
 304 E 4th = F.W. Peele

1909:

304 4th = Miles & Scofield

1913-14:

300 4th = Miles & Scofield

1915-16:

300 4th = Miles & Scofield (sporting goods)
 304 E 4th = G.R. Ridgeway (optometrist)
 304 4th = Independent Publishing Co.
 306 E 4th = C.A. Garrett (fire insurance agent & real estate); Casco Company (real estate)
 308 ½ 4th = Sidney Rankin (fire insurance)

1926:

300 4th = Miles & Scofield (sporting goods)
 304 4th = John Pashalides (retail confectioner)
 304 4th = Wilson & Hunter (insurance agents)
 308 4th = O.H. Hartson & Son (insurance agents)
 308 4th = Claremont Hotel
 308 ½ 4th = Wm. Mallett (jeweler)

1927:

300 4th = Miles & Scofield

1929-1930:

302 4th = Broadway Radio Shop
 304 4th = J.C. Johnson (grocers)
 306½ 4th = Olympia Radio Service
 308 4th = Avalon Theatre

1932:

300 4th E = C.R. Harris Paint Headquarters
 304 4th = (*no listing*)
 306 4th = Capital Loan Office (pawn brokers)
 306½ 4th = Avalon Barber Shop
 308 4th = Avalon Theatre

1934:

300 4th E = C.R. Harris Paint Headquarters
 304 4th E = Christensen's Radio Shop
 306½ 4th E = Avalon Barber Shop
 308 4th E = Avalon Theatre

1941:

- 300 4th E = C.R. Harris Paint Headquarters (distributors for Sherwin-Williams)
- 304 4th E = Christensen's Radio Shop
- 306½ 4th E = Avalon Barber Shop
- 308 4th E = Avalon Theatre

1951-52:

- 300 4th E = C.R. Harris Paint Headquarters (distributors for Sherwin-Williams)
- 304 4th E = Christensen's Radio Shop
- 306½ 4th E = Avalon Barber Shop
- 308 4th E = Avalon Theatre (*last year this listing appears in the Polk Directories*)

1960:

- 300 4th E = Sherwin-Williams
- 304 4th E = Christensen Radio Shop

1969:

- 300 4th E = Sherwin-Williams
- 304 4th Ave E = State Veterans Rehab Council

1975:

- 300 4th E = Sherwin-Williams
- 304 4th E = Stretch & Sew Fabrics

1976:

- 300 4th E = The Only Place In Town (clothing)
- 304 4th E = Stretch & Sew Fabrics

Thurston County Historic Property Inventory Report (attached with application)

Franklin Cox Stanton is listed architect for the Avalon Theater and Store Building, with A. H. Albertson as consulting architect for Casco Company.

American Architects Directory, 1970

Frank (Franklin Cox) Stanton, AIA 1927, Seattle Chapter (Frank Stanton, Mt Angel Towers, Mt. Angel, OR 97362)

Born: La Grange, Ga, Oct 30, 1890

Education: University of Michigan, 1912-1915.

Previous Firms: Frank Stanton, Architect, Olympia, Washington, 1928-1929, Bellingham, Washington, 1931-1941.

Present Firm: Frank Stanton, construction specif. consult. org. 1948.

Honors & Awards: First Prize, House for Two, House & Garden Magazine, 1937; First Award, Class A, for excel, in specif, CSI, 1958. Publ: Guide specifications for general building construction, 1948, 1970. Mem: Fel, CSI, 1963.

American Architects Directory, 1956

A H (Abraham Horace) Albertson, FAIA, Emeritus (508 Thirty Fourth Ave, Seattle 22)

Born: Hope, Warren Co, N.J, Apr. 14, 1872. M, (1) 1915, (2) 1946.

Education: Columbia Univ, Ph.B, Arch, 1895. Scholsp. in Arch, 1890-95. For. Trav: Eng, Fr, Hoi, Bel, Den, Ger, Aust, Ital, Jap. Draftsman, Clinton & Russell, N.Y; Supt, I. N. Phelps Stokes Estate, N.Y.

Previous Firms: Howells & Stokes, Assoc, N.Y; Howells & Albertson, Seattle; A. H. Albertson; Albertson, Wilson & Richardson; Chf. Archt, Fed. Housing Admin. Firm: Ret, 1949.

Principal Works: Govt. Housing Proj, Bremerton, Wash, 1918; Metro. Off. Bldgs, Seattle, 1924; Orthopedic Hosp, S, 1928; St. Josephs Ch, S, 1930; N. Life Tower, S, 1929; Univ. Law Sch. Bldg, S, 1933. Con. Archt: Med-Dental Bldg, Seattle, 1925; Monte Cristo Hotel, Everett, Wash; City of Seattle. Gen. Types: 1,2,4,5,7.

Honors: Mencion Honorifica, Arquitectura y Urbanistlca, Congreso Pan Americano de Arquitectos, Montevideo, Urug, 1940. Mem: Munic. League, & Rotary Club, Seattle; Phi Kappa Psi, Columbia Univ. Pub. Serv: Chmn, Bldg. Code Commission, 1922; Social Welfare League. Gov. Serv: U.S. Bur. of Educ: State Emergency Works Admin; City Fair Rentals Commission; 71 N.Y. Reg. Santiago, Cuban Campaign. Mag. Articles: Mountaineer, 1929; Amer. Archt, 1930; Archt. & Engr, 1931. AIA Mem: Wash. State Chapter, Inst. Bd. of Dir, 1926-29; P. Chmn, Judiciary Comm; State Hist. Monuments Survey.

Historical Photos & Other Images

1908 Sanborn Fire Insurance Map



Figure 2: Location of earlier building on site of 1928 building.
Digital image care of Timberland Regional Library.

1924 Sanborn Fire Insurance Map



Figure 3: Location of earlier building on site of 1928 building.
Digital image care of Timberland Regional Library.

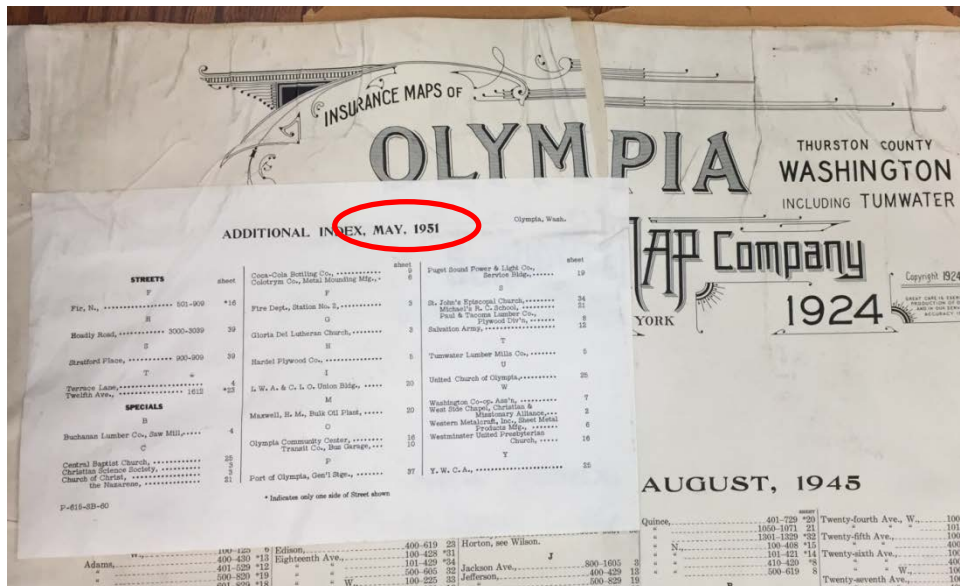


Figure 6: Index page for 1951 update to 1924 Sanborn Fire Insurance Map (see Fig. 5).

1930-31 Photo



Avalon Theatre, Home of the Pick of the Pictures

Figure 7: The Avalon Theatre 2-3 years after construction. Building proposed for Register on left. Note continuous tilework along bulkheads and seemingly seamless stucco facade across both buildings. Source newspaper unknown, courtesy of the Washington State Archives.

Undated (early 1940s?) Photo



Figure 8: Historical photo showing earlier configuration of the storefronts for the building. Both C.R. Harris' and Christensen's stores are in operation. Courtesy of the Washington State Archives.

1946 Aerial Photo



Figure 9: This photo dates to 18 years after the building was reportedly constructed. Photo courtesy of the Washington State Archives, Port of Olympia Collection.

1956 Photo



Figure 10: Harris' paint store appears on the right-hand side of this photo. Windows along Franklin Street retain their original openings. Projecting corner sign still present. Photo courtesy of the Washington State Archives, Olympia Police Department Collection.

Undated (1960s?) Photo

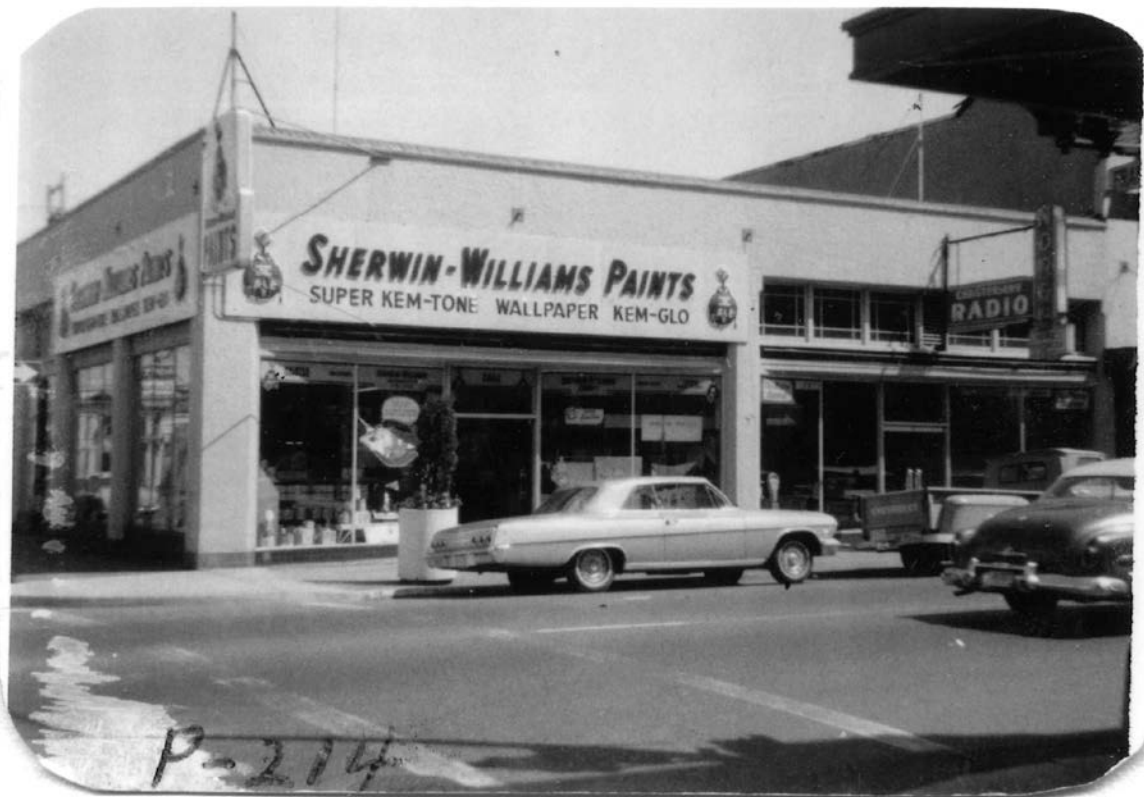



Figure 11: Photo from the early- to mid- 1960s showing modern storefront configuration along 4th Avenue and new Sherwin-Williams signage. Thurston County Assessor Photo, likely from ca. 1964, courtesy of the Washington State Archives.

1906 Advertisement

Prompt Attention
Given Night Calls

Business Phone Red 1341
Residence Phone Red 1191



Whiteside Undertaking Co.
Funeral Directors, Undertakers
and Embalmers

**FULL LINE OF UNDERTAKERS GOODS ALWAYS
ON HAND**

LADY EMBALMER IN ATTENDANCE

300 FOURTH STREET **OLYMPIA, WASH.**

Figure 12: Advertisement for early business which may have been in this location. From the Polk Directory for 1906.



1936 Advertisement

RADIOS

CHRISTENSEN'S RADIO SHOP

HENRY CHRISTENSEN

Philco, Atwater Kent, R. C. A. Victor
and Zenith Radios

Norge Refrigerators, Washers, Ironers, Ranges
Oil Burners and Heating Plants

304 East Fourth Avenue Telephone 1990 Olympia, Washington

Figure 13: Advertisement for Christensen's Radio Shop. From the Polk Directory for 1936.

C. R. HARRIS
Paint Headquarters

Wallpapers—Paints—Roofing Materials
Mirrors—Picture-Framing—Brushes

•

Labor by the Job or Hour
FREE ESTIMATES
Consult Us Before Building

•

We Can Save You Money
on Your Painting

•

Telephone 1844

300 4th Av. E. Olympia

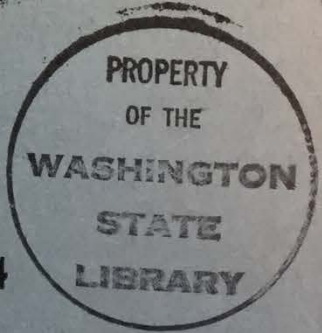


Figure 14: Advertisement for C.R. Harris Paint Headquarters from the Polk Directory for 1936.

WASHINGTON STATE LIBRARY
A60006 937924

C. R. HARRIS

Paint Headquarters

●

**SHERWIN-WILLIAMS PAINTS, LACQUERS,
VARNISHES**

●

ROOFING MATERIALS — MIRRORS

●

PICTURE-FRAMING — BRUSHES

●

IMPERIAL WASHABLE WALLPAPERS

●

**COLOR AND STYLE GUIDE
SERVICE**

●

You May Borrow Our
**SHERWIN-WILLIAMS
COLOR STYLE GUIDE**

●

**WE CAN HELP YOU
with
PAINTING SPECIFICATIONS**

●

TELEPHONE 6657

300 4th Av. E. **Olympia**

B

Figure 15: Advertisement for C.R. Harris Paint Headquarters, including reference to Sherwin-Williams products. Front the Polk Directory for 1941.

Current Photos



Figure 16: South Elevation with Former Avalon Theater on Right (June 29, 2016)



Figure 17: West & South Elevations (June 29, 2016)



Figure 18: West Elevation (June 29, 2016)



Figure 19: Storefront – West Elevation (June 29, 2016)



Figure 20: Storefront Detail – West Elevation (June 29, 2016)



Figure 21: Detail – South Elevation (June 29, 2016)



Figure 22: Interior – Southwest Corner (June 29, 2016)

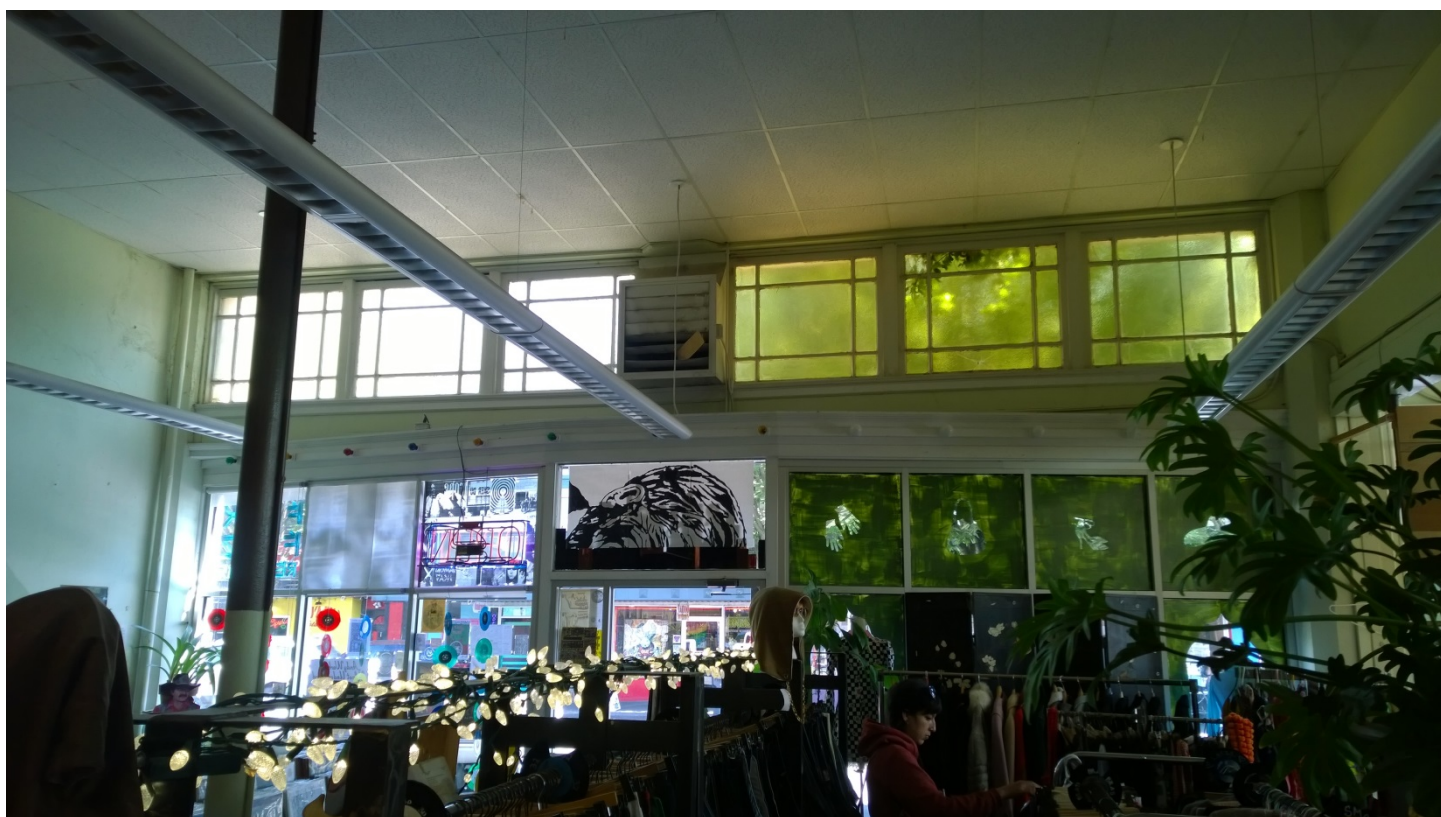


Figure 23: Interior – South Side Eastern Bays (June 29, 2016)

This information, collated by the City of Olympia's Historic Preservation Officer (Michelle Sadlier) in November 2016, supplements the research submitted by the applicants.