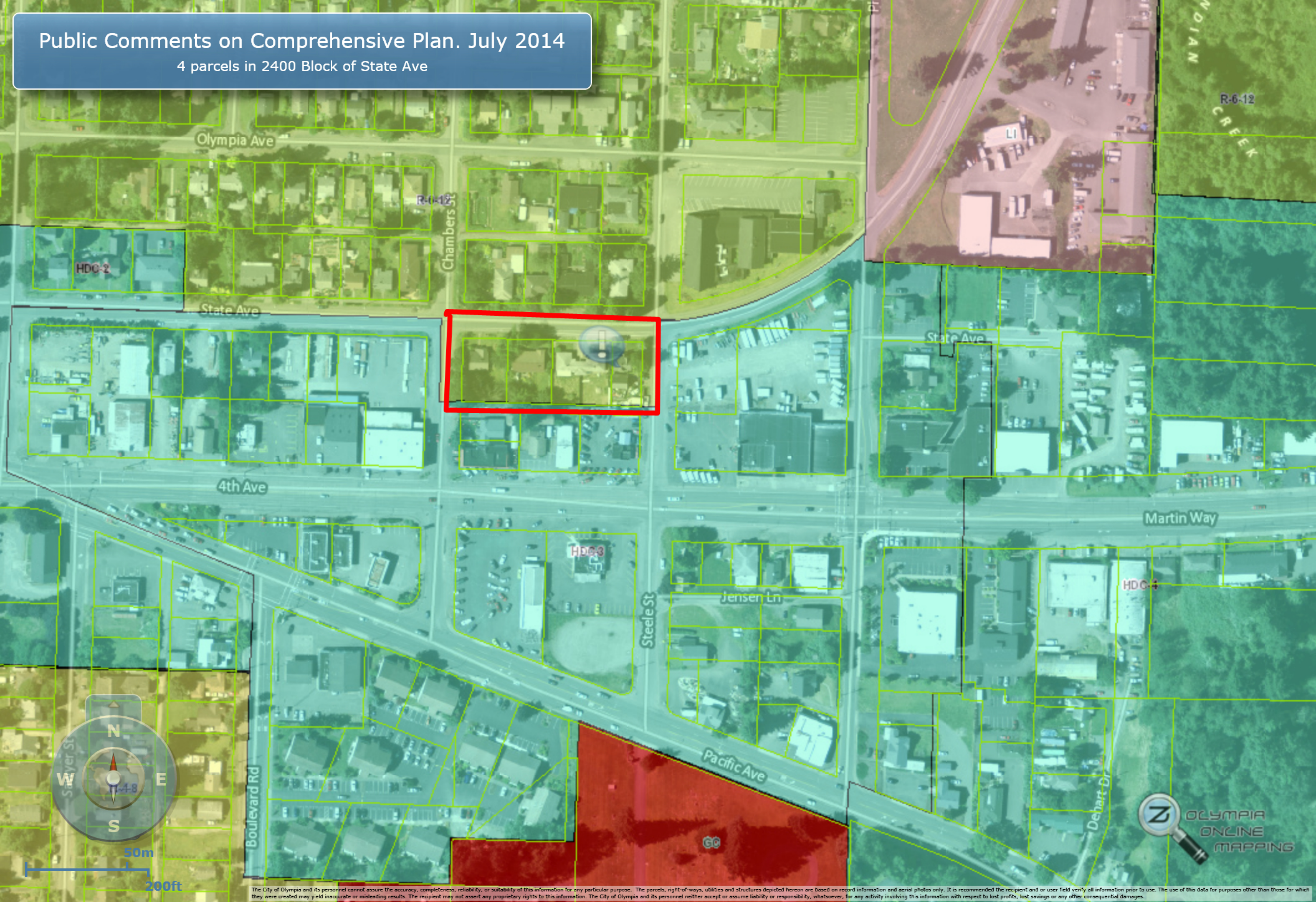


Public Comments on Comprehensive Plan. July 2014

4 parcels in 2400 Block of State Ave



Olympia Ave

R-6-12

Chambers St

HDC-2

State Ave

4th Ave

HDC-3

Steele St

Jensen Ln

Pacific Ave

State Ave

Martin Way

HDC-4

Boulevard Rd

Dehart Dr

OLYMPIA
CREEK

R-6-12



50m
200ft



The City of Olympia and its personnel cannot assure the accuracy, completeness, reliability, or suitability of this information for any particular purpose. The parcels, right-of-ways, utilities and structures depicted hereon are based on record information and aerial photos only. It is recommended the recipient and/or user field verify all information prior to use. The use of this data for purposes other than those for which they were created may yield inaccurate or misleading results. The recipient may not assert any proprietary rights to this information. The City of Olympia and its personnel neither accept or assume liability or responsibility, whatsoever, for any activity involving this information with respect to lost profits, lost savings or any other consequential damages.