



Imagine Olympia

Take Action



In 2014, The City of Olympia will adopt an updated Comprehensive Plan. The plan has goals and policies that reflect the community's 20-year vision for Olympia.

Early in the Imagine Olympia Comprehensive Plan Update process the City Council determined a vital next step. **Ensure the plan goals and policies become reality and have a real impact in the community.** A need for an "Action Plan" was realized.

The Action Plan is the next step in the Imagine Olympia process. This step provides an avenue to engage the community in a collaborative process and establishes critical performance measurements. It creates opportunities for the City and community members to work together to make a difference in Olympia.

Working Together | Alignment

The goals and policies in the Comprehensive Plan are the foundation for programs, projects, plans, and regulations the City pursues and adopts.

The Action Plan doesn't replace what the City is already doing. Instead, it aligns our current and future work efforts with the Comprehensive Plan and tracks our success.

Tracking Our Success

The Action Plan tracks our success and will establish...

- Desired outcomes for each action areas;
- Specific actions for implementing goals and policies;
- Short-term, mid-term, and long-term actions;



Moving from Visioning to Action

Working Together

Goal, Policies, Plans Work Together: For example the Capital Facilities Plan (CFP) is one element of the Comprehensive Plan. It guides how the City plans for the construction and maintenance of vital infrastructure, such as road, utilities, and parks.

- Potential and/or lead community partners; and
- Performance measurements.

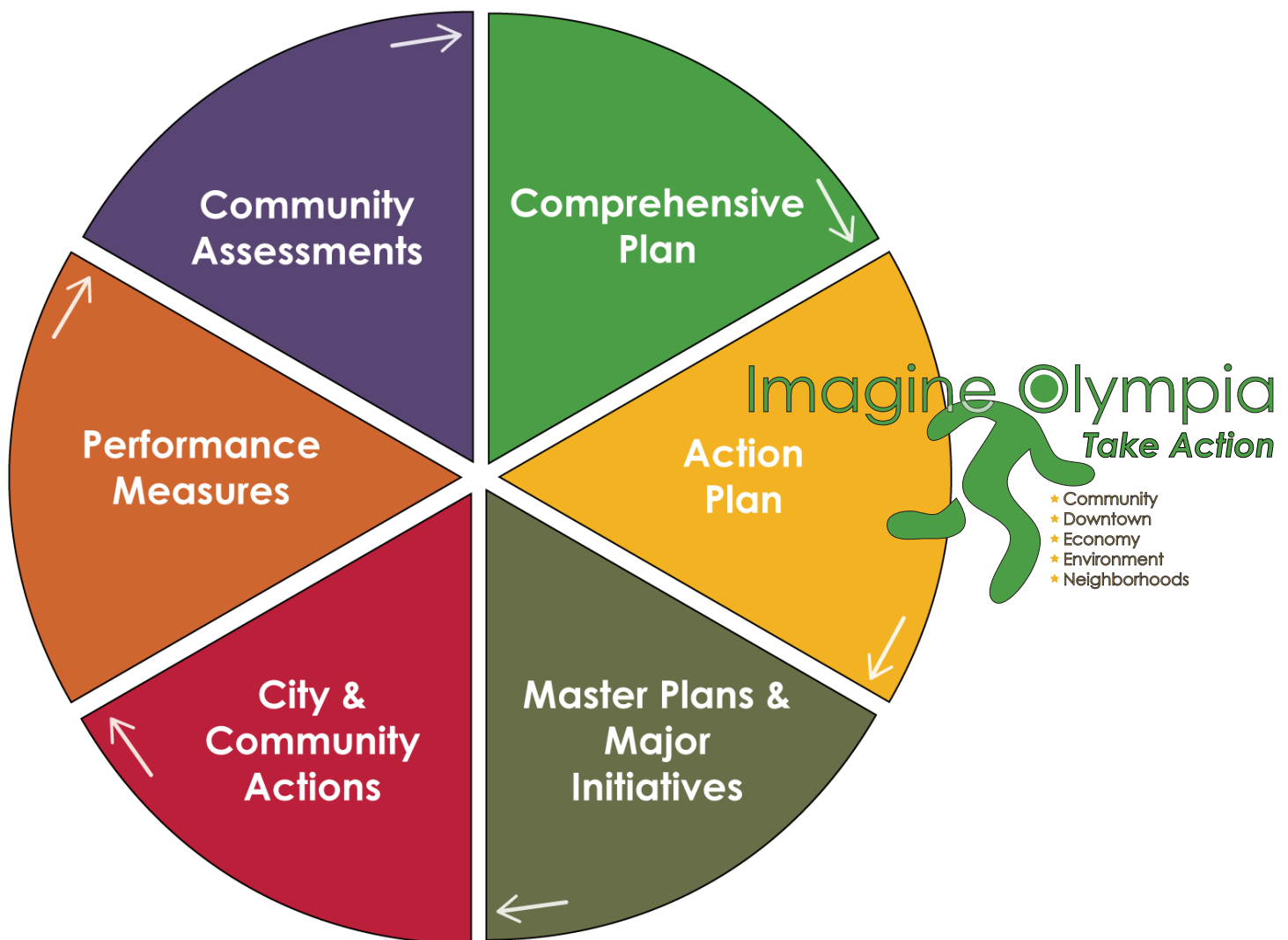
Designed to Meet Community Needs

The City Council goal is that the Action Plan is ...

- for everyone who lives, works and visits Olympia
- easy-to-use,
- updated as needed,
- an invitation to potential partners, and
- reflective of our community.

How Does the Action Plan Fit?

The Action Plan establishes a framework to accomplish the goals and policies of the Comprehensive Plan. Taking action is essential to accomplish the 20-year vision established by the community. **Only by working and taking action together can we make a difference.**



Contact Us

imagineolympia@ci.olympia.wa
imagineolympia.com