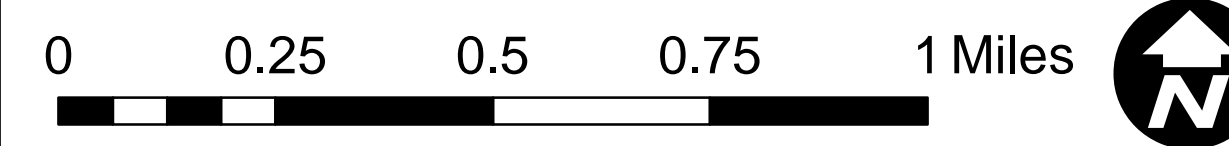


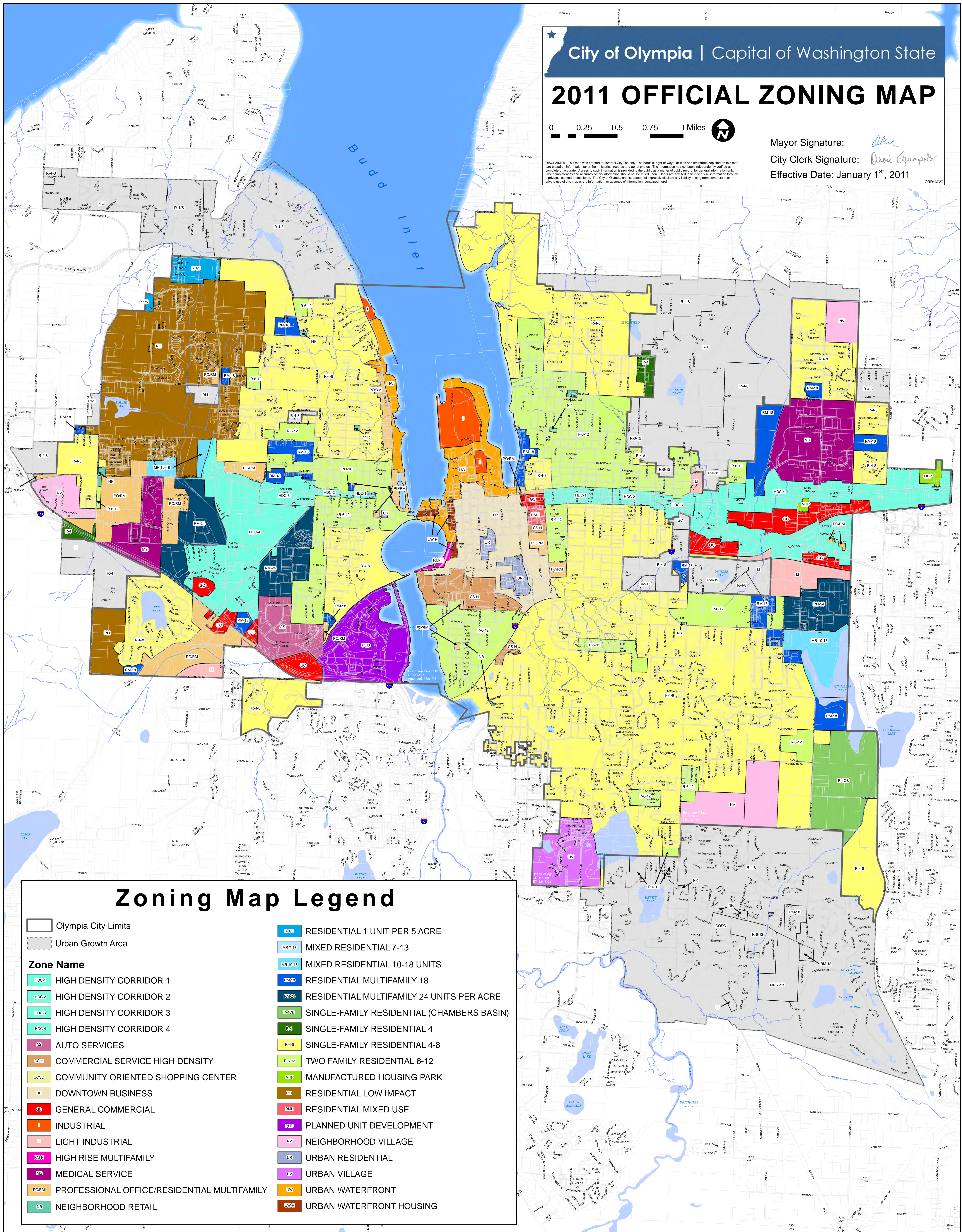
2011 OFFICIAL ZONING MAP



Mayor Signature: *Alan*
 City Clerk Signature: *Debbie Krumpal*
 Effective Date: January 1st, 2011

DISCLAIMER: This map was created for internal City use only. The parcels, right-of-ways, utilities and structures depicted on this map are based on information from historical records and aerial photos. The information has not been independently verified as complete or accurate. Access to such information is provided to the public as a matter of public record for general information only. The completeness and accuracy of this information should not be relied upon. Users are advised to verify all information through a private, licensed professional. The City of Olympia and its personnel expressly disclaim any liability arising from commercial or private use of this map or the information, contained herein.

ORD 6727



Zoning Map Legend

	Olympia City Limits		R-15 RESIDENTIAL 1 UNIT PER 5 ACRE
	Urban Growth Area		MR 7-13 MIXED RESIDENTIAL 7-13
Zone Name			MR 10-18 MIXED RESIDENTIAL 10-18 UNITS
	HDC-1 HIGH DENSITY CORRIDOR 1		RM-18 RESIDENTIAL MULTIFAMILY 18
	HDC-2 HIGH DENSITY CORRIDOR 2		RM-24 RESIDENTIAL MULTIFAMILY 24 UNITS PER ACRE
	HDC-3 HIGH DENSITY CORRIDOR 3		R-4CB SINGLE-FAMILY RESIDENTIAL (CHAMBERS BASIN)
	HDC-4 HIGH DENSITY CORRIDOR 4		R-4 SINGLE-FAMILY RESIDENTIAL 4
	AS AUTO SERVICES		R-4-8 SINGLE-FAMILY RESIDENTIAL 4-8
	CS-H COMMERCIAL SERVICE HIGH DENSITY		R-6-12 TWO FAMILY RESIDENTIAL 6-12
	COSC COMMUNITY ORIENTED SHOPPING CENTER		MHP MANUFACTURED HOUSING PARK
	DB DOWNTOWN BUSINESS		RLI RESIDENTIAL LOW IMPACT
	GS GENERAL COMMERCIAL		RMU RESIDENTIAL MIXED USE
	I INDUSTRIAL		PUD PLANNED UNIT DEVELOPMENT
	LI LIGHT INDUSTRIAL		NV NEIGHBORHOOD VILLAGE
	RM-18 HIGH RISE MULTIFAMILY		UR URBAN RESIDENTIAL
	MS MEDICAL SERVICE		UV URBAN VILLAGE
	PORM PROFESSIONAL OFFICE/RESIDENTIAL MULTIFAMILY		UW URBAN WATERFRONT
	NR NEIGHBORHOOD RETAIL		UW-H URBAN WATERFRONT HOUSING