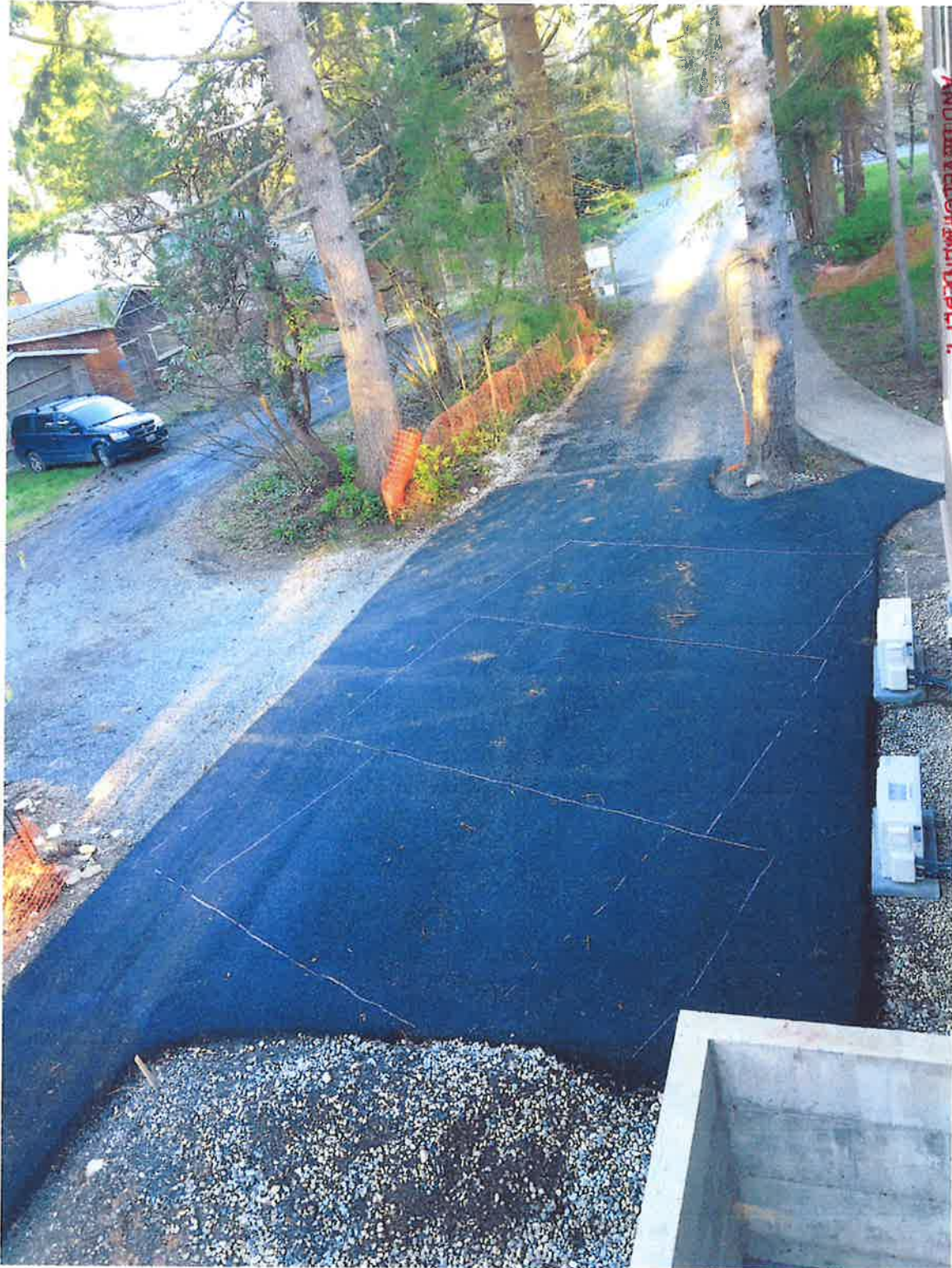


Proposed Parking Spaces behind Building D Woodard Lane Cohousing

CPD RECEIVED
5/11/16

The closest and farthest spaces are for compact cars, 8' wide X 16' long,
the middle space is for a regular vehicle, 9' wide X 17.5' long.



RECEIVED
MAY 11 2016
COMMUNITY PLANNING
AND DEVELOPMENT DEPT.

Parking Requested behind building D of Woodard Lane Cohousing (WLCH) – 3/28/2016



Picture from top of bike path at the west end



Down bike path toward wall in front of bike storage



Picture from narrow west end of Muirhead



From corner accessible to sidewalk, looking NW