

18.38.240 District design standards

In addition to the parking design standards for various zone districts found below, also refer to Design Review, Chapter [18.100](#).

A. Structured Parking Design Requirements:

1. Structured parking adjacent to designated pedestrian oriented streets on properties located outside of the Downtown Design District shall meet the Parking Structure Design Requirements in the Pedestrian Streets Overlay District Chapter Section 18.16.080(J).
2. For projects in the Downtown Design District, all above ground structured parking must meet the Above-Grade Structured Parking Requirements in Chapter 18.120.490.

~~A. URBAN WATERFRONT ZONE (UW):~~

- ~~1. Structured Parking Design Requirements. All structured parking must meet the Parking Structure Design Requirements in the Pedestrian Streets Overlay District Chapter, Section 18.16.080(J).~~

~~B. DOWNTOWN BUSINESS ZONE (DB):~~

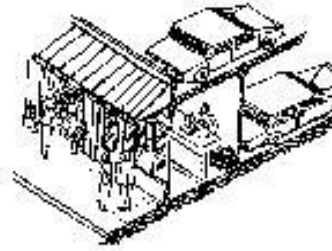
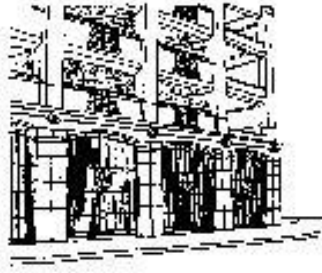
- ~~1. Structured Parking Design Requirements. All structured parking must meet the Parking Structure Design Requirements in the Pedestrian Streets Overlay District Chapter, Section 18.16.080(J).~~

~~C. RESIDENTIAL MIXED USE (RMU), RESIDENTIAL HIGH-RISE MULTIFAMILY (RMH) DISTRICT, URBAN RESIDENTIAL (UR):~~

- ~~1. Structured Parking Design Requirements. All structured parking must meet the Parking Structure Design Requirements in the Pedestrian Streets Overlay District Chapter, Section 18.16.080(J).~~

~~D. URBAN WATERFRONT HOUSING (UW-H):~~

- ~~1. Structured Parking Design Requirements. All structured parking must meet the Parking Structure Design Requirements in the Pedestrian Streets Overlay District Chapter, Section 18.16.080(J).~~



**Parking Garage facade treated with decorative grill work.
FIGURE 38-8**