



Basic Life Support Transport Availability and Response



**Prepared for Olympia City Council
May 24, 2022**

Presenters:
Assistant Chief Mike Buchanan
Assistant Chief Kevin Bossard

olympiawa.gov/Fire



When the 911 system is activated for a medical call, it is triaged one of two ways

- ALS or Advanced Life Support
 - Transport handled by Medic One assets

- BLS or Basic Life Support
 - Transport handled by private ambulance



The Problem

- Decreasing availability by private ambulance services
 - Increasing on-scene times

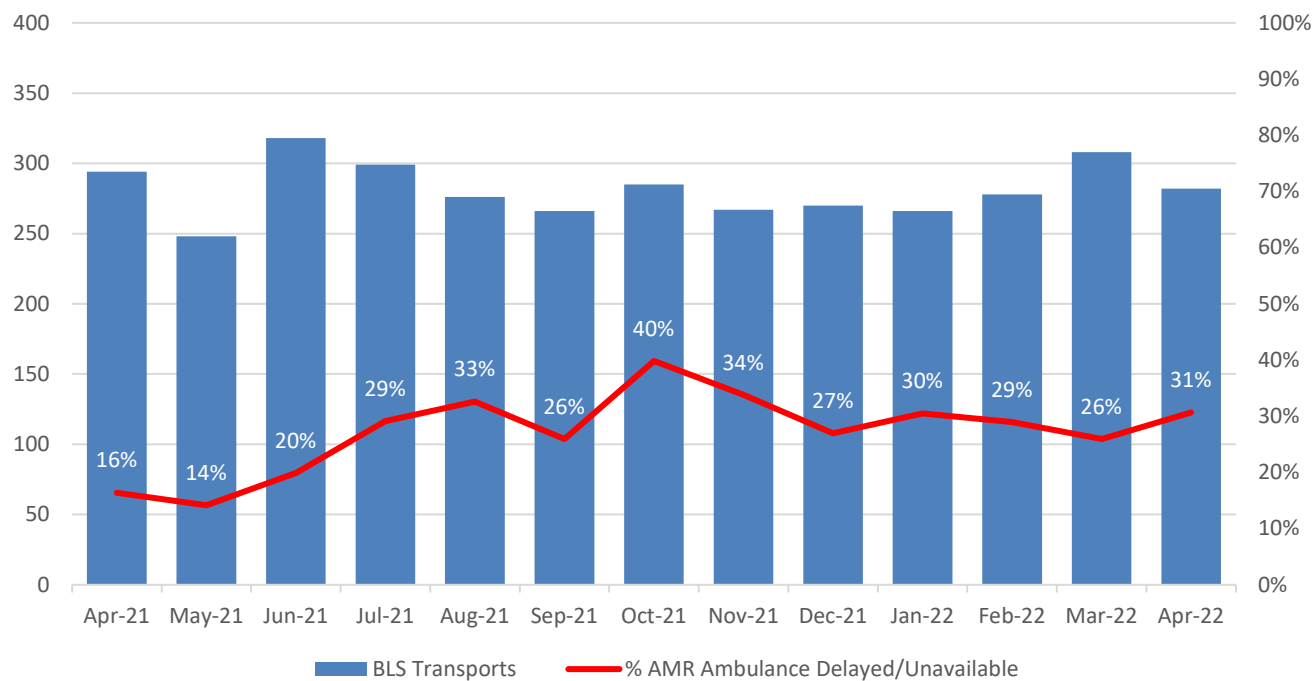
- Decreased availability to handle concurrent emergency calls
 - Increased response times

- This problem is compounded by increased call volume
 - Increased demand on emergency response system



Private Transport Unavailability

2021-2022 AMR Unavailable/Delayed for Transport

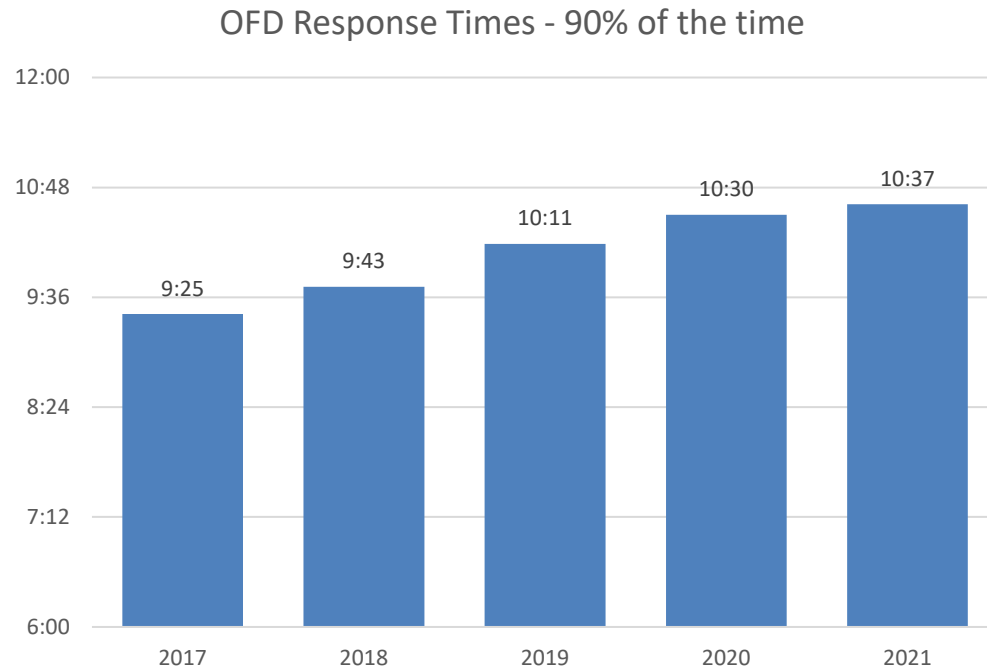


BLS Transports reflects a count of transports by AMR, Olympic, District 9, District 4. Percentage reflects transports where 'Type of Scene Delay' is indicated as Awaiting Ground Unit and Ground Unit Not Available



OFD Response Time Trends

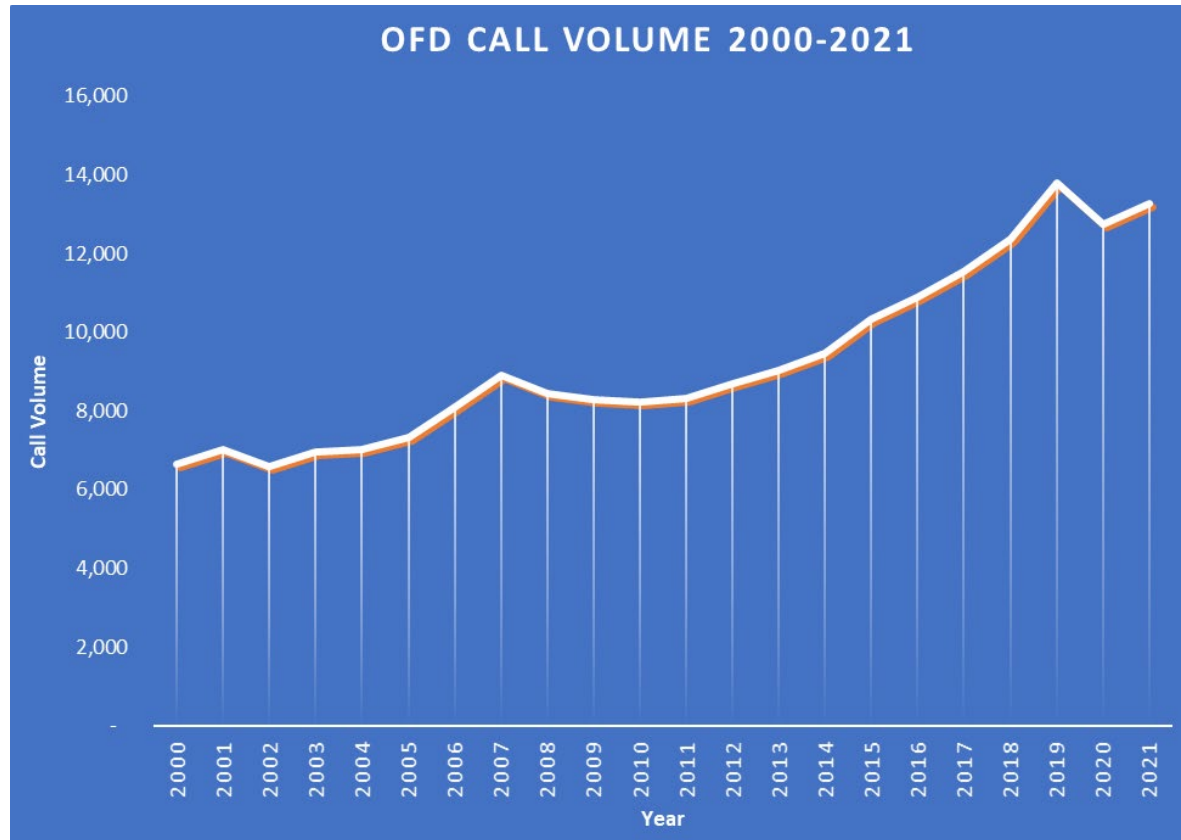
90% Response time graph 2017-2021



Response times in minutes and seconds from dispatch to arrival on scene. All apparatus and incident types.



OFD Call Volume Trends





Conclusion

- Private ambulance services are not meeting the demand
- Decreased ambulance availability results in increased response times to concurrent emergencies
- The combination of lack of private ambulance services and increased call volume is affecting our emergency response system



Thank You

Questions?

