

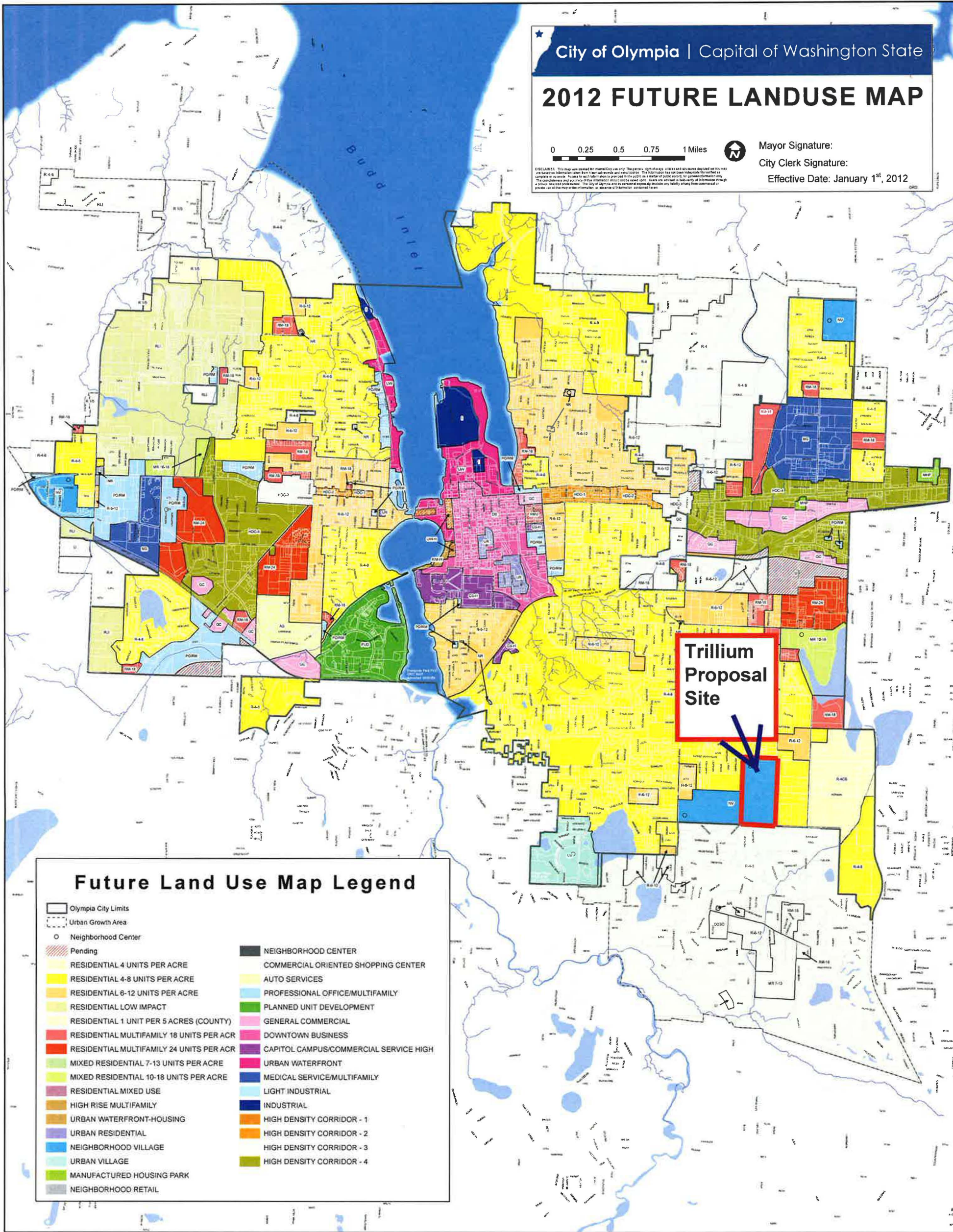
City of Olympia | Capital of Washington State

2012 FUTURE LANDUSE MAP

0 0.25 0.5 0.75 1 Miles

Mayor Signature: _____
 City Clerk Signature: _____
 Effective Date: January 1st, 2012

DISCLAIMER: This map was created for internal City use only. The general, spot-checks, updates and accuracy depicted on this map are based on information taken from official records and other sources. The information has not been independently verified as complete or accurate. It is not intended to be used as a basis for any legal action or as a basis for any other action. The City of Olympia and its personnel accept no liability arising from the use of this map or the information or data on which it is based.



Future Land Use Map Legend

Olympia City Limits	NEIGHBORHOOD CENTER
Urban Growth Area	COMMERCIAL ORIENTED SHOPPING CENTER
Neighborhood Center	AUTO SERVICES
Pending	PROFESSIONAL OFFICE/MULTIFAMILY
RESIDENTIAL 4 UNITS PER ACRE	PLANNED UNIT DEVELOPMENT
RESIDENTIAL 4-8 UNITS PER ACRE	GENERAL COMMERCIAL
RESIDENTIAL 6-12 UNITS PER ACRE	DOWNTOWN BUSINESS
RESIDENTIAL LOW IMPACT	CAPITOL CAMPUS/COMMERCIAL SERVICE HIGH
RESIDENTIAL 1 UNIT PER 5 ACRES (COUNTY)	URBAN WATERFRONT
RESIDENTIAL MULTIFAMILY 18 UNITS PER ACR	MEDICAL SERVICE/MULTIFAMILY
RESIDENTIAL MULTIFAMILY 24 UNITS PER ACR	LIGHT INDUSTRIAL
MIXED RESIDENTIAL 7-13 UNITS PER ACRE	INDUSTRIAL
MIXED RESIDENTIAL 10-18 UNITS PER ACRE	HIGH DENSITY CORRIDOR - 1
RESIDENTIAL MIXED USE	HIGH DENSITY CORRIDOR - 2
HIGH RISE MULTIFAMILY	HIGH DENSITY CORRIDOR - 3
URBAN WATERFRONT-HOUSING	HIGH DENSITY CORRIDOR - 4
URBAN RESIDENTIAL	
NEIGHBORHOOD VILLAGE	
URBAN VILLAGE	
MANUFACTURED HOUSING PARK	
NEIGHBORHOOD RETAIL	