

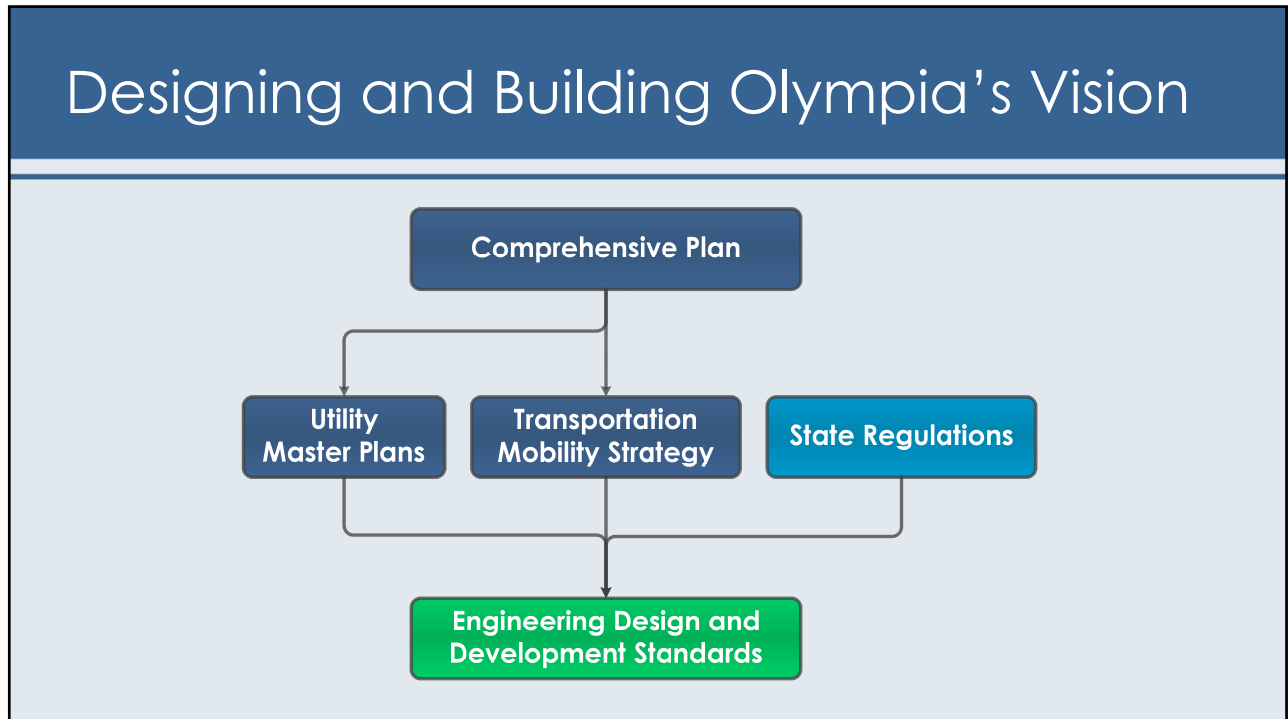
**Public Works Engineering**



 **Engineering Design and Development Standards 2021 Update**

Land Use and Environment Committee, February 18, 2021

1



2

# List of Topics

| 2021 EDDS Topics - as of February 3, 2021 |  |   |   |  |
|---|--|---|---|--|
| EDDS #                                    | Topic  | Requested Change and Why  | Location in EDDS, OMC, etc.                   | Submitted By                             |
| <b>SUBSTANTIVE CHANGES</b>                |  |   |   |  |
| 1   | Street Connectivity  | Implementing the Comp Plan (Goals G14 and G15, Policies PT5.1-4) in the EDDS; Transition from commercial to residential. Also consider (1) alternative alignments in environmentally sensitive/critical areas, (2) criteria for examining new street connections, and (3) identifying safety issues, unique physical features, and funding solutions. | 1.050, 2.040 B.3, Table 3 in Ch.4, 4H.060.A.8 | Ad hoc EDDS group                        |
| 2   | Downtown Sidewalk Standards  | Review and possible adjust the width of sidewalk in various downtown districts (e.g. 16' for arterials downtown?); clarify use thereof, such as for sidewalk cafes. Include tie to "A and B" classification streets in the Downtown Area, per Chapter 18.16 OMC. See also 18.100 OMC.   | Chapter 47, OMC 9.16.180                      | Ad hoc EDDS group                        |
| 3   | Frontage Improvement Thresholds  | Look at scale and proportionality; relationship to Comp Plan Policy PT15.1.   | 2.020, 2.040, 2.070, 3.110                    | Ad hoc EDDS group                        |
| 4   | Private Streets in Mobile Home Parks                                   | Look at internal circulation vs. required through street; establish standards.  | Chapter 27                                    | Ad hoc EDDS group                        |
| <b>OTHER CHANGES</b>                      |  |   |   |  |
| 5   | Remove Basis of Bearing Reference to City of Olympia Coordinate System | Edit or remove these references in various Chapters in the OMC that relate to Short Plats, etc.   | Ch.2, various chapters in Titles 17 & 18 OMC  | Kris Horton                              |
| 6   | Definitions  | Clarify some Definitions.   | 2.020   | Diane Utter                              |
| 7   | Submittals for Private Development Work                                | Consider requiring submittals for certain types of construction (e.g. pervious concrete sidewalk and driveways) and/or materials to be used, for work on public facilities and infrastructure constructed by private development. Address Traffic Control Plan submittals here as well.   | Chapter 3                                     | Fran Eide, Steve Sperr and Andrew Beagle |
| 8   | Development Engineer   | Remove references to a Development Engineer, which is no longer a position at the City.   | Chapter 3                                     | Steve Sperr                              |
| 9   | Electronic PE seals  | Insert standards for electronic sealing and signing of plans by professional engineers, land surveyors, and other licensed professionals.   | Chapter 3                                     | Tim Richardson, Kris Horton              |
| 10  | Topo Information Reference   | Add requirements to cite topographical information if used on plans.  | Chapter 3                                     | Kris Horton                              |
| 11  | Record Drawings (As-Built)   | Update requirements for submittal of Record Drawings to City.   | Chapter 3                                     | Kris Horton                              |
| 12  | Autocad and GIS Files Formatting                                       | Update requirements for submittal of Record Drawings to City.   | Chapter 3                                     | Steve Sperr, Aurora Isabel               |
| 13  | Update List of References  | Update the list of referenced documents related to the water system, and add current links  | Chapter 3                                     | Aurora Isabel                            |
| 14  | GNET Software  | Update the GNET software notes on the Construction Plan Notes standard drawing (3-1) to highlight the updated software requirement added in 2018.   | 3.010   | Steve Sperr                              |
| 15  | LID Details  | Update reference numbers for Chapter 5 LID detail drawings on Standard Street Drawings.   | Drawing 3-1                                   | Steve Sperr                              |
| 16  | Maple Park Drive   | 1. Change street classification to Neighborhood Collector, and 2. Clarify street light standards for this street.   | Chapters 4 and 5                              | Joyce Phillips                           |
| 17  | Ladder Bar Crosswalks  | 1. Change street classification to Neighborhood Collector, and 2. Clarify street light standards for this street.   | Chapter 4                                     | Kevin Krall, Steve Sperr                 |
| 18  | Concrete Strength for Driveway   | 1. Change street classification to Neighborhood Collector, and 2. Clarify street light standards for this street.   | 4B.130, Drawings 4-32, 32A                    | Rolland Ireland                          |

3

## Substantive Changes

- Street Connectivity
- Downtown Sidewalk Standards
- Thresholds for Frontage Improvements
- Private Streets in Mobile Home Parks

4

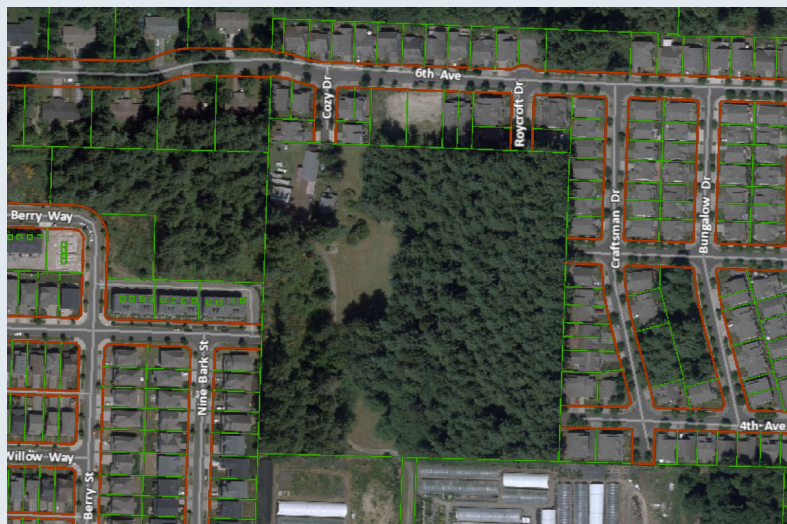
# Street Connectivity

GT4 – The street network is a well-connected system of small blocks, allowing short, direct trips for pedestrians, bicyclists, transit users, motorists, and service vehicles.

GT5 - Street connections to existing residential areas and in environmentally sensitive areas will be carefully examined before a decision is made to create a connection for motor vehicle traffic.

5

# Connectivity



6

## Downtown Sidewalk Standards

- Main objective is to achieve greater sidewalk widths on the larger streets (e.g. Arterials)
- May address Non-Motorized Use Only weekend and other street closures as well
- Consistent with Downtown Strategy



7

## Frontage Improvements

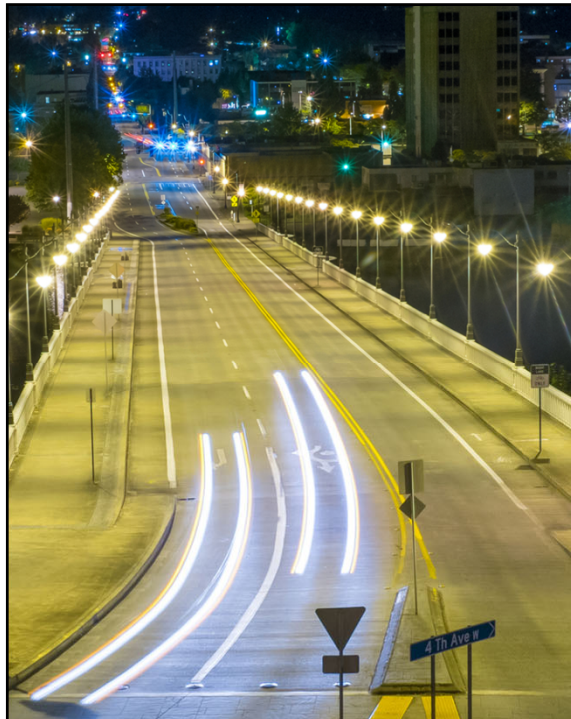
- Major barrier to Redevelopment (“nexus of proportionality”)
- Impact to Downtown Area
- Examples include:
  - Sidewalks and planter strips
  - Driveways
  - Undergrounding of Private Utilities
  - Public utility extensions

8

# Private Streets in Mobile Home Parks

Internal Circulation vs. Required Through Street(s)

9



## Next Steps

Feb. – June Work on Topics and Engage Stakeholders

June 17 Back to LUEC with Specifics

July 13 City Council Public Hearing

August Codify Changes

10