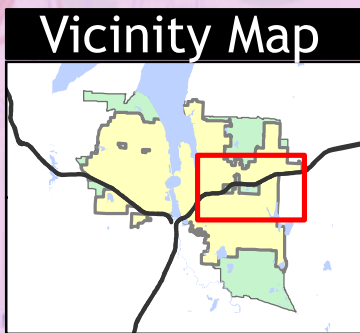
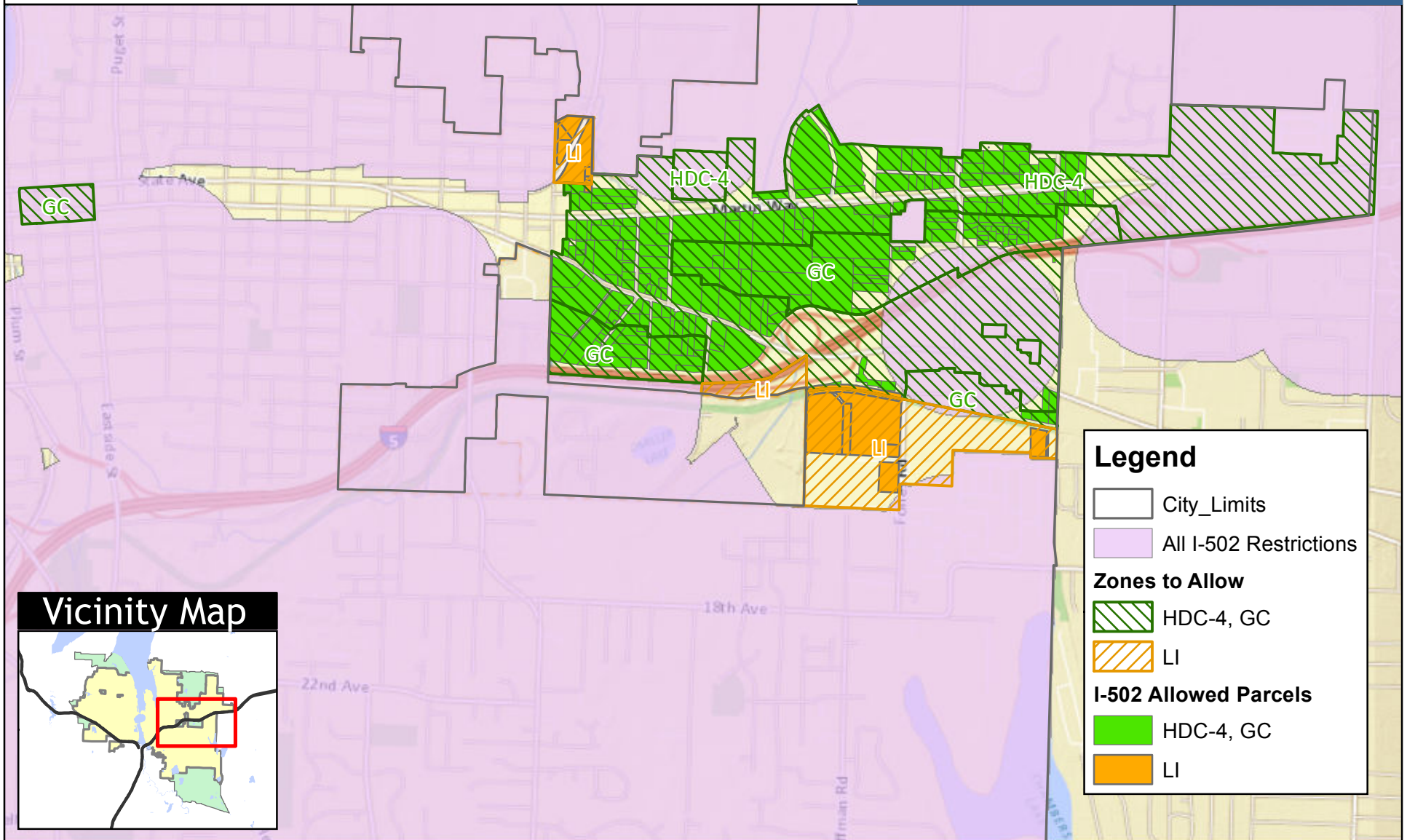


I-502 Zones Under Discussion - Detail A

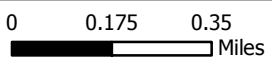
City Zones to Allow: HDC-4, GC, LI

City of Olympia | Capital of Washington State



Legend

- City_Limits
- All I-502 Restrictions
- Zones to Allow**
- HDC-4, GC
- LI
- I-502 Allowed Parcels**
- HDC-4, GC
- LI



Map created Oct 7, 2013
 For questions, please contact:
 Chris Grabowski, Code Enforcement Officer
 cgrabows@ci.olympia.wa.us
 (360) 753-8168

Derivation of Data:
 I-502 restrictions include both city zoning classified as residential, as well as a 1000 ft buffer around restricted parcels. These parcels include public and private schools, recreation facilities, licensed child care centers, public parks, the public transit center, the library, and game arcades, as of Sept 9, 2013.
 Parcels allowed under I-502 restrictions must be wholly outside of the 1000' buffer region.

The City of Olympia and its personnel cannot assure the accuracy, completeness, reliability, or suitability of this information for any particular purpose. The parcels, right-of-ways, utilities and structures depicted hereon are based on record information and aerial photos only. It is recommended the recipient and/or user field verify all information prior to use. The use of this data for purposes other than those for which they were created may yield inaccurate or misleading results. The recipient may not assert any proprietary rights to this information. The City of Olympia and its personnel neither accept or assume liability or responsibility, whatsoever, for any activity involving this information with respect to lost profits, lost savings or any other consequential damages.

