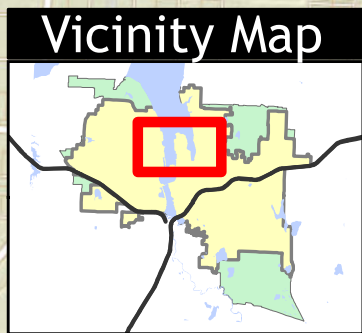
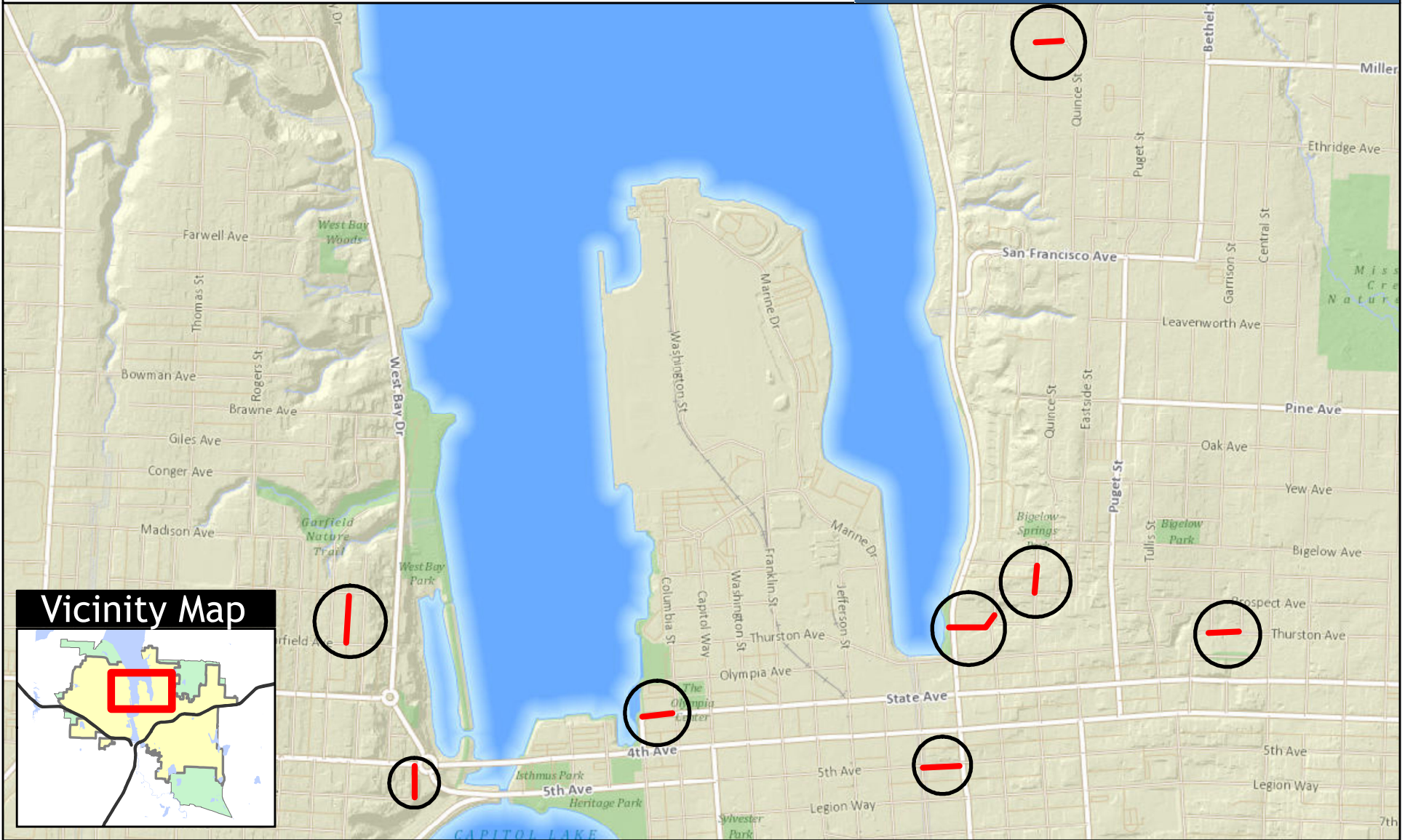


2024 Cure in Place Pipe Lining Project

City of Olympia | Capital of Washington State



0 625 1,250
Feet

1 inch = 1,250 feet

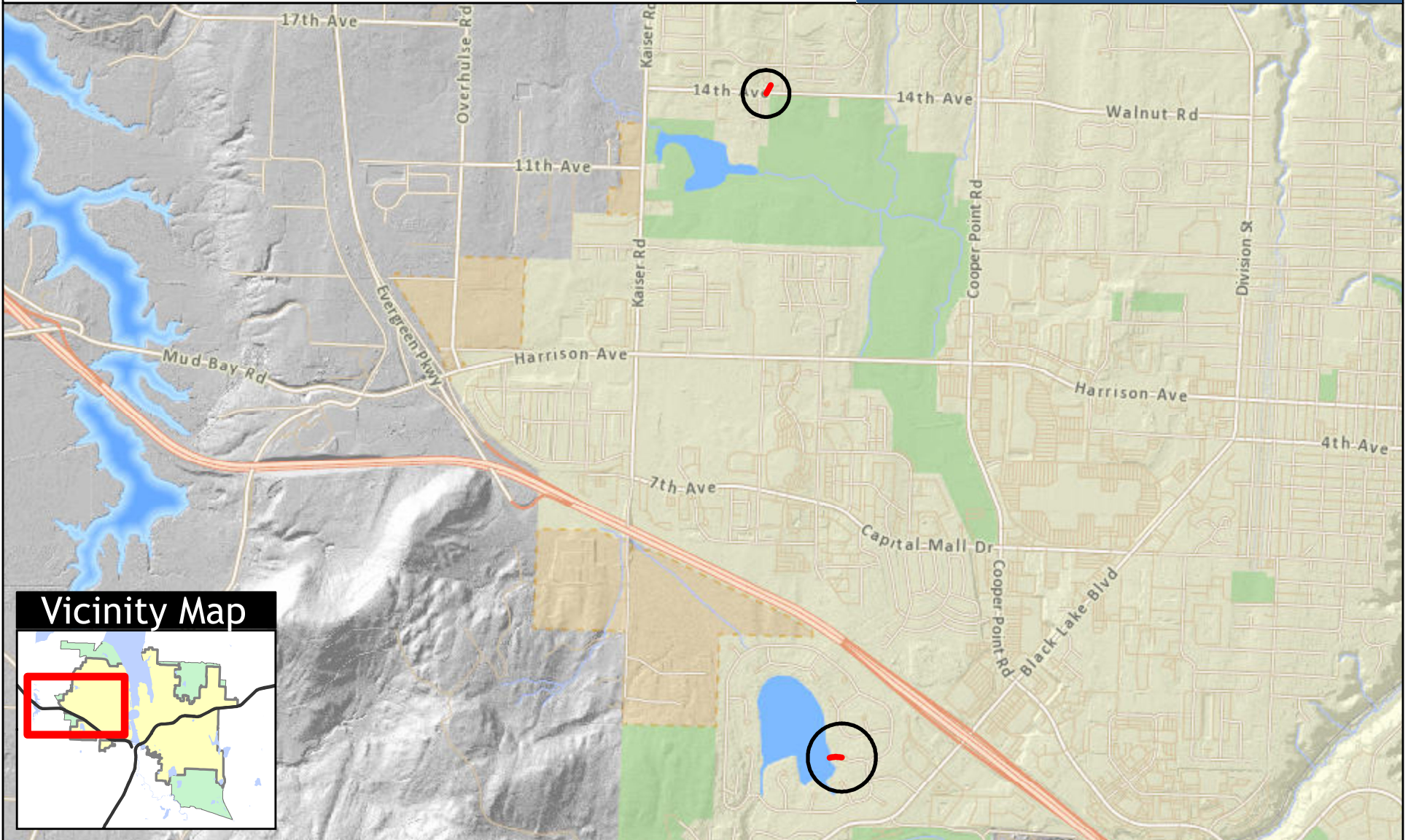


Map created: May 31, 2024
For more information, please contact:
Jon Calcara (319)423-0180
jcalcara@ci.olympia.wa.us

The City of Olympia and its personnel cannot assure the accuracy, completeness, reliability, or suitability of this information for any particular purpose. The parcels, right-of-ways, utilities and structures depicted hereon are based on record information and aerial photos only. It is recommended the recipient and/or user field verify all information prior to use. The use of this data for purposes other than those for which they were created may yield inaccurate or misleading results. The recipient may not assert any proprietary rights to this information. The City of Olympia and its personnel neither accept or assume liability or responsibility, whatsoever, for any activity involving this information with respect to lost profits, lost savings or any other consequential damages.

2024 Cure in Place Pipe Lining Project

City of Olympia | Capital of Washington State



0 1,000 2,000
Feet

1 inch = 2,000 feet

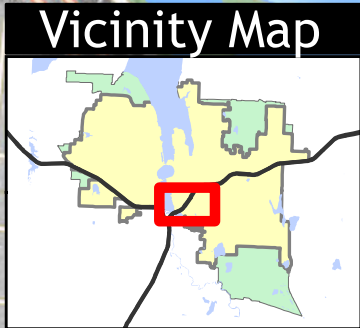
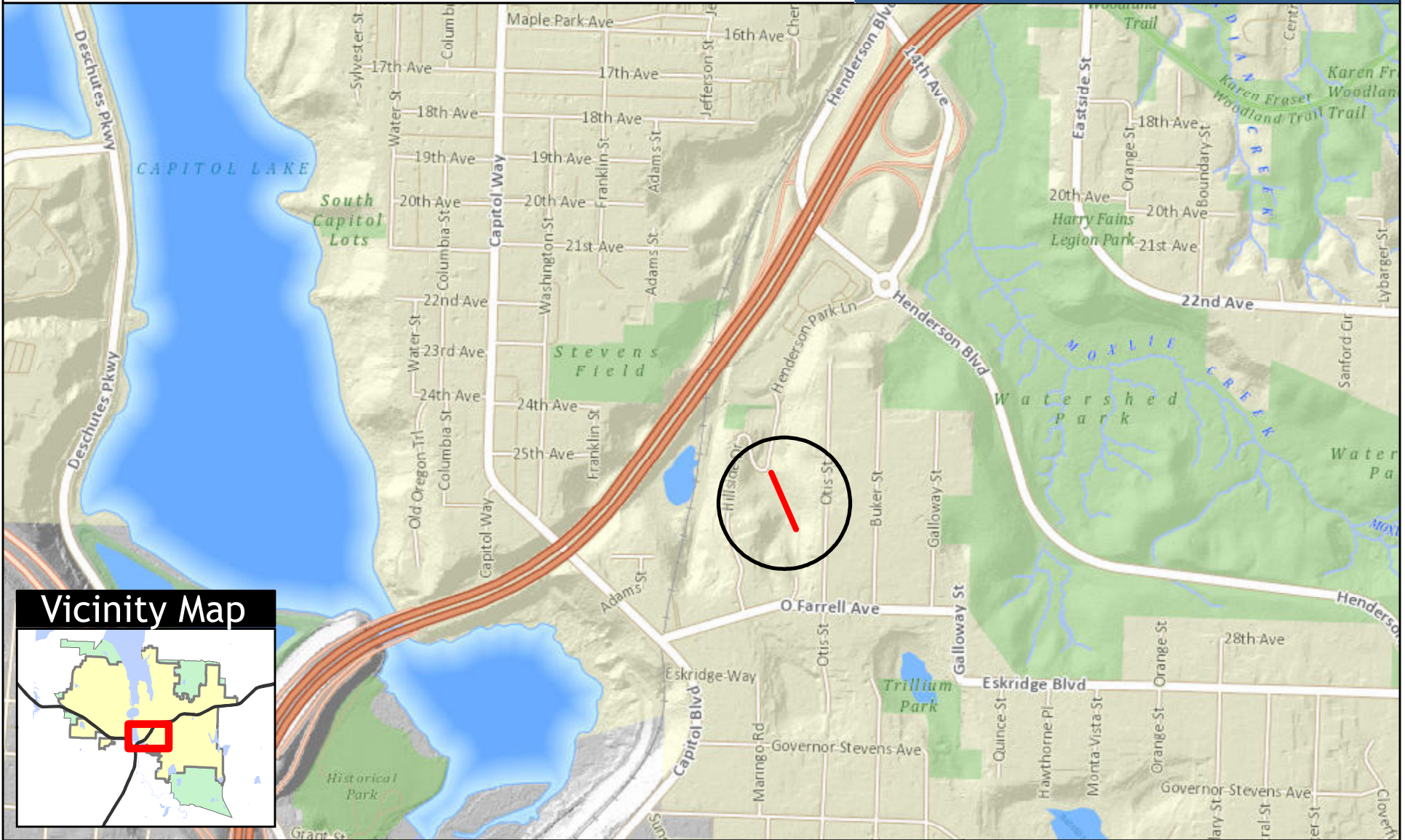
Map created: May 31, 2024
For more information, please contact:
Jon Calcara (319)423-0180
jcalcara@ci.olympia.wa.us



The City of Olympia and its personnel cannot assure the accuracy, completeness, reliability, or suitability of this information for any particular purpose. The parcels, right-of-ways, utilities and structures depicted hereon are based on record information and aerial photos only. It is recommended the recipient and or user field verify all information prior to use. The use of this data for purposes other than those for which they were created may yield inaccurate or misleading results. The recipient may not assert any proprietary rights to this information. The City of Olympia and its personnel neither accept or assume liability or responsibility, whatsoever, for any activity involving this information with respect to lost profits, lost savings or any other consequential damages.

2024 Cure in Place Pipe Lining Project

City of Olympia | Capital of Washington State



0 425 850
Feet

1 inch = 833 feet

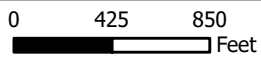
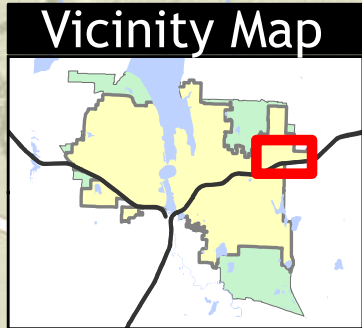
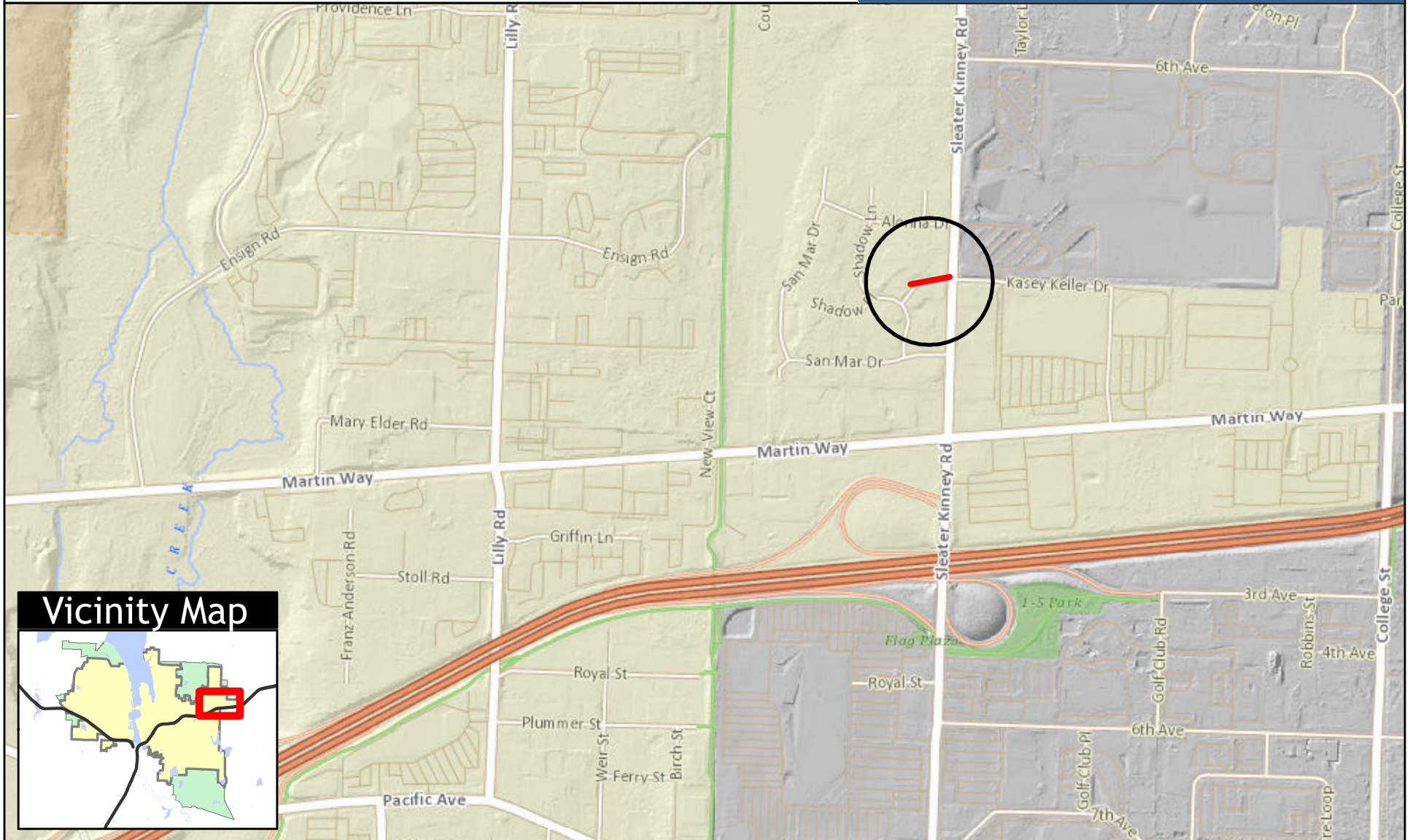


Map created: May 31, 2024
For more information, please contact:
Jon Calcara (319)423-0180
jcalcara@ci.olympia.wa.us

The City of Olympia and its personnel cannot assure the accuracy, completeness, reliability, or suitability of this information for any particular purpose. The parcels, right-of-ways, utilities and structures depicted hereon are based on record information and aerial photos only. It is recommended the recipient and or user field verify all information prior to use. The use of this data for purposes other than those for which they were created may yield inaccurate or misleading results. The recipient may not assert any proprietary rights to this information. The City of Olympia and its personnel neither accept or assume liability or responsibility, whatsoever, for any activity involving this information with respect to lost profits, lost savings or any other consequential damages.

2024 Cure in Place Pipe Lining Project

City of Olympia | Capital of Washington State



1 inch = 833 feet

Map created: May 31, 2024
For more information, please contact:
Jon Calcara (319)423-0180
jcalcara@ci.olympia.wa.us



The City of Olympia and its personnel cannot assure the accuracy, completeness, reliability, or suitability of this information for any particular purpose. The parcels, right-of-ways, utilities and structures depicted hereon are based on record information and aerial photos only. It is recommended the recipient and/or user field verify all information prior to use. The use of this data for purposes other than those for which they were created may yield inaccurate or misleading results. The recipient may not assert any proprietary rights to this information. The City of Olympia and its personnel neither accept or assume liability or responsibility, whatsoever, for any activity involving this information with respect to lost profits, lost savings or any other consequential damages.