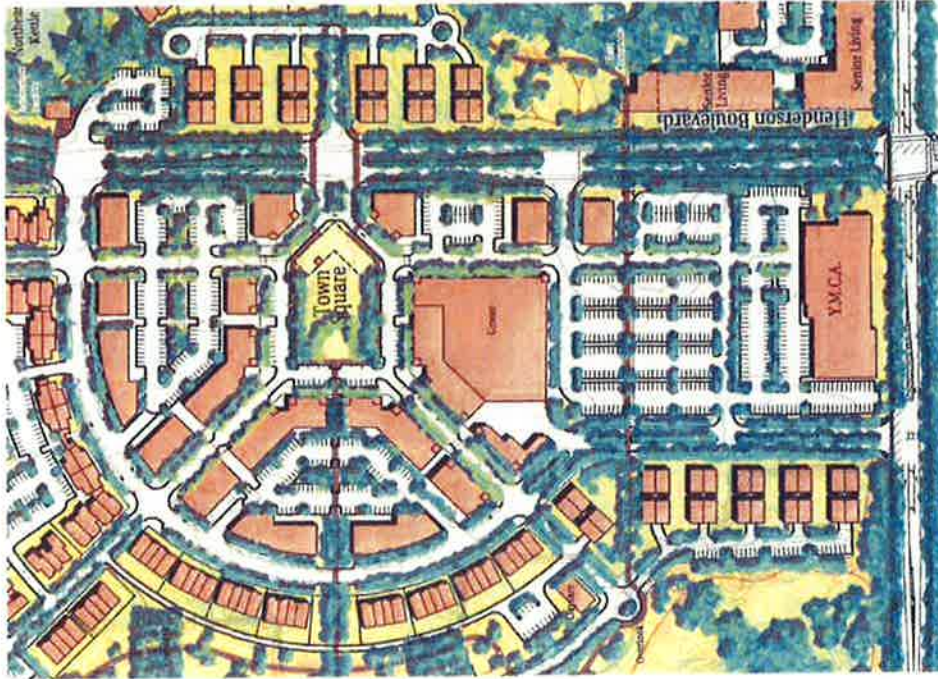


New Amended Site Plan

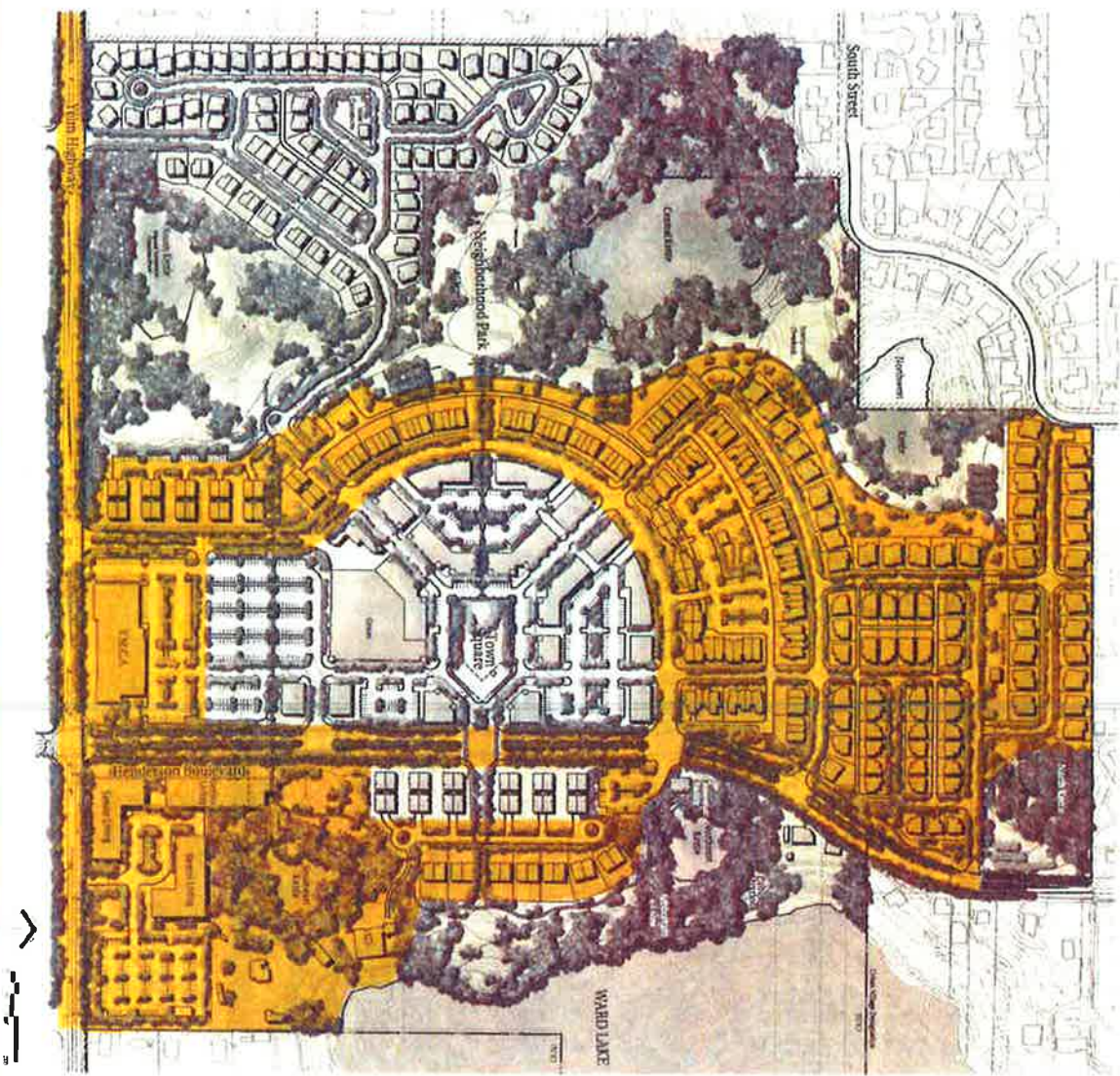


Original Site Plan

Briggs Village Master Plan Amendment

Town Center – Original and New Site Plan

KEY  
NO CHANGE



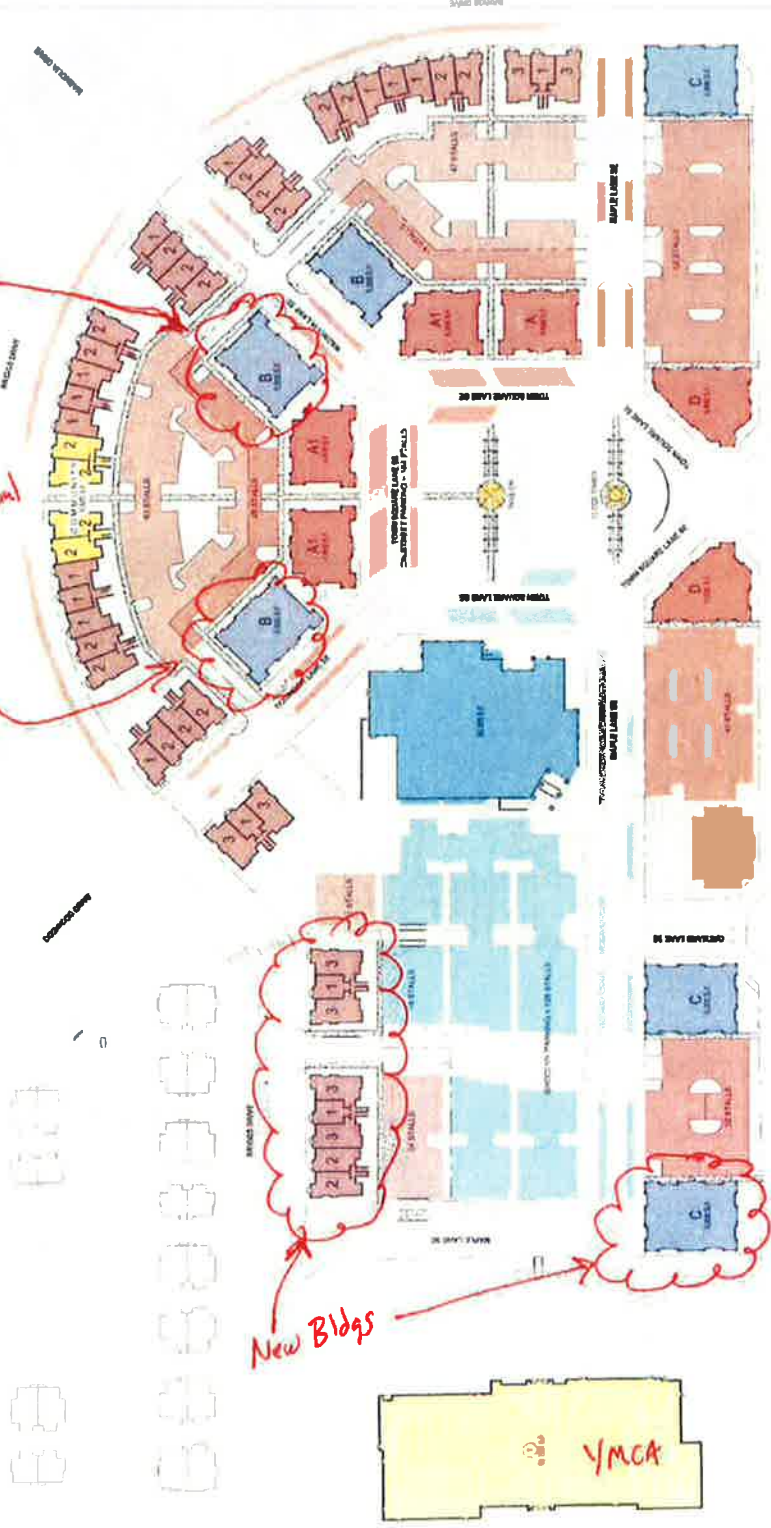
Original Site Plan – Area of No Change

Briggs Village Master Plan Amendment

Attachment #1  
Pg 2

Mixed Use Bldg  
Residential  
over Commercial

New Bldgs



**AREA TOTALS**

COMM/RESID	32,770 SF
COMMUNITY	5,200 SF
OFFICE	30,390 SF
COMM/RESID OFFICE	51,000 SF

ON-STREET PARKING - 40 STALLS  
 OFF-STREET PARKING - 161 STALLS  
 TOTAL - 201 STALLS



SITE PLAN  
 N 1/4

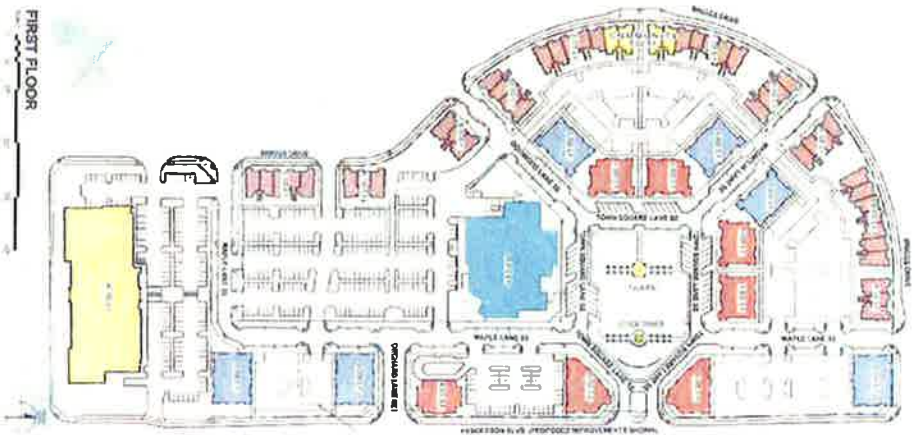
Briggs Village Town Center

Master Plan Amendment

**BRIGGS VILLAGE MIXED USE DISTRICT PLAN**

**AREA TOTALS**

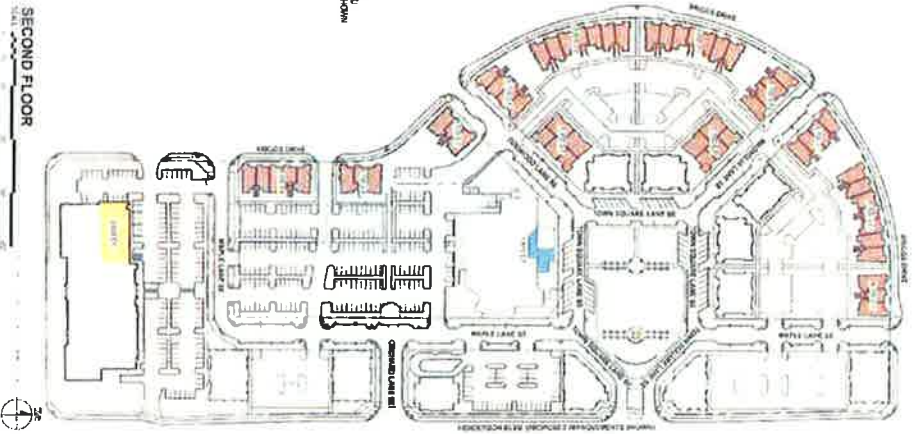
COMMUNITY	44,000 SF	COMM/RETAIL	37,770 SF	OFF STREET PARKING - 42 STALLS
GROcery	20,300 SF	RESIDENTIAL	34,800 SF	TOTAL
COMM/RETAIL/GARAGE	21,000 SF	COMM/RETAIL/GARAGE	21,000 SF	RESIDENTIAL - 42 STALLS
				TOTAL



**FIRST FLOOR AREA TOTALS**

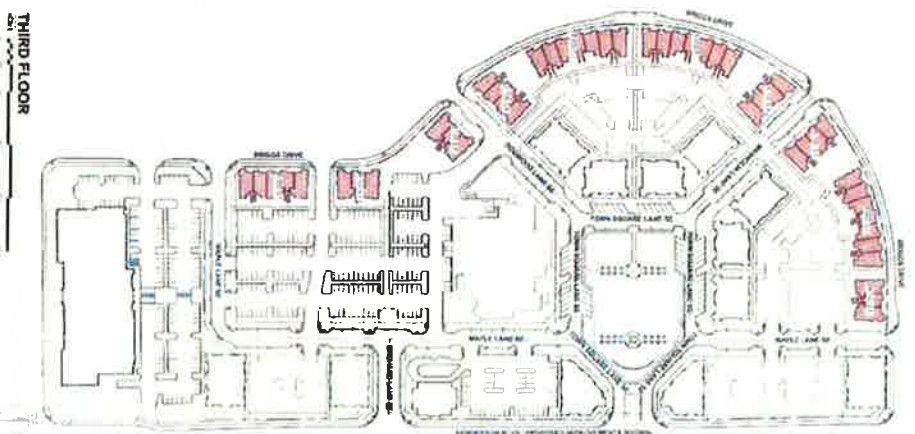
COMMUNITY	24,200 SF	COMM/RETAIL	20,700 SF
GROcery	20,300 SF	RESIDENTIAL	51,700 SF
COMM/RETAIL/GARAGE	21,000 SF	COMM/RETAIL/GARAGE	21,000 SF

4,750 SQ FT 10,000 SF IN L&L  
OR 17,000 SF BUILDING ROOM



**SECOND FLOOR AREA TOTALS**

COMMUNITY	1,000 SF	COMM/RETAIL	0 SF
GROcery	1,950 SF	RESIDENTIAL	71,000 SF
COMM/RETAIL/GARAGE	0 SF	COMM/RETAIL/GARAGE	0 SF



**THIRD FLOOR AREA TOTALS**

COMMUNITY	0 SF	COMM/RETAIL	0 SF
GROcery	0 SF	RESIDENTIAL	59,800 SF
COMM/RETAIL/GARAGE	0 SF	COMM/RETAIL/GARAGE	0 SF

Master Plan Amendment – Area Distribution - Minimum

Briggs Village Town Center

Attachment #1  
p 94



Briggs Village Town Center

Aerial View from Northeast

