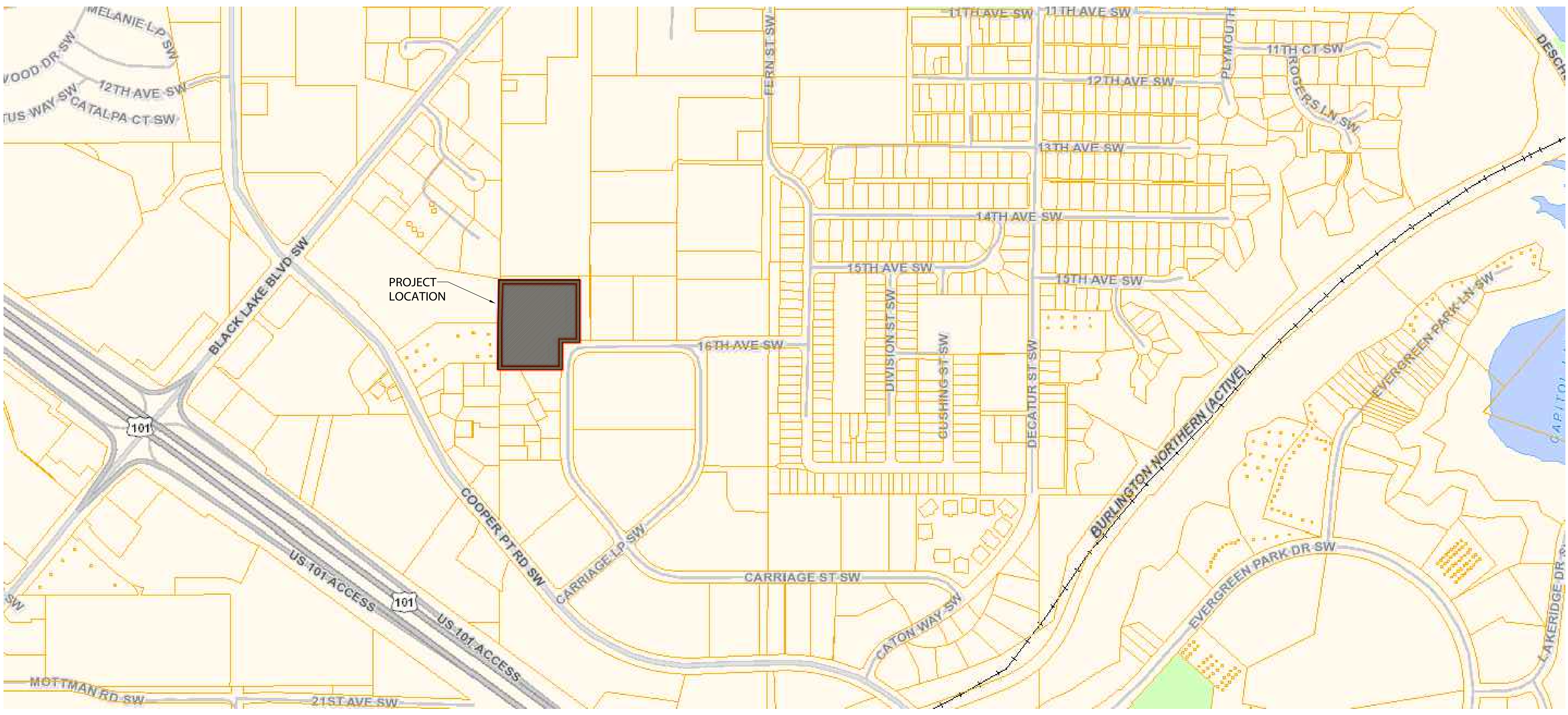


PRELIMINARY
NOT FOR
CONSTRUCTION

© AXIS DESIGN GROUP
THESE DRAWINGS ARE THE PROPERTY OF AXIS
DESIGN GROUP AND ARE NOT TO BE REPRODUCED
IN ANY MANNER EXCEPT WITH THE PRIOR WRITTEN
APPROVAL OF AXIS DESIGN GROUP.



VICINITY MAP
SCALE: NTS

SITE REDEVELOPMENT
2420 CARRIAGE LOOP SW
OLYMPIA, WA

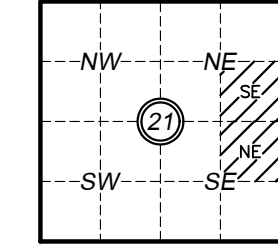
REVISIONS		
No.	Description	Date

DRAWN BY: DF
 CHECKED BY: KJK
 JOB NO: 24-007
 DATE: 05/03/2024
 ISSUED FOR: REVIEW
 SHEET TITLE
 VICINITY MAP
 SHEET NO.

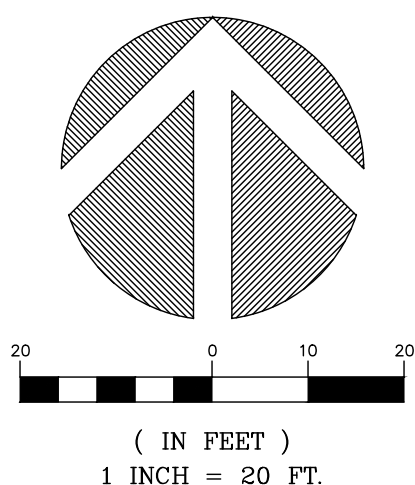
S:\Projects\2024_Projects\24-007 - GEE - Project Water Olympia\Drawings\24-007 - Project Water - Vicinity Map.dwg © Plot Date: May 2, 2024 @ Time: 3:09 PM

ALTA/NSPS LAND TITLE SURVEY

SECTION INDEX:
THURSTON COUNTY, WA
SE 1/4 OF THE NE 1/4 AND
NE 1/4 OF THE SE 1/4 OF
S. 21, T. 18N, R. 2E, W.M.



LEGEND			
	AREA DRAIN		STORM MANHOLE
	ASPHALT SURFACE		STORM DRAIN LINE
	BRASS DISC (FOUND)		SUBDIVISION LINES
	BUILDING		TREE (AS NOTED)
	BOLLARD		WATER VALVE
	CENTERLINE ROW		WATER LINE
	CLEANOUT		WATER METER
	CULVERT PIPE		YARD LIGHT
	CONCRETE SURFACE		AIR CONDITION UNIT
	DITCH (FLOWLINE)		AUDITOR'S FILE
	DISABLED PARKING SPACE		BLDG
	FENCE LINE (CHAIN LINK)		C.C.
	FENCE LINE (WOOD)		CALC'D
	FIRE HYDRANT		CB
	GAS LINE		COL
	GAS METER		CONC
	GAS VALVE		COR
	GRAVEL SURFACE		CRW
	INLET (TYPE 1)		DEC
	LUMINAIRE		ELEV
	MAILBOX (RESIDENTIAL)		EVG
	NAIL AS NOTED		FF
	PARKING SPACES		G
	POST		HX
	PROPERTY LINES (ADJACENT)		LS#
	POWER HAND HOLE		MEAS
	POWER METER		MON
	POWER (UNDERGROUND)		PROP
	FLAG POLE		PVC
	POWER SENTRY		SD
	POWER TRANSFORMER		SSMH
	REBAR & CAP (SET)		SSS
	REBAR AS NOTED (FOUND)		SF
	RIGHT-OF-WAY LINES		POWER & TELEPHONE EASEMENT PER VOL. 21, PG. 114
	ROCKERY		POWER & TELEPHONE EASEMENT PER VOL. 22, PG. 134
	SEWER MANHOLE		UTILITY EASEMENT PER VOL. 22, PG. 134
	SEWER LINE		WATER LINE EASEMENT REC. NO. 9510270091
	SIGN (AS NOTED)		SEWER LINE EASEMENT REC. NO. 3131476



We are the measure | terrane.net

ALTA/NSPS LAND TITLE SURVEY
TAX PARCEL NO. 66610000600 & 66620001100

GEE AUTOMOTIVE COMPANIES
2300 & 2420 CARRIAGE LOOP SOUTHWEST
OLYMPIA, WA 98502

TERRANE

11235 SE 6th St, Suite 130
Bellevue, WA 98004
p: 425-458-4488 | e: info@terrane.net

JOB NUMBER:	240074
DATE:	03/21/24
DRAFTED BY:	MJS
CHECKED BY:	CSP
SCALE:	1" = 20'
REVISION HISTORY	
04/08/24	ADDED PSE UTIL'S
SHEET NUMBER	
3 OF 7	