

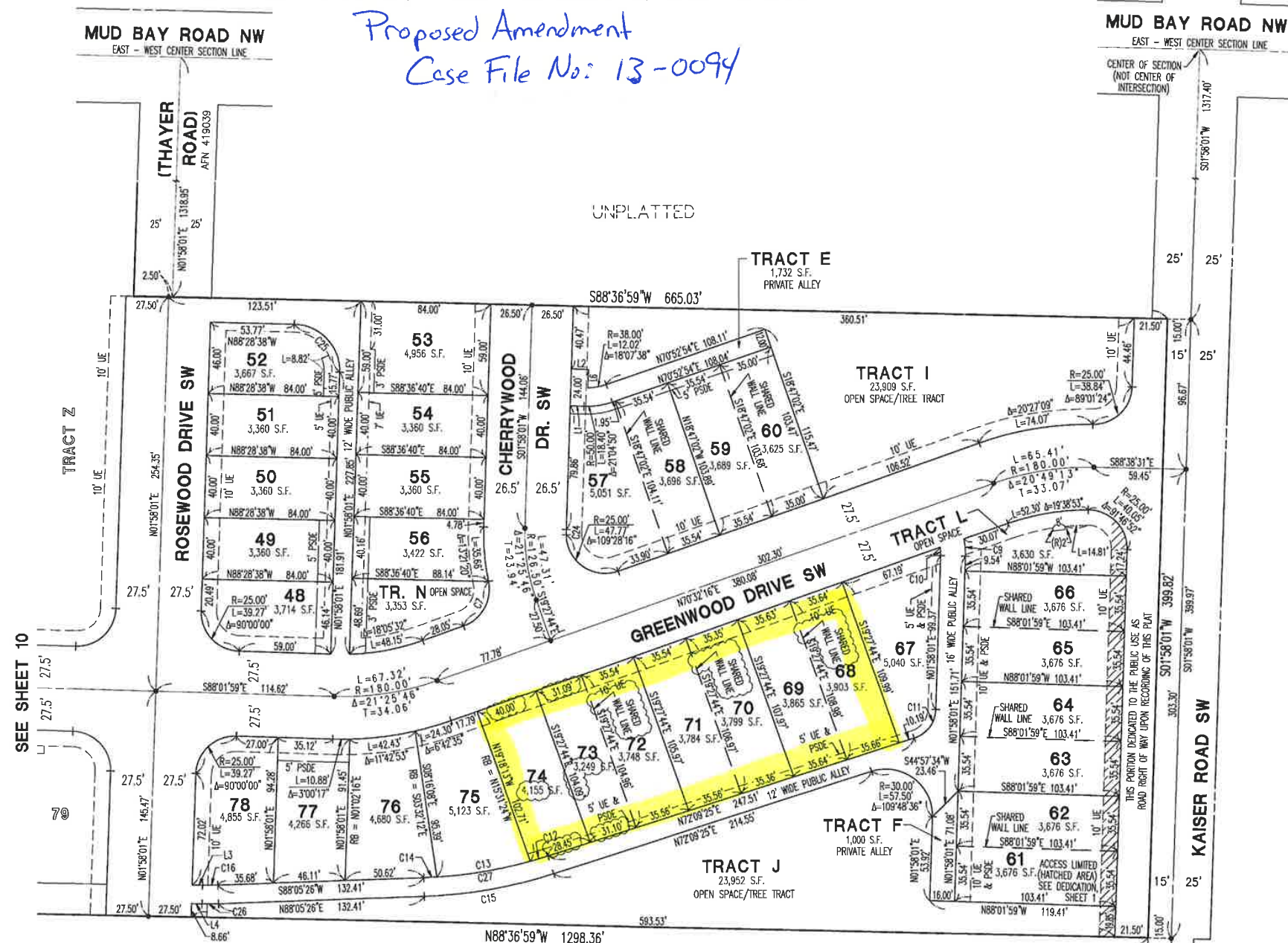
WOODBURY CROSSING

A PORTION OF THE NW 1/4, NE 1/4, SE 1/4 AND SW 1/4 OF THE SW 1/4 OF SECTION 17, TOWNSHIP 18 NORTH, RANGE 2 WEST, WILLAMETTE MERIDIAN CITY OF OLYMPIA, THURSTON COUNTY, WASHINGTON

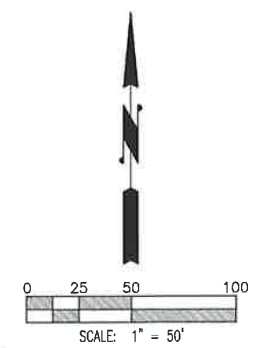
Proposed Amendment
Case File No. 13-0094

| CURVE TABLE | | | | |
|-------------|----------|--------|-----------|---------|
| CURVE | RADIUS | LENGTH | DELTA | TANGENT |
| C7 | 25.00' | 35.75' | 81°55'35" | 21.70' |
| C8 | NOT USED | | | |
| C9 | 48.00' | 11.33' | 13°31'24" | 5.69' |
| C10 | 32.00' | 5.32' | 9°31'21" | 2.67' |
| C11 | 20.00' | 24.50' | 70°11'24" | 14.05' |
| C12 | 293.00' | 11.86' | 2°19'11" | 5.93' |
| C13 | 293.00' | 61.30' | 11°59'12" | 30.76' |
| C14 | 293.00' | 8.32' | 1°37'36" | 4.16' |
| C15 | 305.00' | 84.82' | 15°56'01" | 42.68' |
| C16 | 144.00' | 9.74' | 3°52'35" | 4.87' |
| C24 | 100.00' | 3.42' | 1°57'29" | 1.71' |
| C25 | 30.00' | 47.36' | 90°26'39" | 30.23' |
| C26 | 156.00' | 10.55' | 3°52'35" | 5.26' |
| C27 | 293.00' | 81.48' | 15°56'02" | 41.01' |

| LINE TABLE | | |
|------------|-------------|----------|
| LINE | BEARING | DISTANCE |
| L1 | N88°02'16"W | 9.04' |
| L2 | N88°02'16"W | 11.00' |
| L3 | N88°01'59"W | 6.67' |
| L4 | N88°01'59"W | 6.67' |
| L5 | NOT USED | |
| L6 | N01°58'01"E | 11.95' |



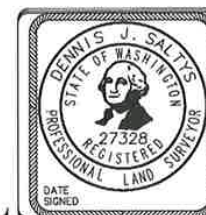
File: P:\16000a\16000a\preliminary\11027\p01-amendment.DWG Date/Time: 8/10/09 09:00 Scale: 1" = 50' TOBIN Xref: ---



LEGEND

- CITY OF OLYMPIA STANDARD ROAD MONUMENT TO BE SET AS CONSTRUCTION IS COMPLETED
- UE UTILITIES EASEMENT (SEE "EASEMENT PROVISIONS" NOTE ON SHEET 3)
- PSDE PRIVATE STORM DRAINAGE EASEMENT (SEE EASEMENT NOTE 3 ON SHEET 4)

NOTE: LOTS 48 THROUGH 56, 67, AND LOTS 74 THROUGH 78 ARE ZERO LOT LINE SINGLE FAMILY LOTS (SEE NOTES 11 AND 12 ON SHEET 4, NOTES AND RESTRICTIONS).
LOTS 57 THROUGH 66 AND LOTS 68 THROUGH 73 ARE TWO-UNIT TOWNHOUSE LOTS.



INDEX DATA
ALL OF SW1/4, SEC. 17-T18N-R2W, W.M.
Barghausen Consulting Engineers, Inc.
Civil Engineering, Land Planning, Surveying, Environmental Services
18215 72nd Avenue South - Kent, WA 98032 (425) 251-6222

SHEET 11 OF 13

JOB NO. 11027

VOLUME/PAGE