

Call for Artists – Artesian Commons Mural



The Artesian Commons is a park of many uses. Thousands of Thurston County residents visit this public space on a regular basis to fill up from Olympia’s famous Artesian Well. Visitors enjoy patronizing the local food trucks during their lunch breaks and for late-night snacks.

The park opened on May 4, 2014 and is evolving nearly every week. The goal is to create a vibrant urban park that appeals to a variety of user groups. One of the key components of accomplishing this goal is to create an environment that is both inviting and aesthetically pleasing. The Parking & Business Improvement Area (PBIA) has agreed to take on the challenge of adding art to the space.

The PBIA wishes to fund a mural on Petworks wall facing the Artesian Commons.

COMMUNITY VALUES

Since Artesian Commons is an important public space for the community, the PBIA wants to ensure the completed work speaks to the vision of a variety of stakeholder groups. A few of the vision trends that have been identified are:

- Flow of water and the Artesian well showing how many people utilize this resource
- Dynamic color schemes and/or imagery representing urban gathering spaces and recreation
- The site's history as a train station
- An urban oasis

Submissions incorporating one or more of these visions are encouraged, although fresh ideas will also be considered! Artists should be specific in their concept and its meaning.

The chosen artist will meet with representatives from Community Youth Services, Downtown residents, and neighboring business owners to hear their feedback on your design concept. The PBIA will help facilitate this meeting. We hope that this will be a valuable exercise in collaborative placemaking which enhances the effectiveness and quality of the finished product.

SUBMISSION REQUIREMENTS

Applications must be submitted to the Community Planning & Development front counter staff on the 2nd floor of City Hall (601 4th Ave E, Olympia, WA 98501) **before September 15, 2014 at 5:00 PM.**

All Applicants are **required** to submit a complete application that includes:

- **Contact Information**
- **Artist bio and/or artistic resume**
- **Digital images of previous works** submitted on a CD (jpg or tiff files only)
- **Conceptual drawing of the proposed mural**
- **Description of the concept of the proposed mural**
- **Description of any previous work that incorporated youth with design or concept**

ELIGIBILITY

- Applicants must provide proof of insurance before beginning installation

SELECTION CRITERIA

Artist selection will be based on artistic merit, community impact, relation to identified values (see above), and managerial capability using the following evaluation criteria of:

- Quality and strength of submitted work samples
- Experience working with community in some capacity
- Adaptability to the collaborative process of design
- Demonstrated knowledge of the unique consideration of exterior murals
- Ability to create a unique and engaging artwork appropriate in concept, materials and scale
- Availability to complete work before or by the end of September, 2014.
- Ability to maintain mural for a minimum of 12 months (touch up graffiti/vandalism)
- Component that incorporates youth in design or work

PROJECT BUDGET

The total budget for this project is \$5,000.

The mural budget must include all artist fees and costs associated with design, fabrication, travel, transportation to the site, insurance, permits, and installation.

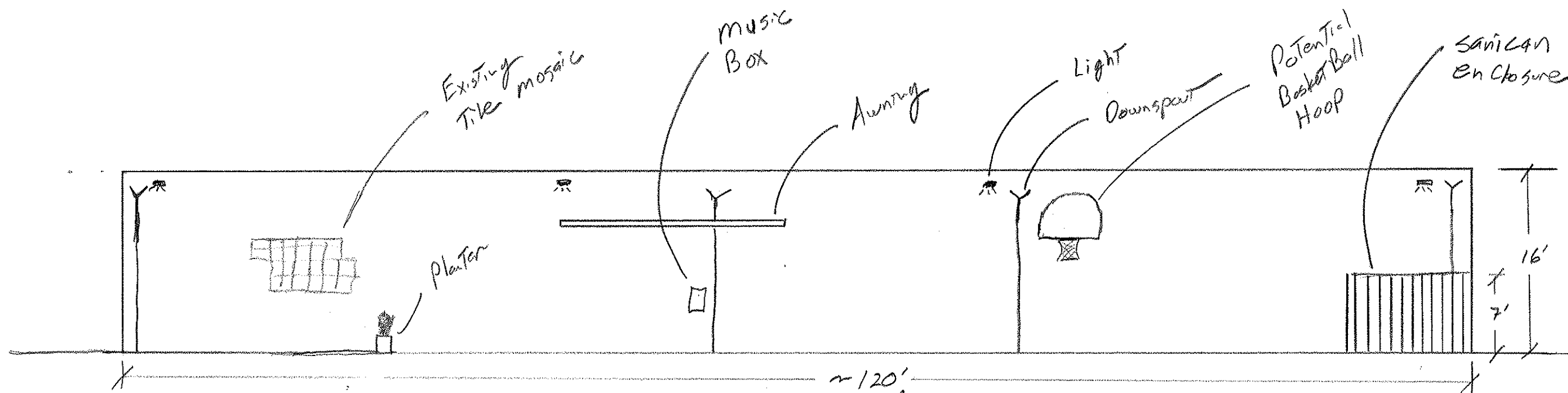
Payments will be made directly to the artist upon completion of the project. Requests for preliminary funds for supplies will be considered.

TENTATIVE PROJECT SCHEDULE

| Date | Activity |
|------------------------------------|--|
| August 15, 2014 | Begin accepting applications |
| September 15, 2014 | Submission Period Ends at 5:00 PM |
| September 16-19, 2014 | PBIA Clean & Safe reviews applications |
| September 19, 2014 | Artist is Selected |
| Late September, 2014 | Artist meets with stakeholder groups to discuss design |
| Late September/Early October, 2014 | Mural Installation Begins |
| October, 2014 | Completion of Mural |

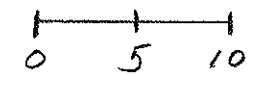
QUESTIONS?

Contact Brian Wilson, bwilson1@ci.olympia.wa.us



West Wall of Artesian Commons

Scale 1" = 10'



by KS
Aug 20, 2014