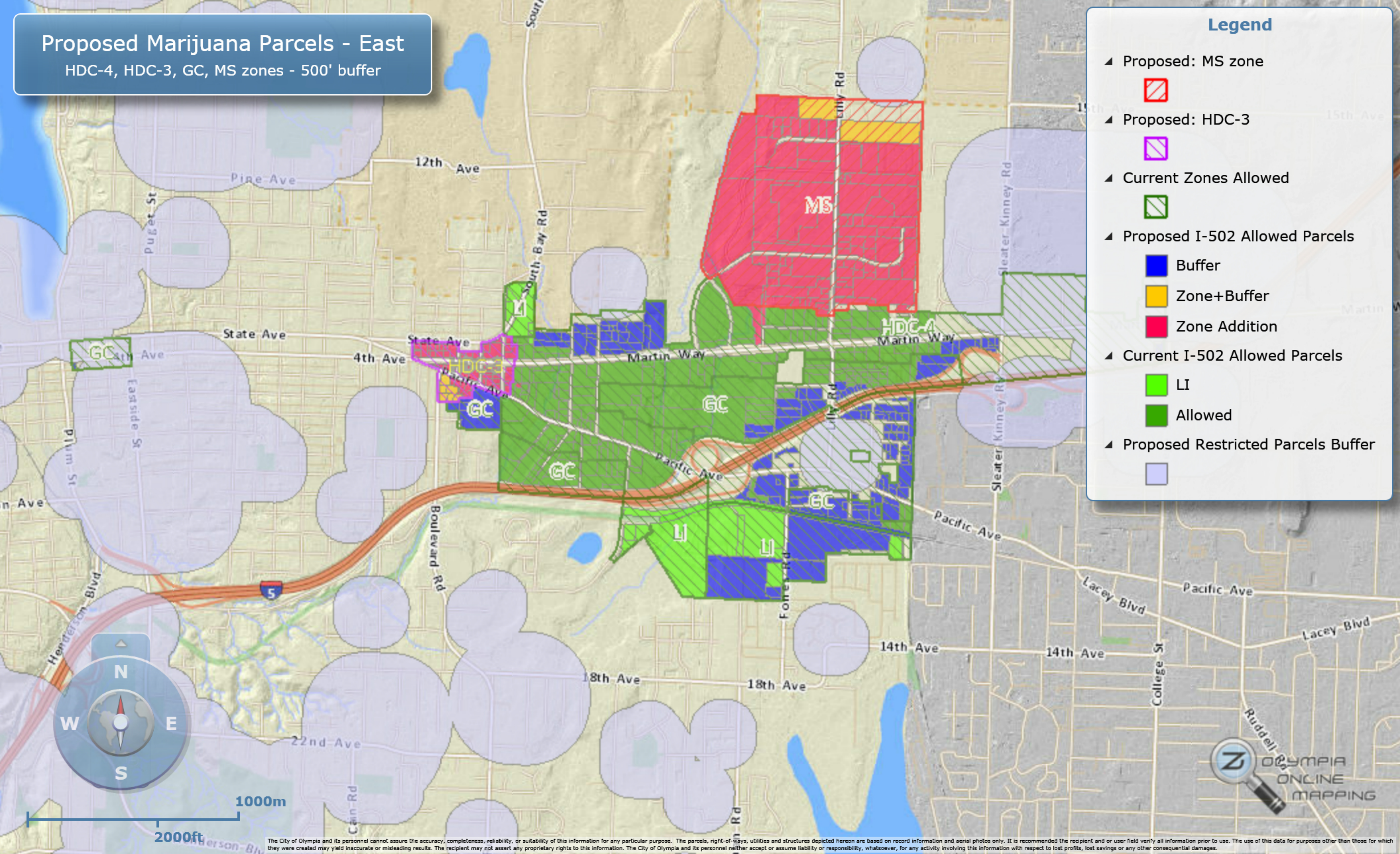


Proposed Marijuana Parcels - East

HDC-4, HDC-3, GC, MS zones - 500' buffer

Legend

- ▲ Proposed: MS zone
 - ▲ Proposed: HDC-3
 - ▲ Current Zones Allowed
 - ▲ Proposed I-502 Allowed Parcels
 - ▲ Current I-502 Allowed Parcels
 - ▲ Proposed Restricted Parcels Buffer
- Buffer
- Zone+Buffer
- Zone Addition
- LI
- Allowed



The City of Olympia and its personnel cannot assure the accuracy, completeness, reliability, or suitability of this information for any particular purpose. The parcels, right-of-ways, utilities and structures depicted hereon are based on record information and aerial photos only. It is recommended the recipient and or user field verify all information prior to use. The use of this data for purposes other than those for which they were created may yield inaccurate or misleading results. The recipient may not assert any proprietary rights to this information. The City of Olympia and its personnel neither accept or assume liability or responsibility, whatsoever, for any activity involving this information with respect to lost profits, lost savings or any other consequential damages.