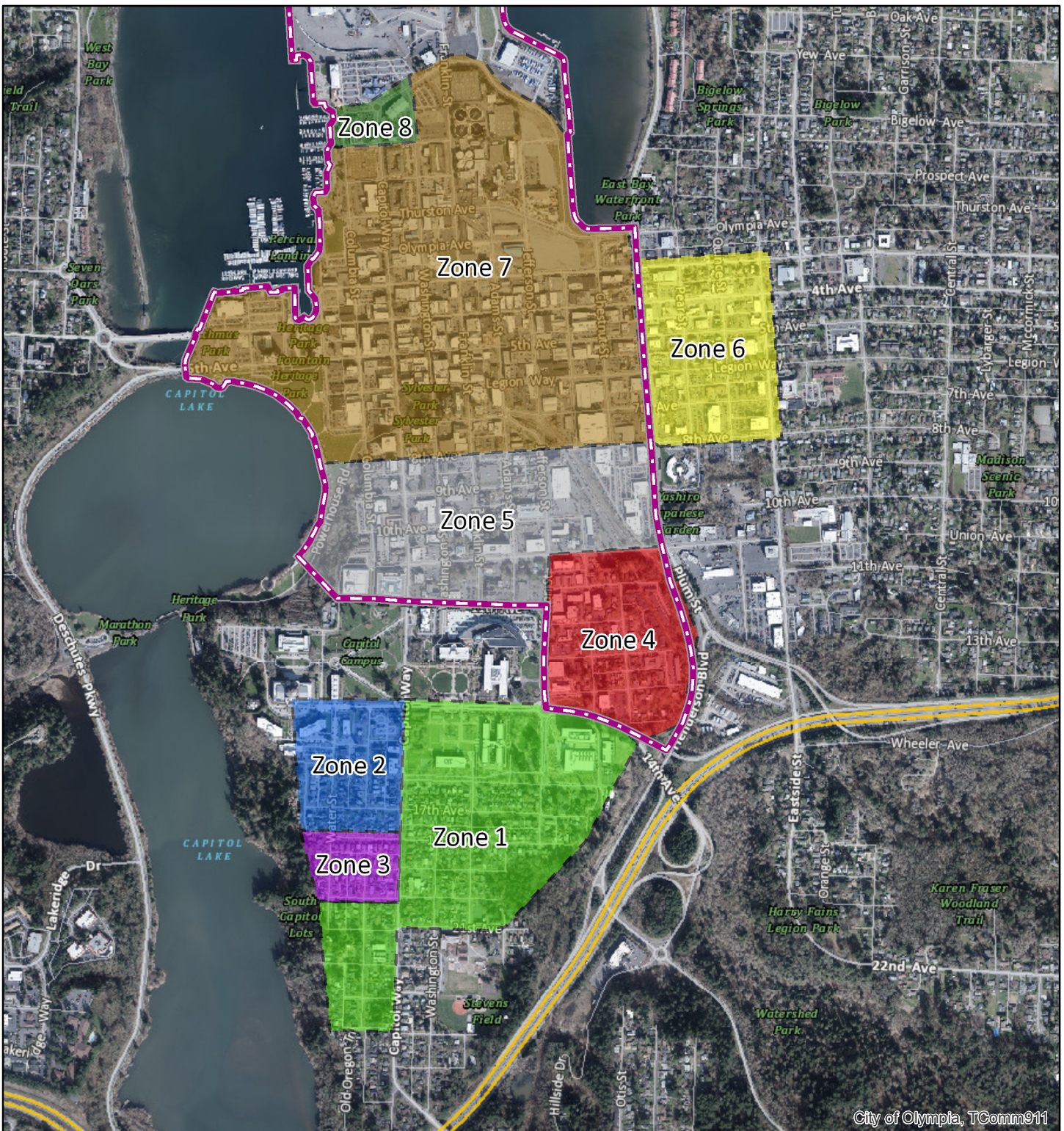


# Residential Parking Zones

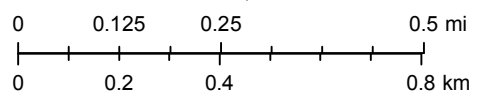


City of Olympia, TComm911

2/12/2020, 2:41:25 PM

1:15,000

- |                        |   |   |
|------------------------|---|---|
| Downtown Planning Area | 3 | 7 |
| <b>Parking Zones</b>   | 4 | 8 |
| 1                      | 5 |   |
| 2                      | 6 |   |



The City of Olympia and its personnel cannot assure the accuracy, completeness, reliability or suitability of this information for any particular purpose. The parcels, right-of-ways, utilities and structures depicted hereon are based on record information and aerial photos only. It is recommended the recipient and or user field verify all information prior to use. The use of this data for purposes other than those for which they were created may yield inaccurate or misleading results. The recipient may not assert any proprietary right to this information. The City of Olympia and its personnel neither accept or assume any liability or responsibility, whatsoever, for any activity involving this information with respect to lost profits, lost savings or any other consequential damages.