

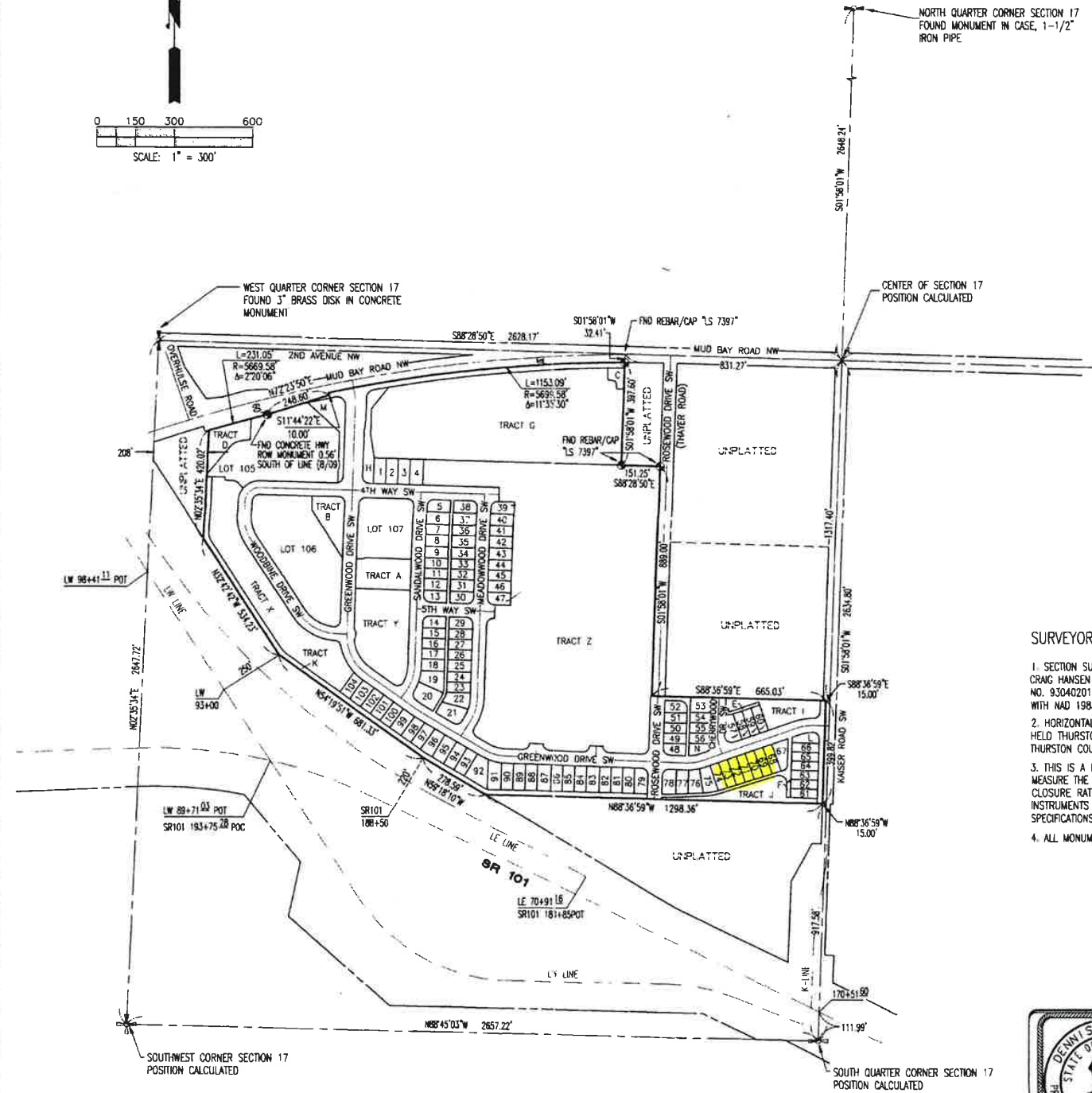
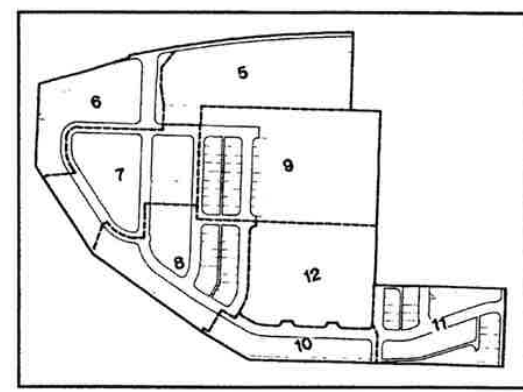
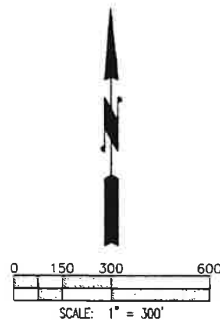
PLAT 4112869 2/13

# WOODBURY CROSSING

A PORTION OF THE NW 1/4, NE 1/4, SE 1/4 AND SW 1/4 OF THE SW 1/4 OF SECTION 17, TOWNSHIP 18 NORTH, RANGE 2 WEST, WILLAMETTE MERIDIAN CITY OF OLYMPIA, THURSTON COUNTY, WASHINGTON

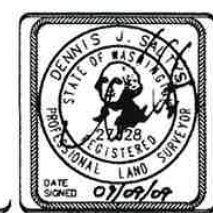
Page 2 of 13  
4112869 04.30.09  
PLAT  
BARGHAUSEN CONSULTING ENGINEERS, INC.  
18215 72nd Avenue South - Kent, WA 98032 (425) 251-6222

PLAT 411 2869 2/13



### SURVEYOR'S NOTES

- SECTION SUBDIVISION AND SUBJECT PROPERTY BOUNDARY WERE CALCULATED FROM RECORD OF SURVEY BY CRAIG HANSEN DATED APRIL 1993 AND RECORDED IN VOLUME 32 OF SURVEYS, PAGE 31, UNDER RECORDING NO. 9304020159, RECORDS OF THURSTON COUNTY, WASHINGTON. HANSEN SURVEY WAS ROTATED TO AGREE WITH NAD 1983 (91).
- HORIZONTAL DATUM IS NAD 1983 (91), BASED ON INFORMATION PUBLISHED BY THURSTON COUNTY. WE HELD THURSTON COUNTY SURVEY CONTROL POINT NO. 393 FOR POSITION NETWORK ANALYSIS INCLUDING THURSTON COUNTY SURVEY CONTROL POINT NOS. 53, 54, 997, 1013 AND 1015.
- THIS IS A FIELD TRAVERSE SURVEY. A SOKKIA FIVE-SECOND ELECTRONIC TOTAL STATION WAS USED TO MEASURE THE ANGULAR AND DISTANCE RELATIONSHIPS BETWEEN THE CONTROLLING MONUMENTATION AS SHOWN. CLOSURE RATIOS OF THE TRAVERSE MET OR EXCEEDED THOSE SPECIFIED IN WAC 332-130-090. ALL INSTRUMENTS AND EQUIPMENT HAVE BEEN MAINTAINED IN ADJUSTMENT ACCORDING TO MANUFACTURERS' SPECIFICATIONS.
- ALL MONUMENTS NOTED AS "FOUND" WERE VISITED NOVEMBER 2004.



INDEX DATA  
ALL OF SW1/4, SEC. 17-T18N-R2W, W.M.

**Barghausen Consulting Engineers, Inc.**  
Civil Engineering, Land Planning, Surveying, Environmental Services  
18215 72nd Avenue South - Kent, WA 98032 (425) 251-6222

**SHEET 2 OF 13**

File Path: I:\000s\11022\surveys\plats\11022\platt1.dwg Date Time: 8/10/09 09:00 Scale: 1" = 300' User: KMASSON Xref:

JOB NO. 11027

DATE SIGNED