

INTER-DEPARTMENTAL MEMORANDUM OF AGREEMENT
between
Olympia Parks, Arts & Recreation Department and Olympia Public Works Department
for
Transfer of Stormwater Properties into Parks Inventory

THIS AGREEMENT is effective as of the date of the last authorizing signature affixed hereto. The parties to this Agreement are the Olympia Parks, Arts & Recreation Department (herein referred to as “OPARD”) and the Olympia Public Works Department (herein referred to as “PW”), collectively referred to as “the Partners.”

WHEREAS, the City of Olympia has acquired multiple properties for utility purposes, such as stormwater management, water quality protection, habitat restoration and enhancement, and groundwater protection; and

WHEREAS, the properties are known as Black Lake Meadows, Taylor Wetlands, Indian Creek, and Yaeger Wetland and are depicted on Exhibit A attached hereto (the Properties); and

WHEREAS, the Properties are currently managed and controlled by the City’s Public Works Water Resources, Stormwater/Wastewater Operations (the Utility); and

WHEREAS, OPARD has established open space and recreation level of service goals to meet the needs of our growing community; and

WHEREAS, the Utility desires to enter into an agreement to transfer primary management and control of the Properties to OPARD; and

WHEREAS, OPARD has agreed to accept primary management and control of the Properties; and

WHEREAS, cooperative partnership between the two departments on property and habitat management is cost effective and adds value to Olympia residents by accomplishing multiple goals; and

WHEREAS, adding the Properties to the City’s Park inventory will expand approximately 98 acres of public open space and recreation opportunities for Olympia residents; and

WHEREAS, on _____, 2021 the Olympia City Council passed a resolution transferring primary management and control of the Properties to OPARD and adding the Properties to the City’s park inventory;

NOW, THEREFORE, THE PARTNERS AGREE AS FOLLOWS:

1. Primary Management. The City-Owned properties known as Black Lake Meadows, Taylor Wetland, Indian Creek, and Yauger Wetland (the Properties, as depicted on Exhibit A) will continue to be managed in a manner consistent with PW's goals to protect, enhance, and restore aquatic habitat functions provided by wetlands, streams, lakes, marine shorelines, and riparian areas. Groundwater quality will be protected to ensure clean drinking water for present and future generations and to avoid the need for expensive replacement or treatment facilities. OPARD will manage public access and recreational amenities of the Properties. Both Partners will continue to collaborate on habitat restoration and enhancement consistent with the Charter for Habitat Enhancement Efforts on Parks-Managed Properties. Both Partners will be authorized to serve trespass notices for behavior that is illegal, violent, or negatively impacts the intended use or function of the Properties should the need arise.

2. Partner Responsibilities. The responsibilities of the Partners are as follows:
 - A. Public Work's Responsibilities
 - Repair of any damaged infrastructure related to public access prior to transfer (i.e., vandalized signage, gates, etc.)
 - Maintenance of stormwater facilities
 - Maintenance of existing roadway access for maintenance vehicles (i.e., vector truck)
 - Habitat restoration and enhancement
 - Groundwater protection
 - Vegetation management
 - Hazard tree assessment/removals adjacent to stormwater infrastructure, service roads that access stormwater infrastructure and on property boundaries
 - Expansion of stormwater facilities if necessary

 - B. OPARD's Responsibilities:
 - Posting and maintaining park rules signage
 - Enforcement of park rules and serving of legal notices by Park Rangers
 - Trail maintenance and construction excluding service roads that access stormwater infrastructure
 - Litter removal
 - Coordination of volunteer work parties to enhance habitat restoration and ecological function
 - Hazard tree assessment/removals for trees adjacent to trails and parking areas
 - Maintenance and management of parking lots and associated gates

3. The focus of this Agreement concerns the transfer of City-owned properties into the City's park inventory. Transfer of the Properties does not change the past practice that PW is in charge of the maintenance and operation of park stormwater facilities that treat more than the stormwater of the park itself. (Examples include the stormwater facilities in Yauger Park and the Grass Lake Nature Park dam on Kaiser Road). It is also understood by both PW and OPARD that PW reserves the right to expand existing stormwater facilities and infrastructure on the Properties should the need arise.

**CITY OF OLYMPIA PUBLIC WORKS
DEPARTMENT**

**CITY OF OLYMPIA PARKS, ARTS, AND
RECREATION DEPARTMENT**

By: _____
Rich Hoey, Director
Date: _____

By: _____
Paul Simmons, Director
Date: _____

APPROVED AS TO FORM:



Deputy City Attorney

EXHIBIT A



Black Lake Meadows Property

Tax Parcels 12821340000, 12821330100, and 12821330300 - 45.02 acres



Vicinity Map



0 245 490 Feet 1 inch = 500 feet

This map is intended for 8.5x11" portrait printing.

The City of Olympia and its personnel cannot assure the accuracy, completeness, reliability, or suitability of this information for any particular purpose. The parcels, right-of-ways, utilities and structures depicted herein are based on record information and aerial photos only. It is recommended the recipient and/or user field verify all information prior to use. The use of this data for purposes other than those for which they were created may yield inaccurate or misleading results. The recipient may not assert any proprietary rights to this information. The City of Olympia and its personnel neither accept or assume liability or responsibility, whatsoever, for any activity involving this information with respect to lost profits, lost savings or any other consequential damages.

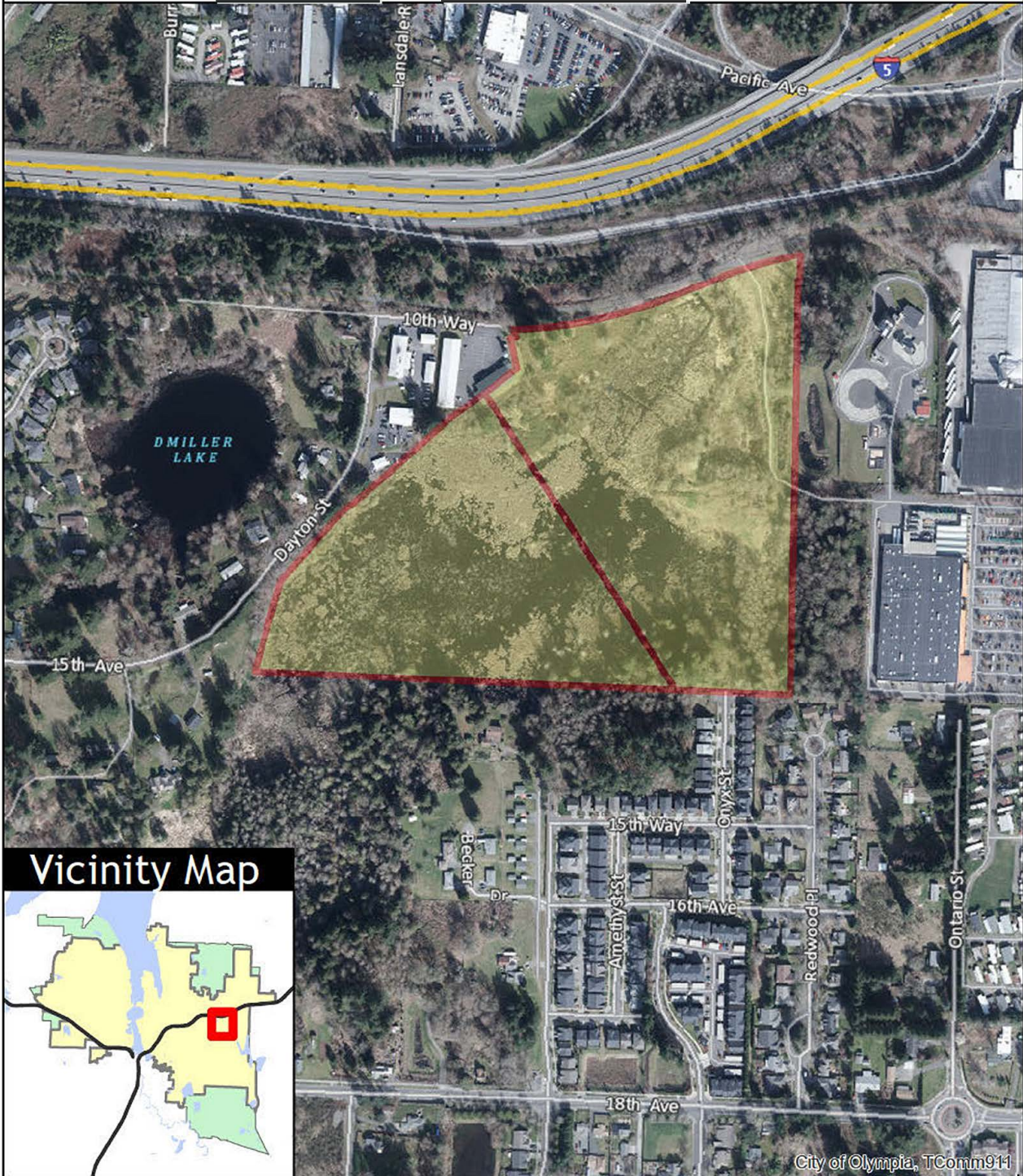


EXHIBIT A



Taylor Wetlands Property

Tax Parcels 09840036000, and 09840037000 - 40.88 acres



Vicinity Map



0 245 490 Feet

1 inch = 500 feet

This map is intended for 8.5x11" portrait printing.

The City of Olympia and its personnel cannot assure the accuracy, completeness, reliability, or suitability of this information for any particular purpose. The parcels, right-of-ways, utilities and structures depicted hereon are based on record information and aerial photos only. It is recommended the recipient and or user field verify all information prior to use. The use of this data for purposes other than those for which they were created may yield inaccurate or misleading results. The recipient may not assert any proprietary rights to this information. The City of Olympia and its personnel neither accept or assume liability or responsibility, whatsoever, for any activity involving this information with respect to lost profits, lost savings or any other consequential damages.

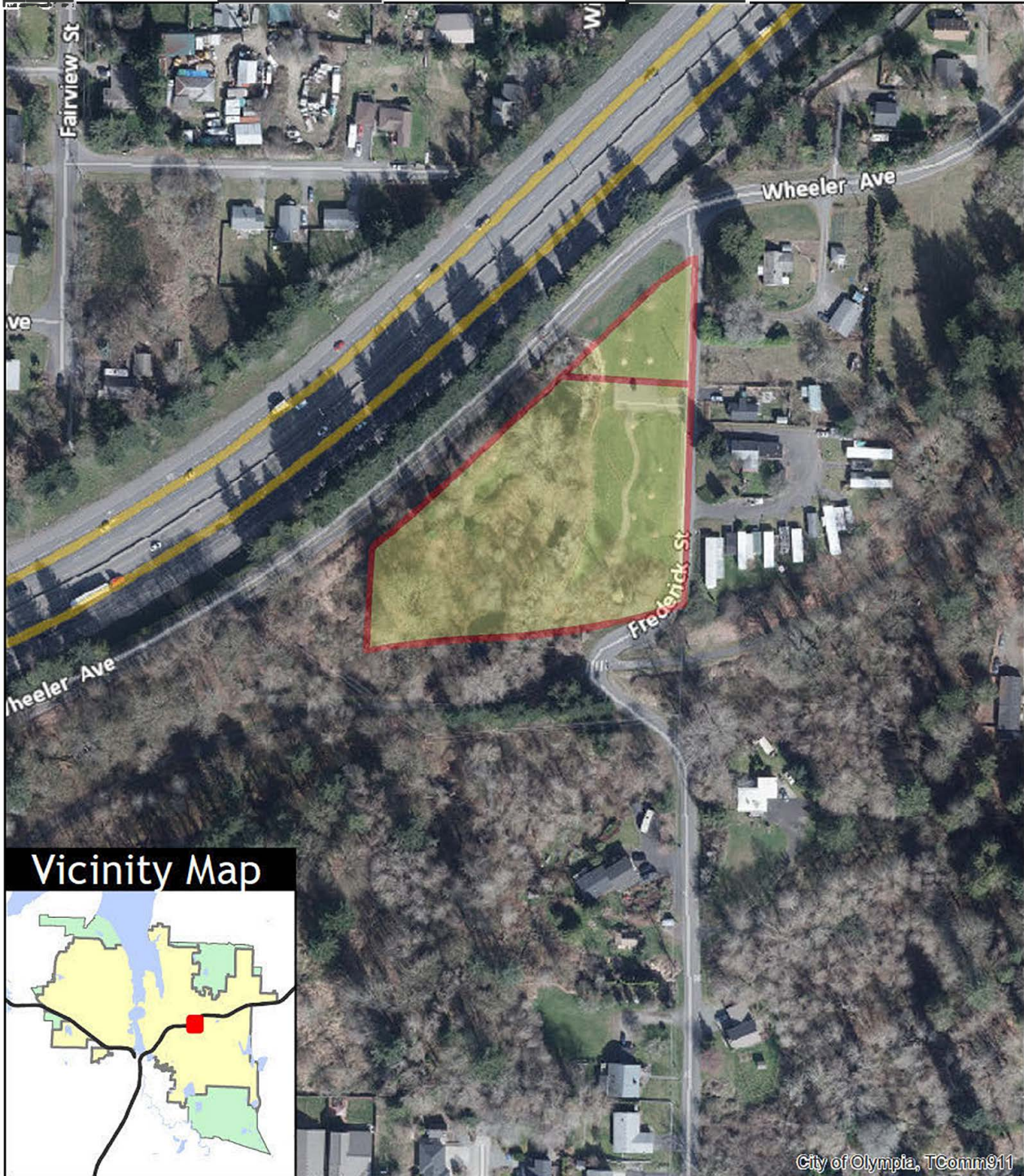


EXHIBIT A



Indian Creek Property

Tax Parcels 32800900000, and 32800600000 - 3.35 acres



City of Olympia, TComm911

0 95 190 Feet

1 inch = 200 feet

This map is intended for 8.5x11" portrait printing.

The City of Olympia and its personnel cannot assure the accuracy, completeness, reliability, or suitability of this information for any particular purpose. The parcels, right-of-ways, utilities and structures depicted herein are based on record information and aerial photos only. It is recommended the recipient and or user field verify all information prior to use. The use of this data for purposes other than those for which they were created may yield inaccurate or misleading results. The recipient may not assert any proprietary rights to this information. The City of Olympia and its personnel neither accept or assume liability or responsibility, whatsoever, for any activity involving this information with respect to lost profits, lost savings or any other consequential damages.

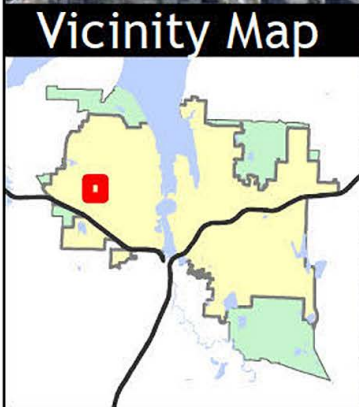


EXHIBIT A



Yauger Wetland Property

Tax Parcel 12816310500 - 8.43 acres



0 145 290 Feet 1 inch = 300 feet

This map is intended for 8.5x11" portrait printing.

The City of Olympia and its personnel cannot assure the accuracy, completeness, reliability, or suitability of this information for any particular purpose. The parcels, right-of-ways, utilities and structures depicted herein are based on record information and aerial photos only. It is recommended the recipient and or user field verify all information prior to use. The use of this data for purposes other than those for which they were created may yield inaccurate or misleading results. The recipient may not assert any proprietary rights to this information. The City of Olympia and its personnel neither accept or assume liability or responsibility, whatsoever, for any activity involving this information with respect to lost profits, lost savings or any other consequential damages.

