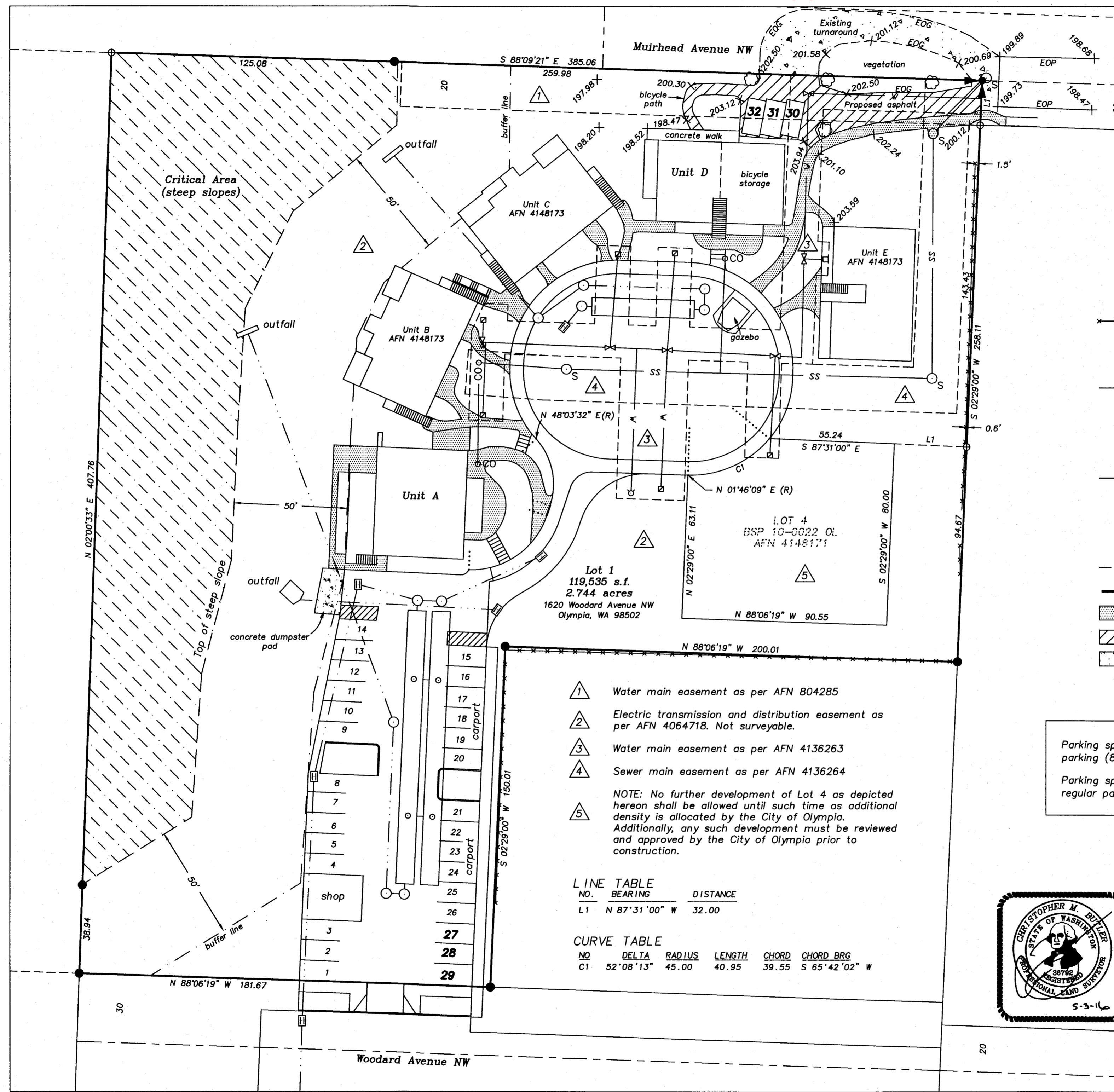
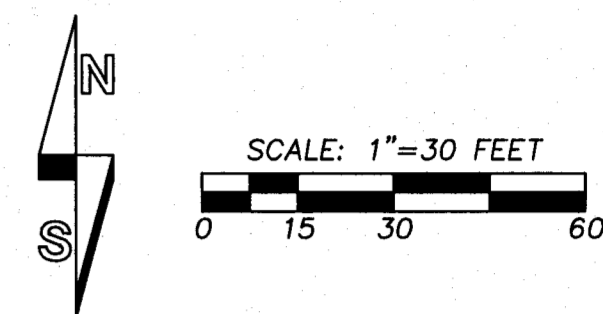


A portion of The Dickerson Donation Land Claim in the Northeast Quarter of the Southwest Quarter of Section 10, Township 18 North, Range 2 West, W.M. in Thurston County, Washington.

(Page 1 of 1 Pages)



- Previously set 1/2" rebar with cap LS 36792 or found corner as noted
- ⊕ Calculated position
- Fence line
- <sub>S</sub> Sewer manhole
- <sub>CO</sub> Sewer cleanout
- SS— Sewer line
- ∇ Water valve
- ⊠ Water meter
- ⊕ Hydrant
- W— Water line
- Storm manhole
- Storm cleanout
- ▭ Catch basin
- Storm line
- Retaining wall
- ▨ Walking path
- ▨ Proposed asphalt
- ▨ Existing gravel
- EOP Edge of pavement
- EOG Edge of gravel

Parking spaces 30 and 32 are proposed compact parking (8' x 16').  
 Parking spaces 27, 28, 29 and 31 are proposed regular parking spaces (9' x 16')

- △1 Water main easement as per AFN 804285
  - △2 Electric transmission and distribution easement as per AFN 4064718. Not surveyable.
  - △3 Water main easement as per AFN 4136263
  - △4 Sewer main easement as per AFN 4136264
  - △5
- NOTE: No further development of Lot 4 as depicted hereon shall be allowed until such time as additional density is allocated by the City of Olympia. Additionally, any such development must be reviewed and approved by the City of Olympia prior to construction.

LINE TABLE

NO.	BEARING	DISTANCE
L1	N 87°31'00" W	32.00

CURVE TABLE

NO	DELTA	RADIUS	LENGTH	CHORD	CHORD BRG
C1	52°08'13"	45.00	40.95	39.55	S 65°42'02" W



**Woodard Lane Cohousing**

Proposed additional parking and bike path for the City of Olympia # 13-0024

**BUTLER SURVEYING INC.**

475 NW CHEHALIS AVENUE  
 P.O. BOX 149, CHEHALIS, WA 98532  
 360/748-8803

Drawn S. Spiro	Date 05-03-16
Checked	Job No. 05-67A
Scale 1" = 30'	Sheet 1 of 1