



OLYMPIA

2045

Climate Action & Resilience



Agenda

1. Climate Change Planning in Washington
2. Olympia 2045: Climate Element
 - Mitigation sub-element
 - Resilience sub-element
3. Goals and Policies
4. Next Steps



Climate Change Planning in Washington

HB 1181

HB 1181 – Climate Change Planning

ESSHB – 1181 – “Climate Change – Planning”:

- Adds new Growth Management Action (GMA) Planning Goal: climate change and resiliency
- Requires a Climate Change and Resiliency Element for jurisdictions required to plan under GMA
- Adds requirements for the Land Use, Transportation, Parks, and Capital Facilities Elements
- Directs Commerce with other state agencies to provide guidance documents and funding opportunities

HB 1181 – Climate Change Planning

Overarching Goals:

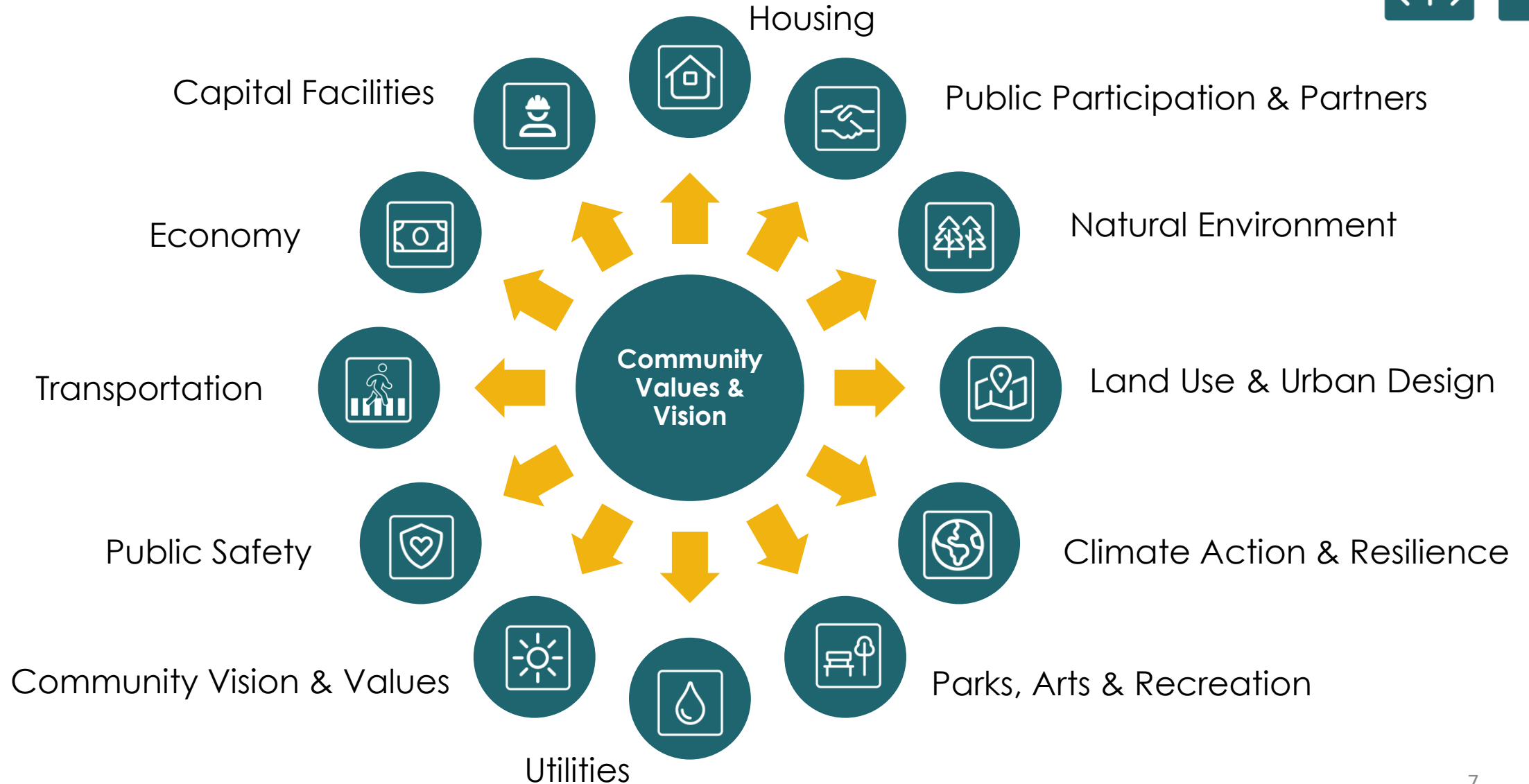
- Reduce greenhouse gas emissions
- Reduce vehicle miles traveled
- Improve climate preparedness, response and recovery efforts
- Maximize co-benefits and prioritize environmental justice in the development of policies/programs to achieve these goals.

Olympia 2045

Climate Element

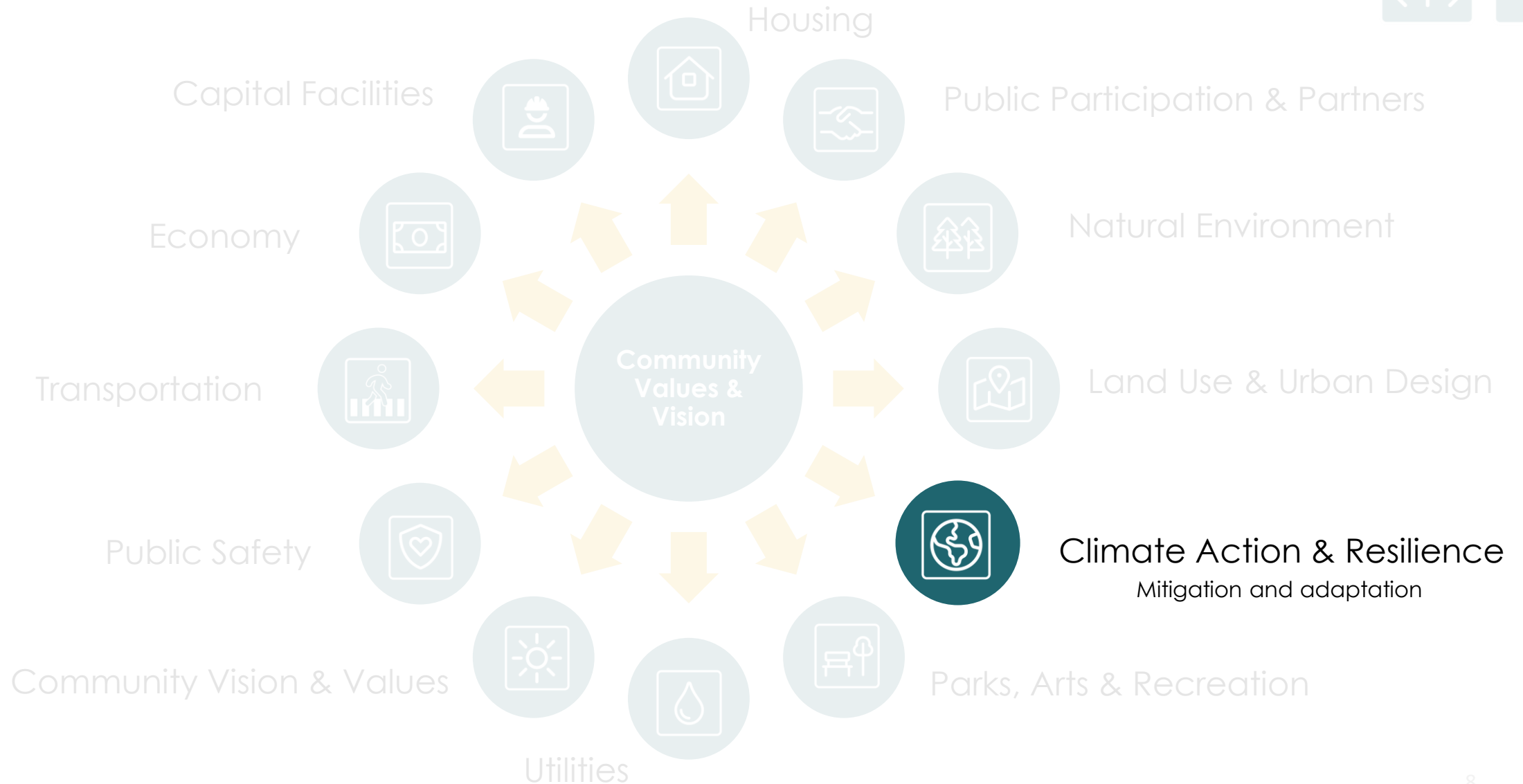
Olympia 2045 Chapters

Equity and health are addressed
in every chapter.



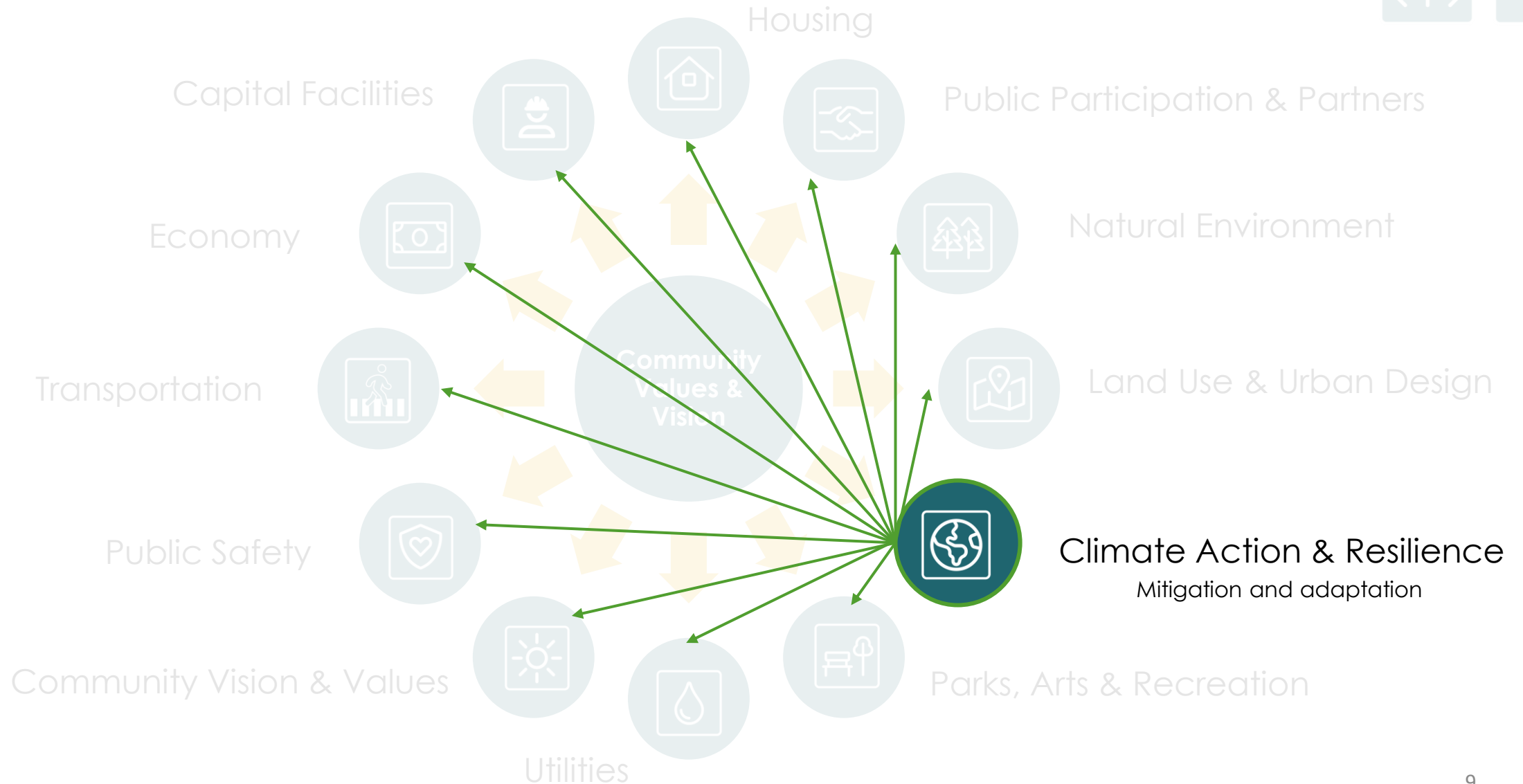
The Climate Chapter

Equity and health are addressed
in every chapter.

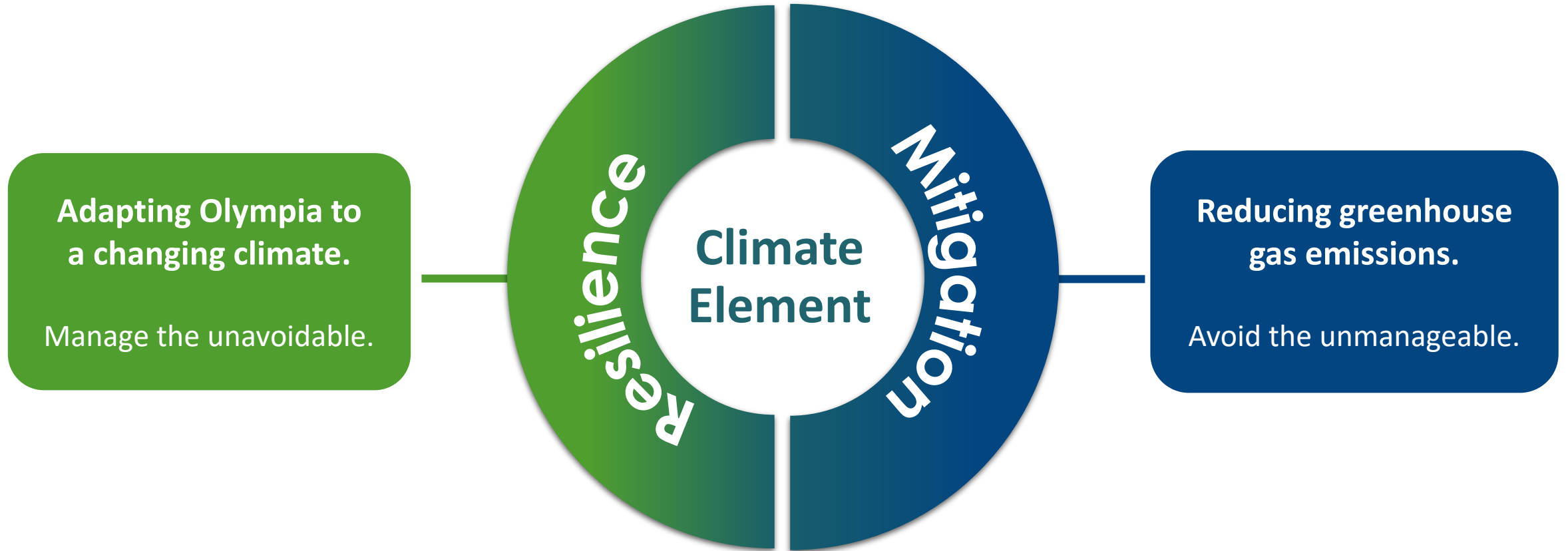


Climate Integration with All Chapters

Equity and health are addressed
in every chapter



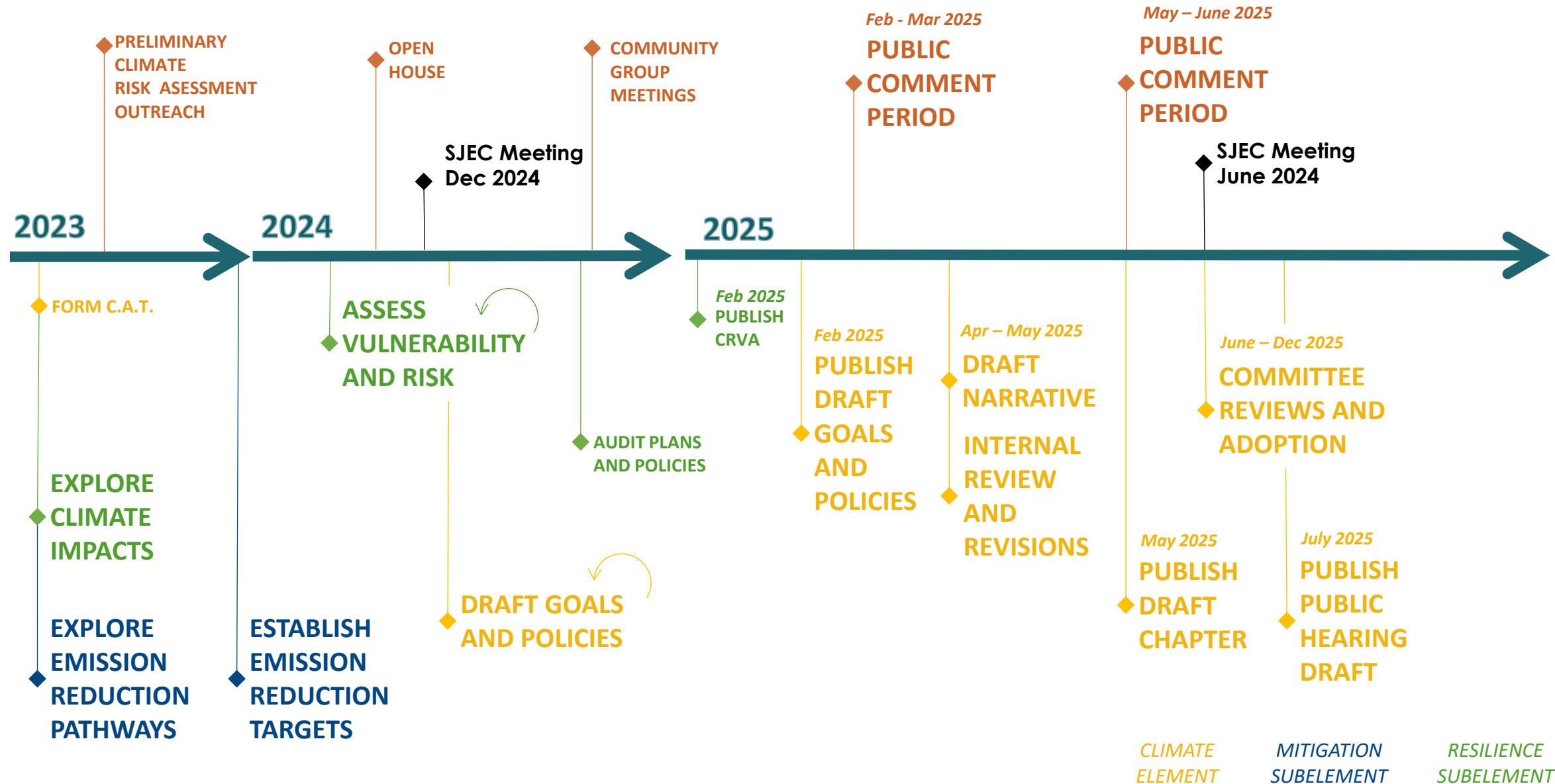
The 2 Parts to the Climate Element



Developing the Climate Element

COMMUNITY
INPUT

CITY OF OLYMPIA
STAFF

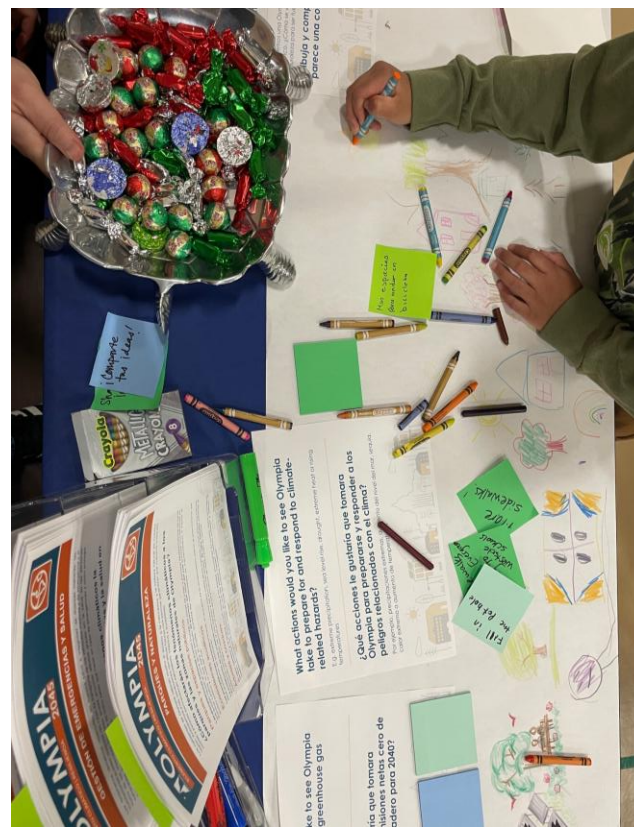
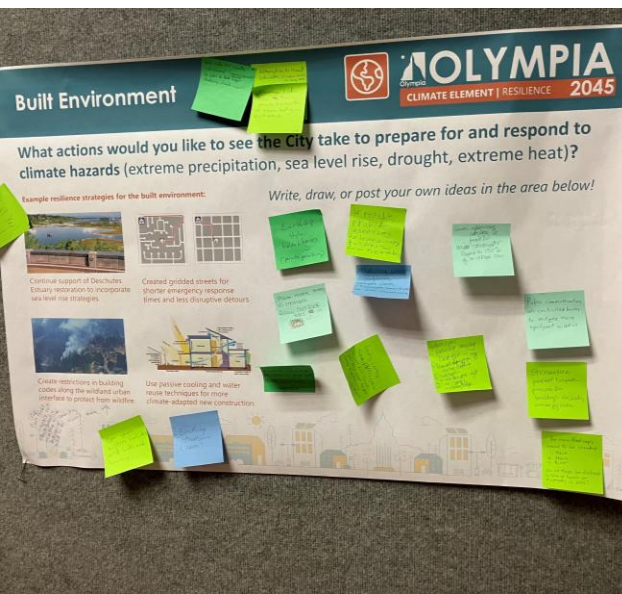




Open House



Community Events



Community Engagement and Feedback

- Open houses
- Q&A sessions
- In-person tabling at community events
- Targeted community group conversations
- Engage Olympia surveys
- Direct email
- City advisory committees

We have received 480+ comments to date throughout the development process.

Mitigation

Actions to reduce emissions that cause climate change.

Olympia's Emission Reduction Targets

The City of Olympia has committed to:

- Reduce greenhouse gas emissions 59% below 2015 levels by 2030
- Olympia Climate Inheritance Resolution to achieve net-zero emissions by 2040

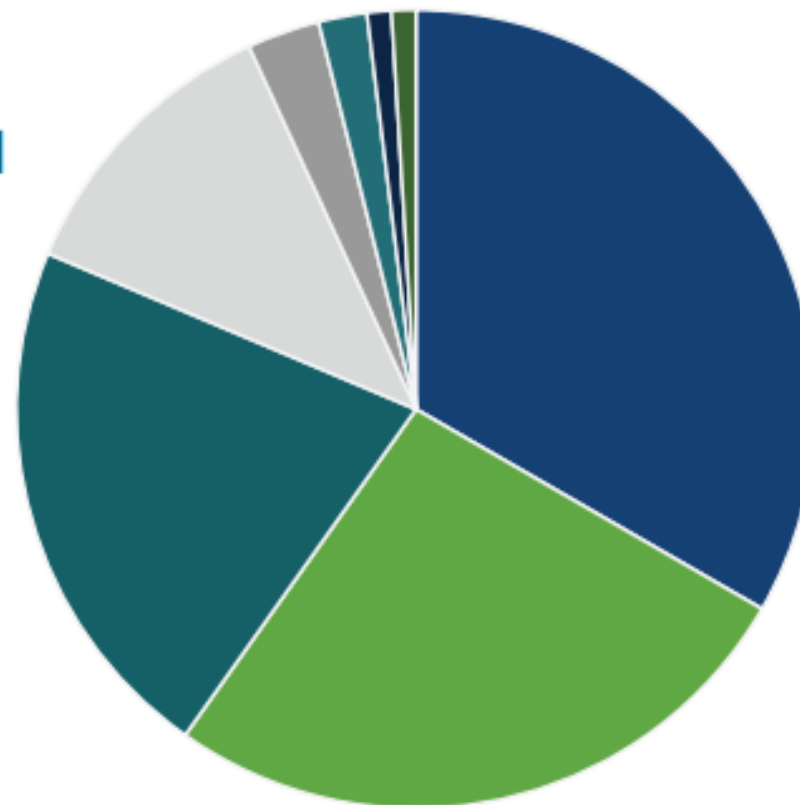
Net-Zero:

- Reducing emissions to the greatest extent feasible
- Offsetting remaining emissions

Greenhouse Gas Emissions Sources

EMISSIONS AT A GLANCE

- 1** TRANSPORTATION
34%
- 2** COMMERCIAL ENERGY
27%
- 3** RESIDENTIAL ENERGY
22%



- Transportation & Mobile Sources (34%)
- Commercial Energy (27%)
- Residential Energy (22%)
- Upstream (12%)
- Solid Waste (3%)
- Industrial Energy (2%)
- Water & Wastewater (<1%)
- Process & Fugitive (<1%)

Strategies to Reduce Greenhouse Gas Emissions

Reduce Vehicle
Miles Traveled
(VMT)

Promote
Building Energy
Efficiency

Support Electric
Vehicle
(EV) Adoption

Reduce Solid
Waste
Generation

Resilience

Actions to adapt, prepare for, and recover from climate-related hazards.

Future Climate Conditions in Olympia

SUMMER CONDITIONS



More Hot Days ↑ **24 days**
2050

90°F Max Humidex Days
(Baseline: 14 days)



Drought ↑ **30%**
2050

Precipitation Drought
(Baseline: 25%)



Wildfire ↑ **3%**
2050

Wildfire Likelihood
(Baseline: 0%)

WINTER CONDITIONS



Extreme Rainfall ↑ **13%**
2050

Percent Change in Magnitude
of 25-Year Storm



Sea Level Rise ↑ **11-13 in**
2050

Most-Likely Scenario



Parks



Drinking Water



Farmer's Market



Community Events

Building Resilience Across Sectors

- Emergency management, preparedness, and response
- Public health and wellbeing
- Economic and community development
- Water Resources and Utilities
- Transportation
- Ecosystems, Agriculture, and Parks
- Housing and Energy

Climate Risks and Vulnerability Results

- Changing summer conditions will affect forest, marine, and aquatic ecosystems and lead to increased use of park facilities
- Extreme heat and wildfire can lead to periodic disruptions to energy supply
- Wildfire smoke and extreme heat will significantly impact public health of the community, especially those most vulnerable
- Extreme heat and wildfire smoke will impact tourism, events, and local businesses
- Sea level rise will pose an increasing challenge to emergency management, sewer systems, downtown, and local businesses
- Heavy rainfall can lead to increased runoff, pollution, and possible closures to parks



Climate Risks and Vulnerability Results

- Changing summer conditions will affect forest, marine, and aquatic ecosystems and lead to increased use of park facilities
- Extreme heat and wildfire can lead to periodic disruptions to energy supply
- Wildfire smoke and extreme heat will significantly impact public health of the community, especially those most vulnerable
- Extreme heat and wildfire smoke will impact tourism, events, and local businesses
- Sea level rise will pose an increasing challenge to emergency management, sewer systems, downtown, and local businesses
- Heavy rainfall can lead to increased runoff, pollution, and possible closures to parks

→ These results directly contribute to the new and modified goals and policies included within chapters.



Goals and Policies

Climate Element

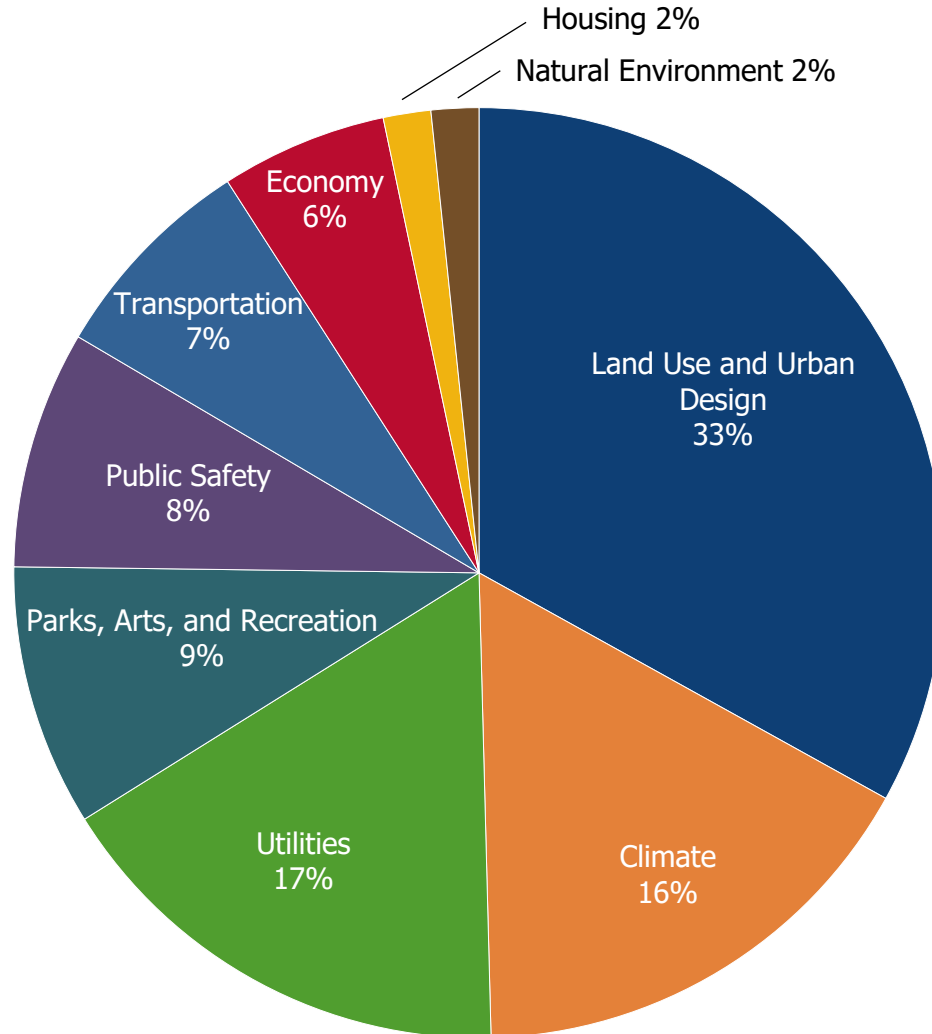
Summary: Goals and Policies

Goal or Policy?		Changes?	Count
Existing	Goal	No change in existing language.	54
	Policy	No change in existing language.	85
	Goal	Modified	4
	Policy	Modified	25
New	Goal	-	19
	Policy	-	102
Total DRAFT Goals and Policies			289

Summary: New Goals and Policies By Chapter

2/3 of the new goals and policies are found within the:

- Land Use and Urban Design Chapter (40 goals and policies)
- Climate Chapter (20 goals and policies)
- Utilities Chapter (20 goals and policies)



What we heard from SJEC in December:

- Incorporate equity explicitly into climate decisions and project prioritization
- Address community centers specifically in sea level rise response and emergency preparedness
- Outreach and engagement with the disability community

What we heard from SJEC in December:

- Incorporate equity explicitly into climate decisions and project prioritization
- Address community centers specifically in sea level rise response and emergency preparedness
- Outreach and engagement with the disability community

How we incorporated feedback into the draft:

- Added an overarching environmental justice goal and policies to climate programs.
- Equity considerations and language are added throughout policies, where most relevant.
- Added specific language prioritizing vulnerable populations and community centers when pursuing building retrofits for resiliency.
- Still having a gap with engagement and outreach to disability community.

Comp Plan Chapters

- Climate
- Natural Environment
- Parks, Arts & Recreation
- Land Use and Urban Design
- Public Safety
- Transportation
- Public Utilities
- Capital Facilities
- Economy

Questions

- Do you agree or disagree with the direction of the chapter?
- Why?
- Where do you notice gaps?
- What could be improved or strengthened?

Climate

An overarching climate strategy guides programs and policies pursued by the City. We will make measurable progress towards our goals.

Goals and policies will:

- Reduce Greenhouse Gas (GHG)
- Support Climate Resilience
- **Promote Environment Justice**
- Strengthen Institutional Capacity for Climate Action

Climate

An overarching climate strategy guides programs and policies pursued by the City. We will make measurable progress towards our goals.

GC3 All community members – especially those most affected by climate change – benefit from climate action and have equitable opportunities to influence policy decisions.

PC3.1 Conduct intentional outreach with frontline communities and youth to enable equitable engagement in the development and implementation of climate action and resilience initiatives.

PC3.2 Partner with community-based organizations to engage diverse groups in developing and implementing climate solutions while addressing existing disparities. Support these organizations in building capacity for climate action.

PC3.3 Provide guidance and resources, such as technical support, rebates and other incentives, to reduce barriers to climate action for all community members. Prioritize strategic investments to support frontline communities and address existing disparities in Olympia.

PC3.4 Evaluate and address unintended impacts of policies and programs for Olympians across all income levels.

Natural Environment and Parks, Arts & Recreation

Future climate conditions will threaten the natural composition, function, and relationships within our freshwater, marine, and forest environments.

Goals and policies will:

- Strengthen the Environment's Ability to Withstand Future Climate Conditions
- Ensure Parks are Resilient to Climate Impacts and Advance Climate Action
- Cultivate a Connection to Nature
- Foster Community Connection and Belonging

Land Use and Urban Design

Land use and urban design decisions will create denser, more walkable neighborhoods, support energy efficiency, and reduce exposure to climate hazards.

Goals and policies will:

- Plan for Density and Future Climate Conditions
- Adapt the Built Environment to Reduce GHG Emissions and Protect Public Health
- Promote Local Energy Infrastructure
- Enable the Transition to Electric Mobility

Housing and Public Safety

All Olympians must have access to affordable and safe housing. Our emergency preparedness and response can protect the health of those most vulnerable to climate-exacerbated events.

Goals and policies will:

- Address Housing and Climate Challenges Together
- Provide Stability and Services during Climate Emergencies
- Protect Public Health through Preparedness and Response

Transportation

Reducing vehicle miles traveled and emissions from vehicles are critical to meeting our net-zero goal. How we develop our transportation network will help us achieve this goal.

Goals and policies will:

- Make it Easier to Walk, Ride, Roll and Take Transit
- Support Electric Vehicle Adoption
- Prepare our Streets for Extreme Weather

Public Utilities and Capital Facilities

We must ensure our critical services – electricity, wastewater treatment, and drinking water systems— can withstand more extreme weather events. Our solid waste management can support Olympians in “living lighter”.

Goals and policies will:

- Support the Transition to a Zero-Waste City
- Reduce Flooding from Extreme Rainfall and Sea Level Rise
- Monitor and Protect Water Resources
- Secure the Energy Grid
- Make Climate-Smart Investments in Public Infrastructure

Economy

Olympia is preparing our local workforce and businesses to take climate action.

Goals and policies will:

- Develop a Climate-Smart Economy and Workforce
- Support Businesses in Preparing for Climate Impacts

Comp Plan Chapters

- Climate
- Natural Environment
- Parks, Arts & Recreation
- Land Use and Urban Design
- Public Safety
- Transportation
- Public Utilities
- Capital Facilities
- Economy

Questions

- Do you agree or disagree with the direction of the chapter?
- Why?
- Where do you notice gaps?
- What could be improved or strengthened?

Next Steps

- Gather and incorporate public feedback
- Formal review process
 - Social Justice and Equity Commission Briefing
 - Planning Commission Public Hearing
 - City Council Review and Acceptance
- Integrate climate goals and policies across chapters

Stay Informed

Subscribe to the Climate or Planning Newsletter:
www.olympiawa.gov/news

Visit our Webpage:
www.olympiawa.gov/Climate2045

Become a Party of Record by emailing:
olympia2045@ci.olympia.wa.us

Contact Information:

Pamela Braff, PhD
Director of Climate Programs
360.753.8249
pbraff@ci.Olympia.wa.us

Natalie Weiss
Climate Resilience Coordinator
360.570.5828
nweiss@ci.Olympia.wa.us

Jaron Burke
Climate Program Specialist
360.753.8429
jburke@ci.Olympia.wa.us