



LUEC September 21, 2017

Response Planning for Sea Level Rise



Sea Level Rise (SLR) Response Planning



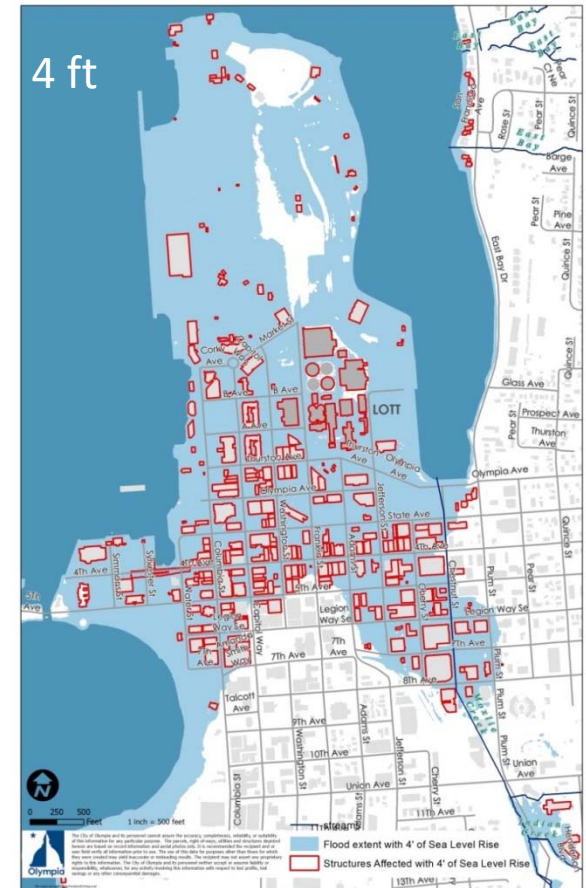
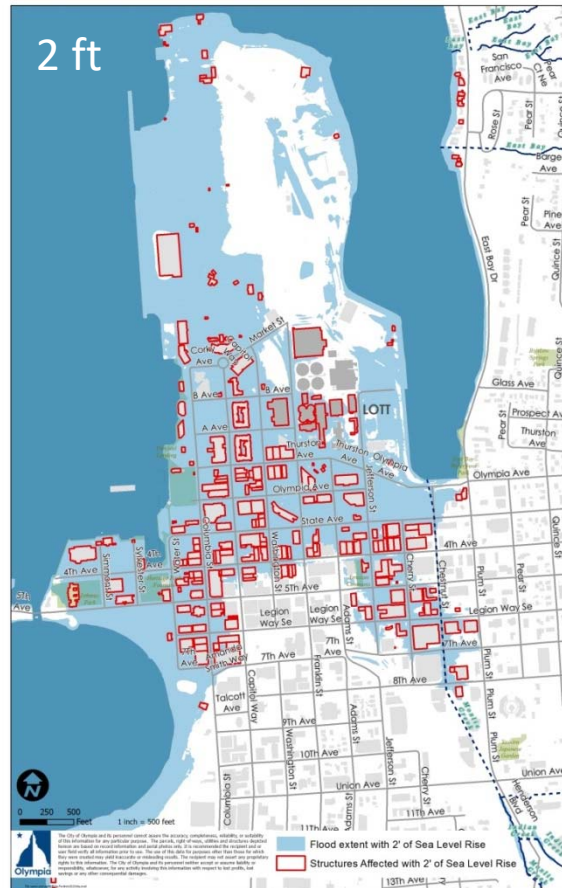
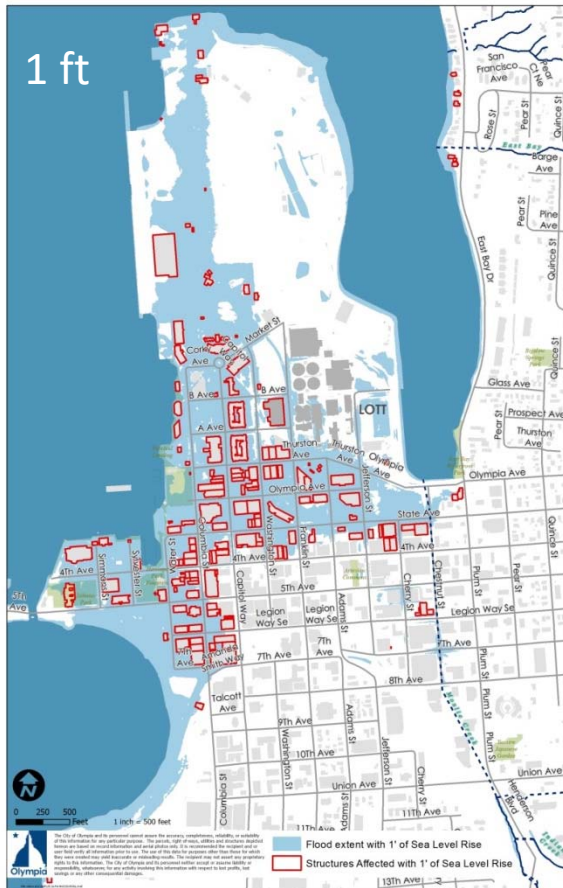
AECOM



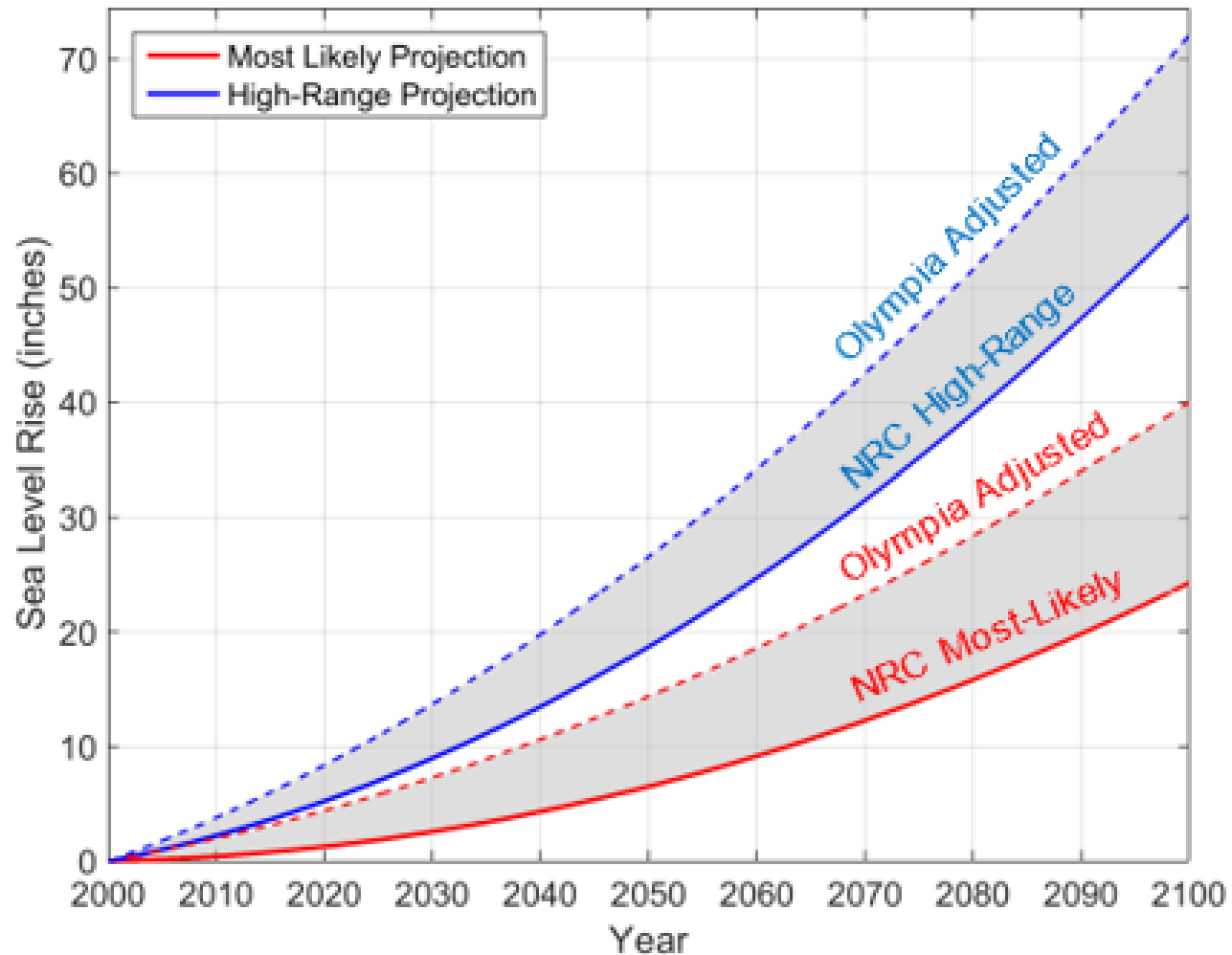
Developing a Response Plan



Olympia SLR Exposure



Sea Level Rise Projections for Olympia



The Plan

Goal: Develop a formal community plan that prioritizes strategies and investments for best responding to sea rise, while protecting downtown's economic, social and environmental values.

The plan will identify needed actions, estimated costs and resources, implementation schedules and responsibilities.

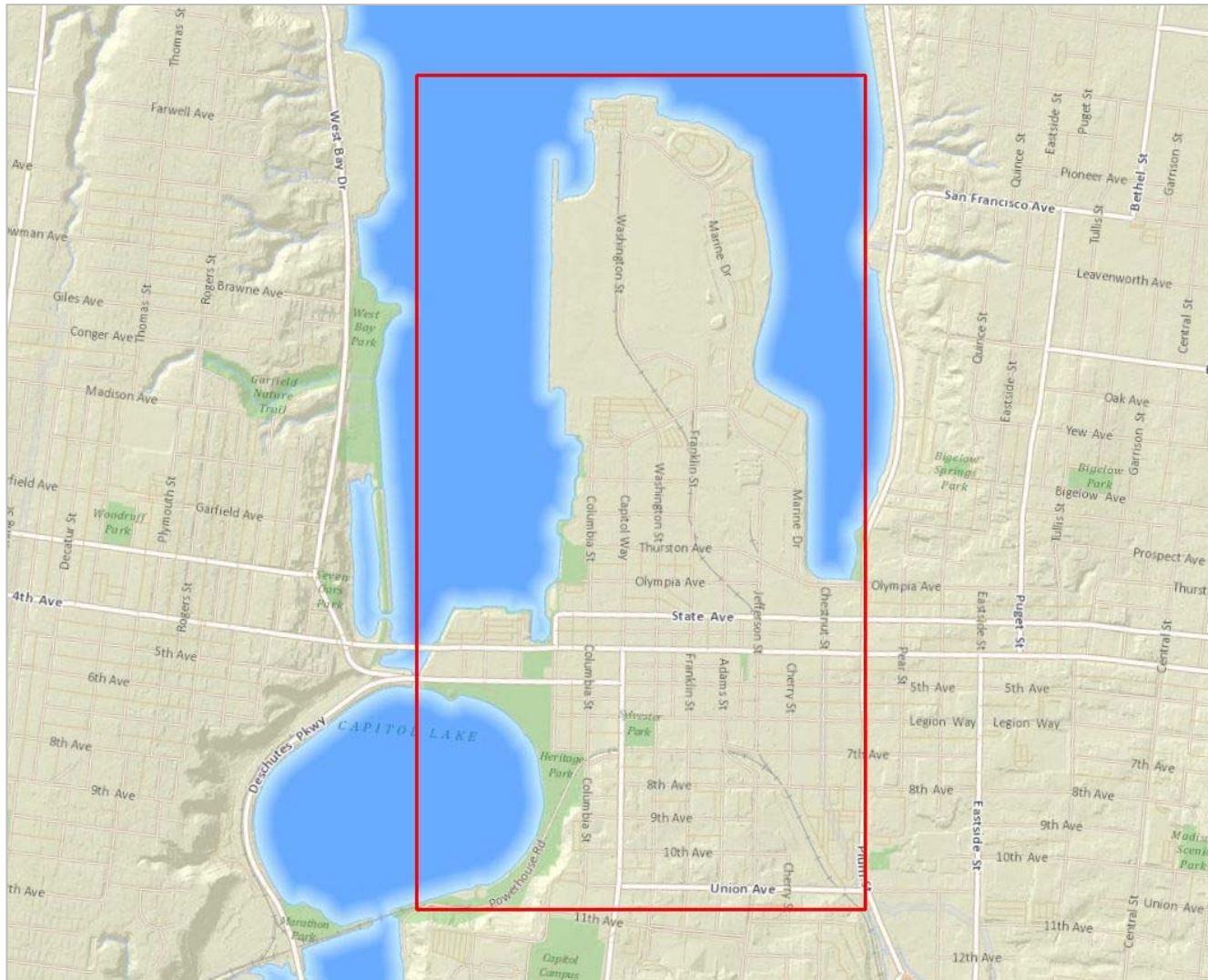


Olympia's Comprehensive Plan

The City uses best available information to implement a sea level rise management plan that will protect Olympia's downtown.

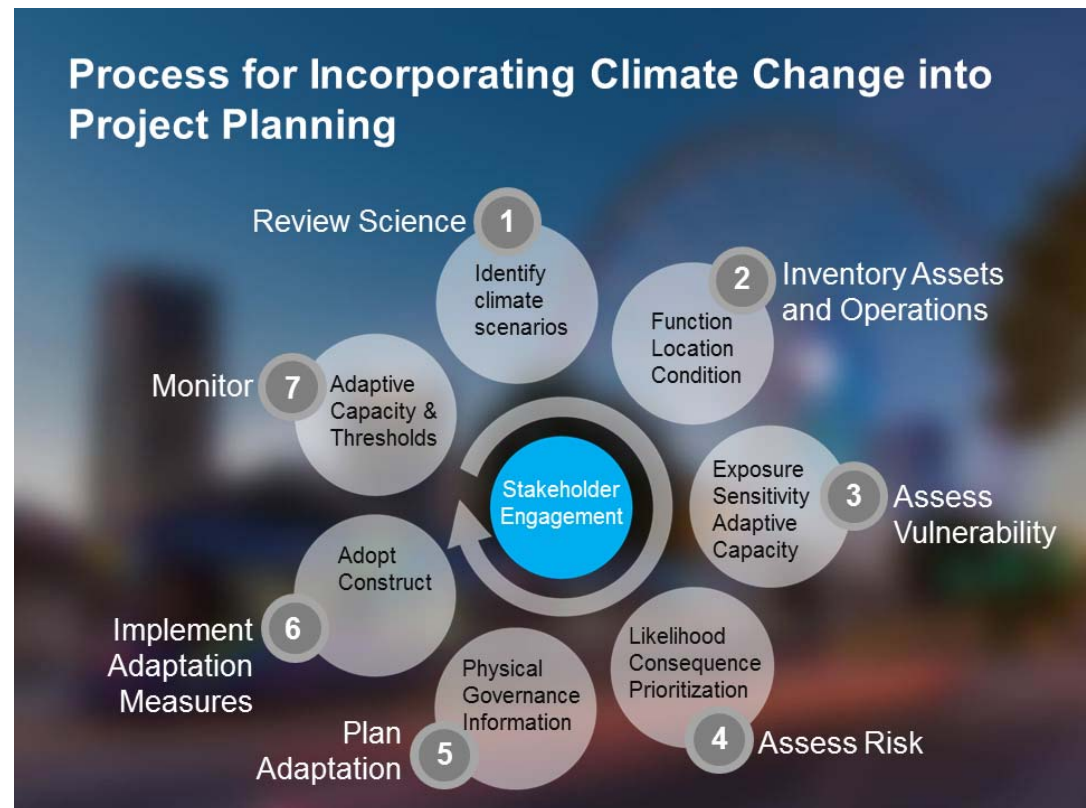
- Develop a robust sea level response plan
- Maintain public control of downtown shorelines
- Use best available science
- Partner with other governments and key stakeholders
- Engage the community
- Require development to incorporate response measures

The Area



Planning Process

1. Review Science
2. Inventory Assets and Operations
3. Assess Vulnerability
4. Assess Risk
5. Plan Adaptation
6. Implement Adaptation Measures
7. Monitor



What is a Vulnerability Assessment?

Vulnerability – the degree to which an asset, population, or system is susceptible to an unable to cope with adverse impacts of climate change

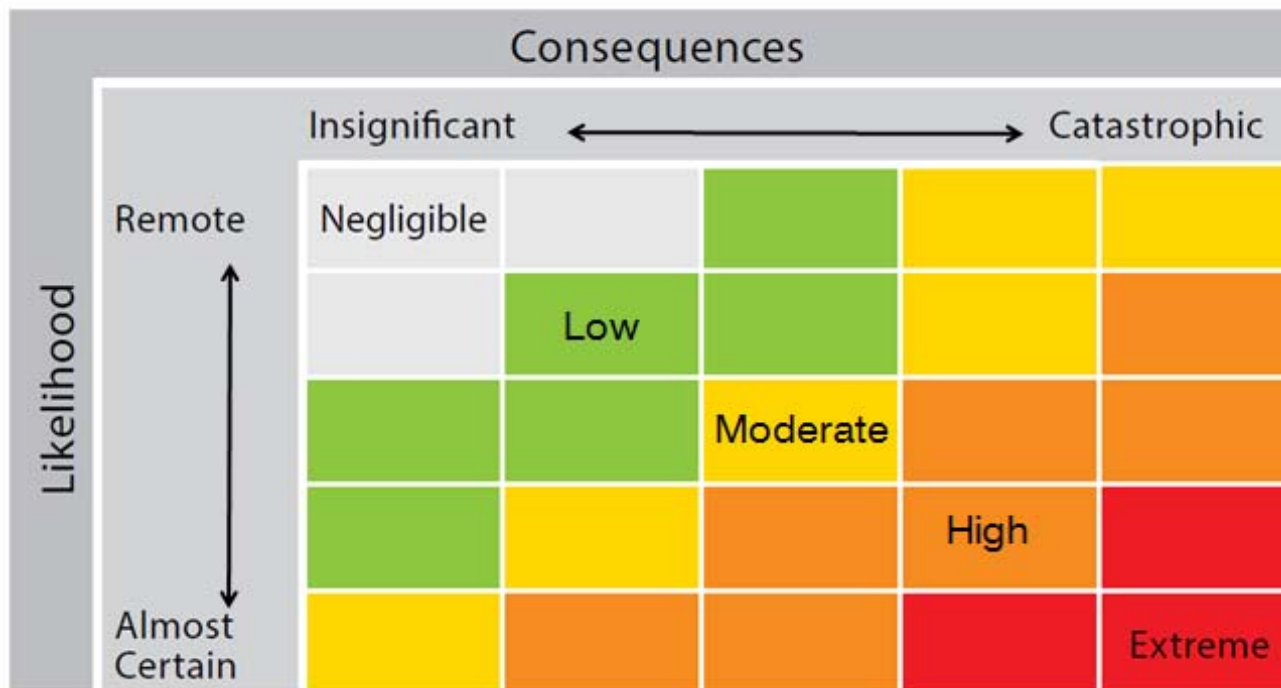
- **Exposure** – the degree to which an asset is exposed to flooding
- **Sensitivity** – the degree to which the condition or function is affected by flooding
- **Adaptive Capacity** – the ability of an asset to adapt to changing environmental conditions

V = Exposure + Sensitivity + Adaptive Capacity



What is a Risk Assessment?

Risk is a measure of impact that incorporates the *likelihood* of an event occurring and its *consequence*.



Damage
Disruption
Costs

Community Outreach

13 Group & Organization meetings to date

Three Workshops anticipated:

- November – Planning framework and vulnerability and risk
- January – Adaptation strategies input
- April – Draft adaptation strategies and plan





Response Planning for Sea Level Rise

Eric Christensen

360.570.3741

echriste@ci.olympia.wa.us

