

Public Workshop #1

Districts Mapping Exercise Results

November 21, 2015

- Missing numbers reflect empty tables at the event.
- We apologize that some detail is lost in these photographic images. Staff & consultants will refer to the actual maps for analysis.
- This input will be used to shape alternatives that will be presented to the public at Workshop #2.



ons

op "treasures" (existing assets downtown) with the star stickers provided.

Lines outline areas you think are or the "districts" (areas of distinct character). Give each district a name.

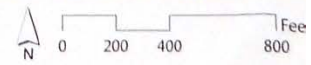
Part 2

- 4 Tape photos to the map to indicate the types of development you imagine for the different districts.

6 Describe in one sentence the big idea for your map. *We need skatepark. We think Olympia as a whole should be safe and more friendly for kids so that parents can be*

Major points of interest

- Downtown planning area
- City and State parks
- Public landmarks







Instructions

Part 1

1 Mark your four 'treasures' (existing assets) identified on the map with the star stickers provided

Major points of interest

Discussion planning area

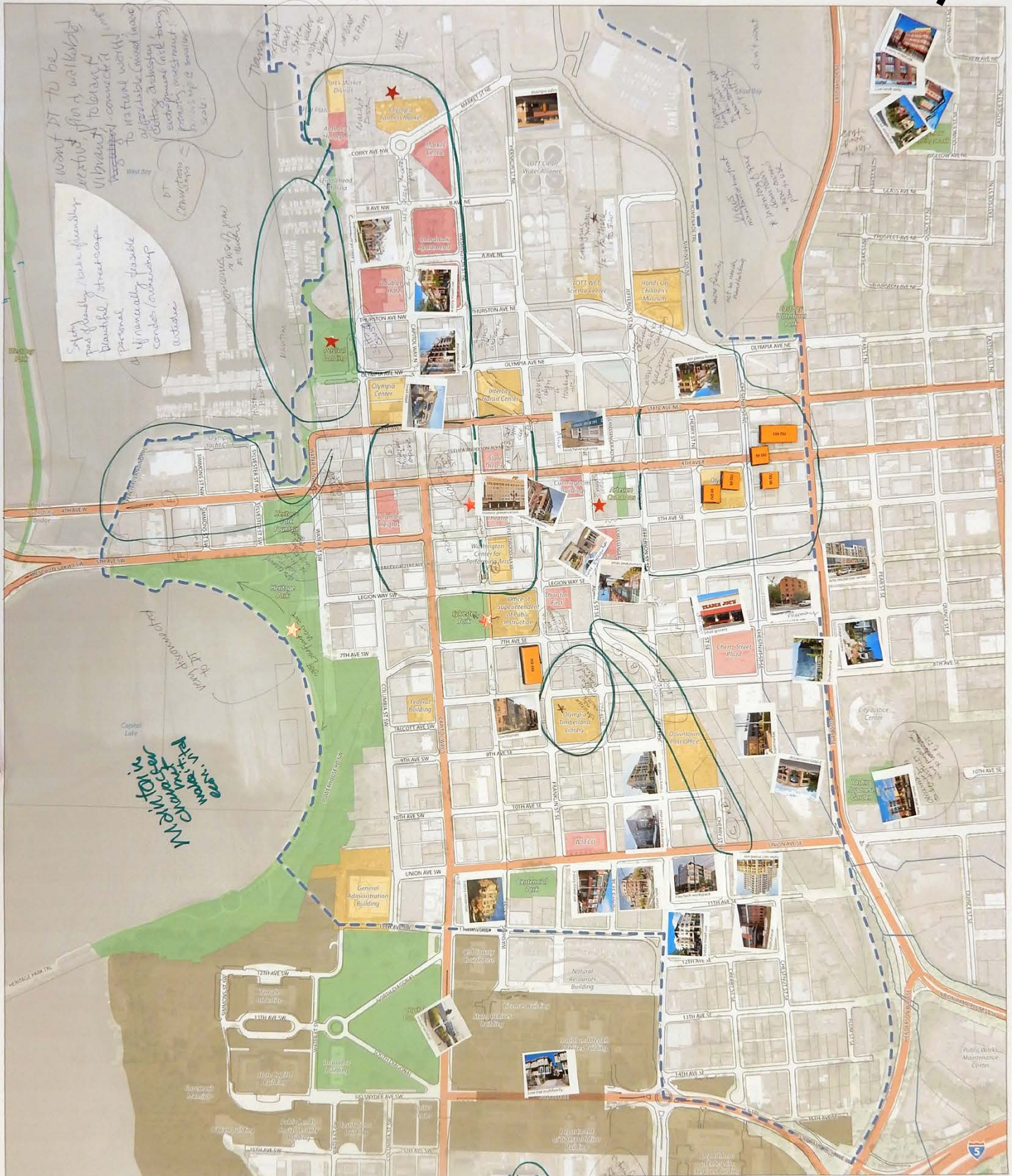
City and State parks



DOWNTOWN DISTRICTS

Public Workshop #1
Mapping Exercise Group #

7



Instructions

Part 1

- 1 Mark your top "treasures" (existing assets downtown) on the map with the star stickers provided.
- 2 On tracing paper, outline areas you think are or could become "districts" (areas of district character or function). Give each district a name, note its primary function, and describe its character. Transfer your final districts onto this base map.
- 3 On a second sheet of tracing paper, identify key streets and pedestrian connections. Indicate the

Part 2

- 4 Tape photos to the map to indicate the types of development you imagine for the different districts.
- 5 Place the residential development blocks on the map to identify where you think the allocated 5,000 people (approximately 2,500 former residents) will live.
- 6 Describe in one sentence the big idea for our map.

Major points of interest

- Downtown planning area
- City and State parks
- Public landmarks
- Private landmarks
- State Capitol Campus

TOWN DISTRICTS



Instructions

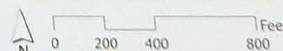
- Part 1**
1. Mark your top "treasures" (existing assets downtown) on the map with the star stickers provided.
 2. On tracing paper, outline areas you think are or could become "districts" (areas of distinct character or function). Give each district a name, note its primary function, and describe its character. Transfer your final districts onto this base map.
 3. On a second sheet of tracing paper, identify key streets and pedestrian connections. Indicate the desired street type with a letter keyed to the provided street type photos. Transfer your final streets to this base map.

Part 2

4. Tape photos to the map to indicate the types of development you imagine for the different districts.
5. Place the residential development blocks on the map to identify where you think the allocated 5,000 people (approximately 2,500 new housing units) should go.
6. Describe in one sentence the big idea for your map.

Major points of interest

- Downtown planning area
- City and State parks
- Public landmarks
- Private landmarks
- State Capitol Campus
- Major streets
- Streams



Olympia Downtown Strategy *Keith* DOWNTOWN DISTRICTS

Workshop #1
Exercise Group #:

9 (9)









Part 2

1. Tape photos to the map to indicate the types of development you imagine for the different districts.
2. Place the residential development blocks on the map to identify where you think the allocated 5,000 people (approximately)
3. Describe in one sentence the big idea for your map.

Major points of interest

- Downtown planning area
- City and State parks
- Public landmarks
- Private landmarks
- State Capitol Campus

0 200 400 800 Feet

Olympia Downtown Strategy DOWNTOWN DISTRICTS

November 21, 2015

Public Workshop #1
Mapping Exercise Group #:

15





Major points of interest



Instructions

Part 1

- 1 Mark your top "treasures" (existing assets downtown) on the map with the star stickers provided.
- 2 On tracing paper, outline areas you think are or could become "districts" (areas of distinct character or function). Give each district a name, note its primary function, and describe its character. Transfer your final districts onto this base map.
- 3 On a second sheet of tracing paper, identify key streets and pedestrian connections. Indicate the desired street type with a letter keyed to the provided street type photos. Transfer your final streets to this base map.

Part 2

- 4 Tape photos to the map to indicate the types of development you imagine for the different districts.
- 5 Place the residential development blocks on the map to identify where you think the allocated 5,500 people (approximately 2,500 new housing units) should go.
- 6 Describe in one sentence the big idea for your map.

Major points of interest

- City Parks
- Public landmarks
- Private landmarks
- State Capitol Campus
- Major streets
- Streams

0 200 400



Instructions

Part 1

- 1 Mark your top "treasures" (existing assets downtown) on the map with the star stickers provided.
- 2 On tracing paper, outline areas you think are or could become "districts" (areas of distinct character or function). Give each district a name, note its primary function, and describe its character. Transfer your final districts onto this base map.
- 3 On a second sheet of tracing paper, identify key streets and pedestrian connections. Indicate the desired street type with a letter keyed to the provided street type photos. Transfer your final streets to this base map.

Part 2

- 4 Tape photos to the map to indicate the types of development you imagine for the different districts.
- 5 Place the residential development blocks on the map to identify where you think the allocated 5,000 people (approximately 2,500 new housing units) should go.
- 6 Describe in one sentence the big idea for your map.

Major points of interest

- Downtown planning area
- City and State parks
- Public landmarks
- Private landmarks
- State Capitol Campus
- Major streets
- Streams





Instructions

- Part 1**
- 1 Mark your top "treasures" (building assets downtown) on the map with the star stickers provided.
 - 2 On tracing paper, outline areas you think are or could become "districts" (areas of distinct character or function). Give each district a name, note its primary function, and describe its character. Transfer your final districts onto this base map.
 - 3 On a second sheet of tracing paper, identify key streets and pedestrian connections. Indicate the desired street type with a letter keyed to the recorded street type photos. Transfer your final

Part 2

- 4 Tape photos to the map to indicate the types of development you imagine for the different districts.
- 5 Place the residential development blocks on the map to identify where you think the allocated 5,000 people (approximately 2,500 new housing units) should go.
- 6 Describe in one sentence the big idea for your map.

Major points of interest

- Downtown planning area
- City and State parks
- Public landmarks
- Private landmarks
- State Capitol Campus
- Major streets
- Streams

0 200 400 800 Feet

Handwritten note: *Handwritten note: 14,000 use (Highway, pedestrian, service, low light, infrastructure, both) pedestrian and bike oriented areas.*





Instructions

Part 1

- Mark your top "treasures" (existing assets downtown) on the map with the star stickers provided.
- On tracing paper, outline areas you think are or could become "districts" (areas of distinct character or function). Give each district a name, note its primary function, and describe its character.

Part 2

- Tape photos to the map to indicate the types of development you imagine for the different districts.
- Place the residential development blocks on the map to identify where you
- Distribute in one sentence the big idea for your map: *improve commerce/waterfront/cultural with an integration of available housing to strengthen each.*

Legend

- City and State Parks
- Public Landmarks
- Private Landmarks





Instructions
Part 1

Part 2

Major points of interest

Feet

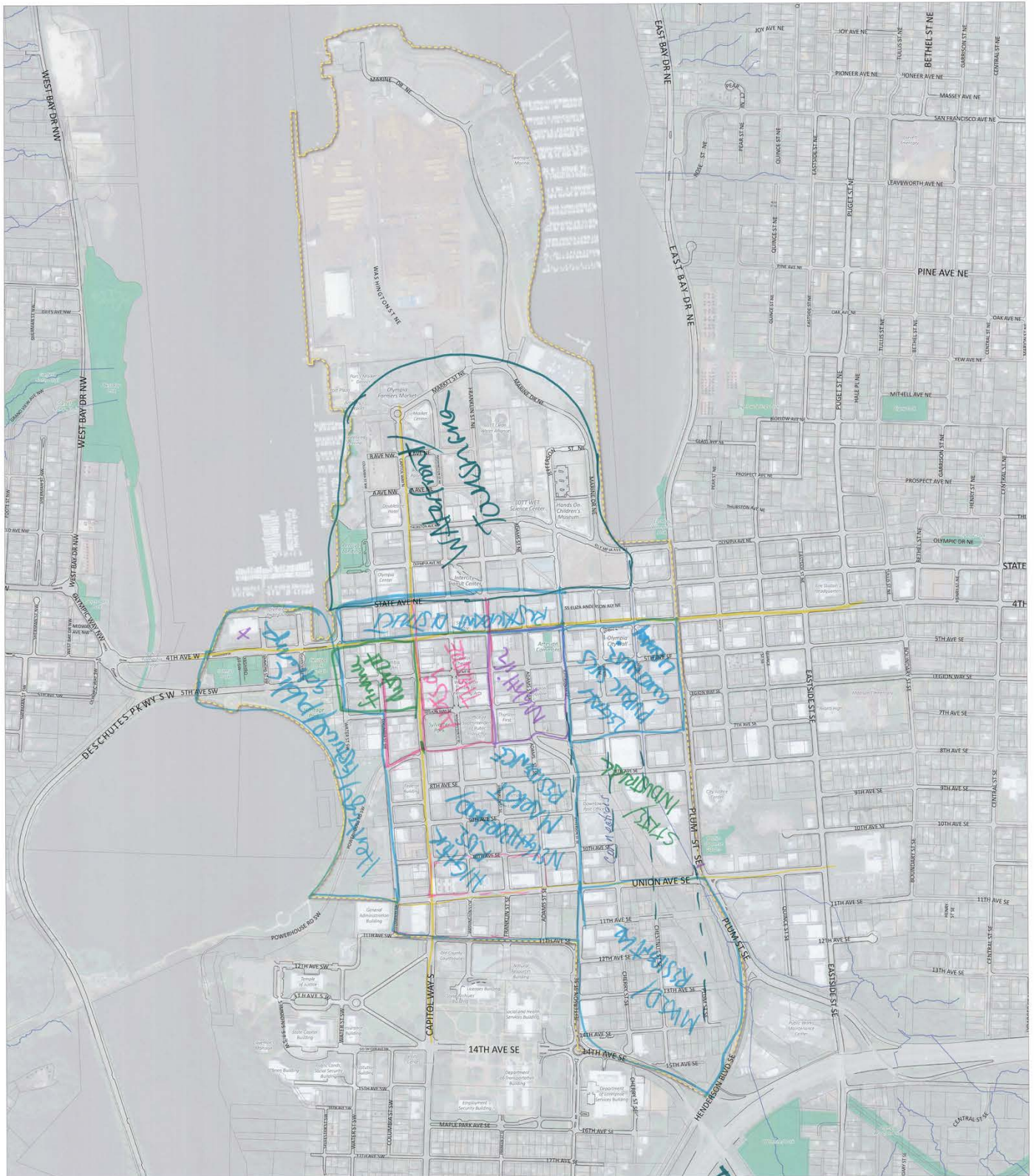
Stakeholder Work Group **Districts Mapping Exercise Results**

November 4, 2015

Olympia Downtown Strategy

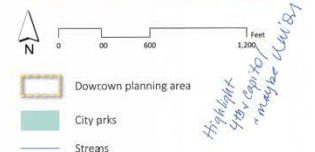
DOWNTOWN DISTRICTS

November 4, 2015
Stakeholder Work Group
 Mapping Exercise



Instructions

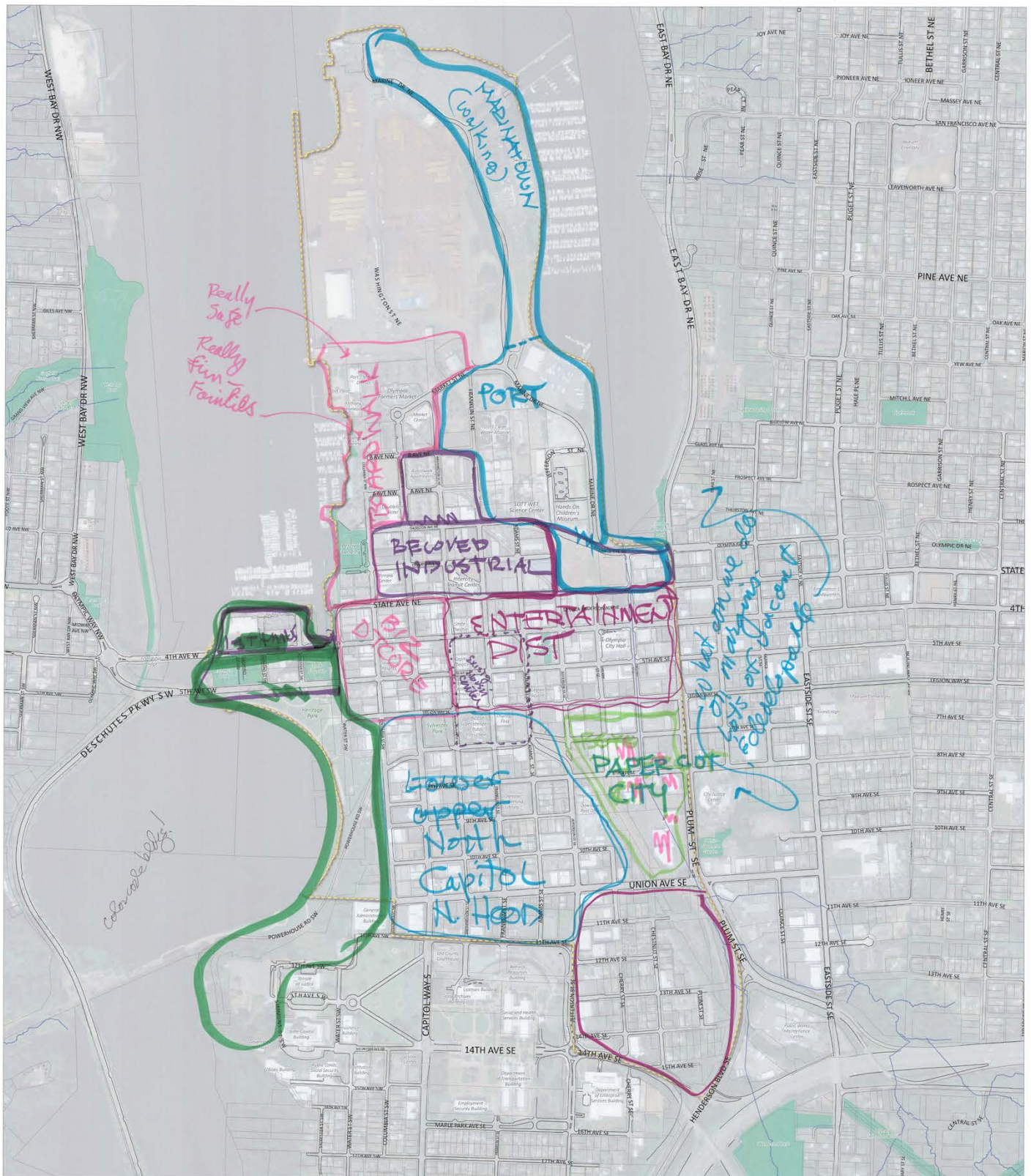
1. Outline areas you think are or could become "districts" (areas of distinct character or function).
2. Give each district a name.
3. Describe the function and character of each district, as well as how it might develop over time.



Olympia Downtown Strategy

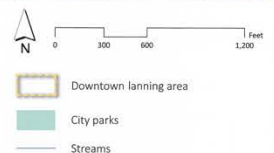
DOWNTOWN DISTRICTS

November 4, 2015
Stakeholder Work Group
 Mapping Exercise



Instructions

1. Outline areas you think are or could become "districts" (areas of distinct character or function).
2. Give each district a name.
3. Describe the function and character of each district, as well as how it might develop over time.

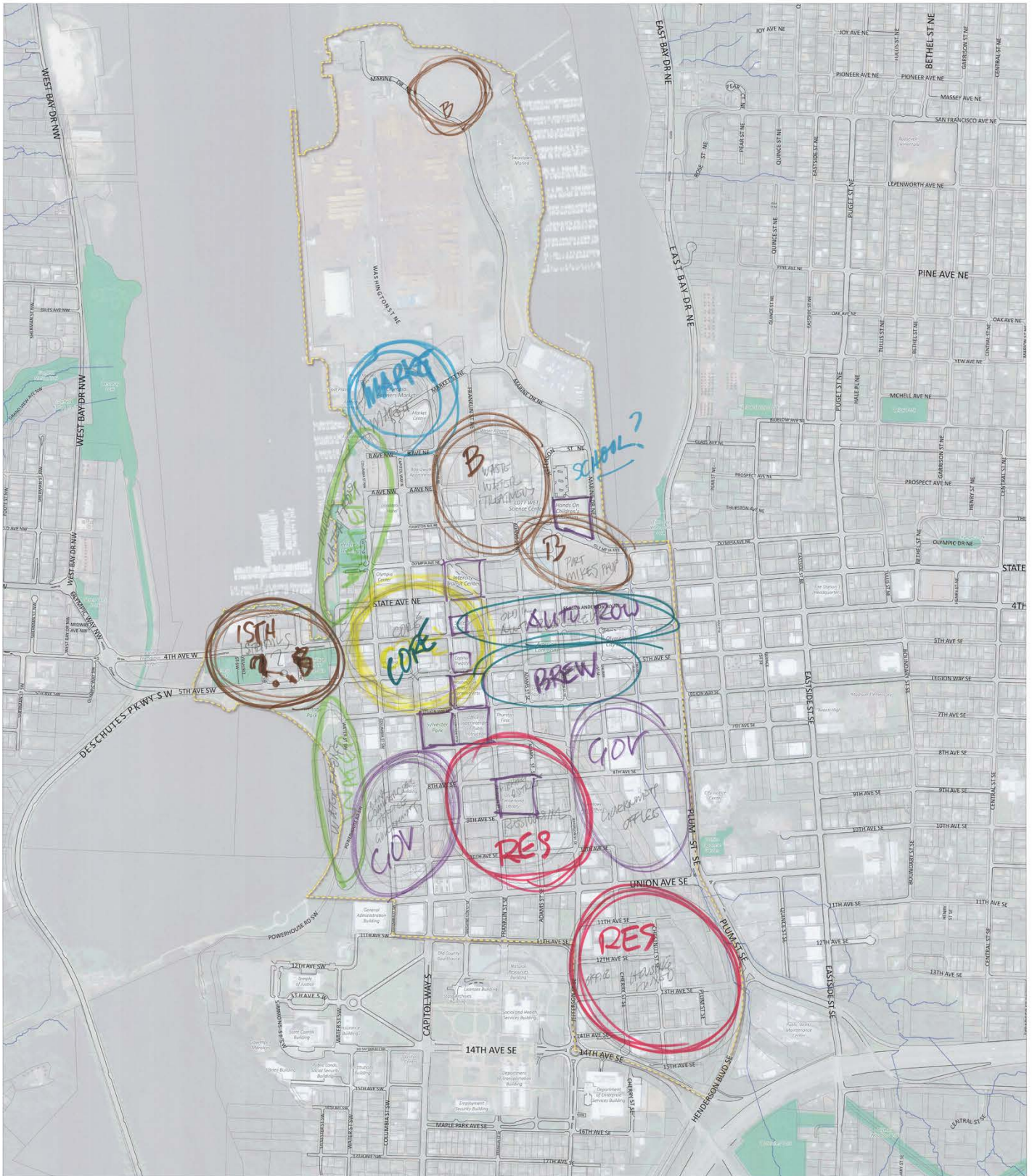


Olympia Downtown Strategy

DOWNTOWN DISTRICTS

B = + Baurne 16"

November 4, 2015
Stakeholder Work Group
Mapping Exercise



Instructions

1. Outline areas you think are or could become "districts" (areas of distinct character or function).
2. Give each district a name.
3. Describe the function and character of each district, as well as how it might develop over time.

PETER'S PALS



Olympia Downtown Strategy

DOWNTOWN DISTRICTS

November 4, 2015
Stakeholder Work Group
 Mapping Exercise



Instructions

1. Outline areas you think are or could become "districts" (areas of distinct character or function).
2. Give each district a name.
3. Describe the function and character of each district, as well as how it might develop over time.

