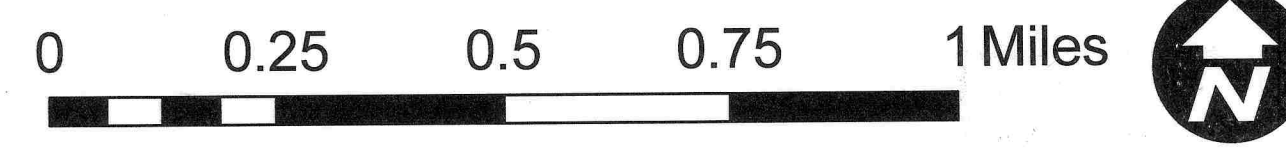


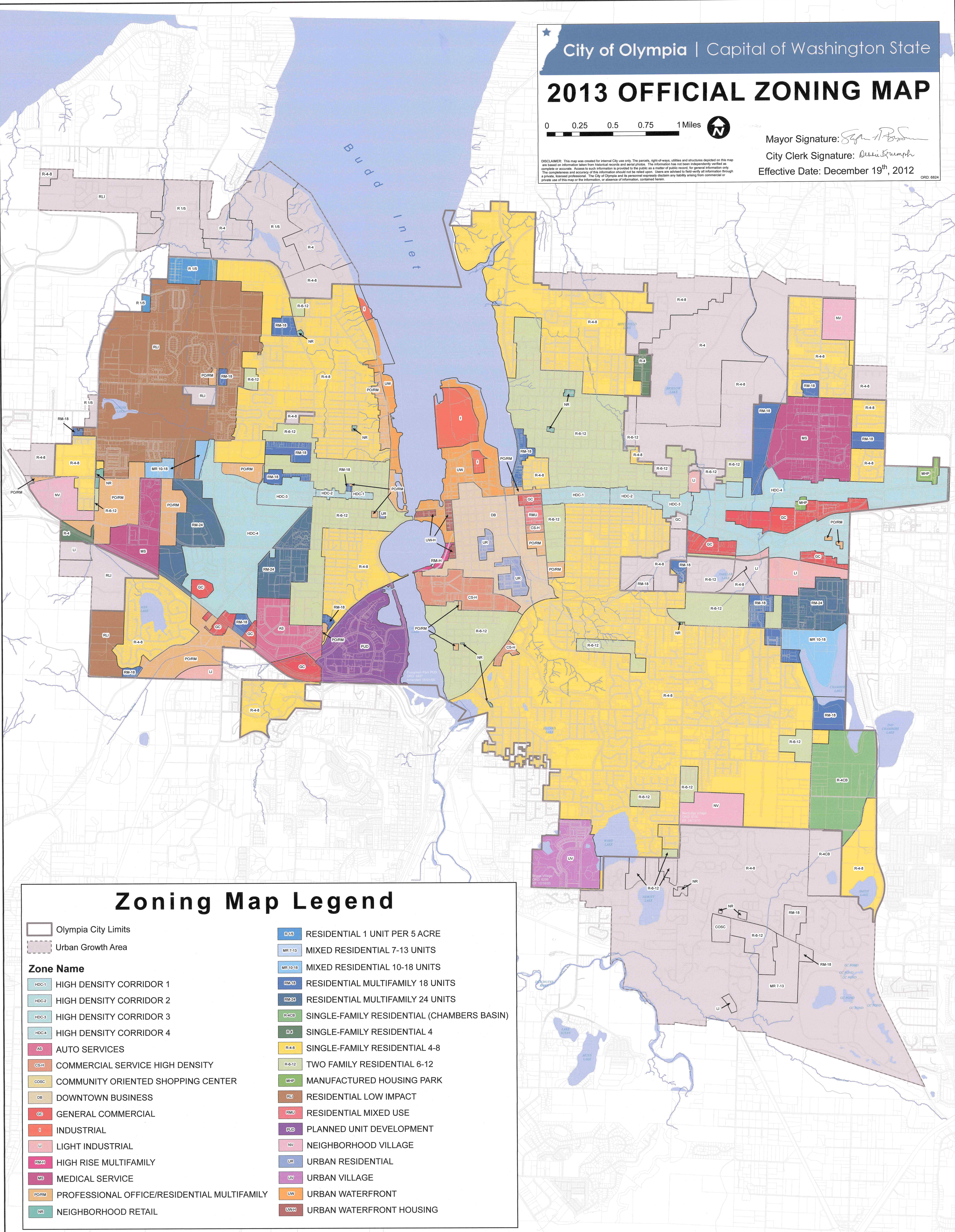
2013 OFFICIAL ZONING MAP



Mayor Signature: *Seana Johnson*
 City Clerk Signature: *Debbie Krumpholtz*
 Effective Date: December 19th, 2012

DISCLAIMER: This map was created for internal City use only. The parcels, right-of-ways, utilities and structures depicted on this map are based on information taken from historical records and aerial photos. The information has not been independently verified as complete or accurate. Access to such information is provided to the public as a matter of public record for general information only. The completeness and accuracy of this information should not be relied upon. Users are advised to field-verify all information through a private licensed professional. The City of Olympia and its personnel expressly disclaim any liability arising from commercial or private use of this map or the information, or absence of information, contained herein.

ORD. 6824



Zoning Map Legend

	Olympia City Limits		R-15 RESIDENTIAL 1 UNIT PER 5 ACRE
	Urban Growth Area		MR 7-13 MIXED RESIDENTIAL 7-13 UNITS
Zone Name			
	HDC-1 HIGH DENSITY CORRIDOR 1		RM-18 RESIDENTIAL MULTIFAMILY 18 UNITS
	HDC-2 HIGH DENSITY CORRIDOR 2		RM-24 RESIDENTIAL MULTIFAMILY 24 UNITS
	HDC-3 HIGH DENSITY CORRIDOR 3		R-4CB SINGLE-FAMILY RESIDENTIAL (CHAMBERS BASIN)
	HDC-4 HIGH DENSITY CORRIDOR 4		R-4 SINGLE-FAMILY RESIDENTIAL 4
	AS AUTO SERVICES		R-4-8 SINGLE-FAMILY RESIDENTIAL 4-8
	CS-H COMMERCIAL SERVICE HIGH DENSITY		R-6-12 TWO FAMILY RESIDENTIAL 6-12
	COSC COMMUNITY ORIENTED SHOPPING CENTER		MHP MANUFACTURED HOUSING PARK
	DB DOWNTOWN BUSINESS		RLI RESIDENTIAL LOW IMPACT
	GC GENERAL COMMERCIAL		RMU RESIDENTIAL MIXED USE
	I INDUSTRIAL		PUD PLANNED UNIT DEVELOPMENT
	LI LIGHT INDUSTRIAL		NV NEIGHBORHOOD VILLAGE
	RM-H HIGH RISE MULTIFAMILY		UR URBAN RESIDENTIAL
	MS MEDICAL SERVICE		UV URBAN VILLAGE
	PORM PROFESSIONAL OFFICE/RESIDENTIAL MULTIFAMILY		UW URBAN WATERFRONT
	NR NEIGHBORHOOD RETAIL		UWH URBAN WATERFRONT HOUSING