

October 19<sup>th</sup>, 2021



# Emergency Management 101

- For Elected Officials

# Emergency Management In Olympia

## Mission

- To maintain a resilient community in the City of Olympia by empowering citizens and staff to mitigate hazards and prepare for, respond to, and recover from emergencies and disasters.

## Primary Objectives

- Maintain the Emergency Operations Center and Comprehensive Emergency Management Plan.
- Conduct citizen/community outreach with an emphasis on neighborhoods.
- Provide planning support, training, and exercise for city staff/departments.
  - [Severe Weather Tabletop discussion tomorrow.](#)

# Emergency Operations Center

Resource Management, Coordination, Financial Tracking, Public Information and Warning

- Brings together the Doers, Thinkers, Getters, Payers

Situational Awareness

- Ex. Earthquake: damages, resource needs
- Ex. Covid-19: Disease progression, CDC/DOH guidance, vaccine development, interjurisdictional coordination, etc.



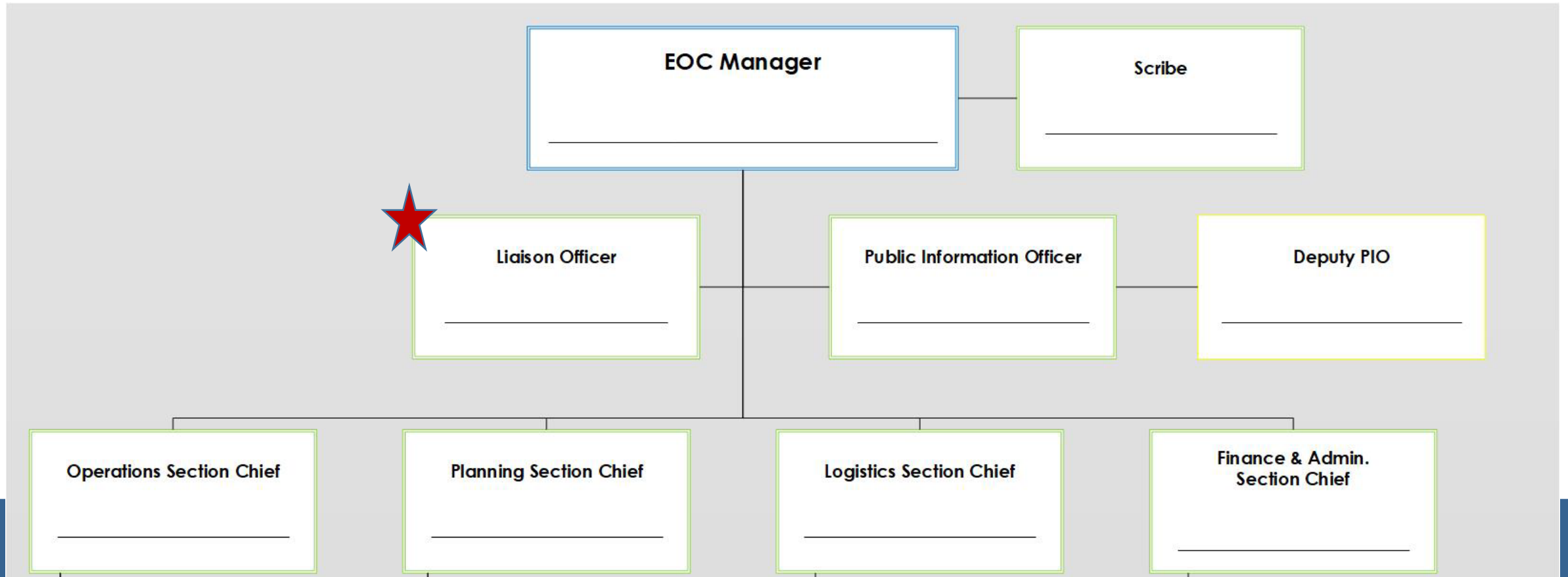
# Emergency Operations Center

When does the EOC activate?

- When normal/emergency operations are overwhelmed by the incident/event requiring support/coordination with other jurisdictions.
- When requested by senior leadership or first responders.



# “Stay In Your Box”



# The Elected Official's Role: Before

## Policy and Budget decisions that Support Mitigation and Preparedness

- Staffing
- Review and promulgate plans
- Public Education
- Infrastructure investments
- Training and Exercise
- Equipment

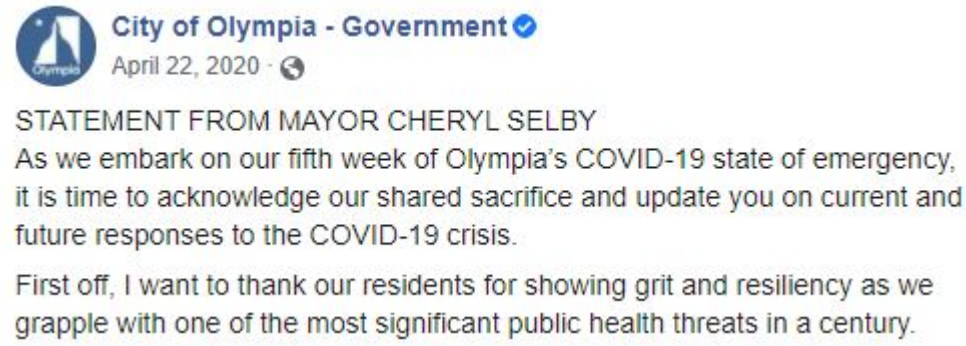


# The Elected Official's Role: During

Engage the Community

Guide and make Policy decisions

- Eviction moratoriums, emergency sheltering, budget appropriations, suspending fees, etc.



# The Elected Official's Role: After

Guiding the Recovery Process: Thurston Region Disaster Recovery Framework





# When does the Federal Government Help?

## Public Assistance - Threshold for **Eligibility**

- Washington \$10,000,000 and Thurston \$1,000,000
- Repairing Infrastructure and Emergency Work
- Ex. 2020 February Storm vs 2019 Snow-Pocalypse

## Individual Assistance - Narrative

- Homes, Private Property, Other losses

CARES Act, American Rescue Plan Act



# When/Why do we make a declaration?

Is Olympia able to respond effectively within current (non-emergency) authorities?

Will the declaration/proclamation provide additional resources and/or authorities to respond?

Is the declaration/proclamation necessary to receive additional resources at the state or federal level?


If the answers are yes/no/no, is the situation severe enough that a public statement declaring an emergency is warranted?


# Winter Weather Outlook

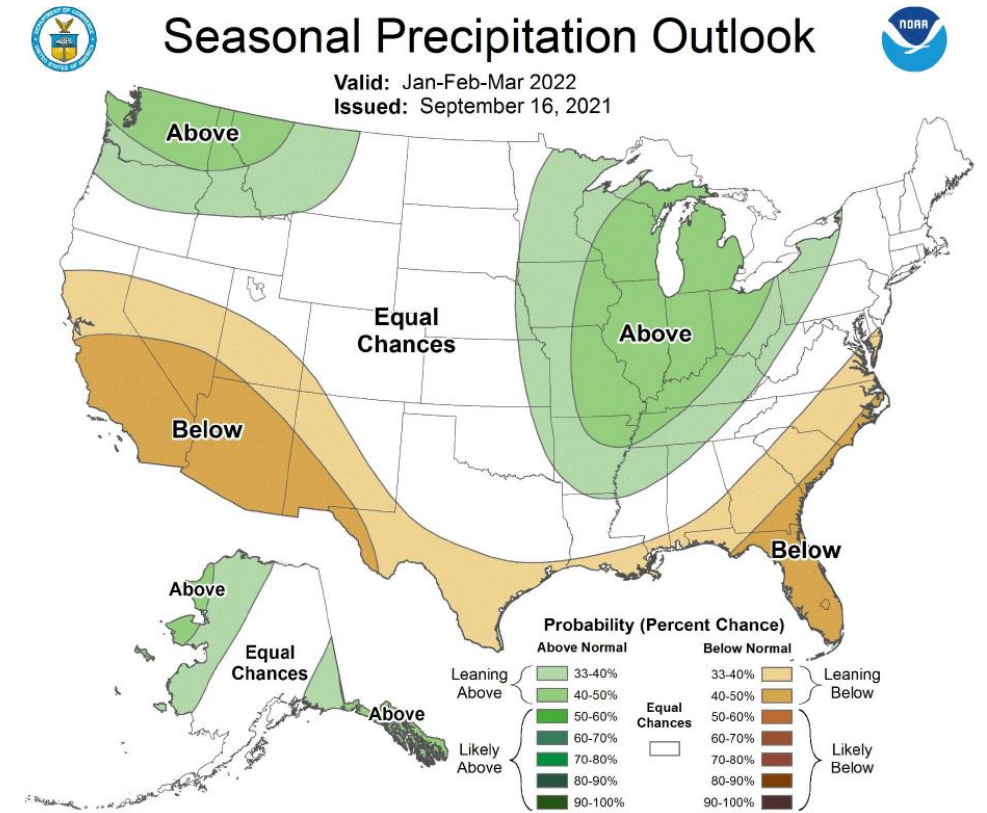
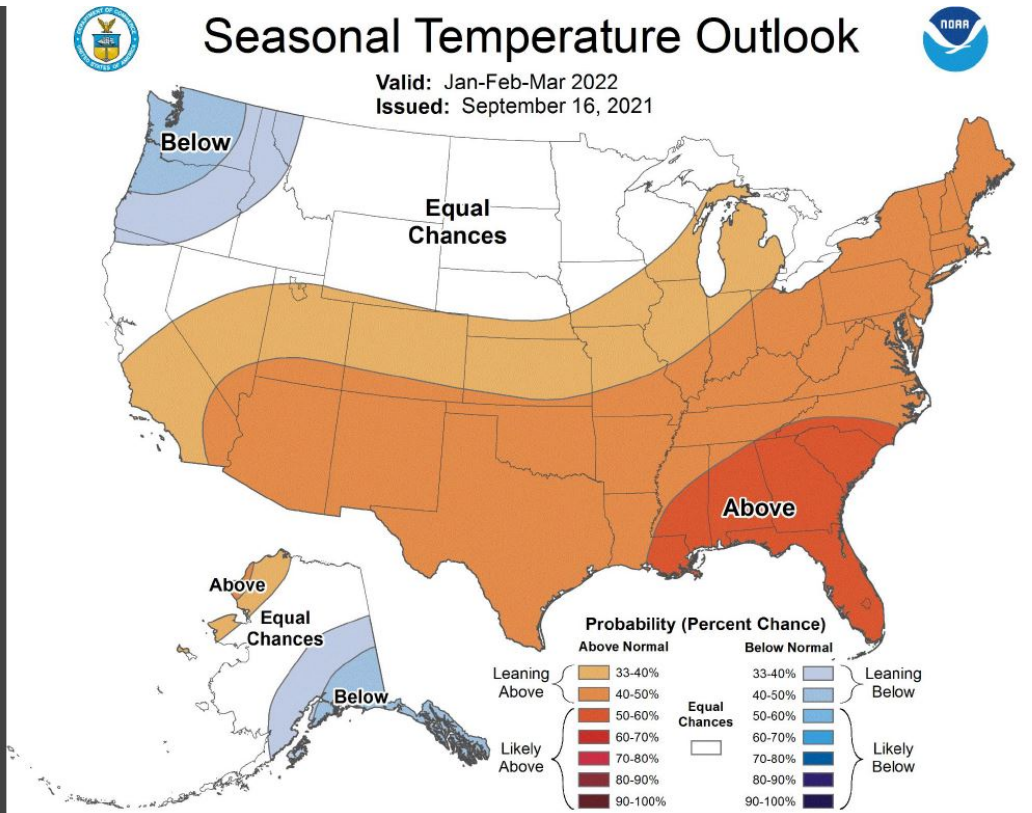
There is a 70-80% chance of La Nina continuing through winter 2021-2022.

La Nina is typically associated with cooler and wetter than average conditions.

**Jan - Feb - Mar**  
Outlook Favors

  
**Precipitation**  
Leaning Above

  
**Temperatures**  
Leaning Below



# When it Snows...

- Emergency Management receives briefings from the National Weather Service.
- Transportation, Homeless response, Parks and other key stake holders are notified and prepare.
- If necessary, the EOC is activated to support operations, inform city council, staff, and public, and document for potential reimbursement.
- Conduct After Action Review.





Thank you!