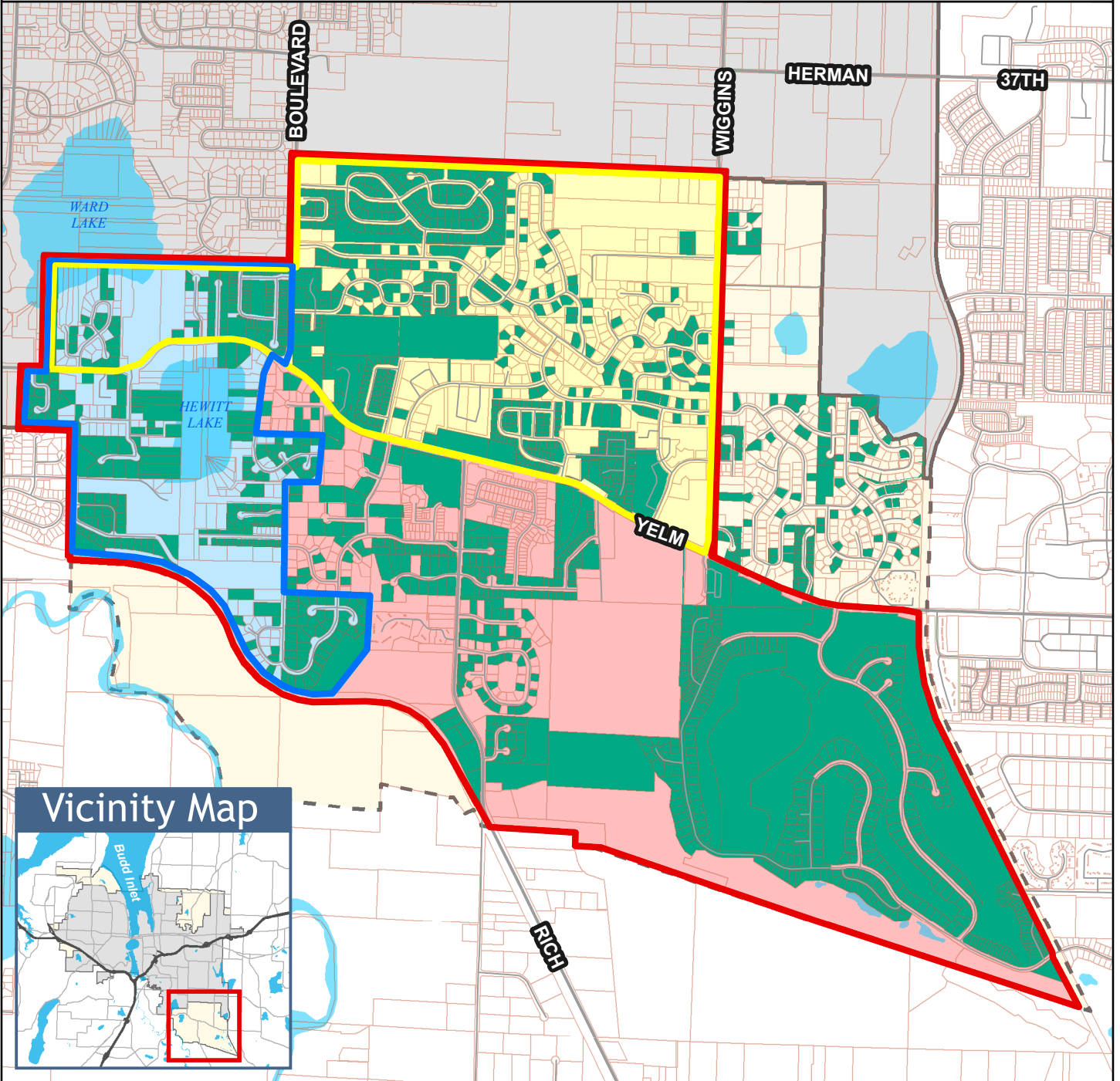


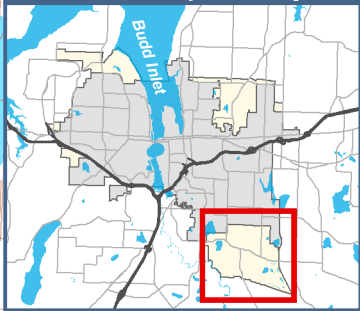


# Southeast (Yelm Highway) Annexation Study Area

Map printed 11/28/2016  
For more information, please contact:  
Tim Smith, Principal Planner  
tsmith@ci.olympia.wa.us - 360.570.3915



## Vicinity Map



City Limits   
 UGA   
 Parcels   
 Annexation Commitments

### Possible Annexation Areas

Southeast - Yelm Hwy N.	Southeast - Hewitt Lake	Southeast - Yelm Hwy (North & South)
Commitment - Assessed Value: \$201,980,050 Total - Assessed Value: \$327,002,200 Percent Committed: 61.8% Estimated Population: 3273 Total Housing Units: 1309 Total Acres: 474.3	Commitment - Assessed Value: \$82,580,350 Total - Assessed Value: \$139,867,650 Percent Committed: 59.0% Estimated Population: 1093 Total Housing Units: 437 Total Acres: 239.7	Commitment - Assessed Value: \$508,559,050 Total - Assessed Value: \$769,078,660 Percent Committed: 66.1% Estimated Population: 6360 Total Housing Units: 2544 Total Acres: 2596

This map is intended for 8.5x11" portrait printing.

The City of Olympia and its personnel cannot assure the accuracy, completeness, reliability, or suitability of this information for any particular purpose. The parcels, right-of-ways, utilities and structures depicted hereon are based on record information and aerial photos only. It is recommended the recipient and or user field verify all information prior to use. The use of this data for purposes other than those for which they were created may yield inaccurate or misleading results. The recipient may not assert any proprietary rights to this information. The City of Olympia and its personnel neither accept or assume liability or responsibility, whatsoever, for any activity involving this information with respect to lost profits, lost savings or any other consequential damages.

1 inch = 1,825 feet

