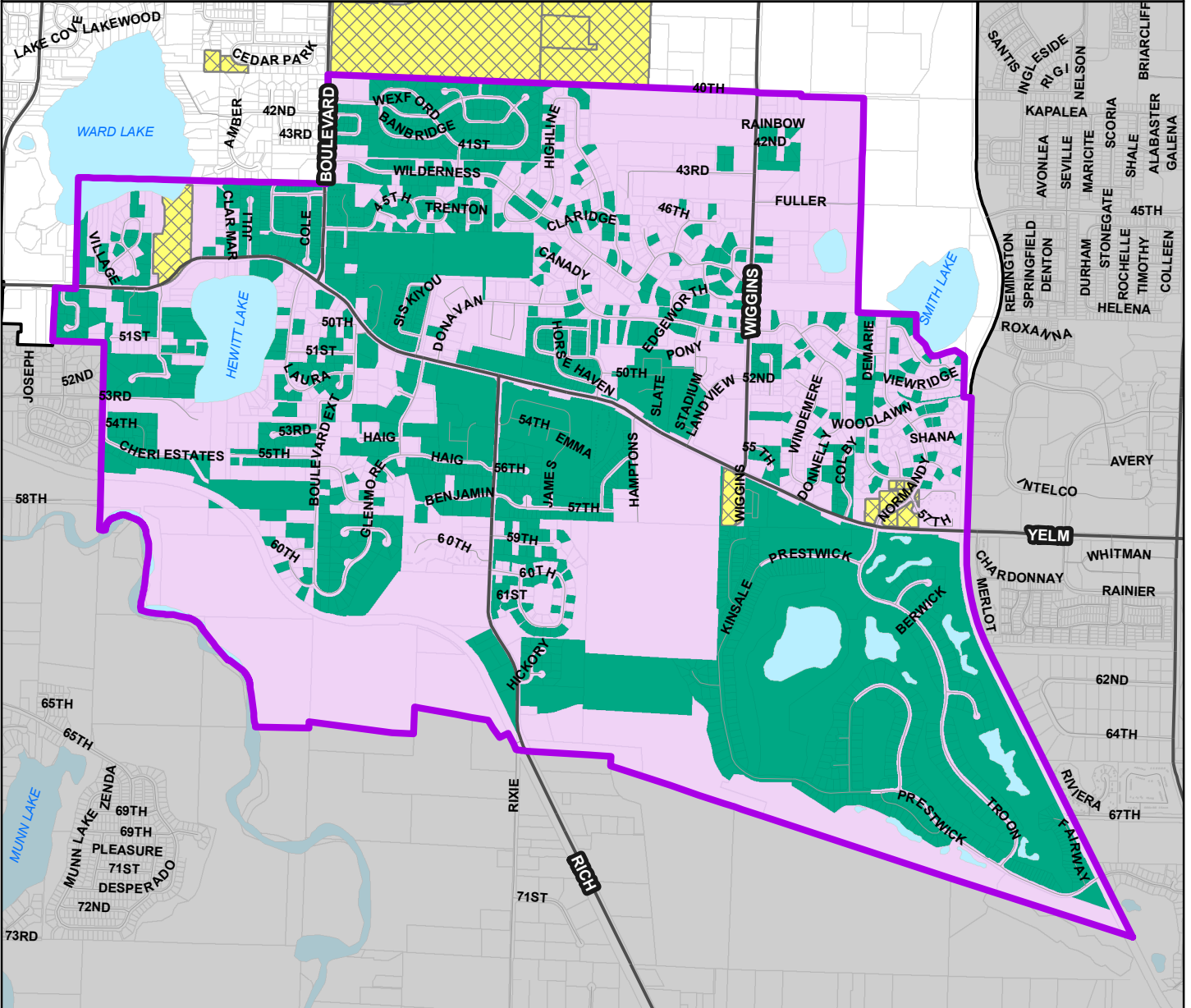


Annexation Study Area Southeast

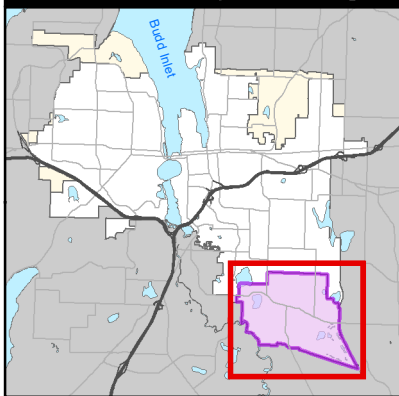


Possible Annexation Area

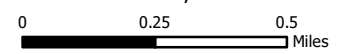
	Southeast
Total Value of Land with Annexation Commitments - \$695,826,700	
Total Value of All Land - \$942,376,440	
Percent of Land Value - 73.8%	
Total Housing Units - 2,973 Units	
Estimated Population - 7,433 People	
Total Acres - 1,879.7 Acres	

- City Limits
- UGA
- Thurston County
- Parcels
- City Owned
- Commitments

Vicinity Map



1 inch = 1,917 feet



This map is intended for 8.5x11" portrait printing.

The City of Olympia and its personnel cannot assure the accuracy, completeness, reliability, or suitability of this information for any particular purpose. The parcels, right-of-ways, utilities and structures depicted hereon are based on record information and aerial photos only. It is recommended the recipient and/or user field verify all information prior to use. The use of this data for purposes other than those for which they were created may yield inaccurate or misleading results. The recipient may not assert any proprietary rights to this information. The City of Olympia and its personnel neither accept or assume liability or responsibility, whatsoever, for any activity involving this information with respect to lost profits, lost savings or any other consequential damages.