

RESOLUTION NO. _____

A RESOLUTION OF THE CITY COUNCIL OF THE CITY OF OLYMPIA, WASHINGTON, TRANSFERRING PRIMARY MANAGEMENT AND CONTROL OF CERTAIN CITY-OWNED PROPERTIES FROM THE PUBLIC WORKS DEPARTMENT TO THE OLYMPIA PARKS, ARTS, AND RECREATION DEPARTMENT AND OUTLINING A COOPERATIVE PARTNERSHIP AGREEMENT FOR PROPERTY MANAGEMENT BETWEEN SAID DEPARTMENTS

WHEREAS, the City of Olympia has acquired multiple properties for utility purposes, such as stormwater management, water quality protection, habitat restoration and enhancement, and groundwater protection; and

WHEREAS, the properties are known as Black Lake Meadows, Taylor Wetlands, Indian Creek, and Yauger Wetland (the Properties); and

WHEREAS, the Properties are currently managed and controlled by the City’s Public Works Water Resources, Stormwater/Wastewater Operations (the Utility); and

WHEREAS, the Olympia Parks, Arts and Recreation Department (OPARD) has established open space and recreation level of service goals to meet the needs of Olympia’s growing community; and

WHEREAS, the Utility desires to enter into an agreement to transfer primary management and control of the Properties to OPARD; and

WHEREAS, OPARD has agreed to accept primary management and control of the Properties; and

WHEREAS, cooperative partnership between the two departments on property and habitat management is cost effective and adds value to Olympia residents by accomplishing multiple goals; and

WHEREAS, adding the Properties to the City’s Park inventory will expand approximately 98 acres of public open space and recreation opportunities for Olympia residents; and

WHEREAS, the Properties will continue to be managed in a manner consistent with Public Works’ goals to protect, enhance, and restore aquatic habitat functions provided by wetlands, streams, lakes, marine shorelines, and riparian areas; and groundwater quality is protected to ensure clean drinking water for present and future generations and to avoid the need for expensive replacement or treatment facilities; and

WHEREAS, the Utility and OPARD will continue to collaborate on habitat restoration and enhancement consistent with the Charter for Habitat Enhancement Efforts on Parks-Managed Properties; and

WHEREAS, the Utility will continue to operate and maintain the utility functions and habitat on the properties and OPARD will manage public access and recreation functions; and

NOW, THEREFORE, THE OLYMPIA CITY COUNCIL DOES HEREBY RESOLVE as follows:

1. Effective immediately, the primary management and control of properties owned by the City of Olympia and known as Black Lake Meadows, Taylor Wetlands, Indian Creek, and Yauger Wetland (as shown in Exhibit A attached hereto) are hereby transferred to the City's Parks inventory.
2. The City Council hereby directs the Directors of the Public Works and Olympia Parks, Arts and Recreation Departments to develop a memorandum of understanding that outlines a shared management and operation plan for the City-owned Properties consistent with this Resolution.

PASSED BY THE OLYMPIA CITY COUNCIL this _____ day of _____ 2021.

MAYOR

ATTEST:

CITY CLERK

APPROVED AS TO FORM:



DEPUTY CITY ATTORNEY

EXHIBIT A



Black Lake Meadows Property

Tax Parcels 12821340000, 12821330100, and 12821330300 - 45.02 acres



Vicinity Map



0 245 490 Feet 1 inch = 500 feet

This map is intended for 8.5x11" portrait printing.

The City of Olympia and its personnel cannot assure the accuracy, completeness, reliability, or suitability of this information for any particular purpose. The parcels, right-of-ways, utilities and structures depicted herein are based on record information and aerial photos only. It is recommended the recipient and/or user field verify all information prior to use. The use of this data for purposes other than those for which they were created may yield inaccurate or misleading results. The recipient may not assert any proprietary rights to this information. The City of Olympia and its personnel neither accept or assume liability or responsibility, whatsoever, for any activity involving this information with respect to lost profits, lost savings or any other consequential damages.

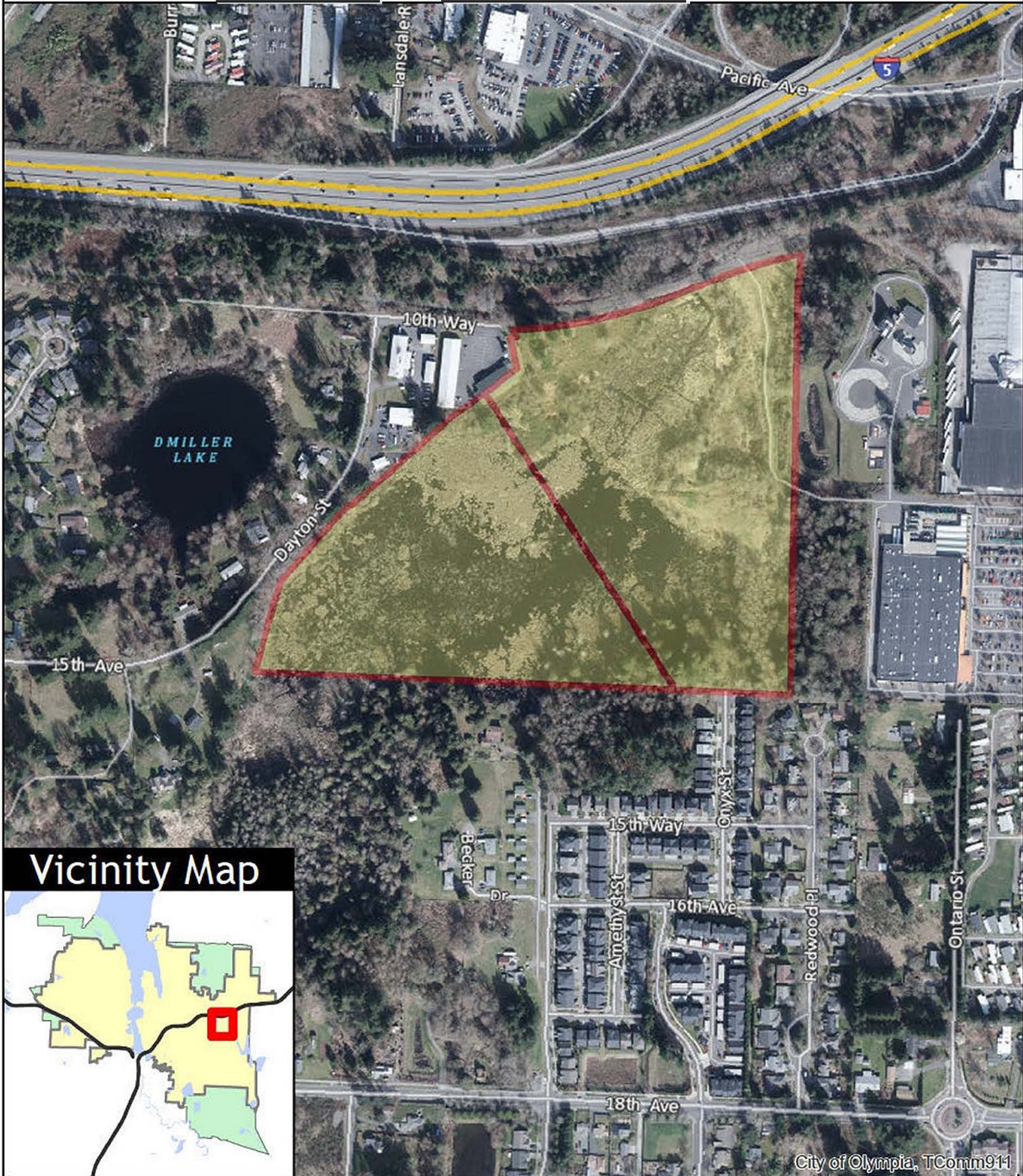


EXHIBIT A



Taylor Wetlands Property

Tax Parcels 09840036000, and 09840037000 - 40.88 acres



Vicinity Map



0 245 490 Feet

1 inch = 500 feet

This map is intended for 8.5x11" portrait printing.

The City of Olympia and its personnel cannot assure the accuracy, completeness, reliability, or suitability of this information for any particular purpose. The parcels, right-of-ways, utilities and structures depicted hereon are based on record information and aerial photos only. It is recommended the recipient and or user field verify all information prior to use. The use of this data for purposes other than those for which they were created may yield inaccurate or misleading results. The recipient may not assert any proprietary rights to this information. The City of Olympia and its personnel neither accept or assume liability or responsibility, whatsoever, for any activity involving this information with respect to lost profits, lost savings or any other consequential damages.

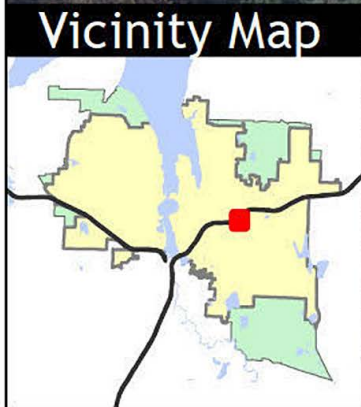
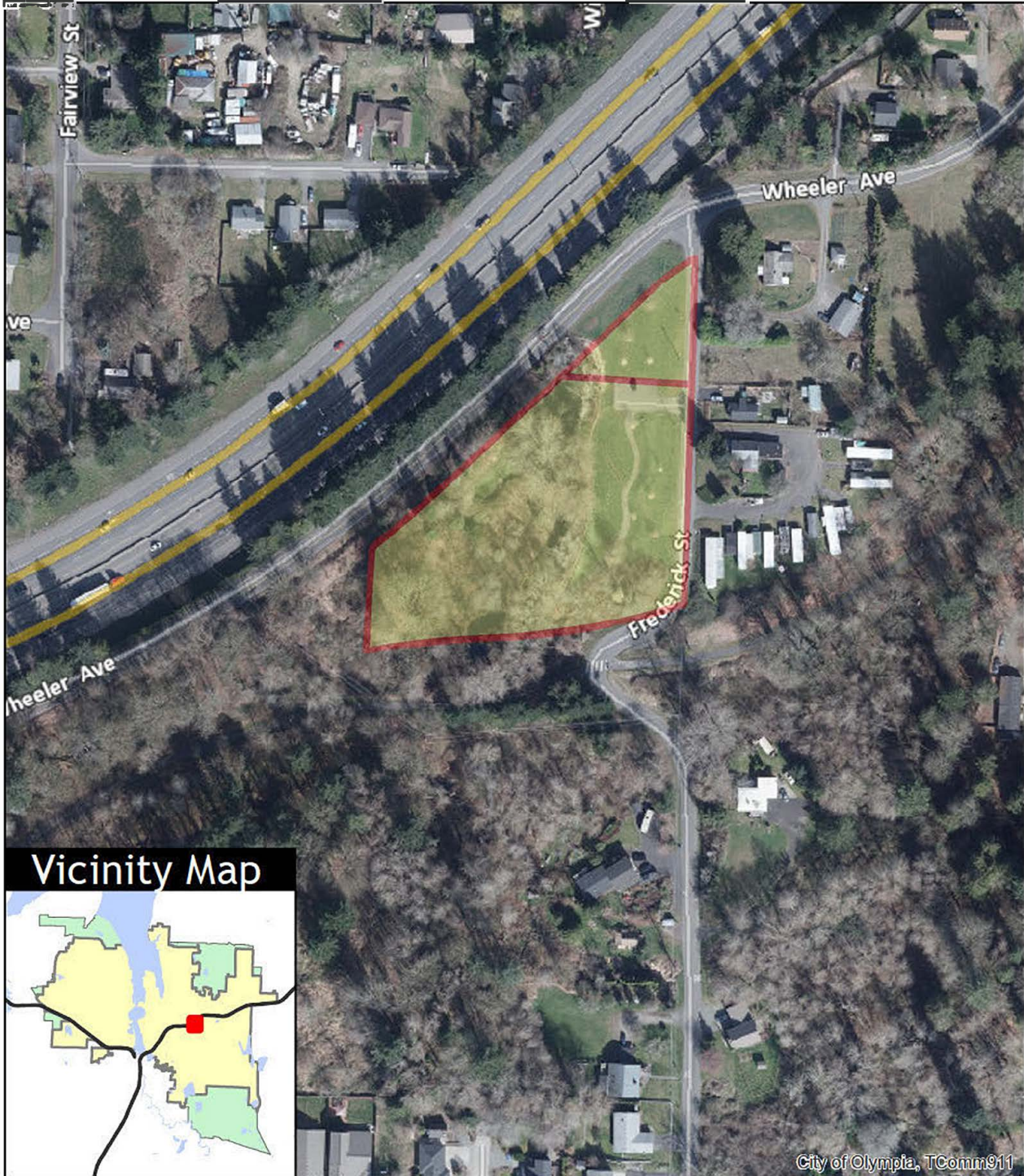


EXHIBIT A



Indian Creek Property

Tax Parcels 32800900000, and 32800600000 - 3.35 acres



City of Olympia, TComm911

0 95 190 Feet

1 inch = 200 feet

This map is intended for 8.5x11" portrait printing.

The City of Olympia and its personnel cannot assure the accuracy, completeness, reliability, or suitability of this information for any particular purpose. The parcels, right-of-ways, utilities and structures depicted herein are based on record information and aerial photos only. It is recommended the recipient and or user field verify all information prior to use. The use of this data for purposes other than those for which they were created may yield inaccurate or misleading results. The recipient may not assert any proprietary rights to this information. The City of Olympia and its personnel neither accept or assume liability or responsibility, whatsoever, for any activity involving this information with respect to lost profits, lost savings or any other consequential damages.



EXHIBIT A



Yauger Wetland Property

Tax Parcel 12816310500 - 8.43 acres



Vicinity Map



0 145 290 Feet 1 inch = 300 feet

This map is intended for 8.5x11" portrait printing.

The City of Olympia and its personnel cannot assure the accuracy, completeness, reliability, or suitability of this information for any particular purpose. The parcels, right-of-ways, utilities and structures depicted herein are based on record information and aerial photos only. It is recommended the recipient and or user field verify all information prior to use. The use of this data for purposes other than those for which they were created may yield inaccurate or misleading results. The recipient may not assert any proprietary rights to this information. The City of Olympia and its personnel neither accept or assume liability or responsibility, whatsoever, for any activity involving this information with respect to lost profits, lost savings or any other consequential damages.

