



Managed Shelter Site

Nursery Village Fact Sheet | Olympia's New Safe Shelter



The City of Olympia is looking to implement innovative housing strategies to respond to the visible increase in homelessness in our community. Working with community partners and creating outside the box strategies to safely and efficiently get people off the streets and into a safe housing option. Nursery Village is one of those strategies.

Our goal is for Nursery Village to be a safe, managed shelter site for individuals experiencing homelessness. Done in a controlled outdoor setting on City-owned property. Once housed we will engage and connect individuals to needed services.

This fact sheet is provided to give you information about the Nursery Village site.

olympiawa.gov/homelessness

Assisting Olympia's Homeless

The City will actively partner with other social service agencies. Nursery Village will focus on assisting those visibly homeless adults and couples (without children) in Olympia.

Shelter Framework

- The Village is an emergency housing facility for individuals experiencing homelessness in our community
- It will have a max capacity of 40 individuals
- It will be a mix of tents and tiny houses
- It will have a day area, private meeting area, bathrooms, garbage services, running water and power

Location and Operation

- The site will be located in the vicinity of Plum and Union near the Lee Creighton Justice Center and Japanese Garden. See map on reverse
- The Village will be open 24/7 with site management, case management, security and connection to tailored services

Guidelines

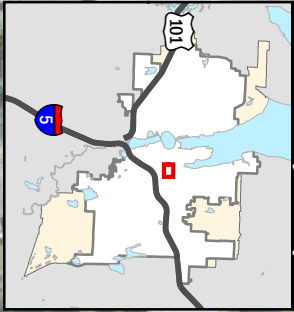
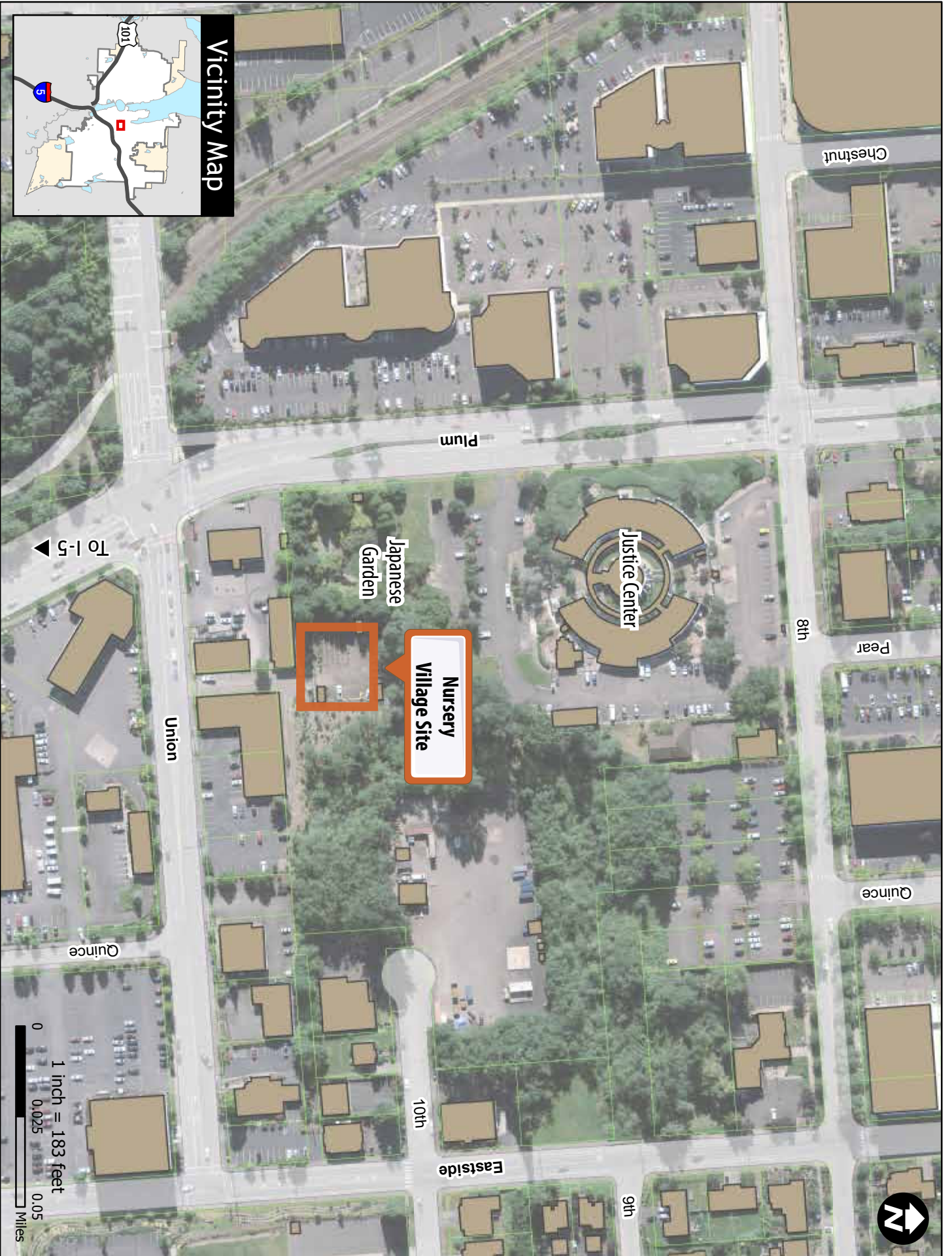
- Illegal drug use will not be allowed on the site
- Residents will follow clear rules and expectations

Next Steps

- We will work closely with the surrounding community to ensure we are good neighbors
- We will have opportunities for the community to share thoughts and voice concerns or questions. Visit our webpage to stay up-to-date
- The City of Olympia will be opening a second site with similar services in another area of town in the near future
- We believe by creating managed shelter sites we will take pressure off the Downtown, and create a safe and inviting community

Contact Information

Have questions or know of a potential partner, contact Colin DeForrest, Olympia's Homeless Response Coordinator at 360.709.2688 or cdeforre@ci.olympia.wa.us olympiawa.gov/homelessness



Vicinity Map

**Nursery
Village Site**

Japanese
Garden

Justice Center

Plum

Chestnut

8th

Pear

Quince

Union

Quince

10th

Eastside

9th

To I-5

1 inch = 183 feet
0 0.025 0.05 1 Miles



Map for illustration purposes only.