

# 2023 NPDES Annual Report & Stormwater Management Program Plan

Presented to the Utility  
Advisory Committee

March 7, 2024







Issuance Date: July 1, 2019  
Effective Date: August 1, 2019  
Expiration Date: July 31, 2024

**Western Washington Phase II Municipal  
Stormwater Permit**

National Pollutant Discharge Elimination System and  
State Waste Discharge General Permit for discharges from  
Small Municipal Separate Storm Sewers  
In Western Washington

State of Washington  
Department of Ecology  
Olympia, WA 98504-7600

In compliance with the provisions of  
The State of Washington Water Pollution Control Law



# Agenda

---

Permit & SWMP Overview

Program Details

Environmental Justice &  
Equity Work

Questions & Discussion



# Permit & SWMP Overview

---

Stormwater Planning

Construction & Redevelopment

Operations & Maintenance

Source Control

TMDL & Monitoring





# Program Details

---

Education & Outreach

Public Involvement

Training & Workshops

Illicit Discharge Detection &  
Elimination





# Public Education & Outreach

---

Stormwater Week

Yauger Park Signage

Five Things

Cielo partnership

PSSH

Dumpster lid campaign



## Utilities 2024 Draft Rates and Operating Budgets



Utility Advisory Committee  
October 5, 2023



# Public Involvement

---

Advisory Committees

Public Meetings/Hearings

Watershed Committees

Participation in Developing  
Rate Structures



### Municipal Stormwater Permit Resources

Program Quick Links

- Stormwater Planning
- Public Education and Outreach
- Public Involvement and Documentation
- Mapping and Documentation
- illicit Discharge Detection and Elimination (spills)
- Controlling Runoff from Construction Site
- Operations and Maintenance
- Source Control Program
- Secondary Permittes
- TMDL and Monitoring
- Reporting Requirements

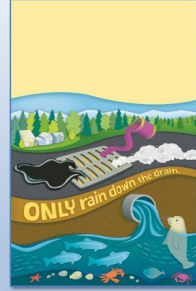
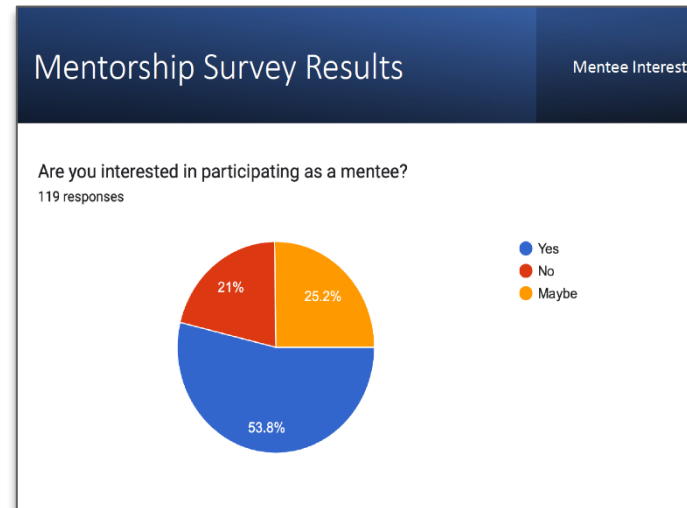
#### Compliance Program

The City of Olympia's Stormwater Compliance Program (MS4) is mandated and directed by Department of Ecology's NPDES Stormwater Permit. The purpose of this resource page is to help staff navigate the programs and requirements of the municipal stormwater permit. The webpage is organized in a manner consistent with the order of the NPDES stormwater permit.

- [Citywide Permit Organization Map](#)
- [Core Staff List](#)
- [NPDES Phase II Permit](#)

### Type of Spills to Report:

- Gasoline
- Sewage
- Chemicals
- Paint
- Oily sheens
- Muddy water from construction sites

# Training & Workshops

SharePoint Resource Page

New Employee Training

Wet Weather Kickoff

Maintenance & Construction Workshop

Permit Staff Mentorships



# Illicit Discharge Detection and Elimination (IDDE)

---

Number of Spills

How Spills Reported

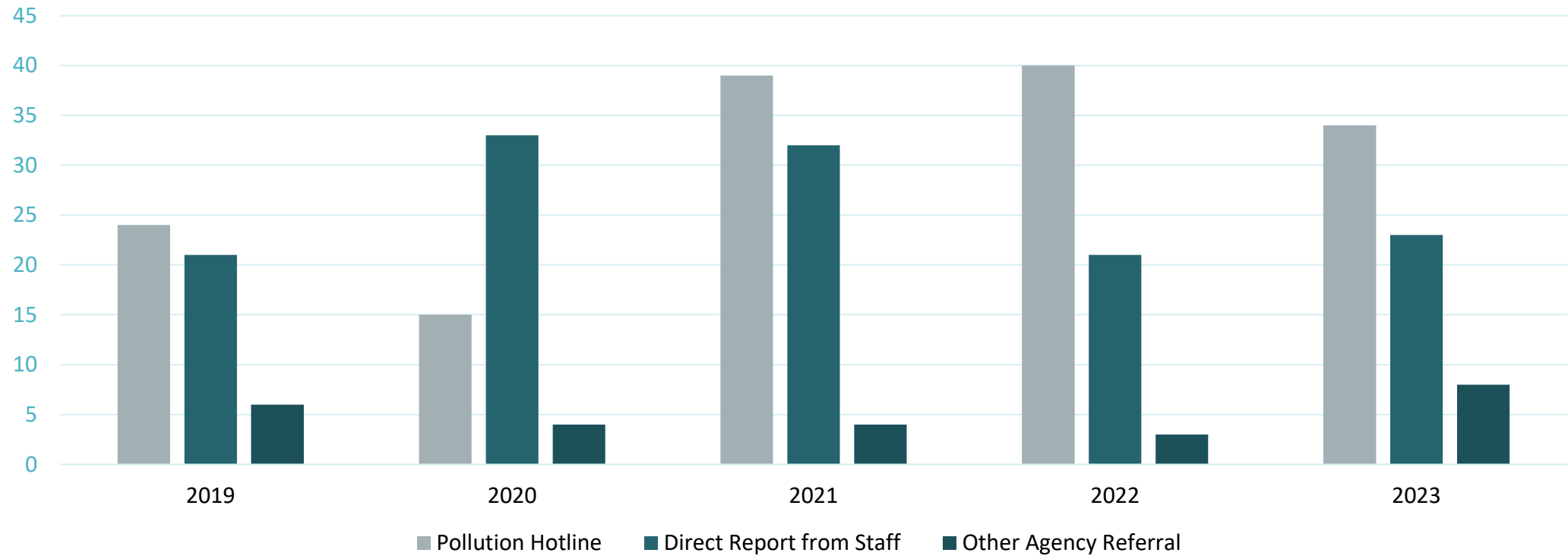
Into MS4 or not





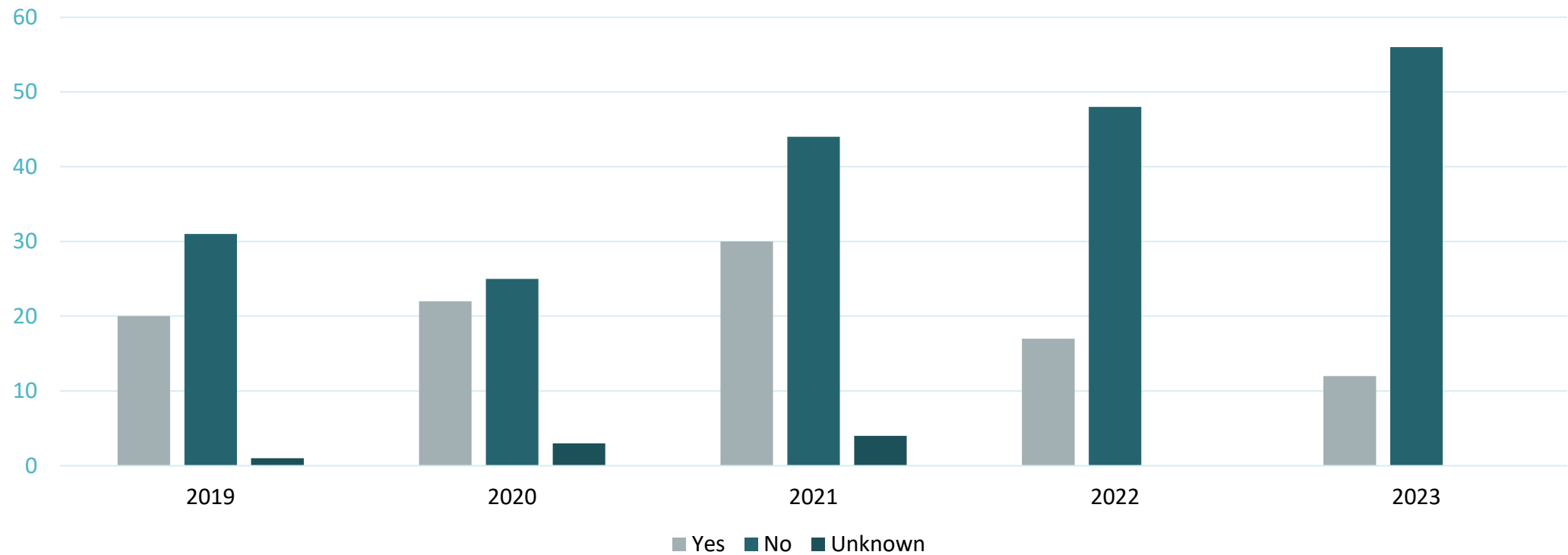
# Spills Calls – How Discovered or Reported

---

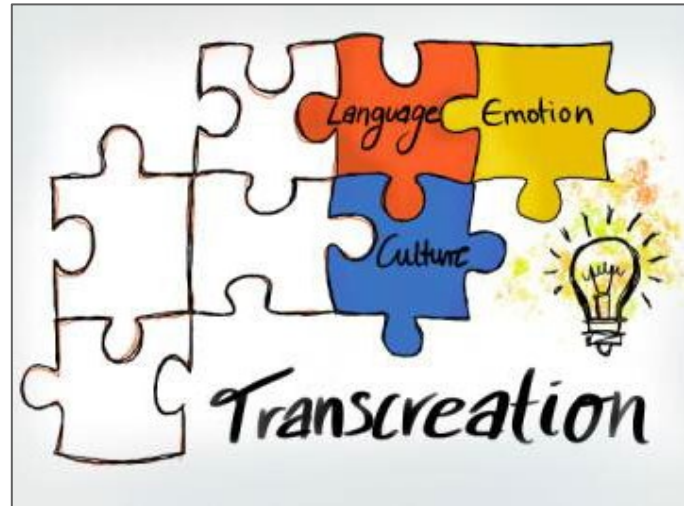


# Spills Calls – Discharge to MS4

---







# Environmental Justice & Equity Work

---

Transcreation of multiple  
resource documents

Attend meetings of the WSC  
EJ Salon and Permit Tools  
Meetings



### hùng & khay đựng phụ ngăn chặn chất tràn đổ để bảo vệ doanh nghiệp và các hồ và sông của chúng ta

**Tại sao sử dụng ngăn chặn thứ cấp?**

Các vật liệu nguy hiểm như các sản phẩm dầu mỏ, sơn, chất chống đông và dung môi gây ra mối đe dọa đối với các tuyến đường thủy địa phương nếu các thùng chứa chúng bị rò rỉ, hỏng hóc hoặc tràn ra ngoài. Các chất phải được cất giữ sao cho nếu xảy ra rò rỉ hoặc tràn đổ, các chất này vẫn được chứa và không gây ô nhiễm môi trường.

**Thùng đựng phụ là gì?**

Thùng đựng phụ là hàng rào kín chắn lỏng sẽ chứa các vật liệu nguy hiểm thoát ra từ thùng chứa chính. Ngăn chặn thứ cấp này nắm bắt các sự cố tràn tiềm ẩn. Ngăn chặn thứ cấp có thể là một bồn nhựa di động, trống kim loại, pallet có đế bằng thùng chứa, khu vực không thấm nước có gỗ hoặc lát đá, bề mặt cuối cùng hoặc sàn nghiêng.

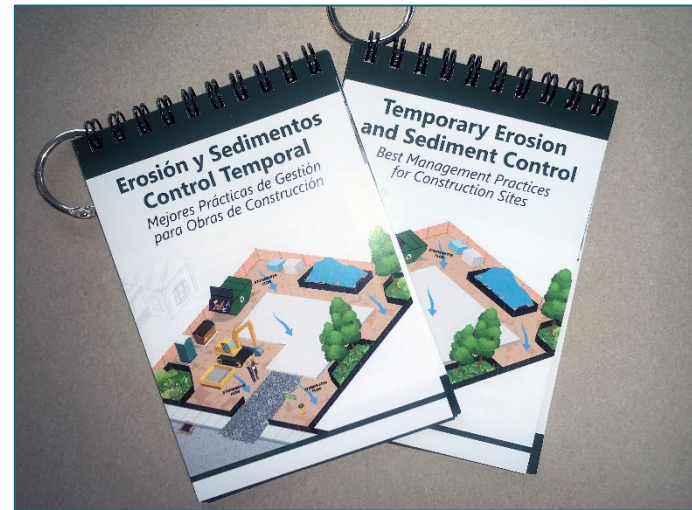
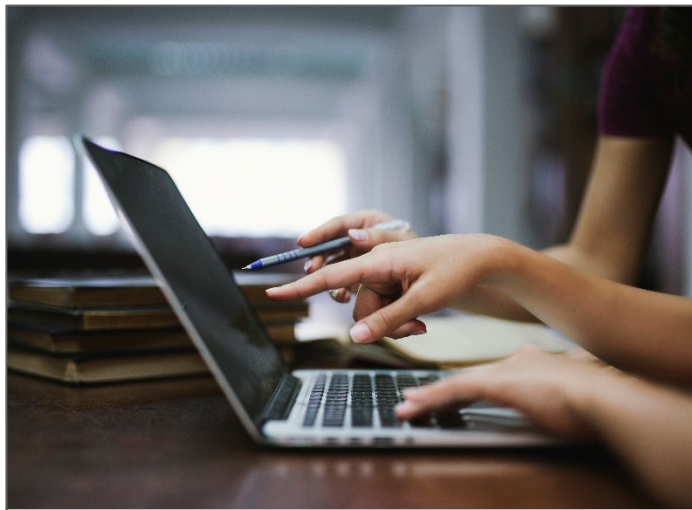
**Yêu cầu khối lượng**

Xác minh rằng ngăn chứa thứ cấp có thể chứa 110 phần trăm thể tích của ngăn chứa lớn nhất hoặc 10 phần trăm thể tích của tất cả các ngăn chứa, tùy theo giá trị nào lớn hơn.

*Lưu ý: Lưu trữ ngoài trời yêu cầu che phủ cả vật liệu và ngăn chặn, vì vậy nước mưa không lấp đầy thể tích ngăn chặn.*



Các thùng phụ trên pallet chứa ở khu vực ngoài trời có mái che

# Transcreation of Resource Documents

“shut the lid” dumpster campaign

Business Pollution Prevention

Construction Flipbook



## Municipal Environmental Justice

**Municipal Environmental Justice (EJ) Workgroups**

The 2020-2024 Phase I and Phase II permits include the term "overburdened communities." In 2020 the Phase I group held a meeting with the Department of Ecology to discuss the connection between Environmental Justice (EJ) and stormwater management. The idea to develop an EJ workgroup came out of a regional coordinator meeting last November. In response to both the broader issues of EJ and more specific permit topics of overburdened communities, the Municipal EJ Workgroup and Washington Stormwater Center EJ Salon were organized. With the intent to begin a dialogue on EJ and its intersections with the permit and stormwater management, we welcome anyone interested in engaging in <https://www.washington-stormwater.org/ej-salon/>.

- Washington Stormwater Center EJ Salon**

The Washington Stormwater Center wants to partner with its colleagues and friends to host informal discussions about stormwater's connection with environmental justice. This group will work on issues beyond the permit obligations. Co-ordinated with Maddie Burke from City of Vancouver.
- Municipal Environmental Justice (EJ) Workgroup and the Permit**

This workgroup is comprised of municipal stormwater staff to discuss issues, resources, and tools specific to permit obligations for overburdened communities.

## Equity in Community Engagement

Eunbi Lee

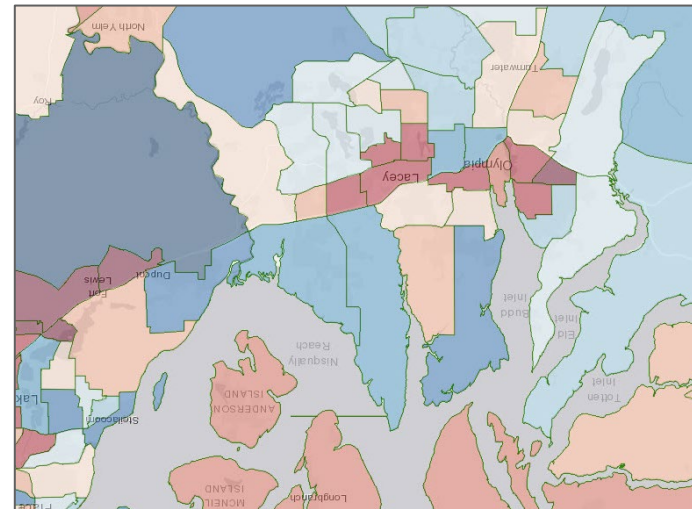
Poverty Bay & Vashon-Maury Island  
Pollution Identification and Correction (PIC)  
Program

Public Health—Seattle and King County

### FIVE THINGS I TRY TO REMEMBER, AND ONE I KEEP LEARNING OVER AND OVER...

1. Start by listening, and listen to understand
2. Wonder why you aren't getting responses
3. Think about what, and how, you say
4. Pay folks for their time
5. This is a marathon, not a race

**NO COMMUNITY IS MADE UP OF ONE KIND OF PERSON**



# Environmental Justice Meetings

Highlights

Member Involvement



# Questions & Discussion

---





# Thank You

**Jeremy Graham**

NPDES Coordinator

*[jgraham@ci.olympia.wa.us](mailto:jgraham@ci.olympia.wa.us)*

360.753.8097

