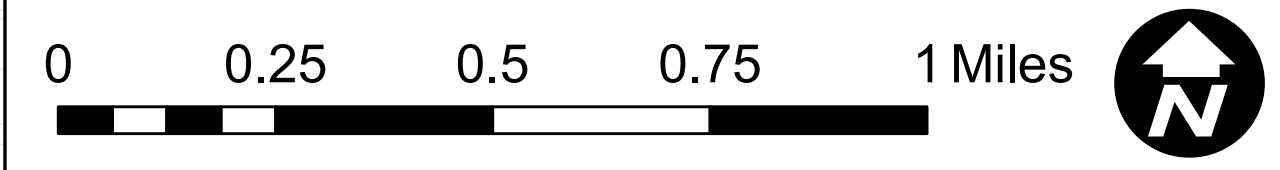
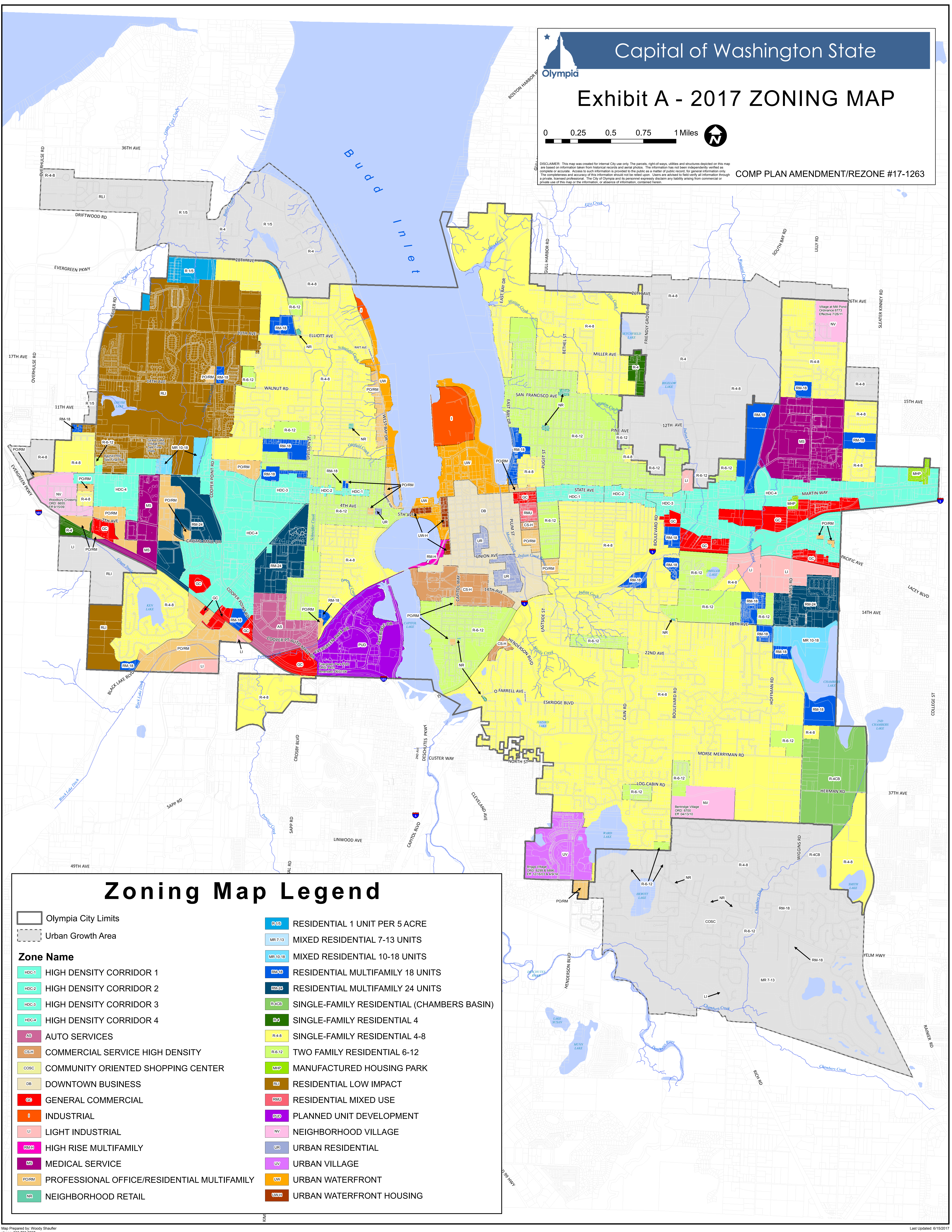


# Exhibit A - 2017 ZONING MAP



DISCLAIMER: This map was created for internal City use only. The parcels, right-of-ways, utilities and structures depicted on this map are based on information taken from historical records and aerial photos. The information has not been independently verified as complete or accurate. Access to such information is provided to the public as a matter of public record for general information only. The completeness and accuracy of this information should not be relied upon. Users are advised to first verify all information through a private, licensed professional. The City of Olympia and its personnel hereby disclaim any liability arising from commercial or private use of this map or the information, or absence of information, contained herein.

COMP PLAN AMENDMENT/REZONE #17-1263



## Zoning Map Legend

	Olympia City Limits		R-1S RESIDENTIAL 1 UNIT PER 5 ACRE
	Urban Growth Area		MR 7-13 MIXED RESIDENTIAL 7-13 UNITS
<b>Zone Name</b>			MR 10-18 MIXED RESIDENTIAL 10-18 UNITS
	HDC-1 HIGH DENSITY CORRIDOR 1		RM-18 RESIDENTIAL MULTIFAMILY 18 UNITS
	HDC-2 HIGH DENSITY CORRIDOR 2		RM-24 RESIDENTIAL MULTIFAMILY 24 UNITS
	HDC-3 HIGH DENSITY CORRIDOR 3		R-4CB SINGLE-FAMILY RESIDENTIAL (CHAMBERS BASIN)
	HDC-4 HIGH DENSITY CORRIDOR 4		R-4 SINGLE-FAMILY RESIDENTIAL 4
	AS AUTO SERVICES		R-4-8 SINGLE-FAMILY RESIDENTIAL 4-8
	CS-H COMMERCIAL SERVICE HIGH DENSITY		R-6-12 TWO FAMILY RESIDENTIAL 6-12
	COSC COMMUNITY ORIENTED SHOPPING CENTER		MHP MANUFACTURED HOUSING PARK
	DB DOWNTOWN BUSINESS		RLI RESIDENTIAL LOW IMPACT
	GC GENERAL COMMERCIAL		RMU RESIDENTIAL MIXED USE
	I INDUSTRIAL		PUD PLANNED UNIT DEVELOPMENT
	LI LIGHT INDUSTRIAL		NV NEIGHBORHOOD VILLAGE
	RMH HIGH RISE MULTIFAMILY		UR URBAN RESIDENTIAL
	MS MEDICAL SERVICE		UV URBAN VILLAGE
	PORM PROFESSIONAL OFFICE/RESIDENTIAL MULTIFAMILY		UW URBAN WATERFRONT
	NR NEIGHBORHOOD RETAIL		UWH URBAN WATERFRONT HOUSING