

# 2020 Percival Plinth Project Recommendations

March 12, 2020



1

Jury: March 3, 2020 - Jurors



- Timothy Grisham, City of Olympia Arts Commission Chair
- Nicole Gugliotti, South Puget Sound Community College Instruction & Classroom Support Technician
- Marissa Laubscher, Arts WA Art in Public Places Project Manager

2

## Project Background



Up to 16 sculptures displayed on Percival Landing for up to one year, \$700 honorarium. Peoples' Prize of one piece for purchase – not more than \$10,000. For 2020 we have capacity for up to 18 sculptures.

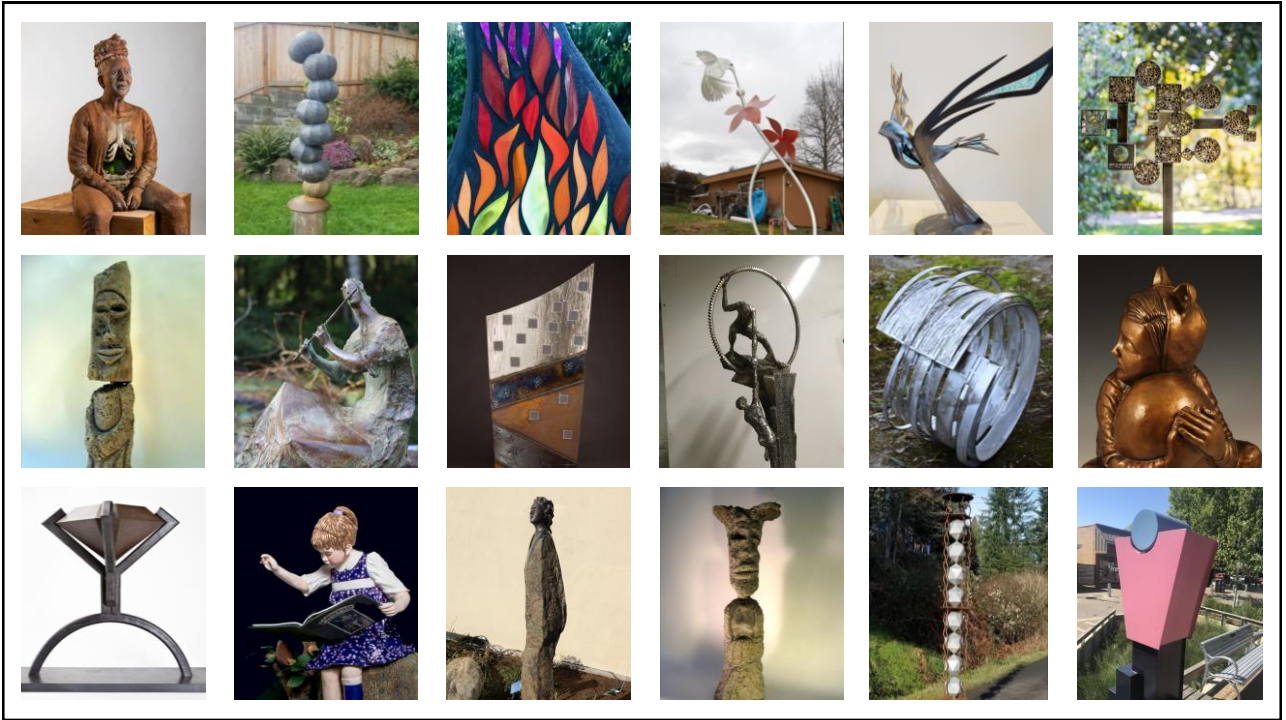
3

## Selection Criteria



- **Quality** of sculpture including evidence of artistic ability and originality or uniqueness of vision, technical competency, material integrity and craftsmanship.
- Sculpture must not present a **safety** risk to the public, should be able to withstand exposure to the elements and unsupervised interaction, and be maintenance-free for the duration of the exhibition. Artists must expect that sculpture may be climbed or marked on during exhibition.
- Balance and **diversity** of materials and style among selected sculptures.
- Artists should bear in mind that the **audiences** will be broad-based and of all ages and artwork should be appropriate for display in a public place. Artwork that includes advertising or logos or is political, religious or sexual in nature will not be considered.

4



5

## Silent Words

By Lloyd Whannell  
Freeland, Wa

Medium: Bronze head  
with basalt body and  
steel base plate

Dimensions: 6'x8"x8"

Value: \$6,000.00



6

## Girl Reading a Story in A Story Place

By  
Nancy Thorne-Chambers  
Olympia, WA

Medium: Bronze  
Dimensions: 45"H X  
22"W X 24"D  
Value: \$10,000.00



7

## Luxury Goods

By KT Hancock  
Seattle, Wa

Medium: Steel  
Dimensions:  
19" x 14" x 14"  
Value: \$3252.47



8

## Concrete Gnome

By Matt Cartwright  
Portland, OR

Medium: Concrete with  
steel pipe inclusion  
Dimensions: 42"x12"x13"  
Value: \$2,500.00



9

## The Magic of the Melody

By Gegham  
Abrahamyan  
Lynnwood, WA

Medium: Bronze  
Dimensions:  
55" x 48" x 25"  
Value: \$10,000.00



10

## Mt. Rainier, Glacial

By Lin McJunkin and Milo White

Sedro-Woolley, WA

Medium: Mild steel, cast glass

Dimensions: 80" x 24" x 12"

Value: \$5500.00



11

## The fall and the climb

By Nathan Robles

Kennewick, Wa

Medium: Steel and clear enamel

Dimensions: 75 X 24 X 24

Value: \$6,500.00



12

## Curl

By Ken Turner  
Seattle, WA

Medium: stainless steel  
Dimensions: 27" x 26" x 19"  
Value: \$3850.00



13

## Child With Egg

By Joe Batt  
Olympia, Wa

Medium: Bronze  
Dimensions:  
22.25" x 16" x 18"  
Value: \$6,000.00



14

## Pollinator

By MacRae Wyle  
Hood River, Or

Medium: Steel and  
Bamboo

Dimensions:

65 x 24 x 24

Value: \$2,000.00



15

## La Paloma (The Dove)

By Lin McJunkin and  
Milo White  
Sedro-Woolley, WA

Medium: stainless  
steel and cast glass

Dimensions: 5' x 5' x 5'

Value: \$9,500.00



16



## Hummingbird

By Charles Fitzgerald  
Puyallup, Wa

Medium: aluminum

Dimensions: height 10 ft.  
width 45 in. width 45 in.

Value: \$10,000.00



17

## Growing Love

By Carrie Ziegler and  
Shon Forsyth  
Olympia, WA

Medium: Stainless steel  
threaded rod, ¼" rod,  
stucco mesh, concrete,  
and stained glass, mortar,  
grout, sealer.

Dimensions: 72" x 25.5" x  
12"

Value: \$9,500.00



18

## Discombobble

By Rodger Squirrell  
Lake Forest Park, WA

Medium: Steel,  
galvanized steel, and  
bronze

Dimensions: 66" x 16"  
x 16"

Value: \$8,700.00



19

## Woman with Graves at Her Back

By Aisha Harrison  
Olympia, Wa

Medium: full scale clay, final  
piece will be in bronze

Dimensions: 60" x 22" x 22"

Value: \$25,000

I understand that the  
purchase price cannot  
exceed 10,000 if selected.

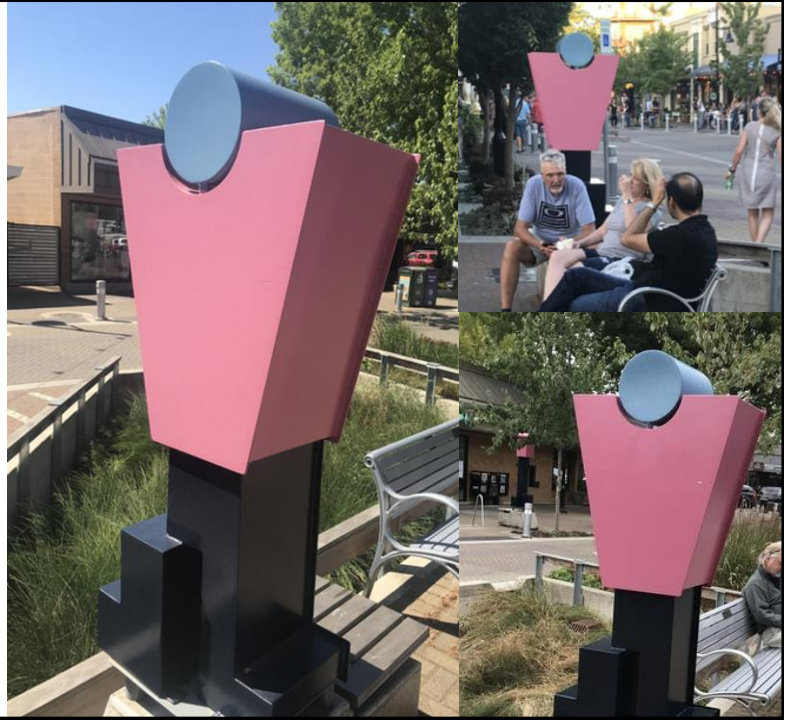


20

I carry a building  
on my shoulders

By Ed McCarthy  
Renton, WA

Medium: Painted steel  
Dimensions: 60x22x14  
Value: \$6,500.00



21

Eggtimer IV

By Rodger Squirrell  
Lake Forest Park, WA

Medium: Steel and  
galvanized steel  
Dimensions:  
105" x 18" x 18"  
Value: \$10,000.00



22

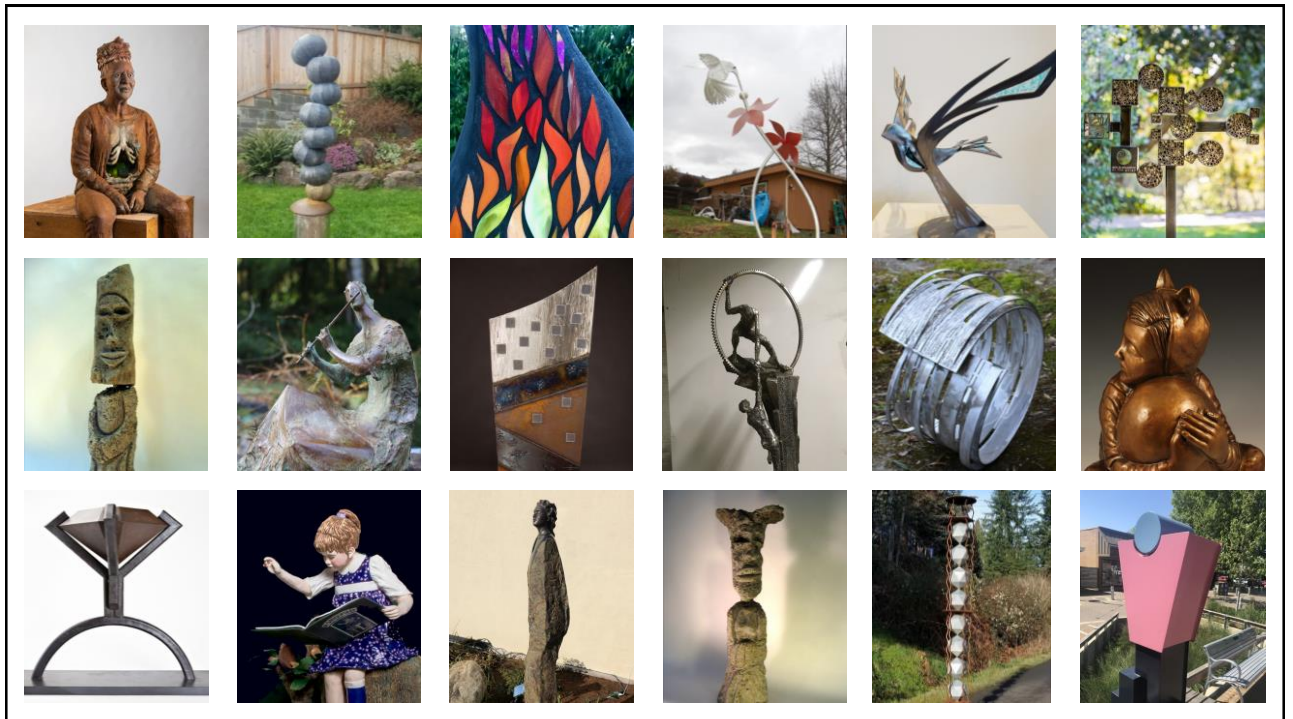
# Concrete Gnome Queen

By Matt Cartwright  
Portland, OR

Medium: Concrete with  
steel pipe inclusion  
Dimensions: 32"x9"x10"  
Value: \$2,200.00



23



24