

Changes to the Shoreline Master Program for West Bay Park and other properties in the Waterfront Recreation shoreline environment are proposed

Issue:

The majority of properties within the Waterfront Recreation shoreline environment are either publicly owned or substantially developed, or both. Portions of this shoreline environment are subject to a 150-foot setback from the water's edge and are to provide a 150-foot wide Vegetation Conservation Area (VCA), while other parts of this shoreline environment have a 30-foot setback and VCA requirement. West Bay Park is located in the part of the shoreline environment with the 150-foot setback and VCA. Most existing park improvements (lawn, parking area, pathways) are within the setback and VCA. Most of the park improvements that exist today would not be allowed in a VCA and are grandfathered in, but it does create a nonconformity. The setback and VCA requirements substantially reduce the ability of the City to make park improvements, such as adding bathrooms.

Proposed Change:

The City proposes adding references to the West Bay Environmental Restoration Assessment Report in several locations throughout the Shoreline Master Program (SMP) and proposes to reduce the setback from the shoreline and the required width of the VCA from 150 feet to 30 feet for all portions of the Waterfront Recreation shoreline environment.

Comments:

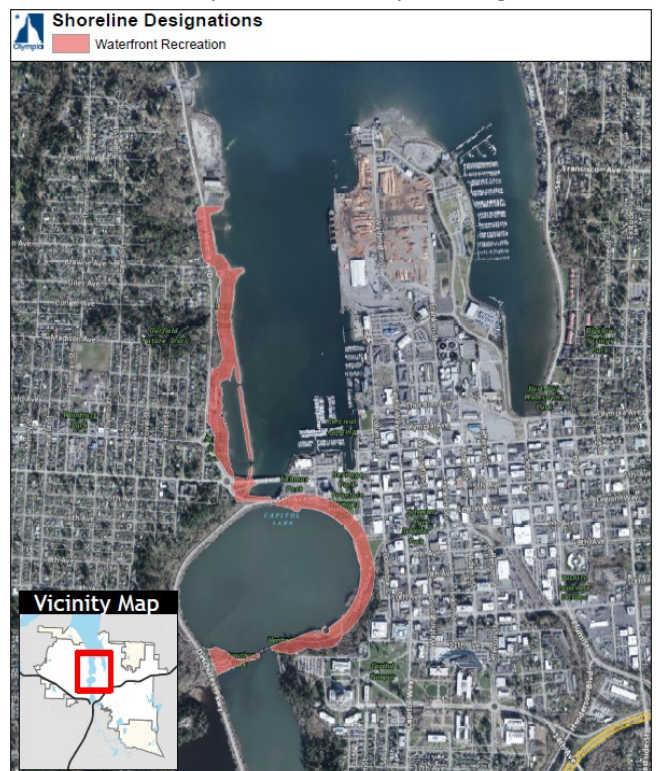
The proposed change would allow for the addition of restrooms and other potential improvements in closer proximity to where the majority of park visitors spend their time while in the park, while still providing for an area of vegetation conservation adjacent to the shoreline. Restrooms continue to be the most requested improvement at West Bay Park.

At some point in the future there will be a parks master planning process with the community and Tribes for the park. The process will consider more substantial uses, such as a public trail (known as part of the Big W trail) and substantial habitat restoration both in water and on land.

Since the SMP was adopted in 2015, the City has continued to evaluate West Bay Park for potential improvements, a public trail, and substantial shoreline restoration. The Recreation, Trail & Restoration Analysis Report (2019) is available on the City's website at olympiawa.gov/westbaypark.

Which parts of the city are in the Waterfront Recreation shoreline environment?

The majority of land within the Waterfront Recreation designation are publicly owned, either by the City or the State, including West Bay Park, Seven Oars Park, a portion of Isthmus Park, Heritage Park, and Marathon Park. There are some privately owned residences and businesses as well as a small parcel owned by the Port of Olympia.



Where can I learn more about the proposed changes?

Information about the project, its timeline, and draft changes are available on the project webpage at olympiawa.gov/smp.

How can I stay informed?

There are three primary ways to keep up to date on this proposal. The first is to request to be a “Party of Record” for this proposal. Parties of Record will receive updates via email and will receive a notice prior to the public hearing. To become a Party of Record please email Joyce Phillips at jphillip@ci.olympia.wa.us.

The City has several E-News distribution lists and you can subscribe to any that interest you. For this project, E-News announcements will be sent to the Planning & Development group. You can sign up at olympiawa.gov/subscribe.

The project webpage will be updated as new information, draft documents, or meeting announcements are made. Check back at your convenience at olympiawa.gov/smp.

