



May 2017

Response Planning for Sea Level Rise



Sea Level Rise (SLR) Response Planning



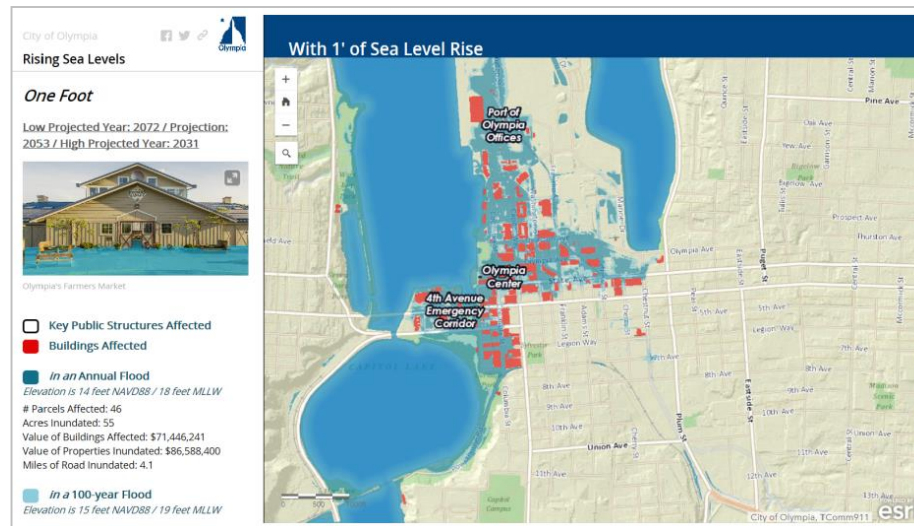
Business of the Evening

Agenda

- Project Status
- Planning Approach
- Project Limitations
- Community Engagement
- Schedule

Project Status

- Interlocal agreement in place
- Initial consultant contract in place
- Project kick-off meeting held May 4
- Scope of work under review



Planning Approach

Goal: Develop a formal community plan that prioritizes strategies and investments for best responding to sea rise, while protecting downtown's economic, social and environmental values.

The plan will identify:
strategic actions to address SLR,
implementation schedules, and
responsibilities.

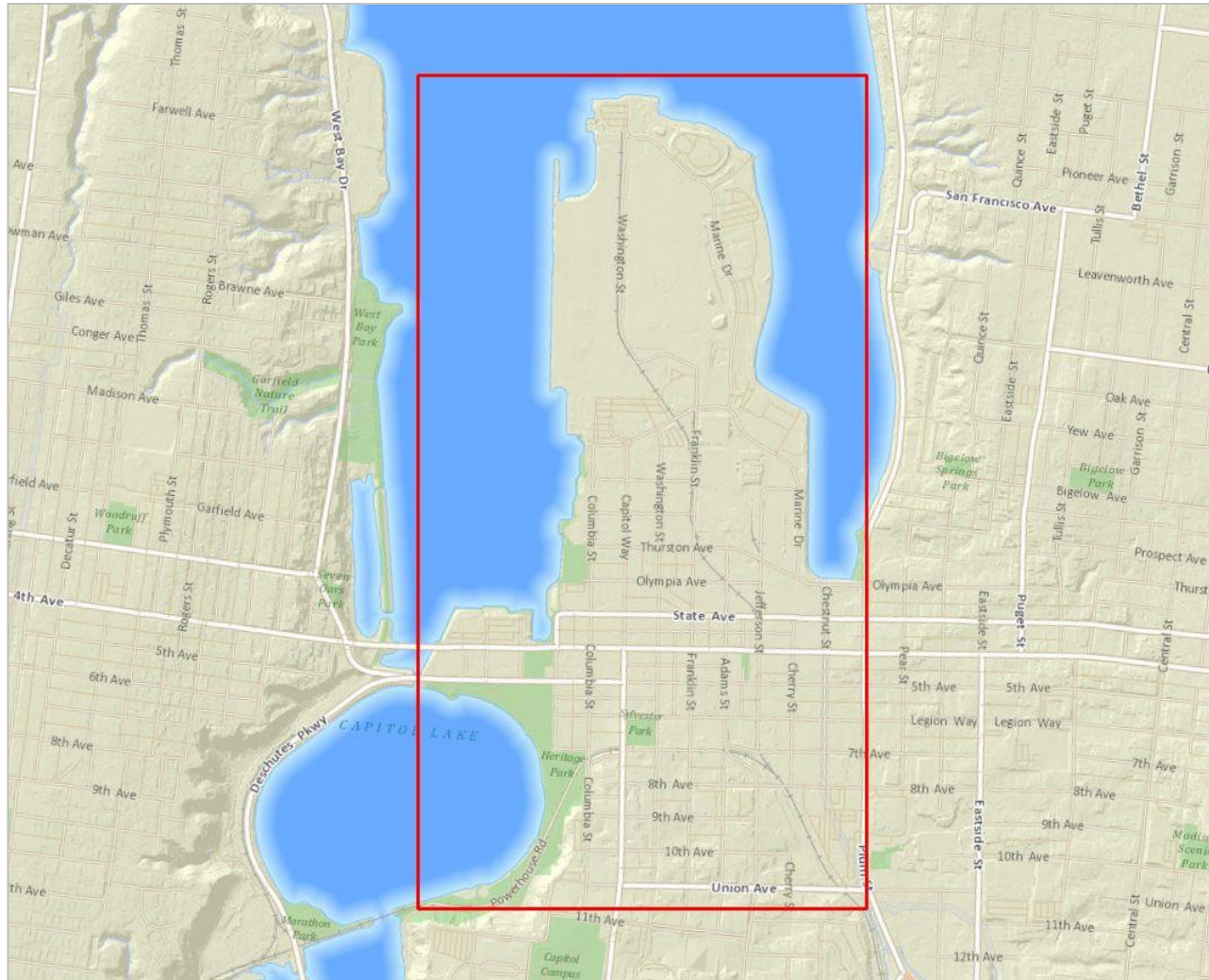


Planning Approach

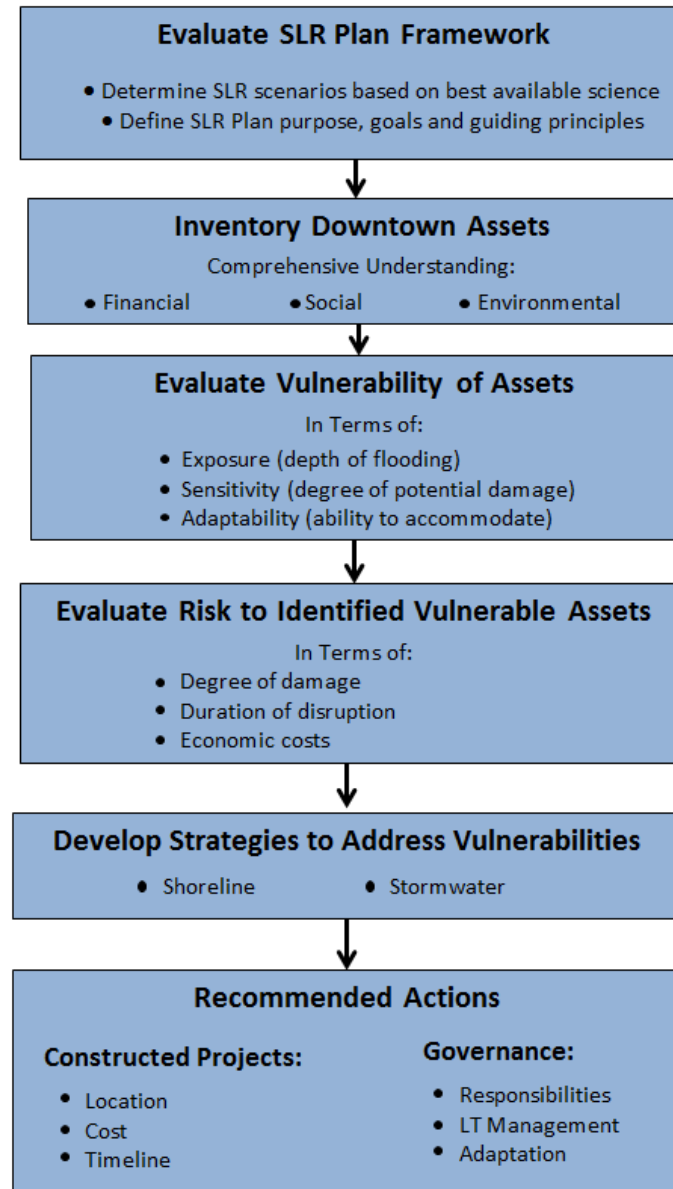
Our downtown is vulnerable



Planning Approach

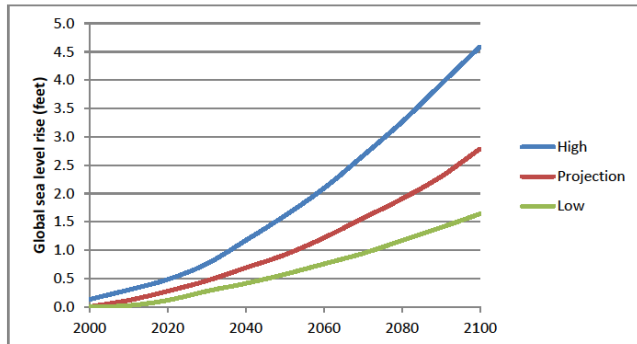


Planning Approach



Project Limitations

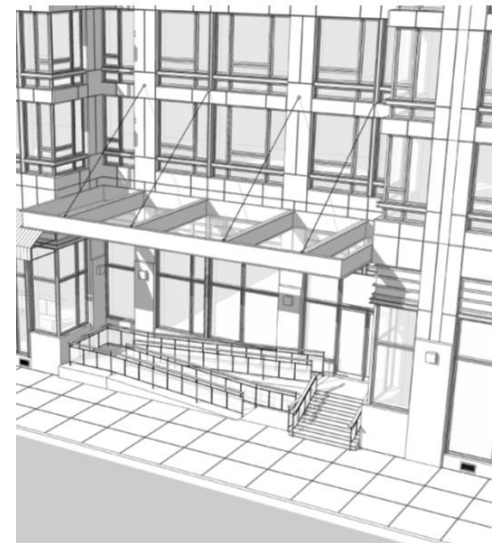
- Develop 3-4 protection schemes
- 10% designs with rough cost estimates
- Use best available science
 - which is evolving continually



Community Engagement

Workshops at three key planning points:

- Framework & risk/vulnerability assessment
- Draft adaptation strategies
- Final SLR Plan



Community Engagement

Additional outreach:

- Kick-off community meeting in June
- Focus groups with business community & others
- Web presence
- SLR E-Newsletter
- Possible community survey



Schedule

City of Olympia Sea Level Rise Response Plan - Proposed Schedule
 May 5, 2017

Month	May-17	Jun-17	Jul-17	Aug-17	Sep-17	Oct-17	Nov-17	Dec-17	Jan-18	Feb-18	Mar-18	Apr-18	May-18	Jun-18	Jul-18	Aug-18	Sep-18	Oct-18	Nov-18	Dec-18
PHASE 1																				
1. Project Management																				
a. Monthly coordination calls																				
b. Project team management																				
a. Project partners website																				
2. Project Initiation & Scope of Work Finalization																				
a. Kick-off and site walk	☒																			
b. Scope Finalization	★																			
3. Data Review																				
a. Review prior studies and data																				
b. Climate science review		★																		
4. Travel and Expenses																				
PHASE 2																				
5. Develop SLR Planning Framework				★																
6. Vulnerability and Risk Assessment																				
a. Asset data collection					☒															
b. Vulnerability assessment							★													
c. Risk assessment							★													
7. Evaluate Adaptation Strategies and Develop Preferred Plan																				
a. Develop initial strategies and scenarios																				
b. Develop preferred plan										☒			★							
c. Develop governance and informational strategies													★							
8. Community and Stakeholder Engagement																				
a. Prepare materials and graphics																				
c. Attend community workshops (3)							◆		◆			◆								
9. SLR Response Plan																★				Adopt Plan

Task Deliverable
 In-person Meeting
 Community Workshop



Response Planning for Sea Level Rise

Questions?