



Implementing the Comprehensive Plan

In 2014, Olympia will adopt an updated Comprehensive Plan with goals and policies that reflect the community's desire for how to grow and develop over the next 20 years.

Early in the *Imagine Olympia* Comprehensive Plan Update process, the City Council determined a vital next step: make sure the Comprehensive Plan goals and policies become reality and have an impact on the community. The resulting addition to the scope of the update was a companion "implementation strategy with performance measures."

A strategy for implementation picks up where *Imagine Olympia* leaves off and engages the community in a collaborative process to identify what programs, projects, and activities will implement the updated Comprehensive Plan. Those potential actions will provide new and creative opportunities for the City and community members to work together to create a positive impact on the Olympia community.

Aligning our Efforts with the Comprehensive Plan and Measuring Success

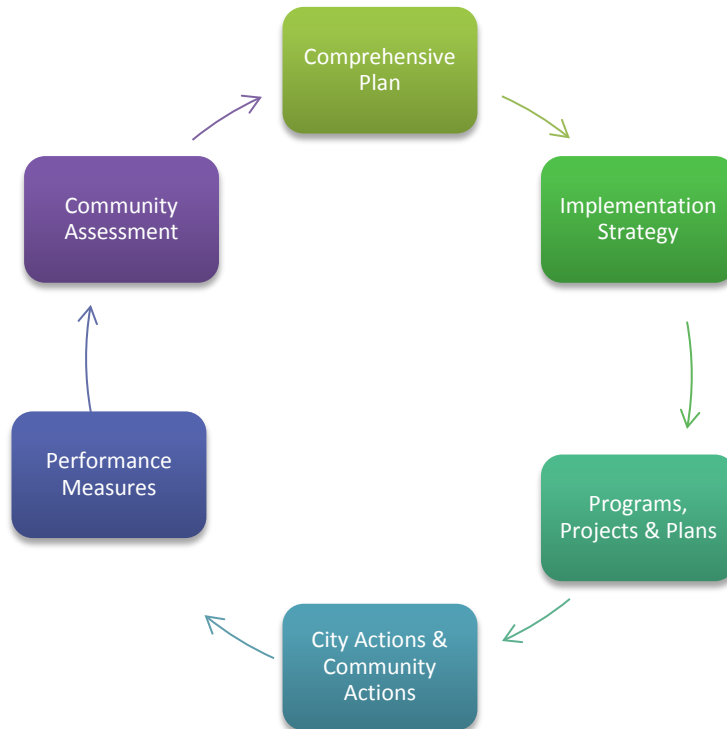
A strategy for implementation isn't proposed to be separate from or replace what the City is already doing. Instead, the strategy is a way to align current and future work efforts with the Comprehensive Plan, and track their success.

The goals and policies in the Comprehensive Plan are a foundation for the programs, projects, plans, and regulations the City pursues and adopts. The Capital Facilities Plan (CFP) is the element of the Comprehensive Plan that guides how the City plans for the construction and maintenance of vital infrastructure, such as road, utilities, and parks.

The implementation strategy will identify the actions that will carry out the *goals and policies* in the Comprehensive Plan. Actions would be expected to have available funding and willing partners. Each action would be linked to an indicator to measure its effectiveness. The strategy may include such elements as:

- The best actions for implementing specific goals and policies;
- Which actions to focus on in the short-term and in the long-term;
- Lead entities for each action;
- Willing partners for collaborating on implementation; and
- Performance measures

Performance measures are a tool for tracking and sharing the progress being made on implementing the Comprehensive Plan. Tracking these measures is vital for the City and its partners to assess actions that are working and those that are not, and make critical adjustments to be more effective.



A strategy for implementation will set out a path for accomplishing the actions in the updated Comprehensive Plan, and align the programs, projects, and plan processes carried out by the City and its community partners.

Guidance from the City Council's Land Use and Environment Committee (LUEC)

At prior meetings with staff, the Land Use and Environment Committee determined that an implementation strategy will be:

1. Developed with LUEC as the lead advisory body;
2. Separate from the Comprehensive Plan;
3. Created by the community (including Olympia Advisory Committees and Commissions);
4. Based on other successful models;
5. Implemented by the City and community partners; and
6. Accessible and engaging for everyone.



Creating a Strategy for Implementation

To create the first draft strategy for implementation based on LUEC direction, staff is proposing the following next steps be completed by July 2013:

Task	Timeline
✓ Use the Comprehensive Plan's value statements to identify focus areas	November 2013
✓ Identify actions from <i>Imagine Olympia</i> that support the focus areas	December 2013
✓ Identify for each action a general timeline for completion: <ul style="list-style-type: none"> ○ Short-term: Years 1-3 ○ Mid-term: Years 3-6 ○ Long-term: Years 6+ 	December 2013
✓ Identify for each action a lead and potential partners	January/February 2014
Check-in with LUEC	February 2014
✓ Identify performance measures for each action or focus area	February/March/April 2014
✓ LUEC hosts a community engagement process	April/May 2014
Check-in with the Olympia Planning Commission	April 2014
Check-in with LUEC	April 2014
✓ Make revisions to the draft strategy To incorporate community input	June 2014
✓ Council adopts the first Strategy for Implementation	July 2014

Envisioning a Strategy for Implementation

One example of a potential value focus area in a strategy might be “Protect and Restore the Natural Environment.” A potential subsequent action might be to develop and begin implementing a citywide Green Infrastructure Plan or Strategy for the preservation and restoration of sensitive environmental areas. The City would be the likely lead partner, but could collaborate with other groups, such as the Squaxin Island Tribe, South Puget Sound Salmon Enhancement Group, or The Evergreen State College. One option for tracking success might be to measure how many acres of sensitive environmental areas are being preserved or restored.



Value: Environmental Stewardship



Action: Develop and implement a citywide Green Infrastructure Plan that identifies and prioritizes natural areas for preservation and restoration



Timeline for Completion: 3-6 years



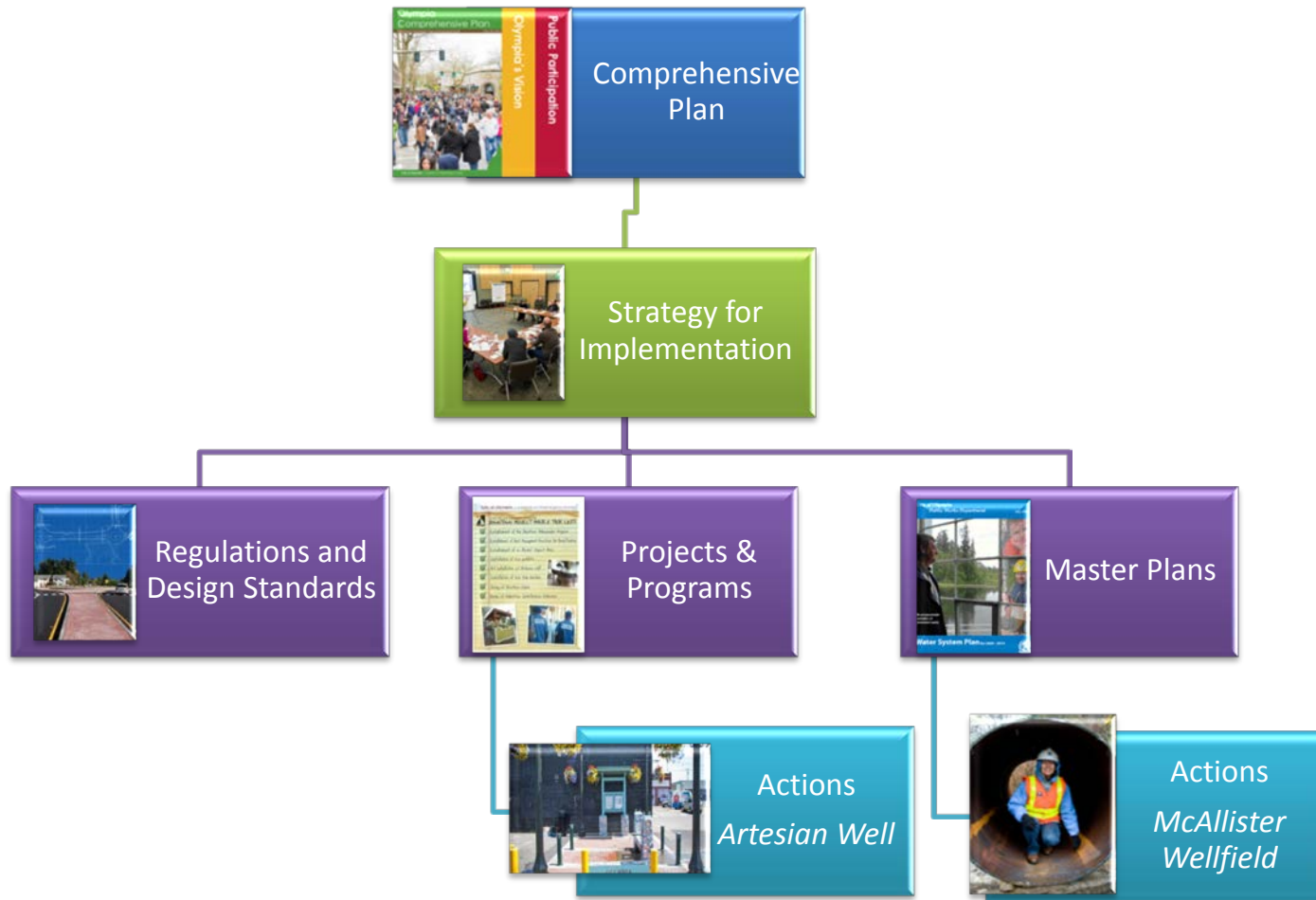
Lead: City of Olympia

Potential Partner(s): Squaxin Island Tribe, South Puget Sound Salmon Enhancement Group, The Evergreen State College



Performance Measure: The amount of sensitive natural area (wetlands, stream riparian areas, etc.) that is preserved or restored.

Appendix A: Comprehensive Plan as a Guiding Document



A strategy for implementation will set out a path to accomplishing the goals and policies of the Comprehensive Plan. Examples of actions the City has already implemented include the new Artesian Well Park and McAllister Wellfield.