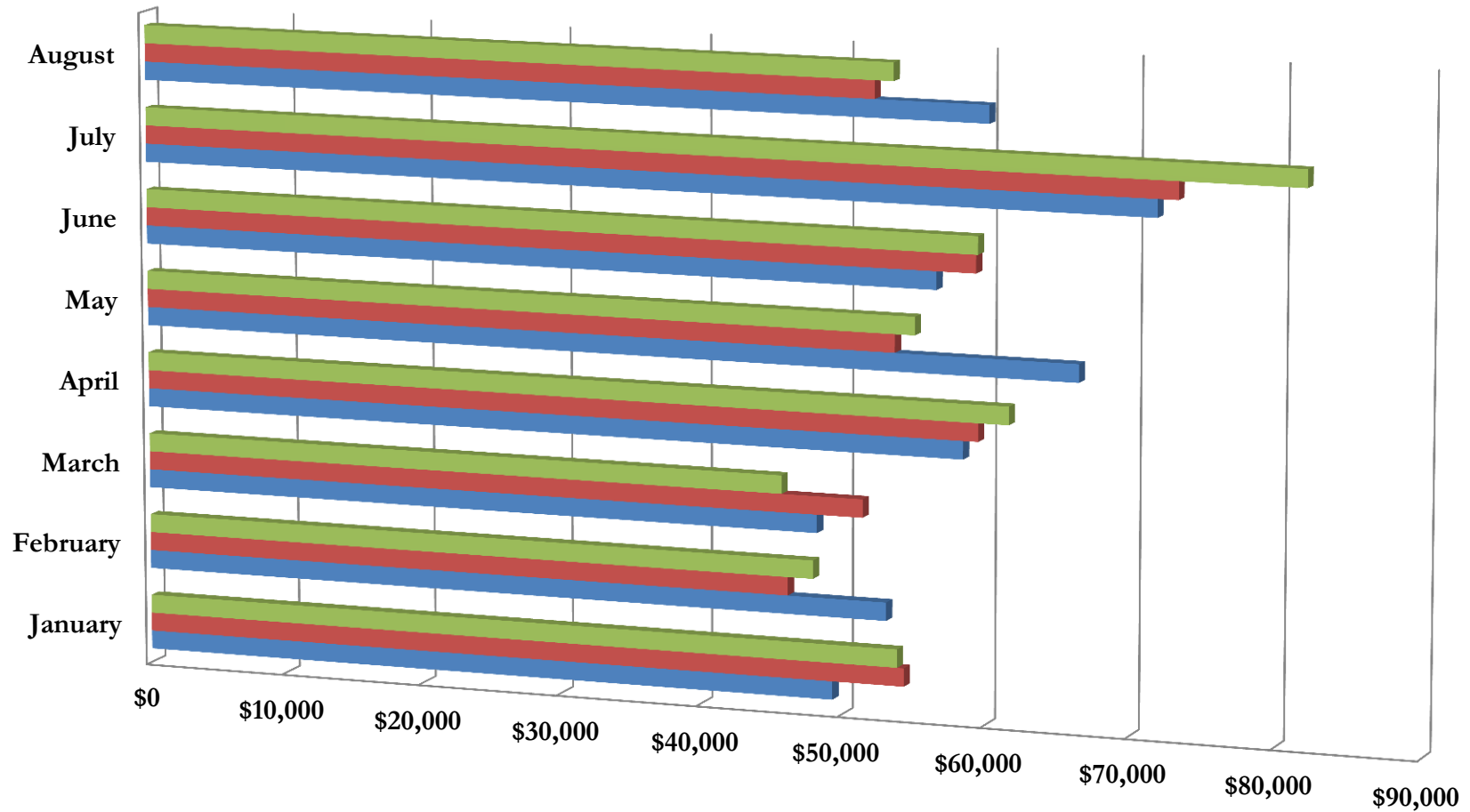


# 2011 - 2013 Monthly Revenue

## January through August



	January	February	March	April	May	June	July	August
2011	\$53,876	\$47,956	\$45,738	\$61,618	\$55,064	\$59,420	\$81,922	\$53,559
2012	\$54,351	\$46,174	\$51,440	\$59,499	\$53,678	\$59,301	\$73,161	\$52,232
2013	\$49,327	\$53,104	\$48,233	\$58,450	\$66,429	\$56,569	\$71,725	\$60,192