

Period of Significance (1892 - 1927)



1892



1906 (east annex)



1928 (fire)

Steel Shingle Roofing



1928



1949 (earthquake)



1975



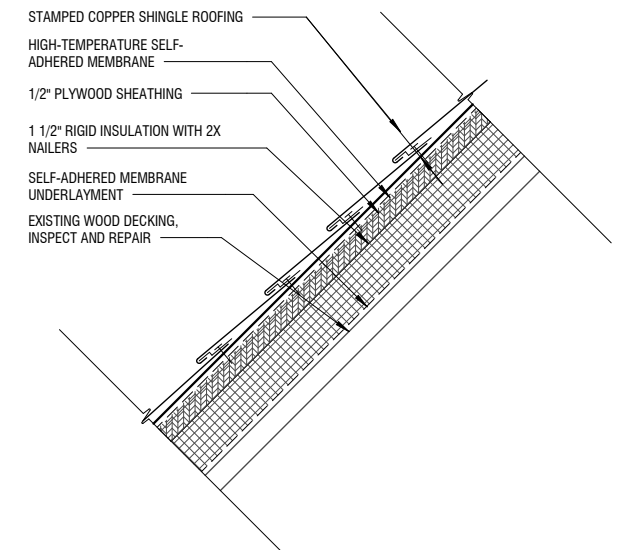
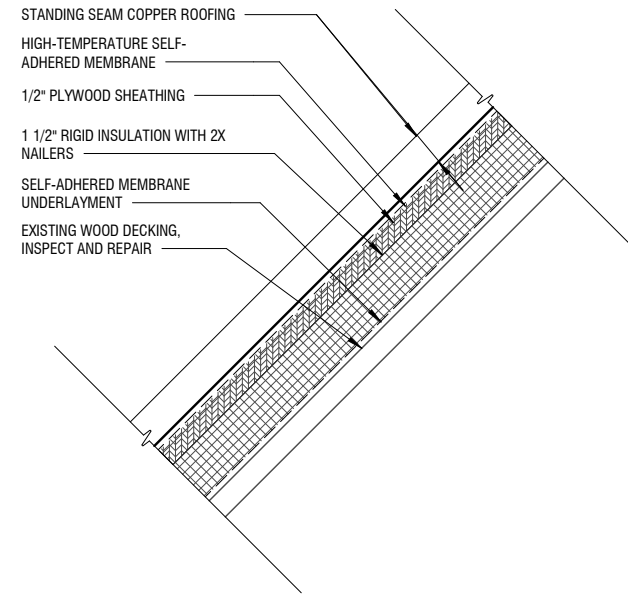
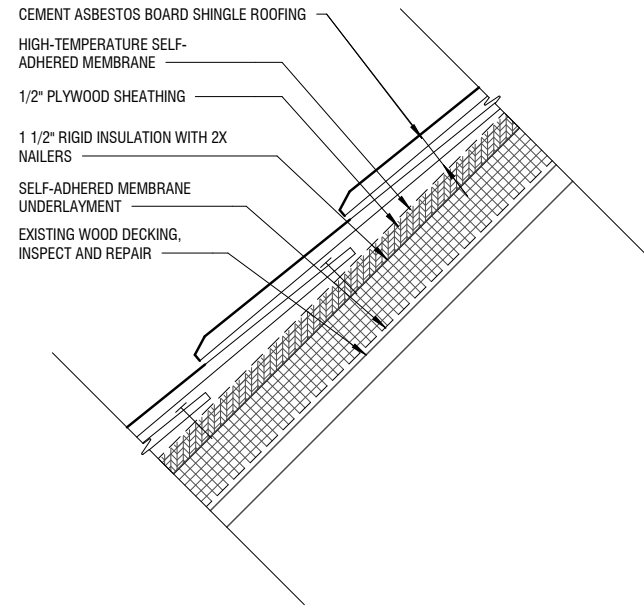
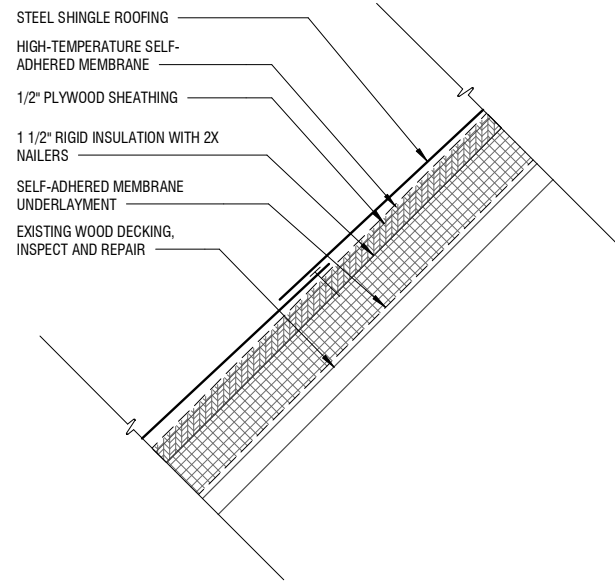
1983

Steel Shingle Roofing

Cement Asbestos Board Shingle

Standing Seam Copper Roofing

REPLACEMENT MATERIALS



STEEL SHINGLE (GALVANIZED, KYNAR-COATED)

- HISTORICALLY APPROPRIATE FOR PERIOD OF SIGNIFICANCE (1892–1928)
- EASILY MODIFIABLE IN FIELD FOR COMPLEX GEOMETRIES
- HIGH LABOR COST FOR INSTALLATION
- HIGH NUMBER OF PENETRATIONS (2 FASTENERS PER SHINGLE)
- KYNAR COATING WARRANTY TYPICALLY 10 TO 20 YEARS

CEMENT ASBESTOS BOARD SHINGLE

- OUTSIDE PERIOD OF SIGNIFICANCE (1928(?)-1983)
- HISTORIC PHOTOS APPEAR VERTICALLY-ORIENTED/RIBBED
- SHINGLED TEXTURE SIMILAR TO ORIGINAL METAL SHINGLES
- HAZARDOUS MATERIAL, POOR CHOICE FOR REPLACEMENT

COPPER STANDING SEAM

- OUTSIDE OF PERIOD OF SIGNIFICANCE (CA. 1983–PRESENT)
- MALLEABLE / MODIFIABLE IN FIELD FOR COMPLEX GEOMETRIES
- HIGH MATERIAL COST
- SOLDERABLE FOR WATER-TIGHT JOINTS WITHOUT SEALANT
- FEWER, CONCEALED FASTENERS THAN SHINGLE OPTIONS
- NON-CORROSIVE / DURABLE
- LEACHING CONCERN FOR STORM-WATER RUNOFF (SALMON)

STAMPED COPPER SHINGLE SHEETS

- NOT PREVIOUSLY UTILIZED
- SIMILAR TO HISTORIC SHINGLE APPEARANCE
- MALLEABLE / MODIFIABLE IN FIELD FOR COMPLEX GEOMETRIES
- HIGH MATERIAL COST
- SOLDERABLE FOR WATER-TIGHT JOINTS WITHOUT SEALANT
- FEWER, CONCEALED FASTENERS THAN SHINGLE OPTIONS
- NON-CORROSIVE / DURABLE
- LEACHING CONCERN FOR STORM-WATER RUNOFF (SALMON)

PREFERRED / RECOMMENDED