

Sustainable South Sound encourages the Olympia City Council to adopt a resolution for the City of Olympia, Washington, concerning the establishment, management and preservation of community gardens so that every resident of the City lives within a walkable distance (1/2 mile) of such a garden.

What is the Need:

- Total community gardens in City of Olympia: 5 (195 plots)
- Total community gardens managed by City of Olympia: 2 (135 plots, both on Westside)
 - No community gardens located within 1 mile of the downtown core and new households there.
 - Other notable areas of high population density not having walkable access: NE Olympia (Lilly Rd.), SW Olympia, east (18th Ave.) and SE.
- Total staff time allocated to management of Sunrise Park and Yauger Park community gardens by City of Olympia Parks, Arts and Recreation Department: 0.1 FTE
- Typical annual operating costs for one of the gardens Sustainable South Sound has had experience supporting: \$650 (costs covered by 17 members' annual \$40/plot fee)
 - Primary costs:
 - water for irrigation (~1/2 of total)
 - supplies (1/4 of total)

Main points of the City of Olympia community gardening resolution:

The City of Olympia...

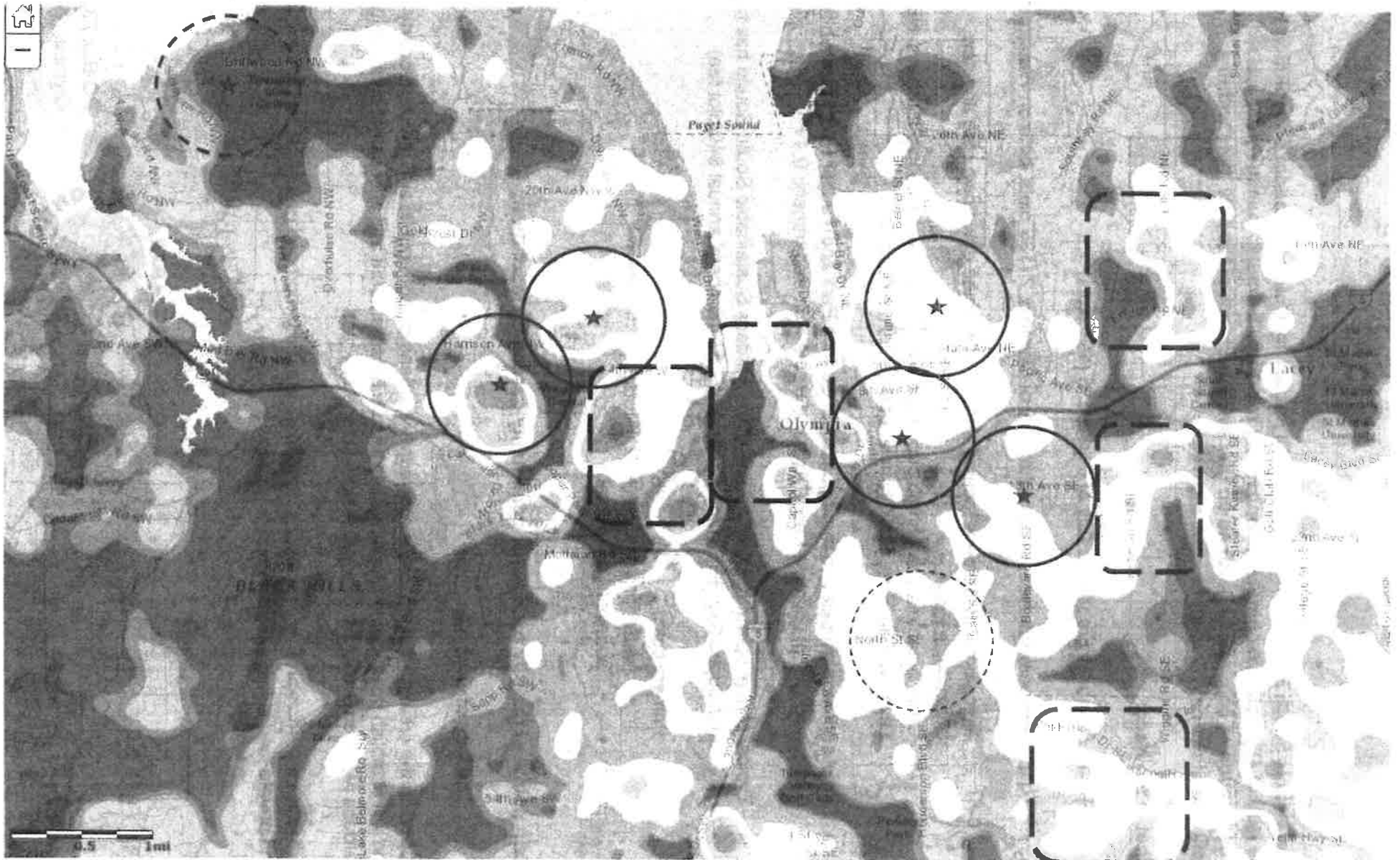
supports the creation of sustainable community gardens on both public and private property and will establish policies and procedures to ensure establishment and success of community gardens within one-half mile of every resident of the city; and

will work with [non-profit organizations, gardeners and neighborhood groups] to identify public and private land suitable for community gardens.



PO Box 7336
Olympia, WA 98507
(360) 464-5019

Community Gardens in Olympia – Residents within ½ mile, 2017



- ★ = current community garden
- [] = opportunity area for new community garden

Jannine - referral to Gen. Gov.

DRAFT

A RESOLUTION OF SUSTAINABLE SOUTH SOUND OF OLYMPIA, WASHINGTON, CONCERNING THE IMPLEMENTATION AND PRESERVATION OF COMMUNITY GARDENS WITHIN CITY LIMITS, SO THAT EVERY RESIDENT LIVES WITHIN WALKING DISTANCE (ONE-HALF MILE) OF A COMMUNITY GARDEN

WHEREAS, community gardens empower residents to become more active in their communities, cultivating volunteers and leaders who come together to create gardens for the benefit of present and future generations.

WHEREAS, community gardens beautify areas, reduce criminal activity, and prevent trash accumulation in the forms of dumping and littering; and

WHEREAS, community gardens provide access to healthy, seasonal food for people of all economic backgrounds, improving nutrition and food security among residents; and

WHEREAS, community gardens contribute to the preservation of, access to, and use of open space, vacant lots, and public parks; and

WHEREAS, the 2010 Parks, Arts and Recreation Plan put forward a goal of having all residences within walking distance (one-half mile) of a neighborhood park; and

WHEREAS, Sunrise Park and Yauger Community Garden are the two existing community gardens in City of Olympia parks; and

WHEREAS, on December 4, 2008 The Parks and Recreation Advisory Committee members included community gardens on their "top 10" list of new programs/facilities for the Parks, Arts and Recreation Plan.

NOW, THEREFORE, BE IT RESOLVED, that Sustainable South Sound calls upon the City of Olympia to

SECTION 1. support the creation of sustainable community gardens on both public and private property and will establish policies and procedures to ensure the success of community gardens on both public and private property within one-half mile of every resident of the city; and

SECTION 2. work with [non-profit organizations, gardeners and neighborhood groups] to identify public and private land suitable for community gardens.

~~refer to land use~~