



The Year Ahead

April 10, 2025

Olympia Utility Advisory Committee

LOTT Clean Water Alliance

Collaboration of four local governments

- **L**acey
- **O**lympia
- **T**umwater
- **T**hurston County

Board of Directors

- One elected official from each jurisdiction

Our Mission

Protect public health and the environment by cleaning water and restoring resources for our community



*Dani Madrone
City of Olympia*



*Tye Menser
Thurston County*

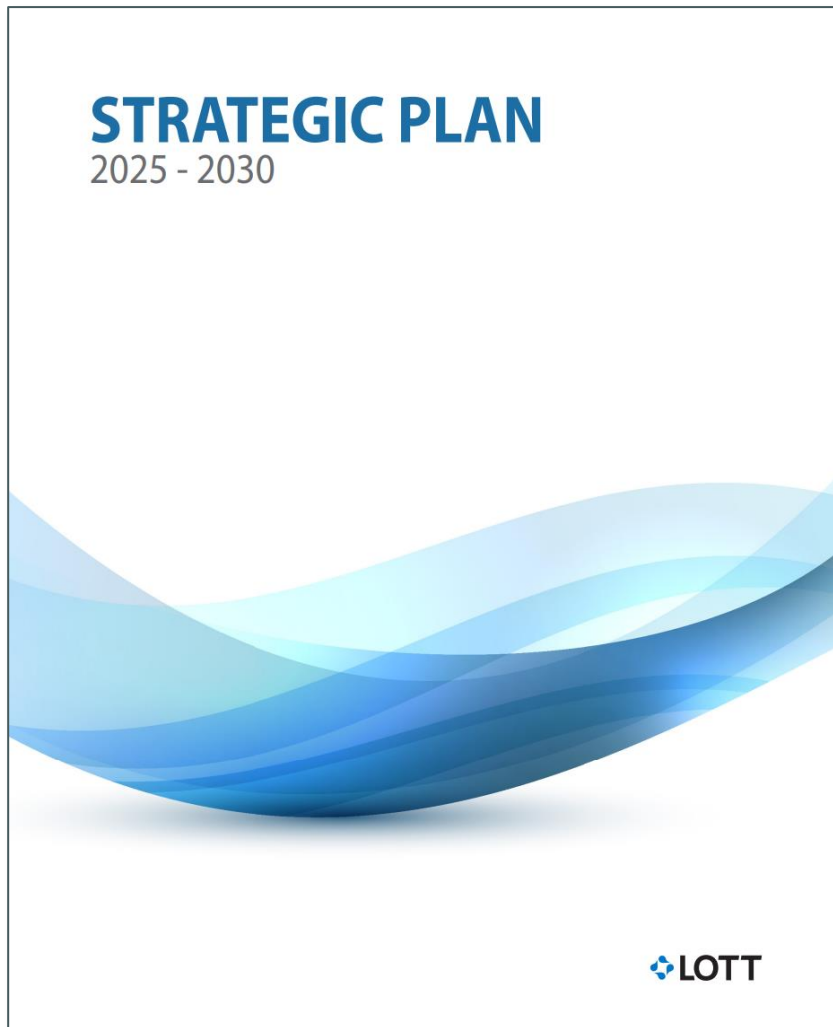


*Leatta Dahlhoff
City of Tumwater*



*Carolyn Cox
City of Lacey*

New Strategic Plan



Effective Utility Management Approach



Permit Renewals



Budd Inlet Treatment Plant



Martin Way Reclaimed Water Plant

New Biological Process



- April - October
- Incorporating lessons learned
- New ideas for adjustment



Recent Major Project Awards for our Upgrade



Gold Award



National Environmental Achievement Award



WA Project of the Year



National Excellence in Engineering Grand Award



Continuing our 2050 Plan



Actions

- Focus on existing facilities
- Continue nearby property acquisition efforts
- Sell some property at other sites

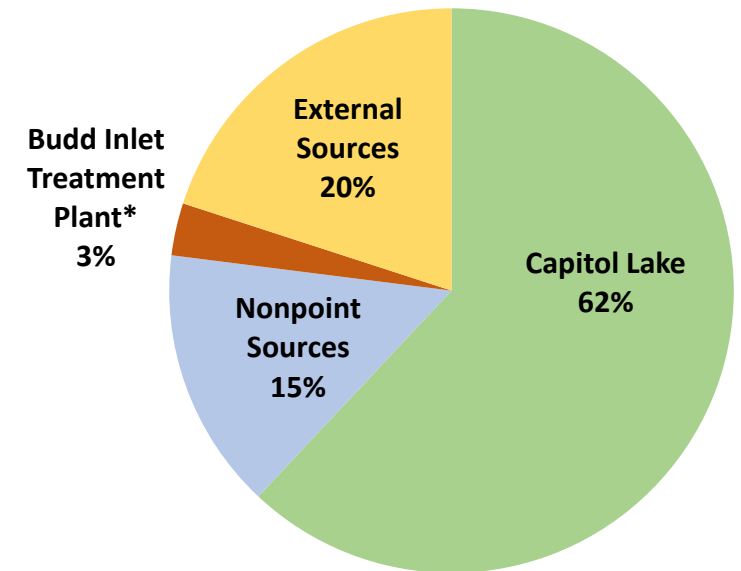
Property Sales



Continued Support of Water Quality Improvements

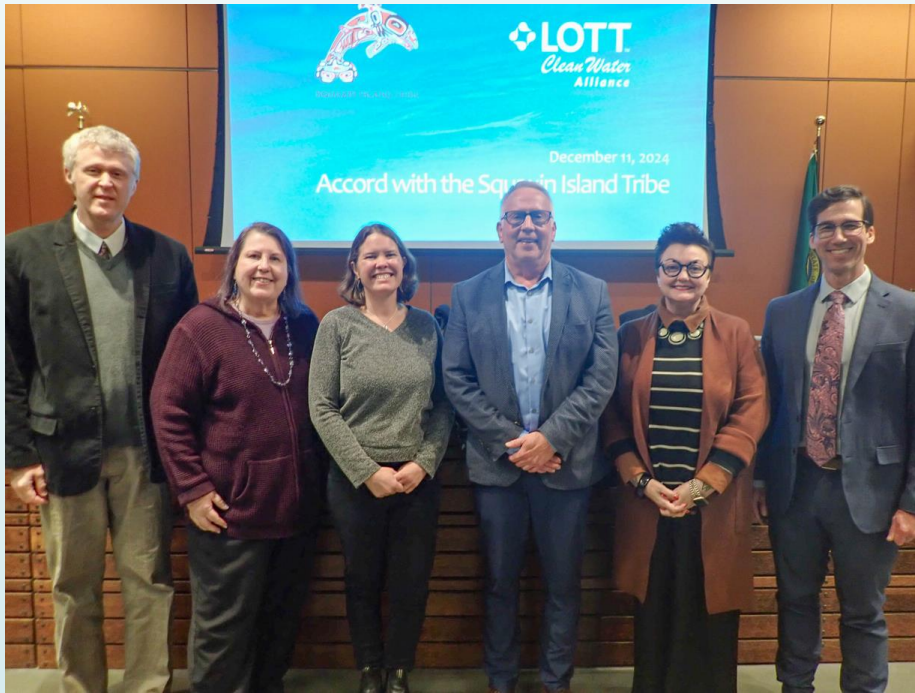
- High level of treatment at Budd Inlet Treatment Plant
- Puget Sound Nutrient General Permit
- Deschutes Estuary restoration
- Septic to sewer conversion rebates
- Reduce water quality impacts from unhoused population

Sources of Oxygen Depletion
in Budd Inlet



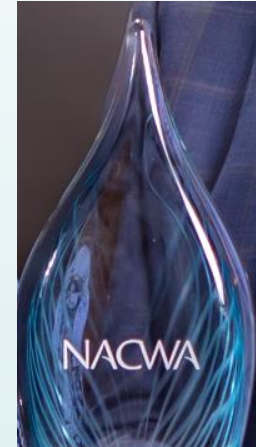
*"Local WWTPs" per Ecology

Squaxin Island Tribe Partnership



New Accord signed December 2024

Recent Award



**LOTT honored for
'watershed collaboration' in
receiving national award**

Environmental Achievement Award

(National Association of Clean Water Agencies)

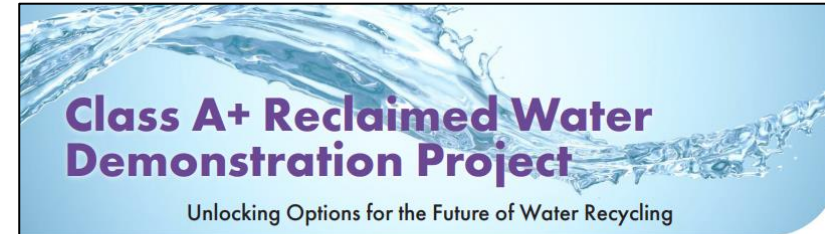
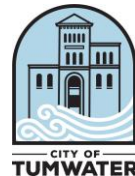
Future Technologies Pilot Team



- Nanobubbles
- Sludge pumping
- Tracking emerging technologies
- Visits and sharing with utility peers

Class A+ Reclaimed Water Demonstration Project

- First in Washington State
- Unique coalition
- Proving out different technologies



Class A+ Reclaimed Water Demonstration Project

Unlocking Options for the Future of Water Recycling

Project Vision

First-ever Class A+ demonstration project in the state

LOTT Clean Water Alliance is excited to demonstrate how we can safely clean and recycle used water to drinking water quality. This is referred to as Class A+ reclaimed water - the highest quality of recycled water as designated by the Washington State Departments of Ecology and Health.

This demonstration project will add treatment steps for advanced purification of water treated at the Budd Inlet Treatment Plant. We plan to use and compare two alternative multi-step treatment approaches to maximize learning opportunities for our staff, industry peers, state regulators, and the broader community. The finished water will be drinking water quality. At public outreach events, the community will have the opportunity to learn about Class A+ reclaimed water and to sample it as beer, root beer, or other consumable products.

Why is this project important now? LOTT is continuously innovating and exploring new treatment technologies to best meet our community's evolving needs. Demonstrating how to recycle water to drinking water quality is the next step in innovation.

Our partner jurisdictions of Lacey, Olympia, Tumwater, and Thurston County each manage drinking water utilities. While they have adequate water supplies now, they see a point in the future when that will likely change. Exploring the possibilities of Class A+ reclaimed water and fostering excitement now will encourage community conversations about long-term management options, well ahead of any future water crisis.



Project Goals

- 1 Demonstrate how to safely clean used water to drinking water quality
- 2 Test and compare two different multi-step treatment methods
- 3 Foster curiosity and excitement about what is possible when it comes to water recycling
- 4 Encourage community conversations about the future of our precious water resources

Collaborative Effort

Coalition of local, state, tribal, and community partners

LOTT is leading the demonstration project in collaboration with our four jurisdictional partners - the cities of Lacey, Olympia, and Tumwater, and Thurston County. The Washington State Departments of Health and Ecology are actively involved, as well as the State Board of Health.

Other community partners, such as the Squaxin Island Tribe, are participating. Additional partners are anticipated to join the effort as the project progresses.

We are working with the consulting firm Hazen and Sawyer on this project. They have experience supporting similar small-scale demonstration projects and large-scale potable water recycling projects for communities around the country. While this type of project is new to Washington State, we can build on what has been done elsewhere to ensure the safe and reliable production of high quality Class A+ reclaimed water.



Project Goal



**Demonstrate that
water should be
judged by its quality
and not its history.**

- Future outreach and events
- Many options for using the water



Continue Use of Reclaimed Water



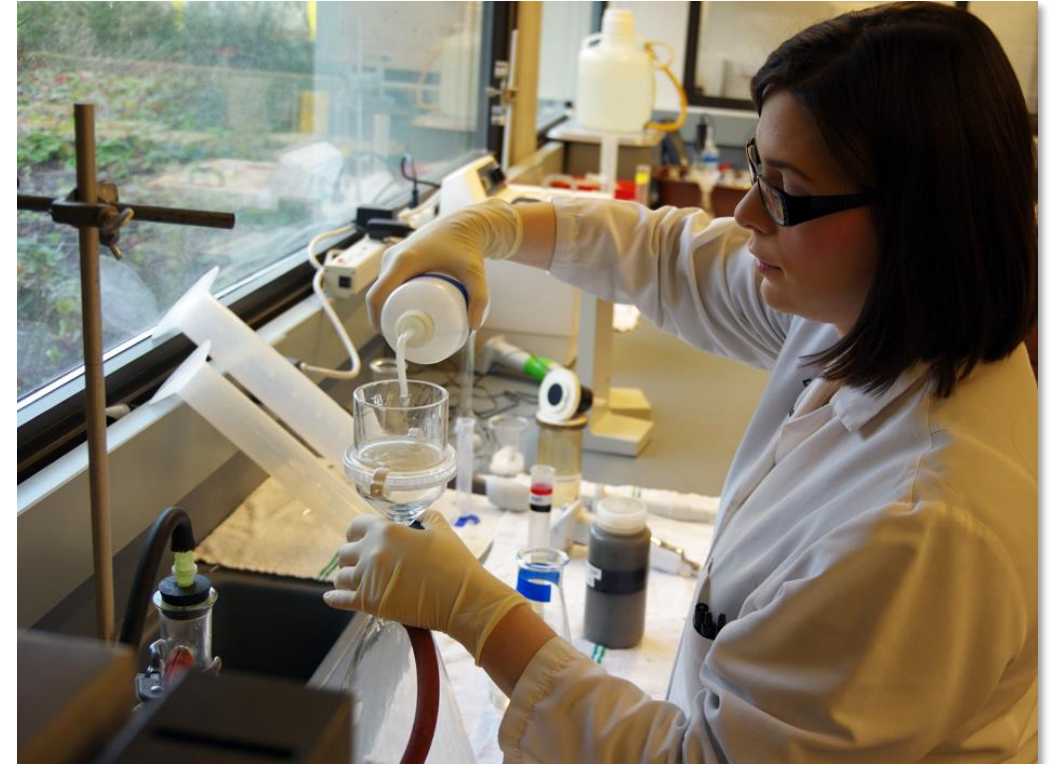
Energy Savings and Carbon Reduction

- Solar array now live
- Greenhouse gas emissions inventory
- Climate Actions Assessment report
- Internal Green Team efforts
- Energy savings through project decisions



Other Organizational Focus Areas

- Asset management upgrades
- Standard operating procedure updates
- Lab review
- Proactively addressing unregulated chemicals



Communications and Outreach

- Increase news release content and social media engagement
- Improve metrics and tracking
- Expand partnerships



LOTT honored for 'watershed collaboration' in receiving national award



Enhance Educational Programming

- Continue summer high school program
- Partner school field trips
- Community programming
- WET Science Center exhibits refresh
- Coordination with Hands On Children's Museum



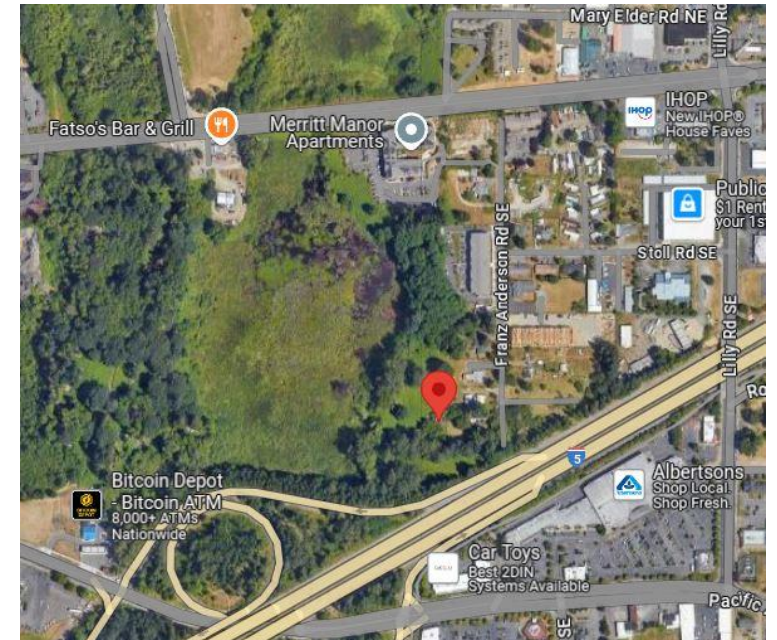
Strengthen Community Connections

- Wastewater epidemiology support
- Sea level rise collaborative
- Budd Inlet remediation
- Deschutes Estuary restoration
- Septic conversion programs
- Public Health Emergency Support program
- Community amenities
- Affordable Housing Support program



Franz Anderson Permanent Supportive Housing

- 70 multi-family units
- Meets permanent supportive housing criteria
- ~\$184,760 in connection fee rebates from LOTT



2025 Capital Projects



LOTT CLEAN WATER ALLIANCE



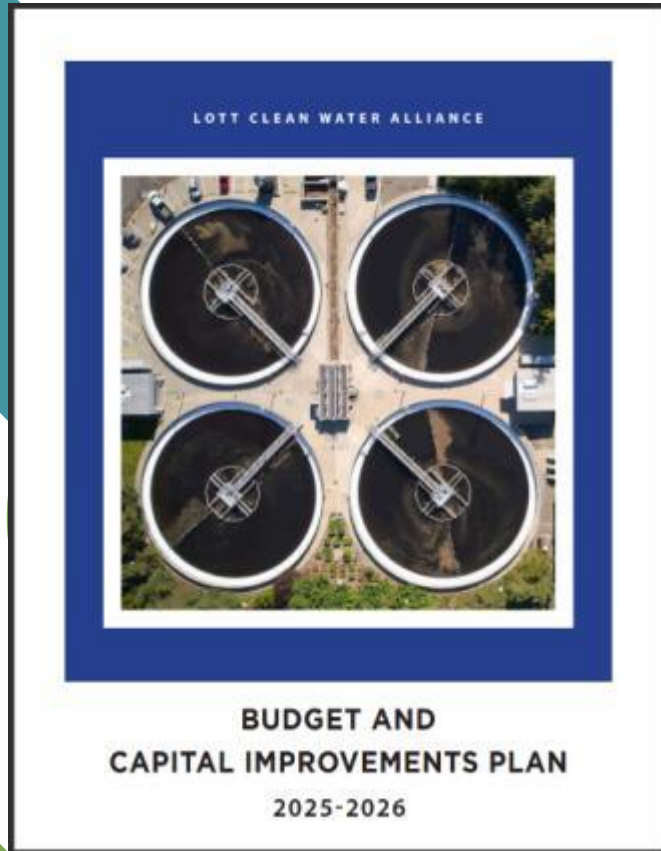
**BUDGET AND
CAPITAL IMPROVEMENTS PLAN**

2025-2026

2025 Construction Projects at Main Plant



2025 Planning and Design



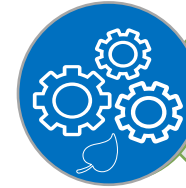
Martin Way Pump Station Improvements 1

Influent Pump Station and Backup Power 2

North Pipeline Expansion 3

Martin Way Pump Station Improvements

1



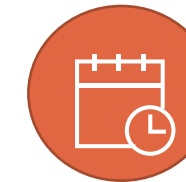
Beginning Detailed Design



Site upgrades, new pumps and wet well



\$27M construction



2026-2027

Influent Pump Station and Backup Power 2



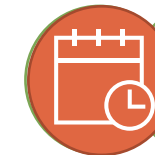
Update Basis of Design reports, identify procurement process, create detailed design schedule



Replacement pumps and generators



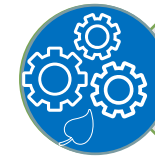
\$22M construction



2028-2029

North Pipeline Expansion

3



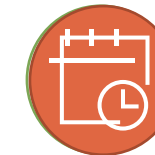
Complete groundwater management plan, complete detailed design



Install 48" pipe section through contaminated site



\$9M construction

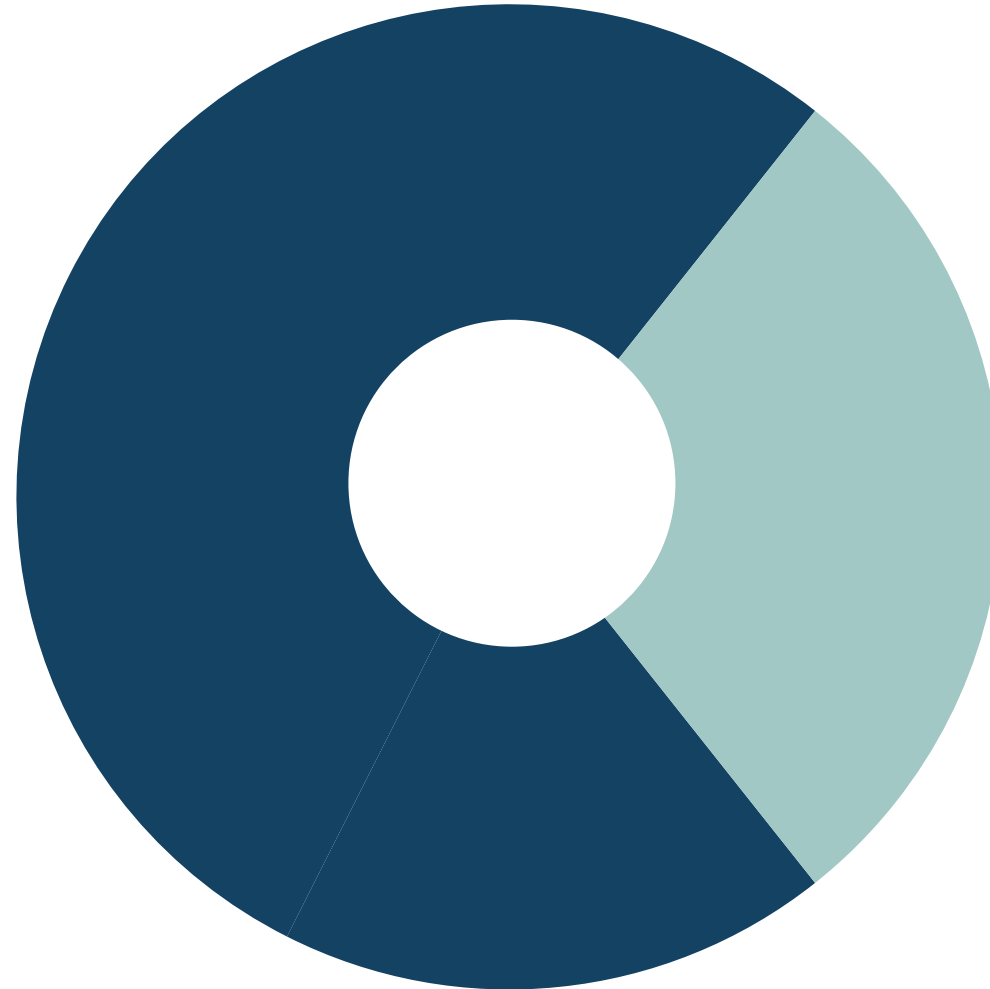


2026

2025-2026 Budget

Capital & Debt Service 71%

\$92.1 million

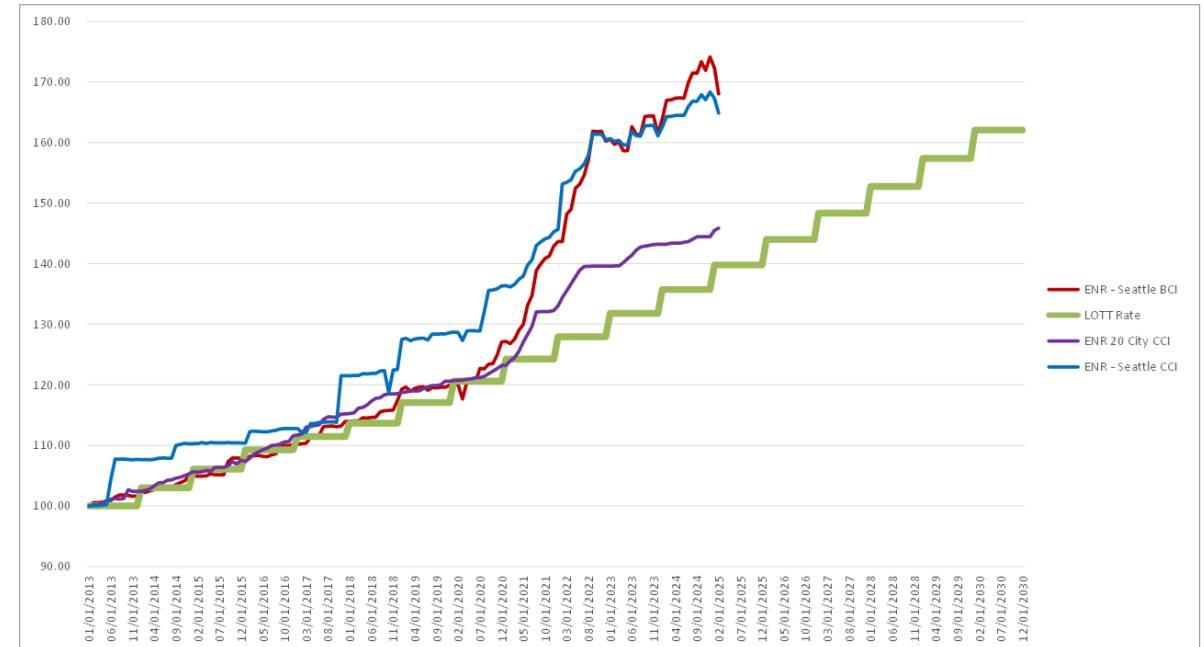


Operating 29%

\$38.4 million

Financials

- 2025-2030 Finance Plan accompanies Strategic Plan
- Tracking inflation and supply chain issues



Rates



Monthly Service Fees

Costs of operating and maintaining treatment plants, pump stations, pipelines, and related programs

- Wastewater Service Charge (WSC)
- \$47.52 per month

Connection Fees

Share of costs to serve more customers, including system pipelines, treatment facilities and related programs

- Capacity Development Charge (CDC)
- \$7,434.99 (one-time)

Wastewater Rate Comparisons				
	2024 Rate	2023 Rate	Percent Change	Flat or Volume
City of Shelton	\$135.89	\$130.02	4.5%	V
City of Seattle	\$128.10	\$123.41	3.8%	V
City of Tenino	\$125.66	\$125.66	0.0%	F
Thurston County*	\$120.31	\$119.71	0.5%	F
City of Bonney Lake	\$113.53	\$129.01	-12.0%	V
City of Bellevue	\$110.90	\$103.70	6.9%	V
City of Chehalis (in city limits)	\$98.50	\$98.50	0.0%	V
City of Centralia (in city limits)	\$91.85	\$89.08	3.1%	V
City of Yelm	\$89.27	\$89.27	0.0%	F
City of Renton	\$88.78	\$84.80	4.7%	F
City of Everett	\$87.53	\$87.53	0.0%	F
Average 2024 Rate: \$87.38				
City of Auburn	\$85.15	\$80.05	6.4%	F
City of Sumner	\$84.46	\$80.83	4.5%	V
City of Snoqualmie	\$83.76	\$82.16	1.9%	F
City of Puyallup	\$77.62	\$73.38	5.8%	V
City of Bremerton (in city limits)	\$77.57	\$74.96	3.5%	V
City of Lacey	\$76.39	\$72.43	5.5%	F
City of Longview (in city limits)	\$75.28	\$75.28	0.0%	V
City of Tacoma	\$74.85	\$69.64	7.5%	V
City of Olympia	\$72.95	\$70.59	3.3%	F
City of Aberdeen	\$72.00	\$66.00	9.1%	F
City of Kelso	\$70.42	\$68.37	3.0%	F
City of Tumwater	\$69.48	\$66.64	4.3%	F
City of Orting	\$69.41	\$64.87	7.0%	F
City of Mount Vernon	\$63.03	\$60.23	4.6%	V
Pierce County Sewer	\$61.57	\$59.06	4.2%	F
Lakehaven Sewer District	\$60.60	\$52.24	16.0%	V
City of Bellingham (in city limits)	\$56.43	\$53.54	5.4%	F
City of Edmonds	\$53.06	\$53.06	0.0%	F
City of Vancouver	\$48.44	\$45.71	6.0%	V



Below the average

Rate Comparison



* Thurston County utilities are combined into a single line in the table. Actual 2023 and 2024 amounts are: Tamoshan: \$147.36, \$152.10; Boston Harbor: \$119.10, \$117.67; Olympic View: \$114.14, \$114.14; Grand Mound: \$100.62, \$94.91.



Questions
