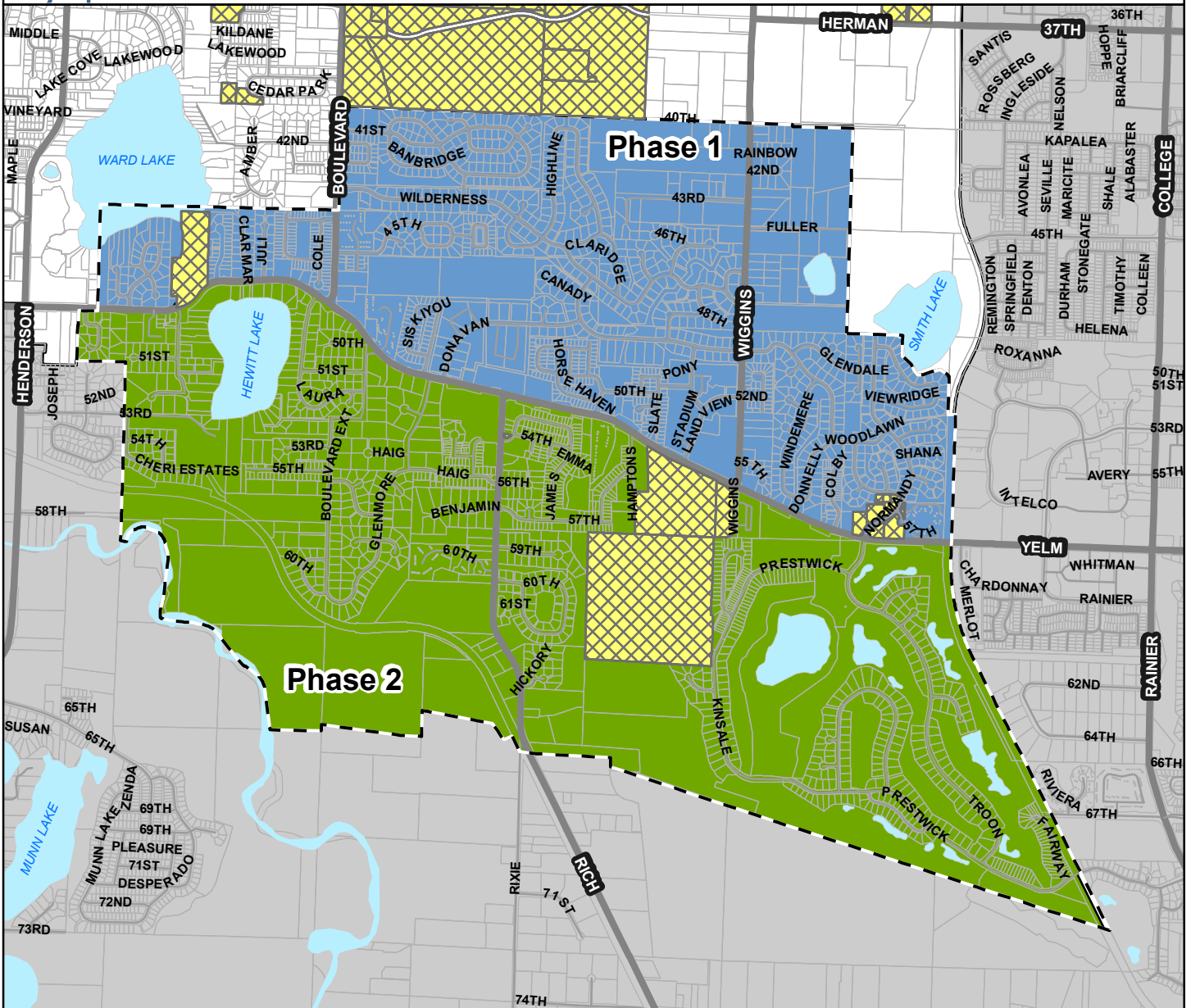




Annexation Study Area

Option 1

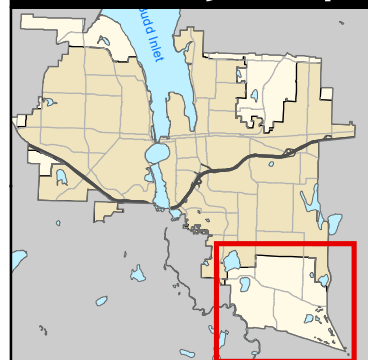


Possible Annexation Area

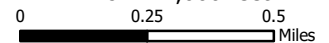
Phase 1	Percent of Assessed Value	- 63.63%
	Total Housing Units	- 1,579 Units
	Estimated Population	- 3,632 People
	Total Acres	- 678.57 Acres
Phase 2	Percent of Assessed Value	- 83.26%
	Total Housing Units	- 1,370 Units
	Estimated Population	- 3,151 People
	Total Acres	- 2,265 Acres

- City Limits
- Thurston County
- City Owned
- Parcel

Vicinity Map



1 inch = 2,000 feet



This map is intended for 8.5x11" portrait printing.

The City of Olympia and its personnel cannot assure the accuracy, completeness, reliability, or suitability of this information for any particular purpose. The parcels, right-of-ways, utilities and structures depicted herein are based on record information and aerial photos only. It is recommended the recipient and/or user field verify all information prior to use. The use of this data for purposes other than those for which they were created may yield inaccurate or misleading results. The recipient may not assert any proprietary rights to this information. The City of Olympia and its personnel neither accept or assume liability or responsibility, whatsoever, for any activity involving this information with respect to lost profits, lost savings or any other consequential damages.