

# City of Olympia Comprehensive Plan Future Land Use

- RESIDENTIAL 4 UNITS PER ACRE
- RESIDENTIAL 4-8 UNITS PER ACRE
- RESIDENTIAL 6-12 UNITS PER ACRE
- RESIDENTIAL LOW IMPACT
- RESIDENTIAL 1 UNIT PER 5 ACRES (COUNTY)
- RESIDENTIAL MULTIFAMILY 18 UNITS PER ACR
- RESIDENTIAL MULTIFAMILY 24 UNITS PER ACR
- MIXED RESIDENTIAL 7-13 UNITS PER ACRE
- MIXED RESIDENTIAL 10-18 UNITS PER ACRE
- RESIDENTIAL MIXED USE
- HIGH RISE MULTIFAMILY
- URBAN WATERFRONT-HOUSING
- URBAN RESIDENTIAL
- NEIGHBORHOOD VILLAGE
- URBAN VILLAGE
- MANUFACTURED HOUSING PARK
- NEIGHBORHOOD RETAIL
- NEIGHBORHOOD CENTER
- NEIGHBORHOOD CENTER
- COMMERCIAL ORIENTED SHOPPING CENTER
- AUTO SERVICES
- PROFESSIONAL OFFICE/MULTIFAMILY
- PLANNED UNIT DEVELOPMENT
- GENERAL COMMERCIAL
- DOWNTOWN BUSINESS
- CAPITOL CAMPUS/COMMERCIAL SERVICE HIGH
- URBAN WATERFRONT
- MEDICAL SERVICE/MULTIFAMILY
- LIGHT INDUSTRIAL
- INDUSTRIAL
- HIGH DENSITY CORRIDOR - 1
- HIGH DENSITY CORRIDOR - 2
- HIGH DENSITY CORRIDOR - 3
- HIGH DENSITY CORRIDOR - 4

- OLYMPIA CITY LIMITS
- URBAN GROWTH AREA BOUNDARY



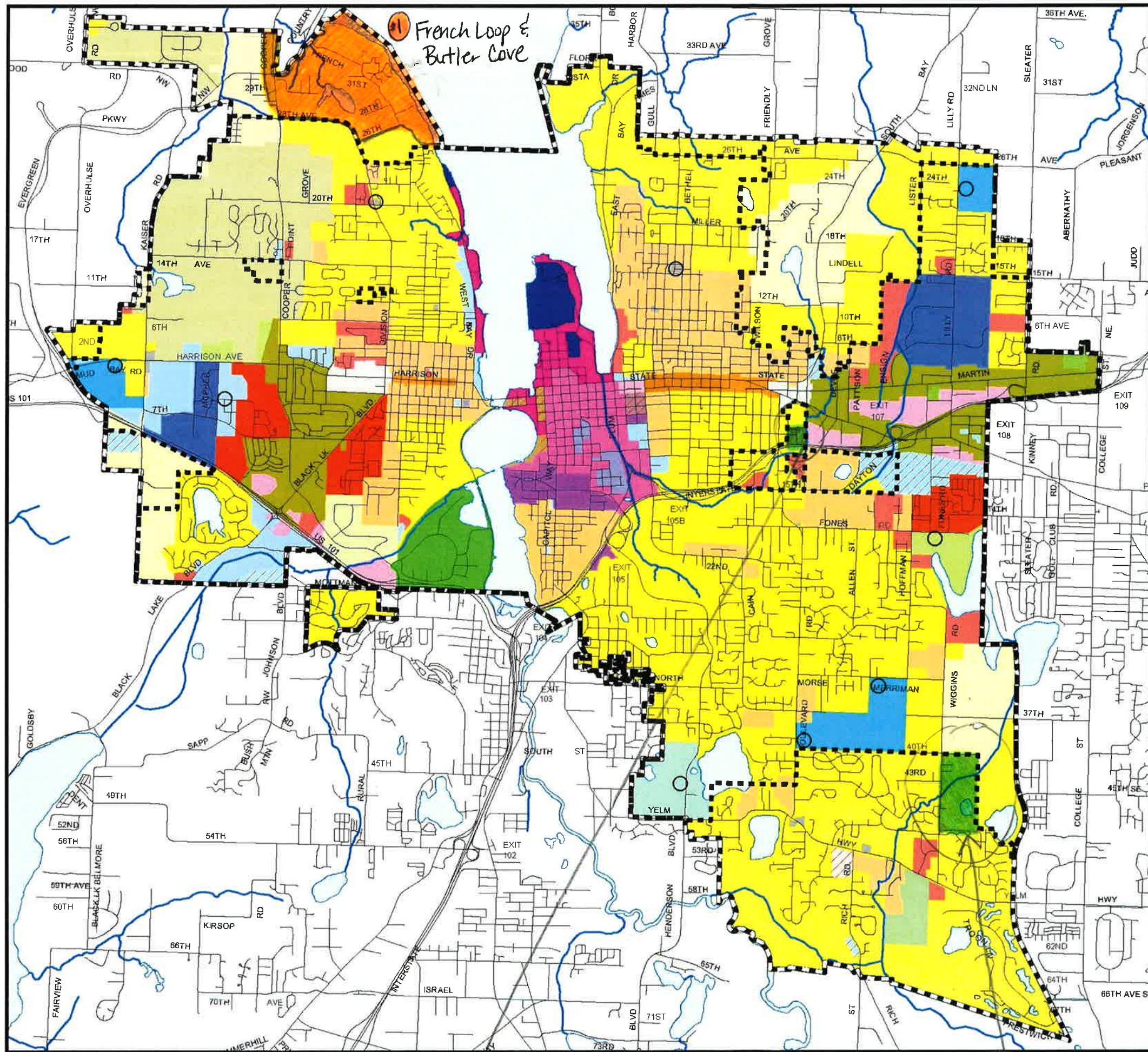
City of  
OLYMPIA

Publication Date: 12/19/08  
Effective Date: 01/01/09

MAP 1-3  
Ordinance #6595

Produced by: Olympia community Planning & Development  
Advance Planning & Historic Preservation

p:\olympia\complan\complan2008\maps\_images\future\_lu.mxd



1 French Loop & Butler Cove

3 Medela site specific amendment & rezone

2 S. Olympia/Chambers Study Area