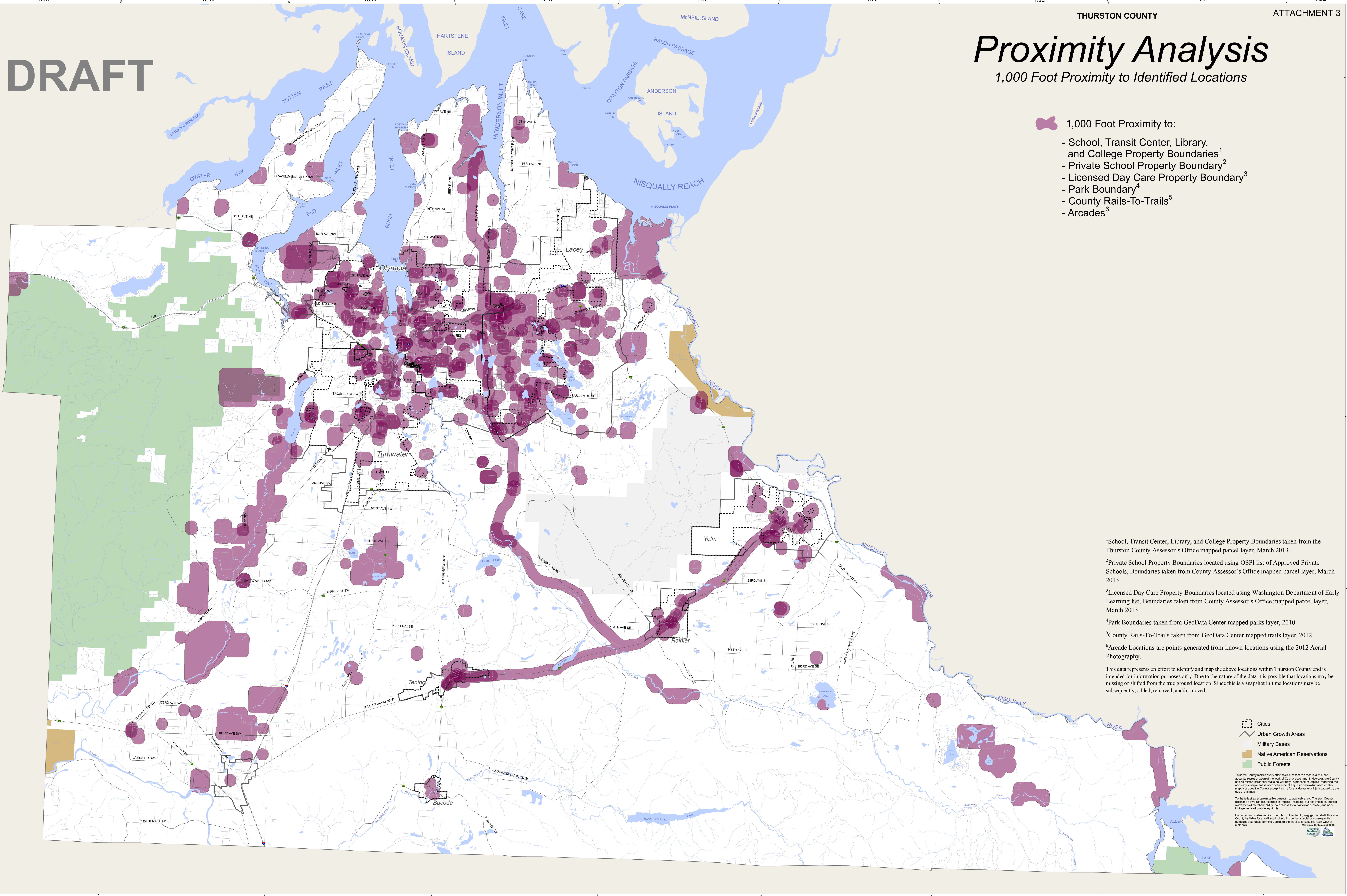


DRAFT

Proximity Analysis

1,000 Foot Proximity to Identified Locations

- 1,000 Foot Proximity to:
- School, Transit Center, Library, and College Property Boundaries¹
 - Private School Property Boundary²
 - Licensed Day Care Property Boundary³
 - Park Boundary⁴
 - County Rails-To-Trails⁵
 - Arcades⁶



¹School, Transit Center, Library, and College Property Boundaries taken from the Thurston County Assessor's Office mapped parcel layer, March 2013.

²Private School Property Boundaries located using OSPI list of Approved Private Schools, Boundaries taken from County Assessor's Office mapped parcel layer, March 2013.

³Licensed Day Care Property Boundaries located using Washington Department of Early Learning list, Boundaries taken from County Assessor's Office mapped parcel layer, March 2013.

⁴Park Boundaries taken from GeoData Center mapped parks layer, 2010.

⁵County Rails-To-Trails taken from GeoData Center mapped trails layer, 2012.

⁶Arcade Locations are points generated from known locations using the 2012 Aerial Photography.

This data represents an effort to identify and map the above locations within Thurston County and is intended for information purposes only. Due to the nature of the data it is possible that locations may be missing or shifted from the true ground location. Since this is a snapshot in time locations may be subsequently, added, removed, and/or moved.

- Cities
- ▭ Urban Growth Areas
- ▭ Military Bases
- ▭ Native American Reservations
- ▭ Public Forests

Thurston County makes every effort to ensure that this map is a true and accurate representation of the work of County government. However, the County and all related personnel make no warranty, expressed or implied, regarding the accuracy, completeness or convergence of any information disclosed on this map. The user assumes the County accepts liability for any damage or injury caused by the use of this map.

To the fullest extent permissible pursuant to applicable law, Thurston County disclaims all warranties, express or implied, including, but not limited to, implied warranties of merchantability, date fitness for a particular purpose, and non-infringement of proprietary rights.

Under no circumstances, including but not limited to, negligence, shall Thurston County be liable for any direct, indirect, incidental, special or consequential damages that result from the use of, or the inability to use, Thurston County materials.

Map Center Inc. 10/2013