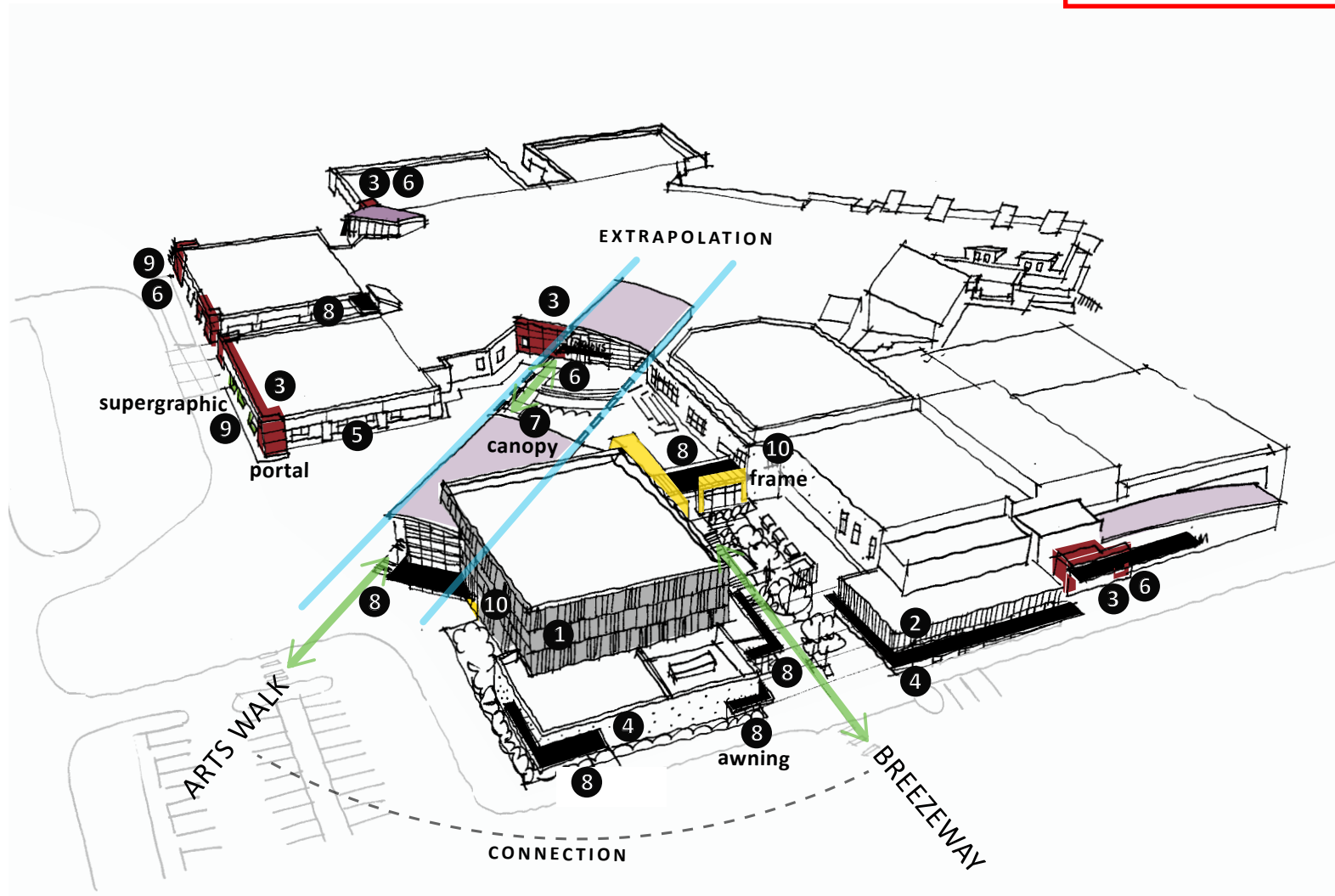


## PROJECT OVERVIEW

**CPD RECEIVED**  
08/16/2018 JLEE



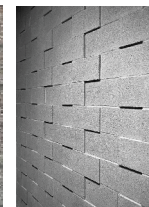
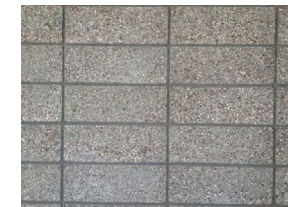
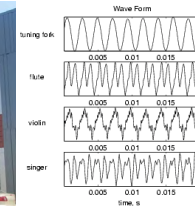
Materials are keyed to the Exterior Materials  
Palette on pages 11-12

# Capital High School Envelope Improvement & PAC Addition

## DESIGN APPROACH

# EXTERIOR MATERIAL PALETTE

		ELEMENT	ROLE	LOCATION
1	metal a	<b>corrugated metal wall panel</b> vertical, random pattern texture applied in horizontal bands AEP Prestige Panel	-special wall treatment - an artistic derivation of existing metal wall cladding -inspired by high frequencies light and textural, higher on wall	PAC fly loft and house
2	metal b	<b>corrugated metal wall panel</b> vertical square battens in natural aluminum, regular spacing pattern	cohesiveness - replicates existing metal wall cladding	areas TBD
3	portal	<b>flat metal wall panel</b> solid or composite product with large units in stacked pattern - simply detailed	-focal point and anchor to the collection of campus forms - announce entry as a bold color among neutrals -school pride of branded color -inspired by bass frequencies	entries: -bus loop -administration -commons -PAC -gymnasium
4	cmu	<b>concrete block veneer</b> natural color, ground face with light pattern or subtle random mix	-cohesiveness - replicates existing metal wall cladding -durability and low maintenance	-PAC back-of-house
5	stucco	<b>cementitious skim coat</b> light texture such as sand finish - hand troweled or sprayed fog coat applied over exiting marblecrete	-provide a neutral background to unify campus -soften abrasiveness of existing marblecrete -clean and refresh finishes	existing marblecrete surfaces

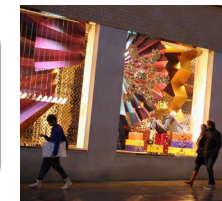
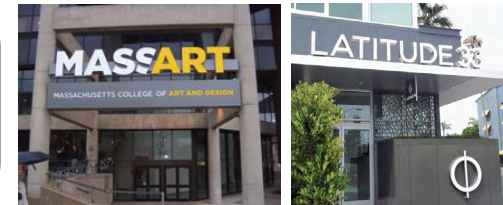


## Capital High School Envelope Improvement &amp; PAC Addition

DESIGN APPROACH

## EXTERIOR MATERIAL PALETTE

	ELEMENT	ROLE	LOCATION
6 signage	individual letters canopy-mounted	-visitor wayshowing -campus cohesiveness	major public entries: PAC administration commons gymnasium
7 canopy	column-supported canopy or deep roof overhang	-visitor wayfinding -exterior gathering zone -weather protection -shadow line for facade relief	major public entries: commons PAC gymnasium administration
8 awning	flat, painted steel cantilevered awning	-visual connection to CHS fitness addition -solar protection -shadow line for facade relief	secondary entrances  above select storefront  PAC scene shop
9 super graphic	over-scaled "CHS"  perforated metal with background image	-school pride /school brand -add color and curb appeal -create campus landmark	bus loop entry (CHS)  administration entry at northwest corner of pod b (capital high school/mascot)
10 frame	display windows niches easels	-facilitate program collaboration -learning on display -promote dramatic productions and musical performances -frame snapshots -create campus landmarks	PAC: upper lobby lower lobby breezeway connection  interior locations - TBD



## Capital High School Envelope Improvement & PAC Addition

PERFORMING ARTS CENTER

### VIEW FROM NORTH (CONGER AVE)



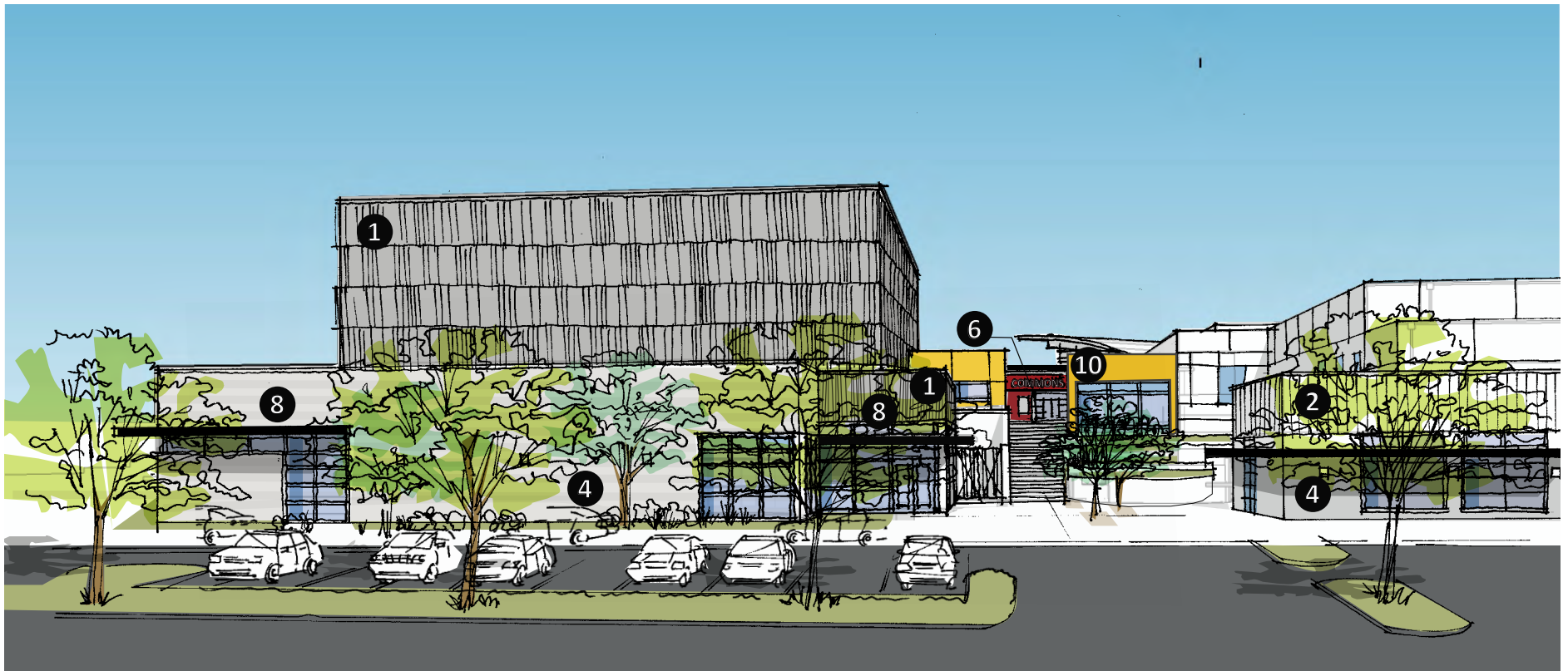
*Materials are keyed to the Exterior  
Materials Palette on pages 10-11*



## Capitol High School Envelope Improvement &amp; PAC Addition

PERFORMING ARTS CENTER

## VIEW OF BREEZEWAY FROM WEST (ATHLETIC FIELD)



Materials are keyed to the Exterior  
Materials Palette on pages 10-11

## Capital High School Envelope Improvement & PAC Addition

PERFORMING ARTS CENTER

### VIEW FROM EAST (COMMONS)



*Materials are keyed to the Exterior  
Materials Palette on pages 10-11*