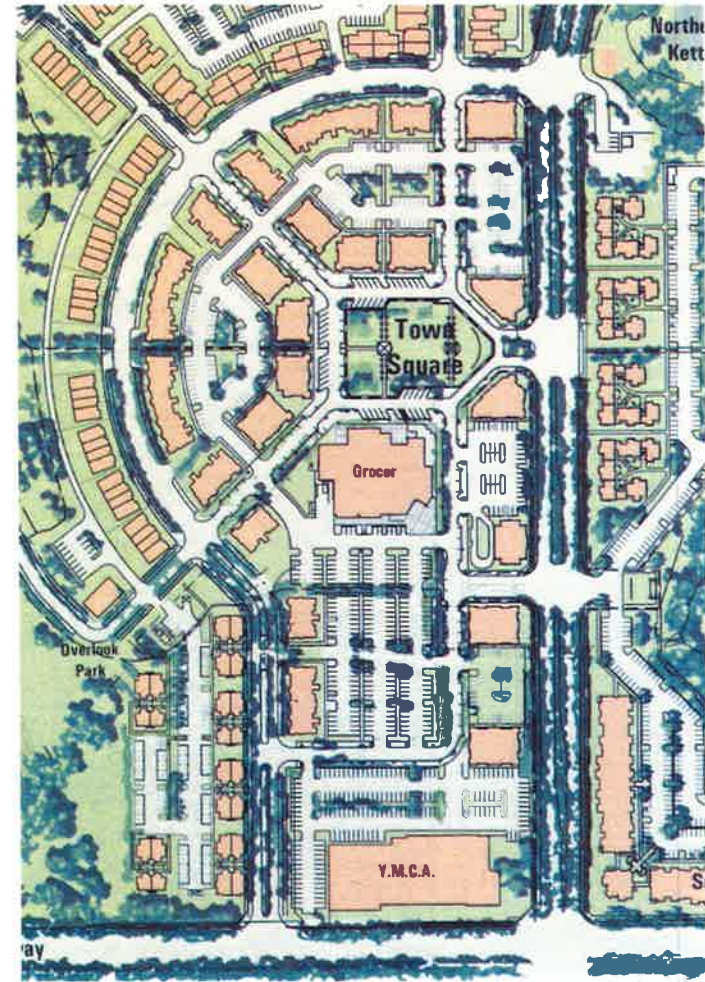
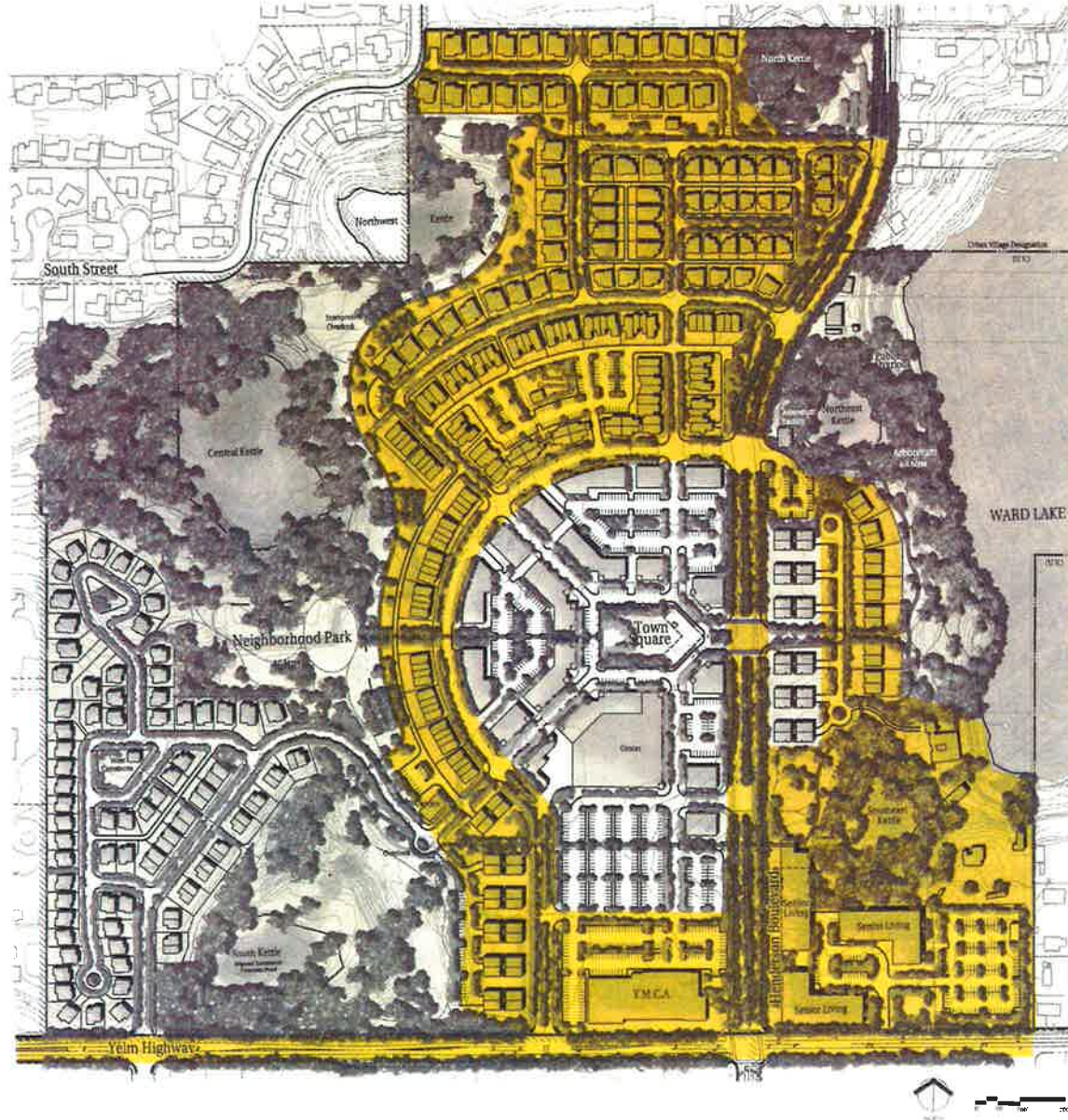


Original Site Plan



New Amended Site Plan

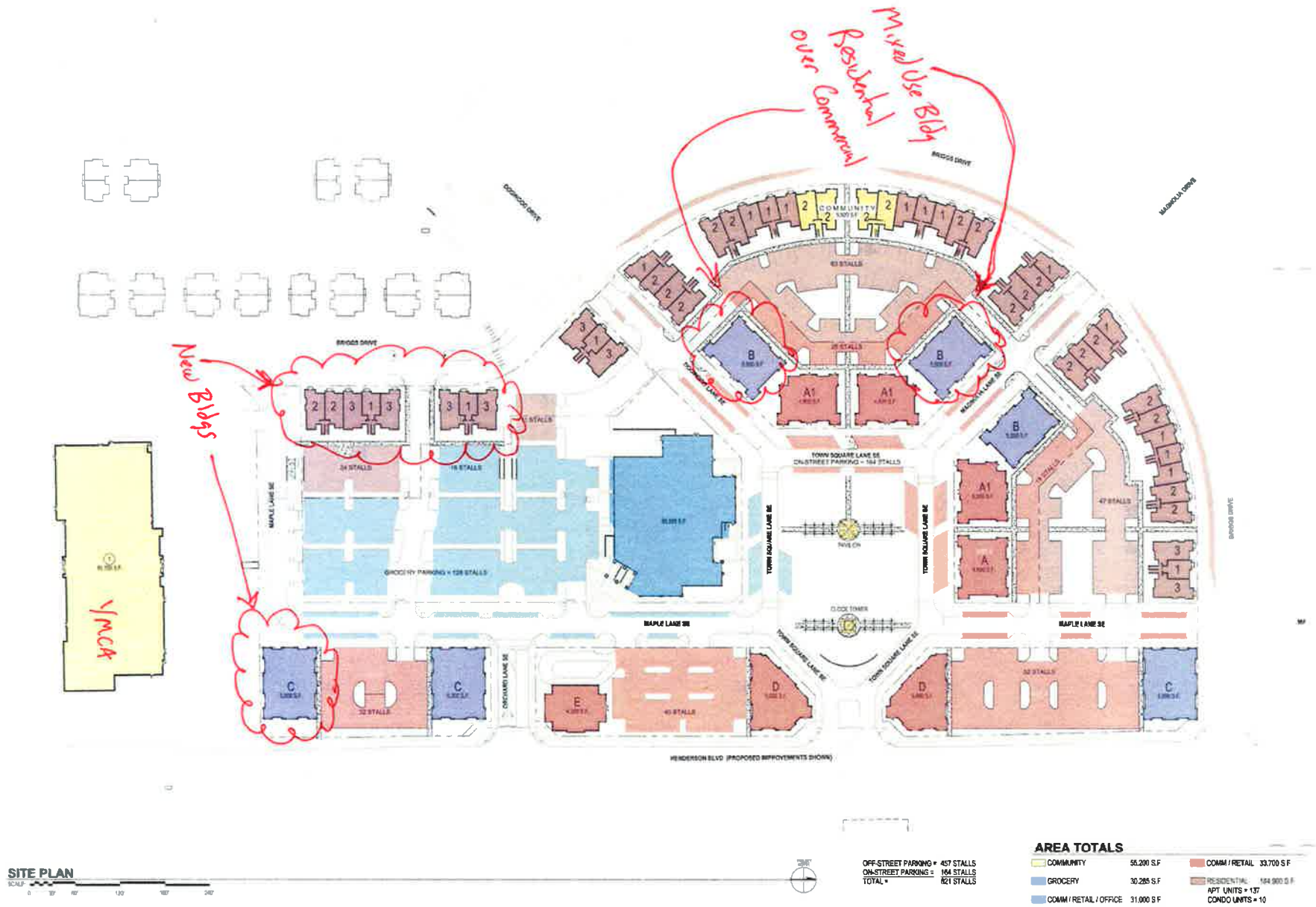
KEY  
NO CHANGE



Attachment # 1  
Pg 2

Original Site Plan – Area of No Change


Briggs Village Master Plan Amendment



Attachment #1  
 p93

**BRIGGS VILLAGE MIXED USE DISTRICT PLAN**






**AREA TOTALS**

 COMMUNITY	36,200 S.F.	 COMM / RETAIL	33,770 S.F.	OFF STREET PARKING = 457 STALLS
 GROCERY	30,285 S.F.	 RESIDENTIAL	184,900 S.F.	ON-STREET PARKING = 794 STALLS
 COMM / RETAIL / OFFICE	31,000 S.F.	 RESIDENTIAL	APT UNITS = 137	TOTAL = 621 STALLS
			CONDO UNITS = 10	



**FIRST FLOOR**

**FIRST FLOOR AREA TOTALS**

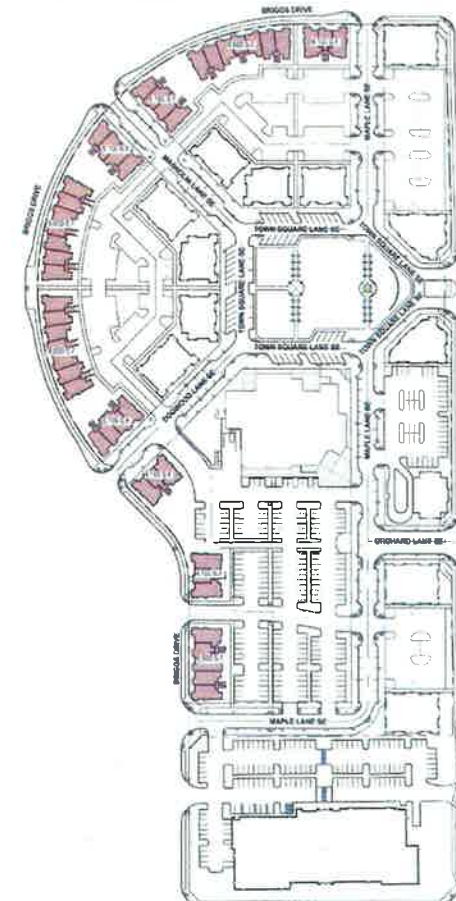
 COMMUNITY	52,200 S.F.	 COMM / RETAIL	33,700 S.F.
 GROCERY	28,410 S.F.	 RESIDENTIAL	54,100 S.F.
 COMM / RETAIL / OFFICE	31,000 S.F.		APT UNITS = 43



**SECOND FLOOR**

**SECOND FLOOR AREA TOTALS**

 COMMUNITY	3,000 S.F.	 COMM / RETAIL	0 S.F.
 GROCERY	1,875 S.F.	 RESIDENTIAL	70,800 S.F.
 COMM / RETAIL / OFFICE	0 S.F.		APT UNITS = 47
			CONDO UNITS = 10



**THIRD FLOOR**

**THIRD FLOOR AREA TOTALS**

 COMMUNITY	0 S.F.	 COMM / RETAIL	0 S.F.
 GROCERY	0 S.F.	 RESIDENTIAL	50,900 S.F.
 COMM / RETAIL / OFFICE	0 S.F.		APT UNITS = 47

ALTERNATE 10,000 SF IN LIEU OF (2) 5,000 SF BUILDINGS SHOWN

Attachment #1  
Pg 4



Aerial View from Northeast

Briggs Village Town Center

Attachment #1  
Page 5