

# 2020 NPDES Annual Report and Stormwater Management Program Plan

March 4, 2021





# Clean Water Act



## NPDES Permit Program



### Phase I Permits



### Phase II Permits

# A Citywide Responsibility

## Key Contributors

- Public Works
  - Water Resources
  - Transportation
  - General & Engineering Services
  - Fleet & Facilities
- CP&D
  - Planning
  - Permitting
  - Engineering/Building
- Parks
  - O&M
- Police and Fire Dept.



# Permit Requirements

1. Stormwater Planning
2. Public Education & Outreach
3. Public Involvement
4. Mapping
5. Illicit Discharge Detection & Elimination (IDDE)
6. Construction Site Runoff
7. Municipal Operations and Maintenance (O&M)
8. Source Control for Existing Development
9. Compliance with TMDL
10. Monitoring and Assessment
11. Reporting

# Stormwater Planning

- Coordination with Long-range Plans
- LID Preferred Approach to Site Development
- Stormwater Management Action Plan (SMAP)
  - Receiving Water Assessment
  - Receiving Water Prioritization
  - Identify Priority Catchment Basin

# Public Education and Outreach

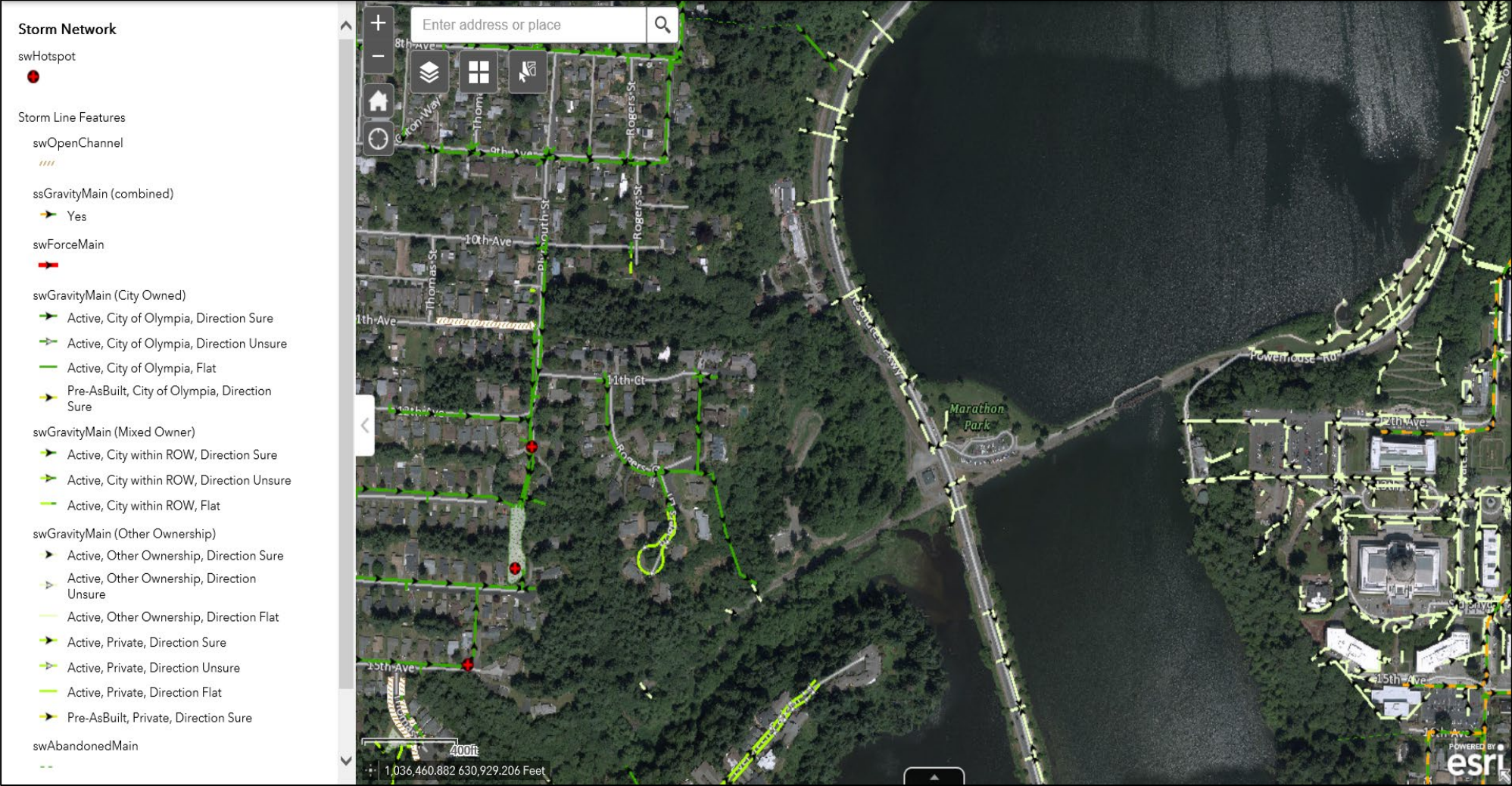
- General Awareness
- Behavior Change
- Stewardship



# Public Involvement

- Advisory Councils
- Public Meetings/Hearings
- Watershed Committees
- Participation in developing rate structures

# Mapping



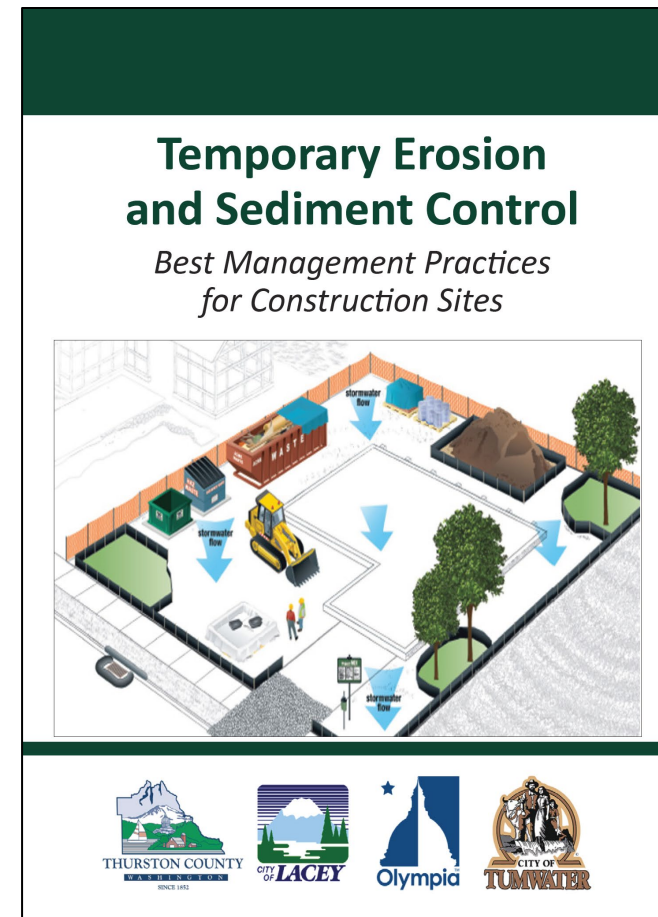


# Illicit Discharge Detection and Elimination (IDDE)

- Prevent, Detect, Trace and Eliminate Illicit Connections and Illicit Discharges
  - Spill Hotline: 753-8333 (PW Dispatch)
  - 51 spills eliminated during 2020
- Compliance and Enforcement
- Training Field Staff

# Construction Site Runoff

- Drainage Design and Erosion Control Manual for Olympia
- CP&D and PW Coordination
  - Development Plan Review
  - Inspections
  - Compliance & Enforcement
- Training (Erosion Control, LID, SW Design)



# Operations and Maintenance (O&M) Pollution Prevention

- Stormwater System Inspections
  - Spot Checks – “hot spot” list
  - Catch Basins
  - Treatment and Flow Control Facilities
- Stormwater Pollution Prevention Plan (SWPPPs)
  - Public Works Maintenance Center
  - Priest Point Park Maintenance Facility
- Training (Spill Response, Erosion Control, BMPs)



# Source Control

- Ordinance
  - Source Control BMPS
  - Structural BMPs
- Site Inventory
- Site Inspections
- Enforcement
- Training



# TMDL and Monitoring

- Henderson
  - Updated Coordinated Monitoring Plan
- Deschutes
  - EPA accepted public comments August 7 – October 7
  - Track Temperature Reduction Measures



UNITED STATES ENVIRONMENTAL PROTECTION AGENCY  
REGION 10  
1200 Sixth Avenue, Suite 155  
Seattle, WA 98101-3188

WATER  
DIVISION

## Total Maximum Daily Loads (TMDLs) for the Deschutes River and its Tributaries

Sediment, Bacteria, Dissolved Oxygen, pH, and Temperature

July 31, 2020 TMDLs for Public Comment

In compliance with the provisions of the Clean Water Act, 33 U.S.C. 1251 et seq., as amended by the Water Quality Act of 1987, P.L. 1004, the Environmental Protection Agency is today establishing a TMDL to address sediment, bacteria, dissolved oxygen, pH, and temperature loading in the mainstem of the Deschutes River as well as its tributaries.

The Regional Administrator is concurrently seeking public comment on these TMDLs. Consistent with EPA's regulations in 40 C.F.R. 130.7(d)(2), EPA will issue a public notice seeking comment on these TMDLs established by EPA. EPA will begin a 60-day public process on August 7, 2020. Comments should be provided to [magdangal.miranda@epa.gov](mailto:magdangal.miranda@epa.gov) by 5:00 pm Pacific time on October 7, 2020.

After considering public comment and making any revisions deemed appropriate, the Regional Administrator intends to transmit these TMDLs to the State of Washington for incorporation into their current water quality management plan.

/s/ 7/31/2020

Daniel Opalski, Director

# Monitoring and Assessment

- Stormwater Action Monitoring
  - Status and trends receiving waters
  - Effectiveness and source identification studies
- Interlocal Agreement with Thurston County
  - Black Lake Ditch
  - Chambers Creek
  - Indian Creek
  - Moxlie Creek
  - Percival Creek



Thank you!

Questions?

