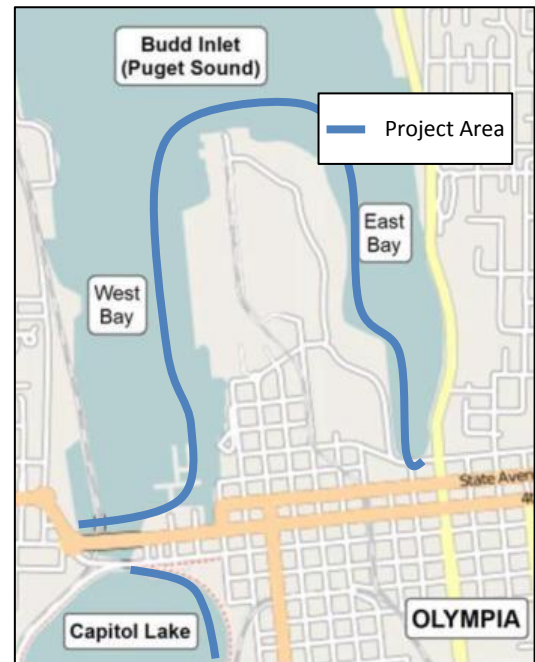


Sea Level Rise Response Planning

Why is a Sea Level Rise Response Plan needed?

There are many sea level rise (SLR) and flooding related challenges facing the downtown Olympia area. Portions of the downtown are built on fill, shoreline areas are mapped within FEMA’s 100-year coastal floodplain, and high tides can back up into the stormwater system and cause surface street flooding. Downtown flooding issues – both from high tides and intense precipitation – will worsen in the future as a result of SLR. The City of Olympia is working with the LOTT Clean Water Alliance and the Port of Olympia to develop a comprehensive SLR Response Plan to address these challenges and protect and preserve downtown amenities, assets, and quality of life for Olympia’s residents and businesses. The SLR Response Plan will analyze options for protecting the downtown area and develop recommendations, implementation schedules, decision-making thresholds, funding needs, and emergency response approaches to address SLR vulnerabilities and risks in the future.



How will the plan be developed?

The City has hired a consultant, AECOM, to assist with the development of the SLR Response Plan. AECOM has collaborated with the project partners (the City, LOTT Clean Water Alliance, and Port) to develop a project approach and schedule to carry out the work necessary to develop the plan. The project team will follow an innovative approach and the project tasks will include: data review of prior studies; summary of best available SLR science; defining a SLR planning framework; refining prior vulnerability and risk assessments of the downtown area, including LOTT and Port facilities; identifying options for addressing SLR; developing a response plan that includes actionable next steps, priorities, and phasing; and providing opportunities for community input. The project partners have allocated \$250,000 to support this effort which begins in May and continues through 2018.

SLR Response Plan Schedule

SLR Response Plan Schedule	2017								2018											
	M	J	J	A	S	O	N	D	J	F	M	A	M	J	J	A	S	O	N	D
Project Management/Coordination																				
Project Initiation and Kick-off																				
Data and Climate Science Review																				
SLR Planning Framework																				
Vulnerability and Risk Assessment																				
Develop Adaptation Strategies																				
Develop SLR Response Plan																				Adopt Plan
Community Workshops																				

How will the community participate in the process?

The City maintains a webpage and interactive sea level rise communication tool that can be accessed at www.olympiawa.gov/sealevelrise. Information about this planning effort will be available there. The City is also developing a stakeholder engagement plan and will host a series of community workshops to allow residents an opportunity to better understand the process and provide input on the proposed strategies and plan.

For more information, contact Susan Clark, Senior Planner, at 360.753.8321 or email searise@ci.olympia.wa.us

